

PER ROAD DIST. NO.	STATE	E.R. PROJ. NO.	SHEET NO.	TOTAL SHEETS
9	VT.	1	1	96

INDEX OF SHEETS

SHEET NO.	TITLE PAGE
2-3	TYPICAL CROSS-SECTION OF IMPROVEMENT CHADUNG, BASE, DRAINAGE & GUARD RAIL WITH DOUBLE TACK COAT OF REFINED TAR - ITEM 29
4	BANKING AND WIDENING TABLES
5-16	PLAN AND PROFILE STA.
17	DETAILS OF 2x3 CONC. BOX STA. 303+85
18	DETAILS OF 2x2 CONC. BOX STA. 317+50
19	PIPE CULVERTS-----5-28
20	BOX CULVERTS-----5-29
21	GUARD RAIL-----5-30
22	BOUNDARY MARKERS-----5-31
23	STANDARD BOXES-----5C-1
24	BARRICADES & LIGHTS-----5-40
25-30	CROSS-SECTIONS

STANDARD STRUCTURE SHEETS APPROVED BY THE CHIEF ENGINEER

SHEETS 5 28 & 5 29	JULY 11, 1933
SHEET 5 30	AUG 15, 1933
SHEET 5 31	JULY 25, 1934

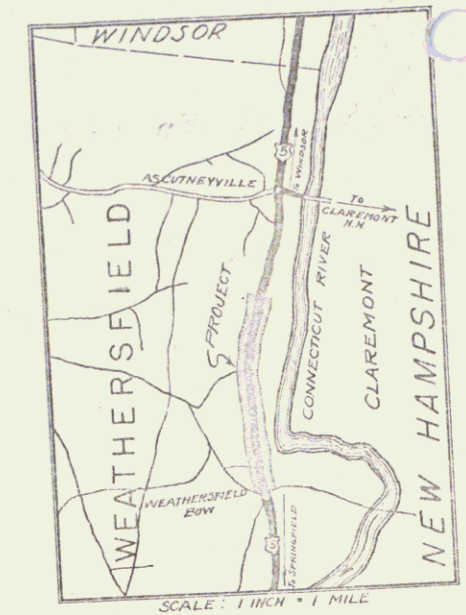
STATE OF VERMONT  
STATE HIGHWAY DEPARTMENT  
**PLAN AND PROFILE OF PROPOSED STATE HIGHWAY**  
EMERGENCY RELIEF PROJECT

**TOWN OF WEATHERSFIELD**

WINDSOR-SPRINGFIELD ROAD

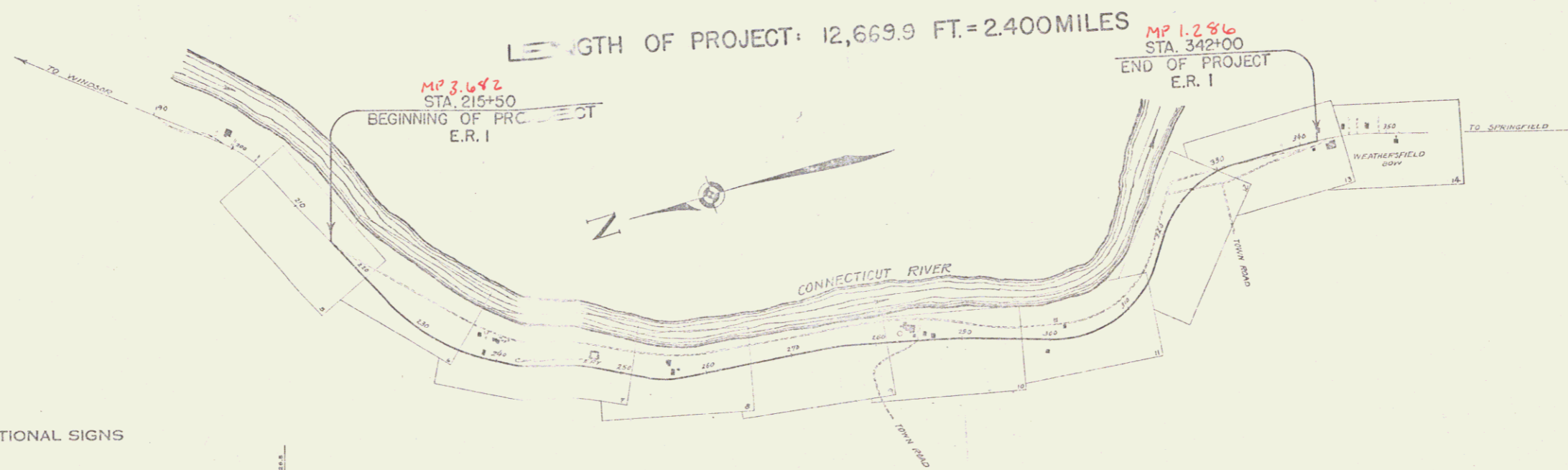
BEGINNING AT A POINT 3.1 MILES SOUTH OF THE WINDSOR-WEATHERSFIELD TOWN LINE AND EXTENDING SOUTHERLY 2.400 MILES.

Route - US5  
Project: ERI  
Pin# 992335



To Be Returned To R.O.W. Division  
Town of USS  
PERMITAL  
DOWN FILE  
RIGHT-OF-WAY DIVISION

LENGTH OF PROJECT: 12,669.9 FT. = 2.400 MILES



APPROVED: Nov 14, 1936  
COMMISSIONER OF HIGHWAYS  
SUBMITTED BY ORDER OF THE STATE HIGHWAY DEPARTMENT

CONVENTIONAL SIGNS

COUNTY LINE	GROUND ELEVATION
TOWN LINE	GRADE ELEVATION
FENCE LINE	
STONE WALL	
UNFENCED PROPERTY	
GUARD RAIL	
TRAVELED WAY	
RAILROAD	
RETAINING WALL	
CENTER LINE	
SURVEY LINE	
CULVERT	
DROP INLET	
TROLLEY POLE	
POWER POLE	
TELEPHONE POLE	
TRAILER	
HEUGE	

SCALES

TITLE	1" = 800'
TYPICAL	1" = 2'
PLAN	1" = 50'
PROFILE	HOR. 1" = 50'
	VER. 1" = 10'
CROSS-SECTIONS	1" = 5'

These plans are subject to such revisions as may be required by the Bureau of Public Roads or the Commissioner of Highways. Construction is to be carried out in accordance with the plans and Standard Road and Bridge Specifications of 1935 including all subsequent approved revisions and such revised specifications and special provisions as may be submitted with the plans. Attention of the contractor is called to the fact that the State Highway Board reserves the right to extend this project at the same contract prices. Said cost of extension not to exceed 25% of the amount of the contract.

RECOMMENDED FOR APPROVAL

RECOMMENDED FOR APPROVAL

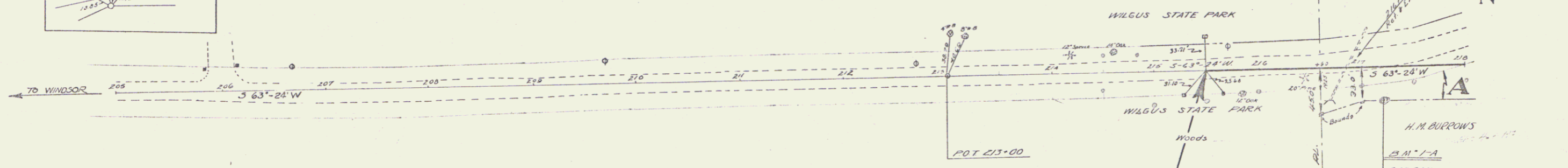
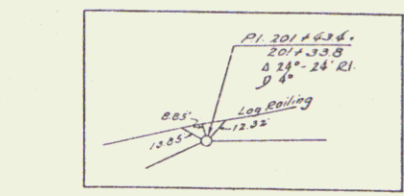
APPROVED

FILED

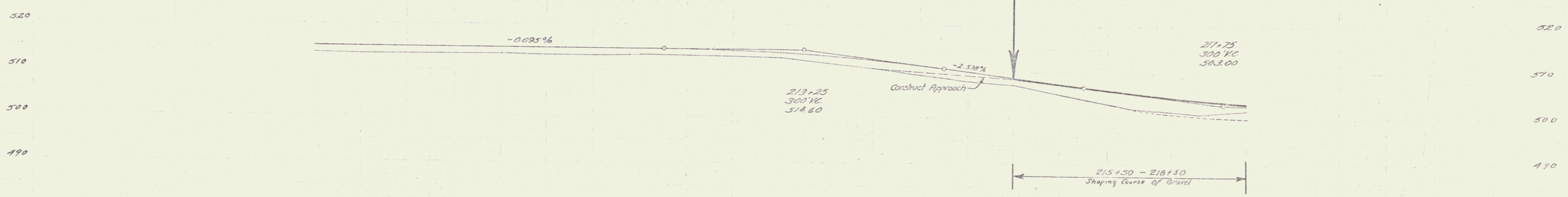
SHEET 1 OF 50

DIST # 2 Plans





PARCEL	KIND OF INSTRUMENT	DATE OF INSTRUMENT	GRANTOR	GRANTEE	RECORDED	REMARKS
A	M.D.	11-9-36	HENRY H. LUNKE, BURROWS	HEATHLET FIELD	BOOK 2908 PAGE 247E	11-7-30



Station	Elevation	Station	Elevation	Station	Elevation	Station	Elevation
205	503.70	208	503.70	211	503.70	214	503.70
206	503.70	209	503.70	212	503.70	215	503.70
207	503.70	210	503.70	213	503.70	216	503.70
208	503.70	211	503.70	214	503.70	217	503.70
209	503.70	212	503.70	215	503.70	218	503.70
210	503.70	213	503.70	216	503.70	219	503.70
211	503.70	214	503.70	217	503.70	220	503.70
212	503.70	215	503.70	218	503.70	221	503.70
213	503.70	216	503.70	219	503.70	222	503.70
214	503.70	217	503.70	220	503.70	223	503.70
215	503.70	218	503.70	221	503.70	224	503.70
216	503.70	219	503.70	222	503.70	225	503.70
217	503.70	220	503.70	223	503.70	226	503.70
218	503.70	221	503.70	224	503.70	227	503.70
219	503.70	222	503.70	225	503.70	228	503.70
220	503.70	223	503.70	226	503.70	229	503.70
221	503.70	224	503.70	227	503.70	230	503.70
222	503.70	225	503.70	228	503.70	231	503.70
223	503.70	226	503.70	229	503.70	232	503.70
224	503.70	227	503.70	230	503.70	233	503.70
225	503.70	228	503.70	231	503.70	234	503.70
226	503.70	229	503.70	232	503.70	235	503.70
227	503.70	230	503.70	233	503.70	236	503.70
228	503.70	231	503.70	234	503.70	237	503.70
229	503.70	232	503.70	235	503.70	238	503.70
230	503.70	233	503.70	236	503.70	239	503.70
231	503.70	234	503.70	237	503.70	240	503.70
232	503.70	235	503.70	238	503.70	241	503.70
233	503.70	236	503.70	239	503.70	242	503.70
234	503.70	237	503.70	240	503.70	243	503.70
235	503.70	238	503.70	241	503.70	244	503.70
236	503.70	239	503.70	242	503.70	245	503.70
237	503.70	240	503.70	243	503.70	246	503.70
238	503.70	241	503.70	244	503.70	247	503.70
239	503.70	242	503.70	245	503.70	248	503.70
240	503.70	243	503.70	246	503.70	249	503.70
241	503.70	244	503.70	247	503.70	250	503.70
242	503.70	245	503.70	248	503.70	251	503.70
243	503.70	246	503.70	249	503.70	252	503.70
244	503.70	247	503.70	250	503.70	253	503.70
245	503.70	248	503.70	251	503.70	254	503.70
246	503.70	249	503.70	252	503.70	255	503.70
247	503.70	250	503.70	253	503.70	256	503.70
248	503.70	251	503.70	254	503.70	257	503.70
249	503.70	252	503.70	255	503.70	258	503.70
250	503.70	253	503.70	256	503.70	259	503.70
251	503.70	254	503.70	257	503.70	260	503.70
252	503.70	255	503.70	258	503.70	261	503.70
253	503.70	256	503.70	259	503.70	262	503.70
254	503.70	257	503.70	260	503.70	263	503.70
255	503.70	258	503.70	261	503.70	264	503.70
256	503.70	259	503.70	262	503.70	265	503.70
257	503.70	260	503.70	263	503.70	266	503.70
258	503.70	261	503.70	264	503.70	267	503.70
259	503.70	262	503.70	265	503.70	268	503.70
260	503.70	263	503.70	266	503.70	269	503.70
261	503.70	264	503.70	267	503.70	270	503.70
262	503.70	265	503.70	268	503.70	271	503.70
263	503.70	266	503.70	269	503.70	272	503.70
264	503.70	267	503.70	270	503.70	273	503.70
265	503.70	268	503.70	271	503.70	274	503.70
266	503.70	269	503.70	272	503.70	275	503.70
267	503.70	270	503.70	273	503.70	276	503.70
268	503.70	271	503.70	274	503.70	277	503.70
269	503.70	272	503.70	275	503.70	278	503.70
270	503.70	273	503.70	276	503.70	279	503.70
271	503.70	274	503.70	277	503.70	280	503.70
272	503.70	275	503.70	278	503.70	281	503.70
273	503.70	276	503.70	279	503.70	282	503.70
274	503.70	277	503.70	280	503.70	283	503.70
275	503.70	278	503.70	281	503.70	284	503.70
276	503.70	279	503.70	282	503.70	285	503.70
277	503.70	280	503.70	283	503.70	286	503.70
278	503.70	281	503.70	284	503.70	287	503.70
279	503.70	282	503.70	285	503.70	288	503.70
280	503.70	283	503.70	286	503.70	289	503.70
281	503.70	284	503.70	287	503.70	290	503.70
282	503.70	285	503.70	288	503.70	291	503.70
283	503.70	286	503.70	289	503.70	292	503.70
284	503.70	287	503.70	290	503.70	293	503.70
285	503.70	288	503.70	291	503.70	294	503.70
286	503.70	289	503.70	292	503.70	295	503.70
287	503.70	290	503.70	293	503.70	296	503.70
288	503.70	291	503.70	294	503.70	297	503.70
289	503.70	292	503.70	295	503.70	298	503.70
290	503.70	293	503.70	296	503.70	299	503.70
291	503.70	294	503.70	297	503.70	300	503.70

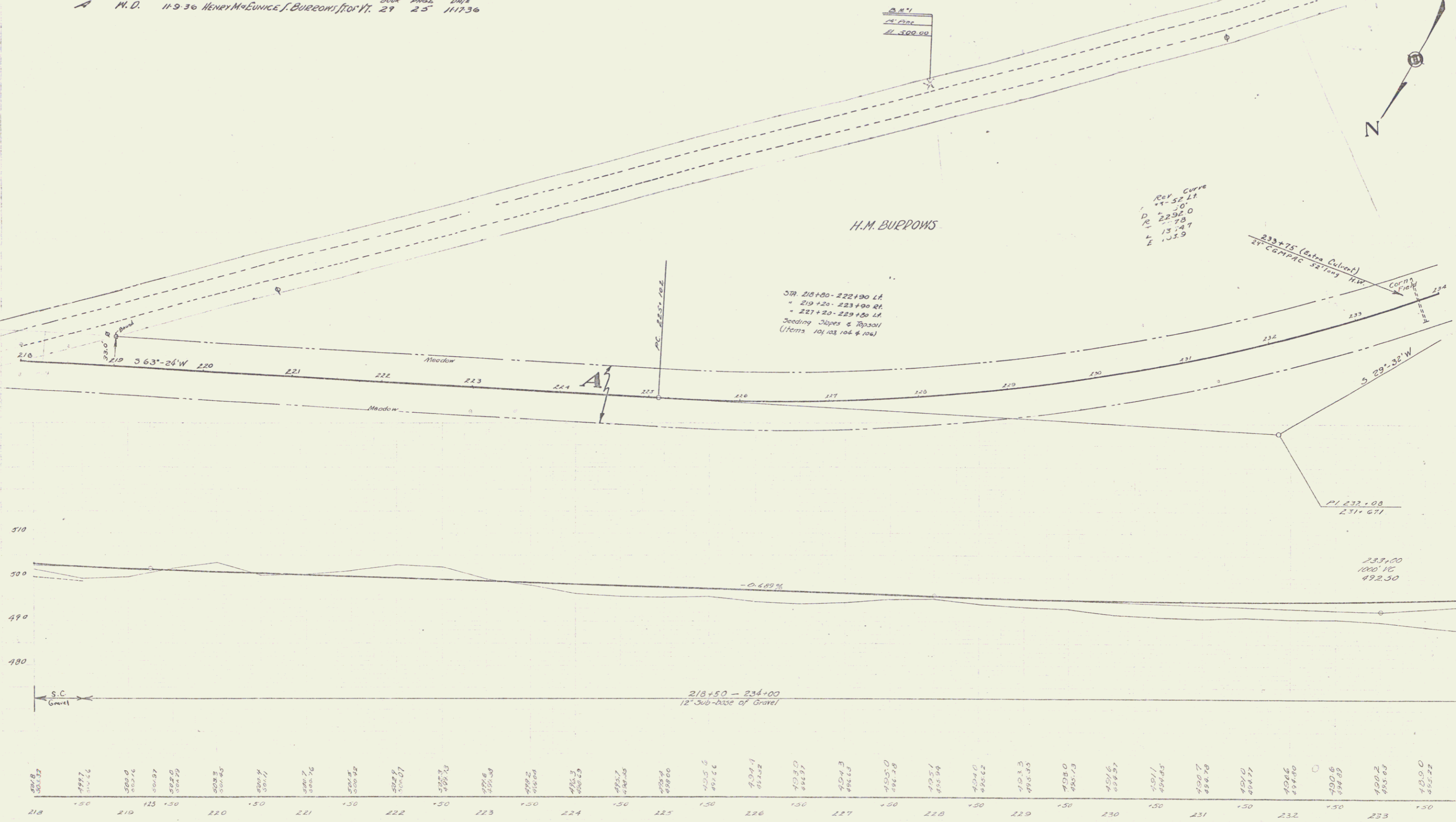
24" OAK SPIRE IN ROOT OF 24" OAK 29'-RT OF STA 217+20 EL 503.32

Parcel Kind of Date of Grantor Grantee Recorded Remarks  
 INSTRUMENT INSTRUMENT  
 A M.O. 11-9-36 Henry McEunice J. Burrows for W. 29 25 111736

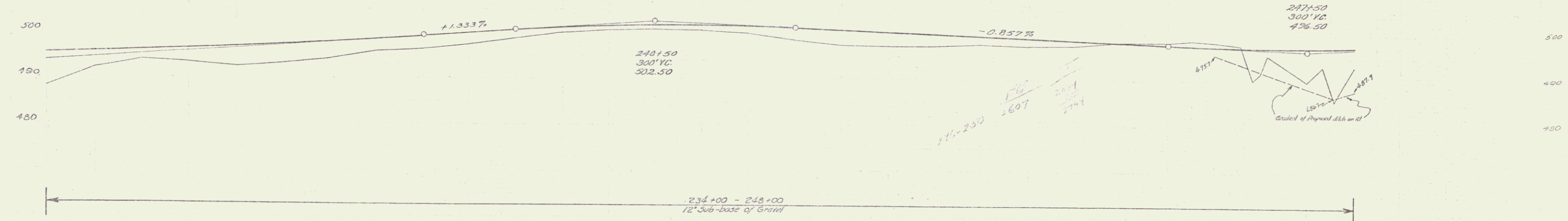
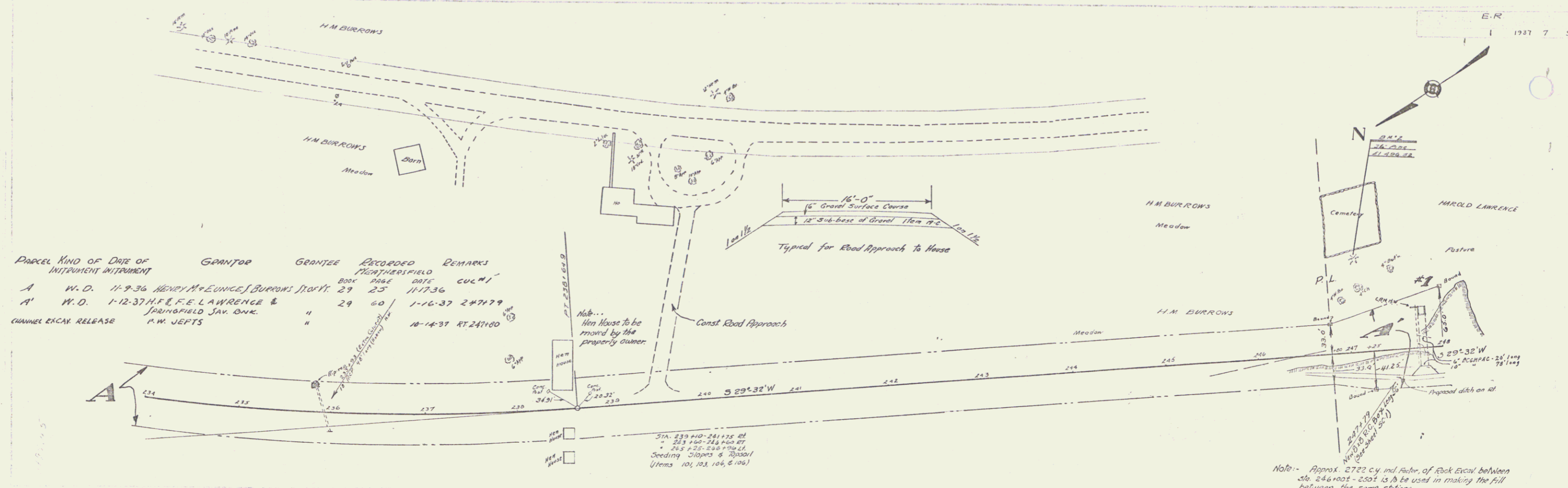
E.R. 1937 6 96

DARRETT BULLY 9/15 1936

Elevations  
 of  
 the  
 Ground



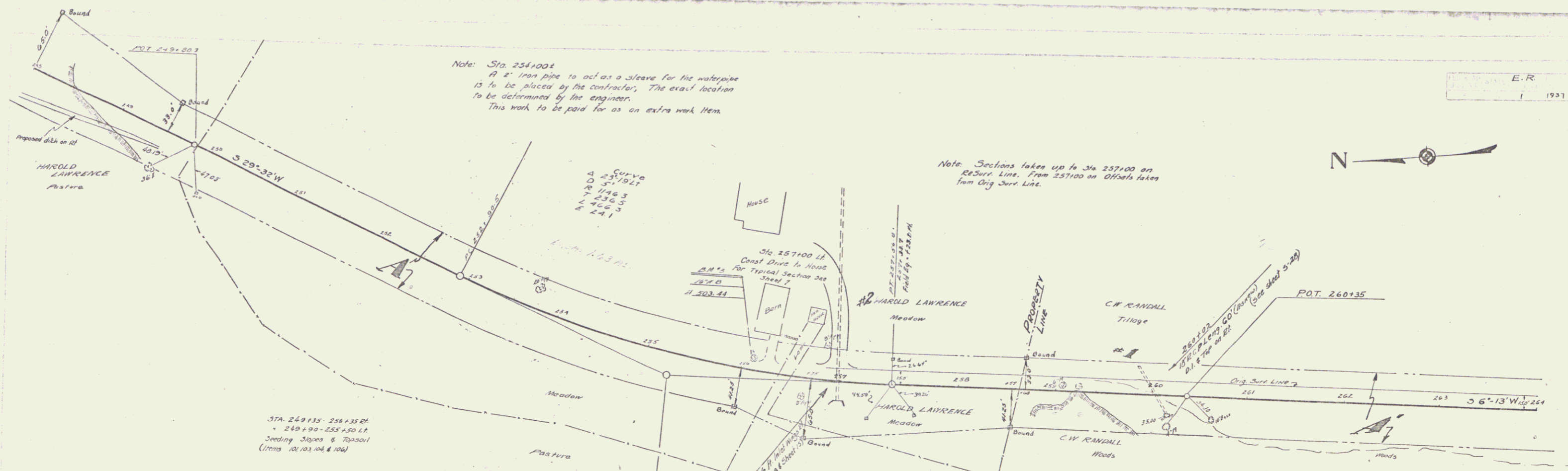
PARCEL	KIND OF INSTRUMENT	DATE OF INSTRUMENT	GRANTOR	GRANTEE	RECORDED	REMARKS
A	W.D.	11-9-36	HENRY M. & EUNICE J. BURROWS	STONY	BOOK PAGE DATE CUL. #1	
A'	W.D.	1-12-37	H.F. & F.E. LAWRENCE & FAIRFIELD SAV. BKN.	"	29 25 11-7-36	
	CHANNEL EXCAV. RELEASE		H.W. JEFTS	"	29 60 1-16-37 24779	
				"	"	18-14-31 RT 241100



Station	Elevation
234	485.45
235	482.2
236	485.74
237	483.0
238	486.00
239	483.3
240	486.46
241	482.5
242	486.31
243	483.1
244	485.90
245	482.9
246	485.53
247	486.3
248	482.17
249	485.74
250	482.8
251	486.60
252	483.0
253	485.87
254	482.5
255	485.97
256	482.0
257	485.68
258	482.5
259	485.71
260	482.0
261	485.55
262	482.4
263	485.07
264	482.3
265	485.77
266	482.2
267	485.96
268	482.2
269	485.98
270	482.6
271	485.00
272	482.4
273	485.67
274	482.3
275	485.22
276	482.3
277	485.29
278	482.7
279	485.29
280	482.4
281	485.74
282	482.17
283	485.32
284	482.3
285	485.26
286	482.29
287	482.3
288	485.31
289	482.3
290	485.24
291	482.3
292	485.29
293	482.3
294	485.29
295	482.3
296	485.29
297	482.3
298	485.29
299	482.3
300	485.29
301	482.3
302	485.29
303	482.3
304	485.29
305	482.3
306	485.29
307	482.3
308	485.29
309	482.3
310	485.29
311	482.3
312	485.29
313	482.3
314	485.29
315	482.3
316	485.29
317	482.3
318	485.29

B.M. 2 SPIKE IN ROOT OF 36" PINE 104 FT STA 247+10 EL 486.52

5



Note: Sta. 254+00  
A 2" iron pipe to act as a sleeve for the waterpipe  
is to be placed by the contractor. The exact location  
to be determined by the engineer.  
This work to be paid for as an extra work item.

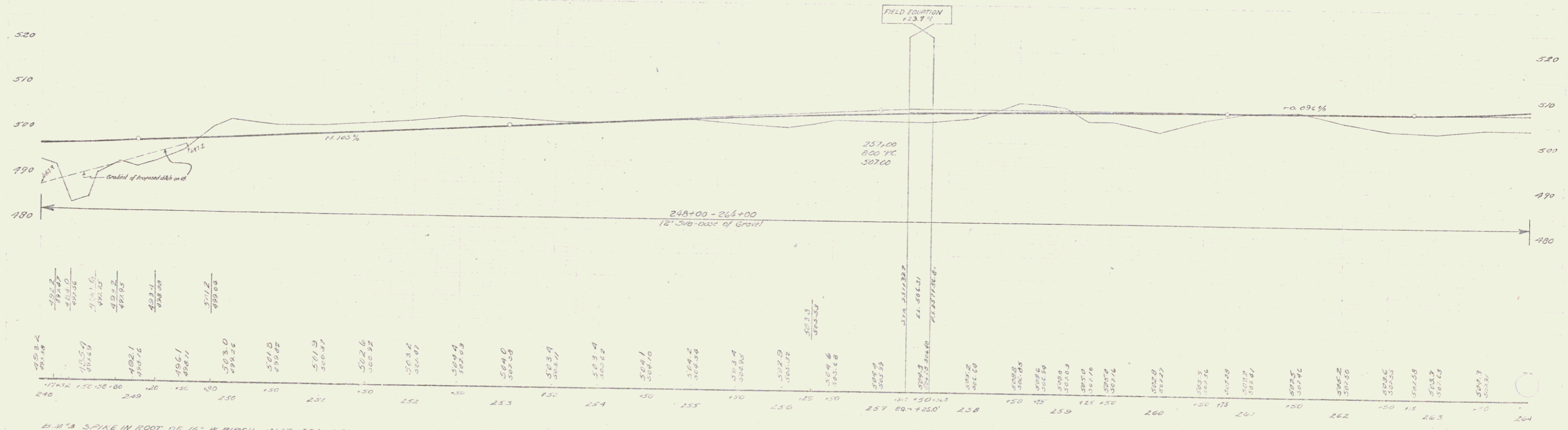
Note: Sections taken up to Sta. 257+00 on  
ReSurf. Line. From 257+00 on offsets taken  
from Orig. Surf. Line.

STA. 249+35 - 258+35 RT  
249+90 - 255+50 LT  
Seeding Slopes & Topsoil  
(Items 10, 101, 104 & 106)

PARCEL	KIND OF INSTRUMENT	DATE OF INSTRUMENT	GRANTOR	GRANTEE	RECORDED WEATHERFIELD BOOK PAGE DATE	REMARKS
A	W.D.	1-12-37	H.F. & C.E. LAWRENCE	E. SPRINGFIELD	11-60	1-16-37 257+00 CUL. #2
A'B	W.D.	1-13-37	C.W. & R. RANDALL	J.C.H. MARTIN	11-29	6-1-2 1-16-37 260+00 CUL. #1

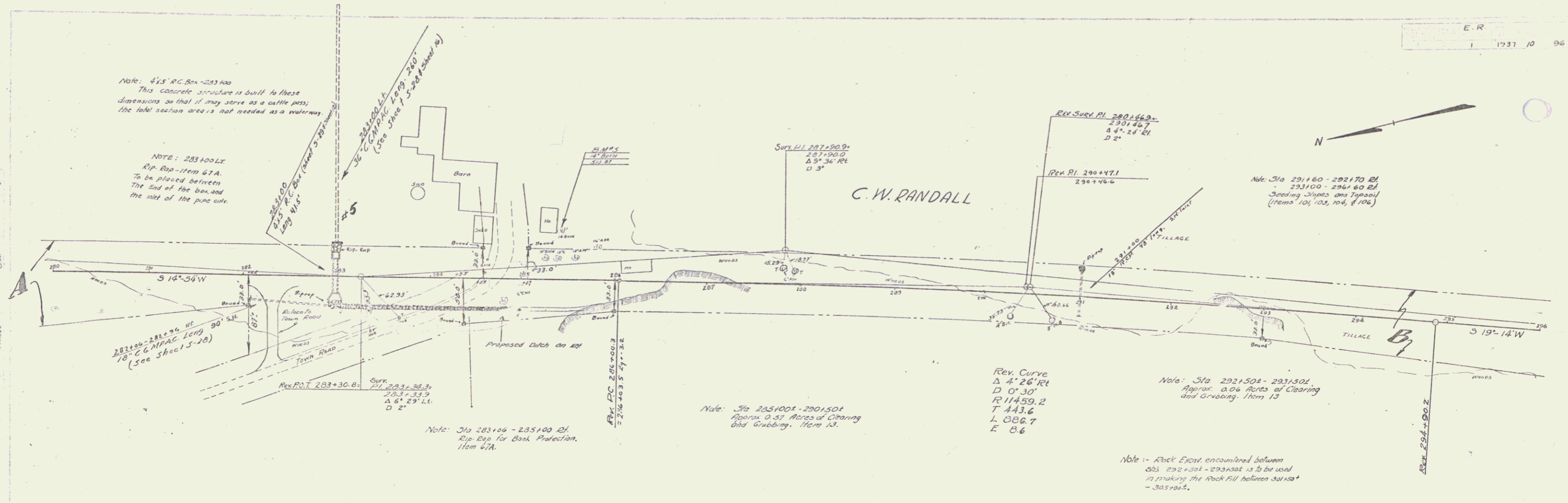
Note: Sta. 258+501 - 261+001  
Approx. 0.17 Acres of  
Clearing and Grubbing  
Item 73

Note: Approx 300 cu yd Rock Excav. between  
Sta. 253+02 - 261+002 is to be used in making  
the fill between the same stations.



16" x 3 SPIKE IN ROOT OF 16" W BIRCH 13' LT STA 254+10 EL 503+44





Note: 4' x 5' R.C. Box - 283+00  
This concrete structure is built to these dimensions so that it may serve as a cattle pass. The total section area is not needed as a waterway.

NOTE: 283+00 L.R.  
Rip Rap - Near S.T.A.  
To be placed between the end of the box and the rest of the pipe culvert.

283+00  
18" C.C. PIPE Long  
(see sheet 5-28)

283+00  
18" C.C. PIPE Long  
(see sheet 5-28)

283+30.0  
SVC L 287+90.9  
PVI 288+47.1  
D 2'

283+30.0  
SVC L 287+90.9  
PVI 288+47.1  
D 2'

283+30.0  
SVC L 287+90.9  
PVI 288+47.1  
D 2'

Note: Sta 285+00 - 290+50  
Approx. 0.57 Acres of Clearing and Grubbing. Item 13.

REV. CURVE  
Δ 4' 26" Rt  
D 0' 30"  
R 11459.2  
T 443.6  
L 886.7  
E 8.6

Note: Sta 291+80 - 293+50  
Approx. 0.06 Acres of Clearing and Grubbing. Item 13

Note: - Rock Fills encountered between 285+00 - 293+50 is to be used in making the Rock Fill between 285+00 - 293+50.

5/16  
7/16

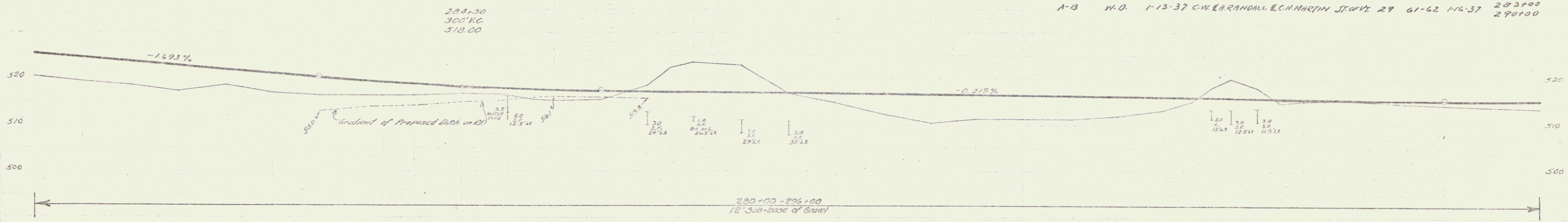
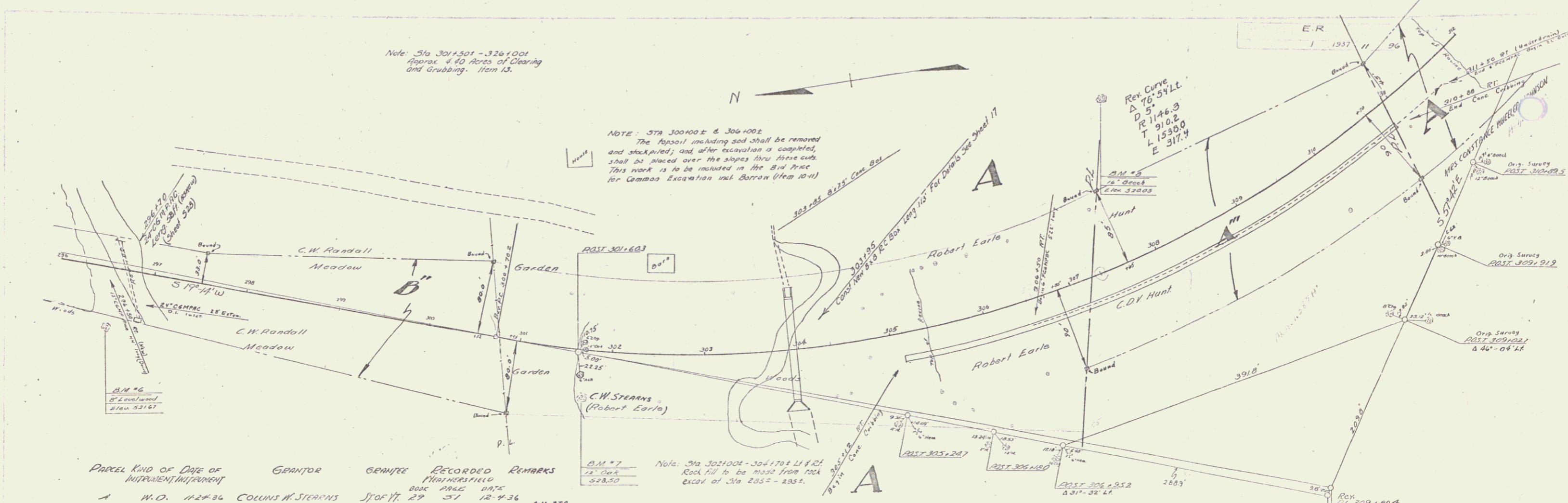


DIAGRAM	DATE OF INSTRUMENTATION	GRANTOR	GRANTEE	RECORDED	REMARKS
A-B	W.O.	1-13-37 C.W. RANDALL & C.H. MARTIN	STATE	29 61-62 116-37	283+00 290+00

STATION	ELEVATION	STATION	ELEVATION	STATION	ELEVATION	STATION	ELEVATION
280+00	518.00	283+00	518.00	286+00	518.00	289+00	518.00
281+00	518.00	284+00	518.00	287+00	518.00	290+00	518.00
282+00	518.00	285+00	518.00	288+00	518.00	291+00	518.00
283+00	518.00	286+00	518.00	289+00	518.00	292+00	518.00
284+00	518.00	287+00	518.00	290+00	518.00	293+00	518.00
285+00	518.00	288+00	518.00	291+00	518.00	294+00	518.00
286+00	518.00	289+00	518.00	292+00	518.00	295+00	518.00
287+00	518.00	290+00	518.00	293+00	518.00	296+00	518.00
288+00	518.00	291+00	518.00	294+00	518.00		
289+00	518.00	292+00	518.00	295+00	518.00		
290+00	518.00	293+00	518.00	296+00	518.00		
291+00	518.00	294+00	518.00				
292+00	518.00	295+00	518.00				
293+00	518.00						
294+00	518.00						
295+00	518.00						
296+00	518.00						

Note: Sta 301+501 - 326+001  
Approx. 4.40 Acres of Clearing  
and Grubbing. Item 13.

NOTE: STA 300+00 ± & 306+00 ±  
The topsoil including sod shall be removed  
and stockpiled; and after excavation is completed,  
shall be placed over the slopes thru three cuts.  
This work is to be included in the Bid Price  
for Common Excavation and Barron (Item 10-1)



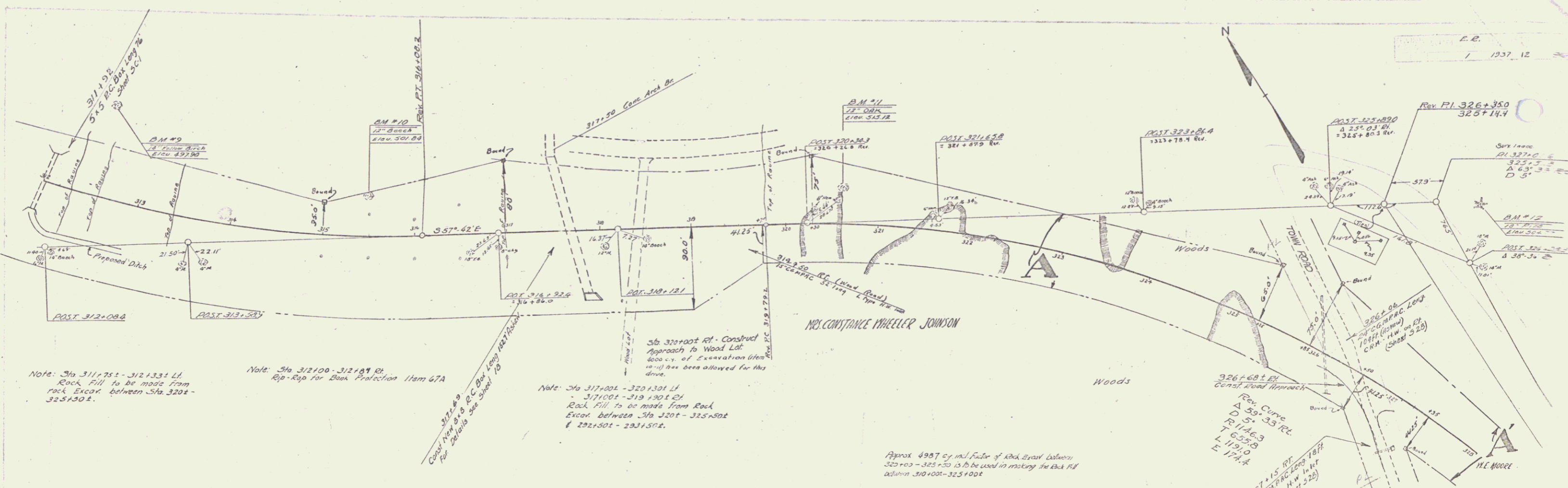
PARCEL	KIND OF IMPROVEMENT	DATE OF IMPROVEMENT	GRANTOR	GRANTEE	RECORDED BOOK PAGE DATE	REMARKS
A	W.D.	12-24-36	COLLINS H. STEARNS	STOFER	29 31 12-24-36	CUL STA
A'	W.D.	12-12-36	CONSTANCE W. JOHNSON	"	29 54 12-12-36	
A''	W.D.	1-10-37	C.M. & R. RANDALL & C.H. MARTIN	"	29 61-62 1-10-37	2961.60
A'''	W.D.	9-24-37	CLEVE D. V. HUNT	"	29 104 9-24-37	

Note: Sta 302+00 ± - 304+70 ± 11' ± 21"  
Culvert to be placed from 1924  
excav. of Sta 285 - 285 ±.



BM #6 Spike in post of 8' Ventilated 60' R. STA 296+138. Elev. 531.67  
BM #7 Spike in post of 12' Oak 50' RA. STA 301+71. Elev. 528.50  
BM #8 Spike in post of 16' 80x175 RA. STA 309+121. Elev. 520.05

Scale E.R. 1/4" = 1'-0"  
Scale (H) 1/8" = 50' - 0"



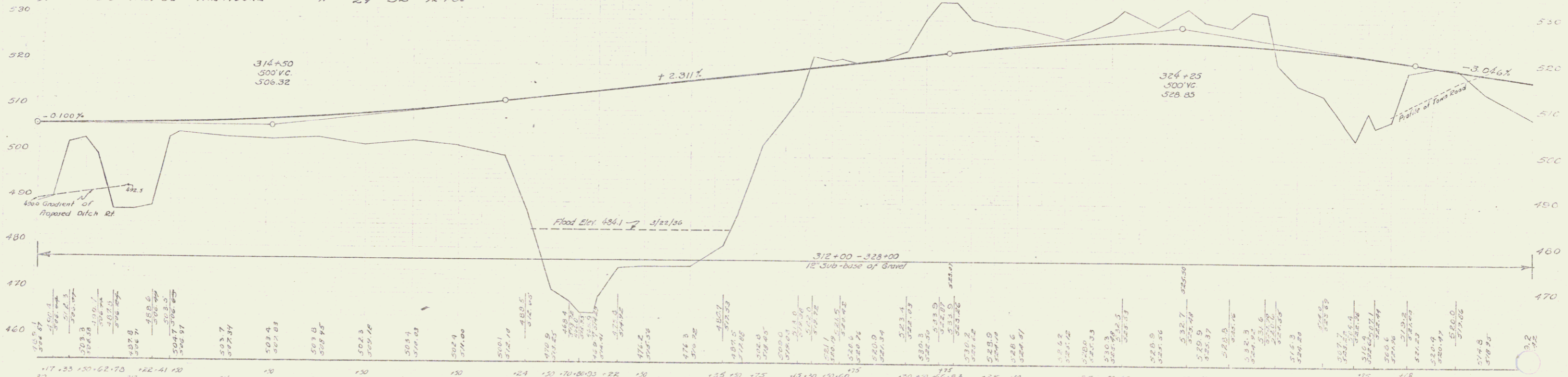
Note: Sta 311+75.1 - 312+33.1 LI  
Rock fill to be made from  
rock excav. between Sta 320+  
32+50.1.

Note: Sta 312+00 - 312+89.0  
Rip-Rip for Bank Protection Item GTA

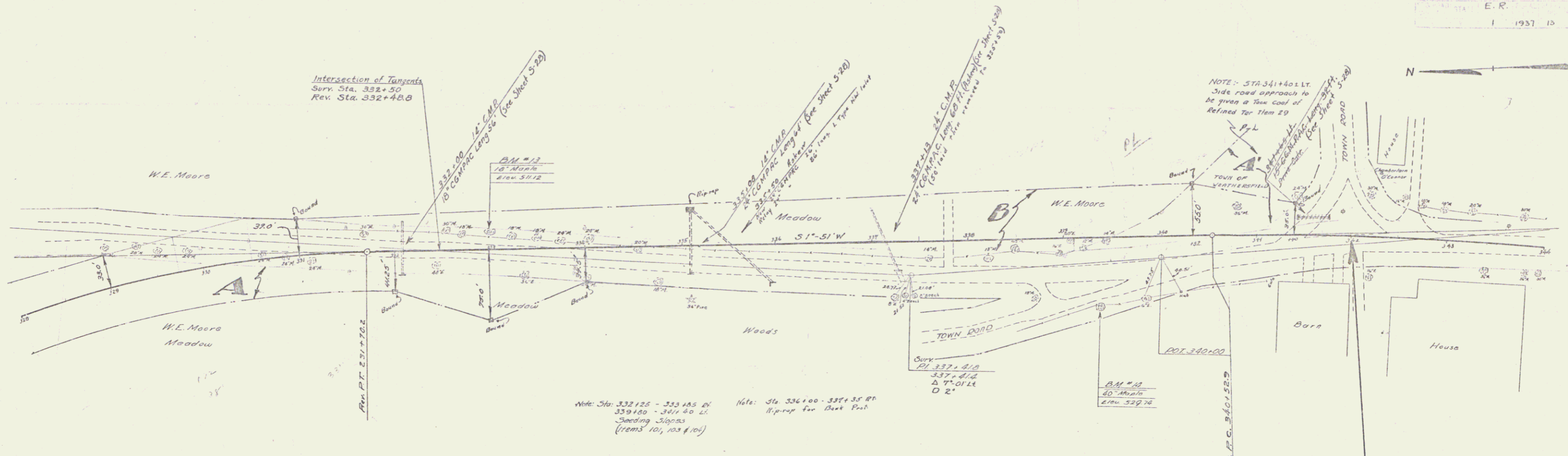
Note: Sta 317+00.1 - 320+30.1 LI  
317+00.1 - 319+30.1 LI  
Rock fill to be made from Rock  
Excav. between Sta 320+  
32+50.1 - 321+50.1.

Approx 4987 cu. yd. Filler of R.O.A. Excav. between  
320+00 - 325+50 is to be used in making the Rock Fill  
between 310+00 - 325+00.

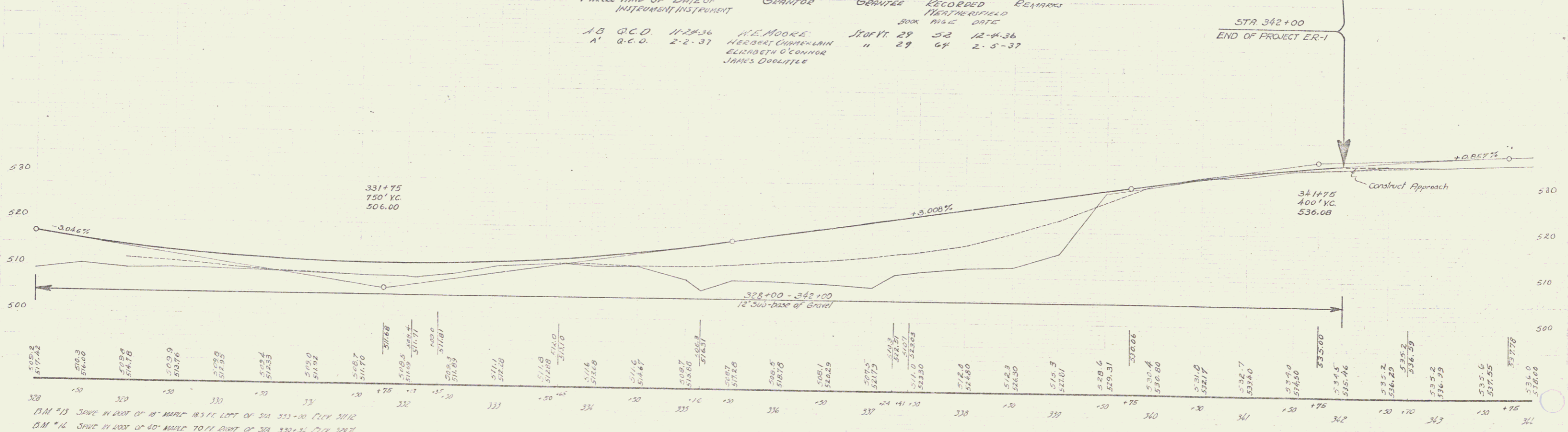
Parcel	Kind of	Date of	Grantor	Grantee	Recorded	Remarks
A	W.D.	12-12-36	CONSTANCE W. JOHNSON	JEFFREY	27	12-12-36
A-B	G.C.O.	11-22-36	M.S. MOORE	"	29	12-7-36



B.M. # 2 5'x6" IN ROOT OF 14" YELLOW DUNE 47 FT LEFT OF STA 312+45 ELEV 497.00  
B.M. # 3 5'x6" IN ROOT OF 12" DUNE 40 FT LEFT OF STA 313+30 ELEV 501.06  
B.M. # 4 5'x6" IN ROOT OF 12" DUNE 35 FT LEFT OF STA 314+22 ELEV 501.12  
B.M. # 5 5'x6" IN ROOT OF 14" DUNE 20 FT LEFT OF STA 315+30 ELEV 501.17



PARCELS	NO. OF DATE OF INSTRUMENT	GRANTOR	GRANTEE	RECORDED BOOK PAGE	REMARKS
A, B	O.C.D. 1-28-36	W.E. MOORE	HERBERT O'CONNOR	29 52	12-4-36
A'	O.C.D. 2-2-37	HERBERT O'CONNOR	ERBERT O'CONNOR	" 29 64	2-5-37
			JAMES DOOLITTLE		



BM #13 SPK IN 200' OF 18" WIDE 18.5' LOT OF STA 332+00 (Elev 511.2)

BM #14 SPK IN 200' OF 40" WIDE 70' LOT OF STA 330+31 (Elev 506.2)

Vol 29 Pg 507

Warranty Deed. State of Vermont to Clarence T. Morse

KNOW ALL MEN BY THESE PRESENTS:

That, the State of Vermont, acting by its Highway Board, a board duly created by law, and in accordance with Section 4705 of the Public Laws of the State of Vermont, in the consideration of One Dollar and other valuable consideration, (\$1.00), paid to its full satisfaction by Clarence T. Morse, of Windsor, in the County of Windsor and State of Vermont, does hereby give, grant, bargain, sell and convey unto the said Clarence T. Morse, a certain piece of land in the Town of Weathersfield in the County of Windsor and State of Vermont; and described as follows, viz:

Meaning to convey all the real estate and buildings thereon, as conveyed to the State of Vermont by Collins W. Stearns by a Warranty Deed, November 24, 1936, said deed being recorded in Book 29, Page 51 of Weathersfield Land Records, to which reference may be had for a more particular description, but excepting and reserving from the above granted parcel, (which contains, by estimation, 15 Acres) a parcel of land 180 feet wide, 90 feet each side of the established center line of the highway project known as E. R. (1), and extending from the north to the south line of said granted parcel and containing 2.8 Acres, more or less, all as shown on attached print, which is hereby made a part hereof. Project E. R. (1) is on highway Route 5.

TO HAVE AND TO HOLD, said granted premises, with all the privileges and appurtenances thereof, unto the said Clarence T. Morse, and his heirs, executors and administrators, to them and their own use and behoof forever, and the said State of Vermont, acting by its State Highway Board, does covenant with the said Clarence T. Morse that until the ensueing of these presents, it is well seized of the premises, as a good indefeasible estate in fee simple, and has good right to grant and convey the same in manner and form as above written and that the same are free from every encumbrance whatsoever.

And furthermore, the said State of Vermont acting by its State Highway Board, does by these presents, bind itself and its assigns, forever to Warrant and Defend the above premises to the said Clarence T. Morse and his heirs against all claims and demands whatsoever.

In Witness Whereof, we hereunto set our hands and seal this 23 day of August 1940.

In presence of:

E. Madeline Gladding  
A. A. Doe

State of Vermont  
By: William F. Corry State  
W. F. Corry  
Oscar A. Rixford Highway Board  
John A. Kilbourn

Geo. H. Amidon  
A. A. Doe

Approved: Benjamin Gates  
Auditor of Accounts, State of Vermont

State of Vermont  
Washington County, ss.  
At Montpelier 25 this day of August A. D., 1940, personally appeared William F. Corry, Oscar A. Rixford, John A. Kilbourn-Members of the State Highway Board, and Benjamin Gates, Auditor of Accounts, and acknowledged this instrument, by them sealed and subscribed, to be their free act and deed, and the free act and deed of the State of Vermont.

Before me: A. A. Doe  
Notary Public

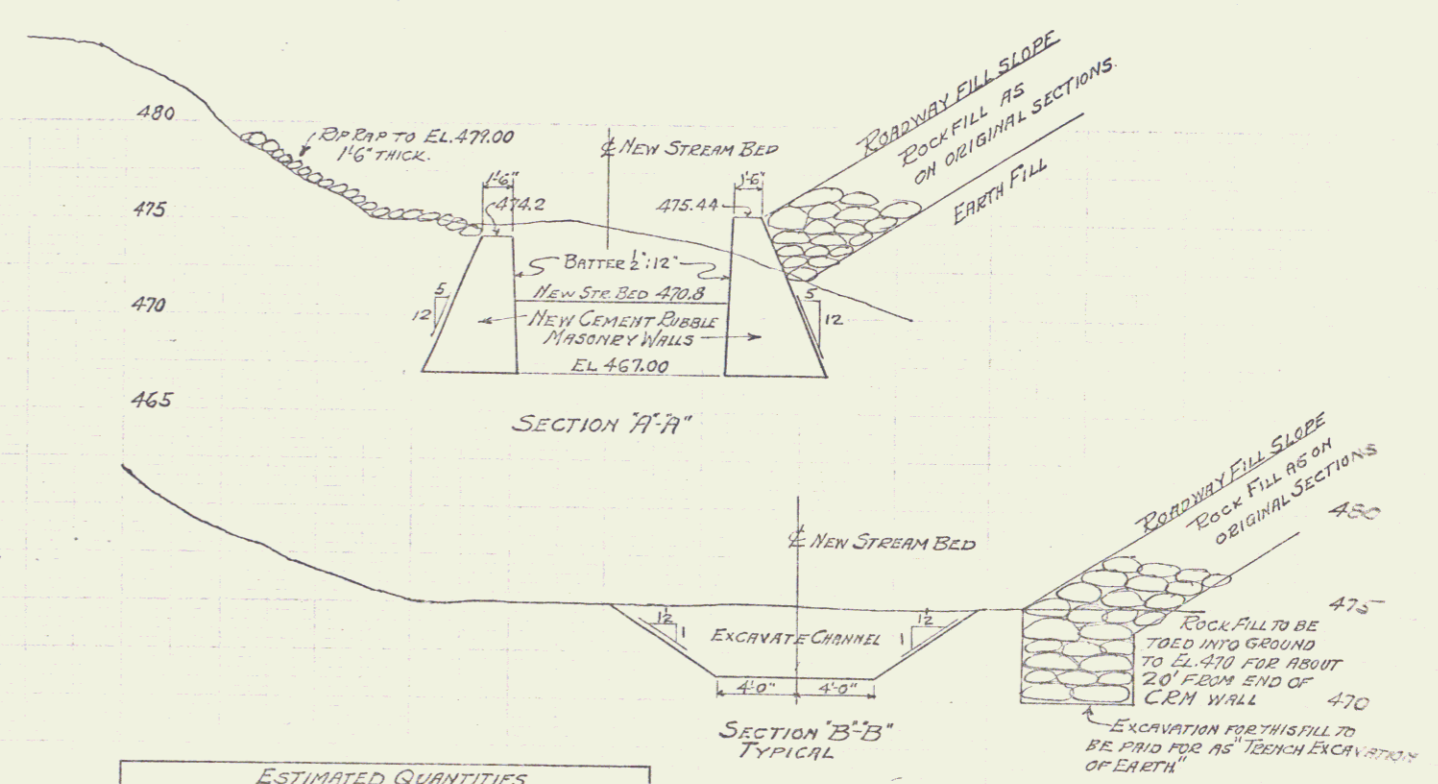
Weathersfield Town Clerk's Office, September 7, A. D. 1940, at 9:30 A.M.  
Received the deed of which the foregoing is a true record. (No stamps.)

Attest, *Wm. H. Salmon*  
Town Clerk









ESTIMATED QUANTITIES		
No.	ITEM	UNIT QUANTITY
15	CHANNEL EXCAVATION	CY 140
16	STRUCTURE EXCAVATION	" 103
45	CEMENT RUBBLE MASONRY	" 35
67	EQUIPMENT FOR BANK PROT. (MODIFIED)	" 50
12	TRENCH EXCAVATION OF EARTH	" 22

CORRECT:  
*(Signature)*  
 BRIDGE ENGINEER

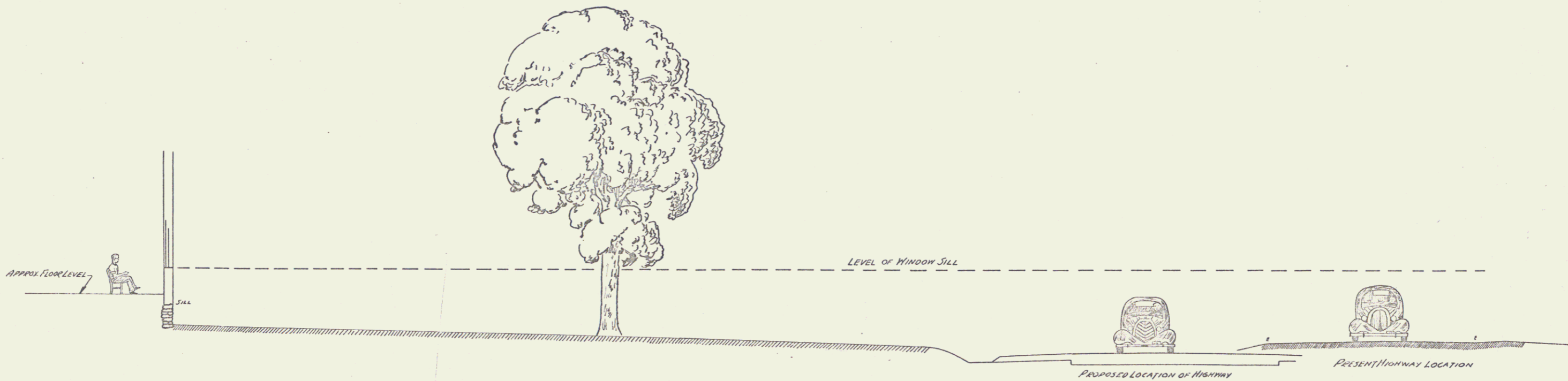
APPROVED: *(Signature)*  
 HIGHWAY COMMISSIONER

CULVERT REVISIONS  
 RIGHT OF STA. 318+00±  
 WEATHERSFIELD  
 E.R.-1

SCALE: PLAN & PROFILE - 1" = 10'  
 SECTIONS - 1" = 5'

SHEET No. 18A OF 96

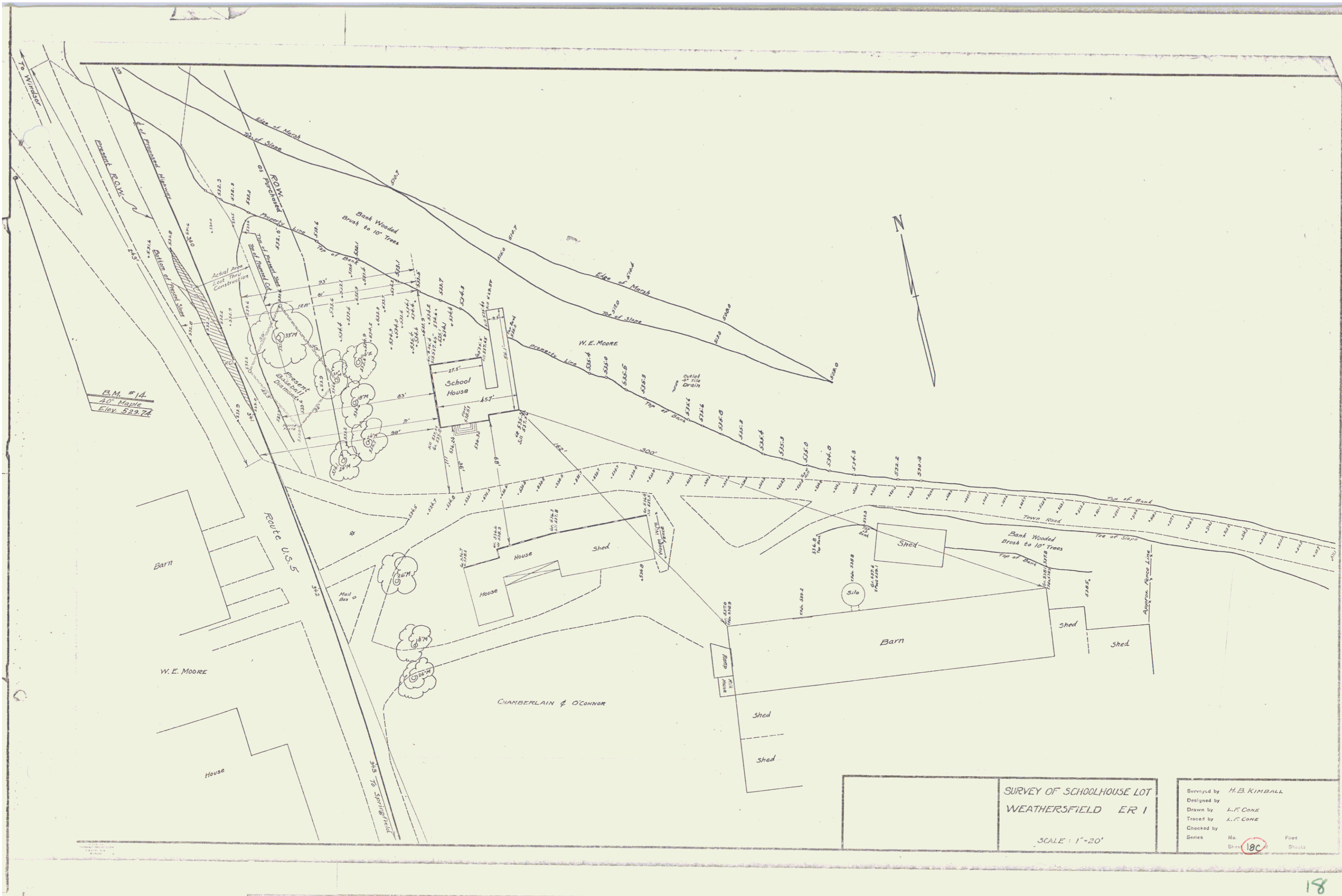
16



SECTION AT APPROX. STA. 341+00

ESTIMATED QUANTITIES

<p><b>SURVEY OF SCHOOLHOUSE LOT</b> <b>WEATHERSFIELD - ER-1</b></p>		<p>Surveyed by <i>H.B. KIRKALL</i> JUNE 15, 1937</p>
<p>SCALE: 1" = 5' -</p>		<p>Drawn by Traced by Checked by Series</p>
		<p>No. <b>188</b> Filed Sheet <b>188</b> of <b>188</b> Sheets</p>



B.M. #14  
4.0 Maple  
Elev. 529.72

SURVEY OF SCHOOLHOUSE LOT  
WEATHERSFIELD ER 1  
SCALE: 1"=20'

Surveyed by	H.B. KIMBALL
Designed by	
Drawn by	L.F. CONE
Traced by	L.F. CONE
Checked by	
Series	No. 180 Sheet 180

