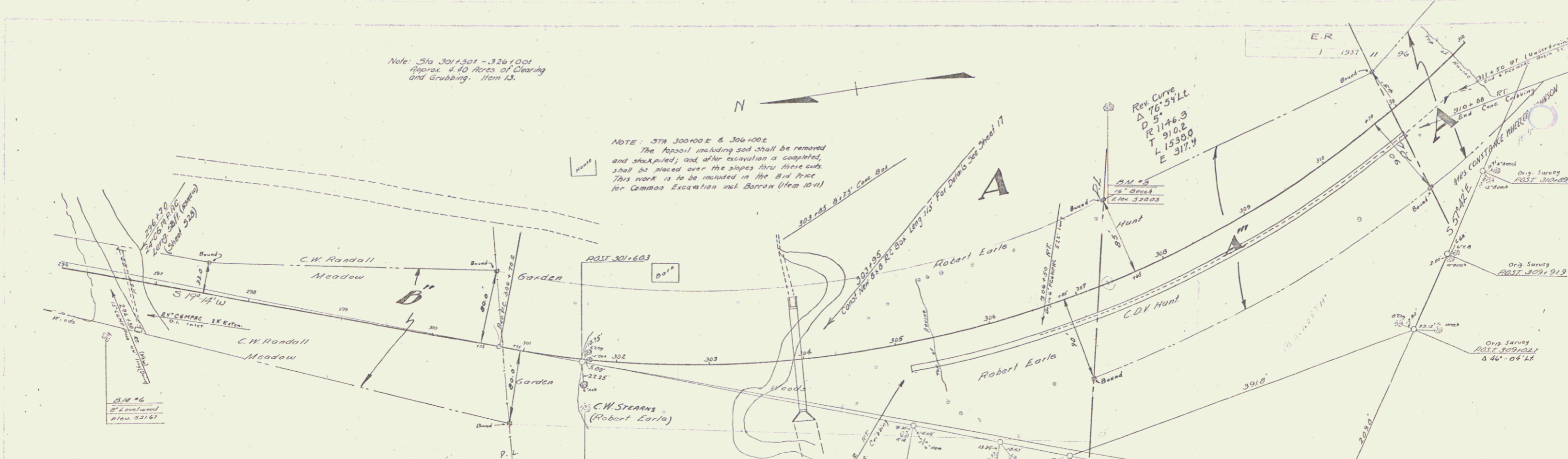


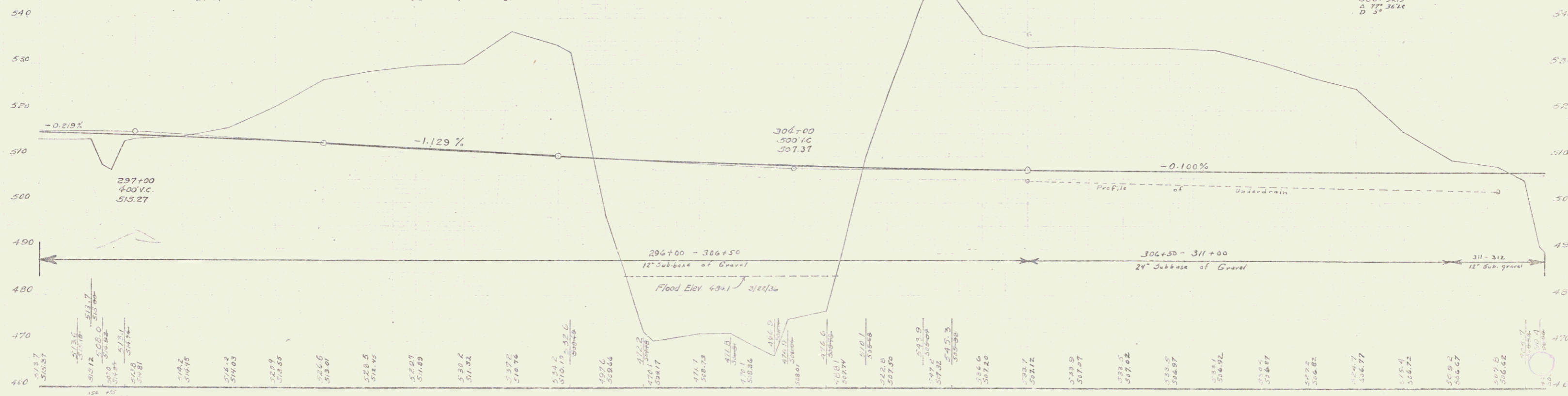
Note: Sta 301+501 - 326+001  
Approx. 4.40 Acres of Clearing  
and Grubbing. Item 13.

NOTE: STA 300+00 ± & 306+00 ±  
The topsoil including sod shall be removed  
and stockpiled; and after excavation is completed,  
shall be placed over the slopes thru three cuts.  
This work is to be included in the Bid Price  
for Common Excavation and Barron (Item 10-1)



PARCEL	KIND OF IMPROVEMENT	DATE OF IMPROVEMENT	GRANTOR	GRANTEE	RECORDED BOOK PAGE DATE	REMARKS
A	W.D.	12-24-36	COLLINS H. STEARNS	STOF 77	29 31	12-24-36 CUL STA
B	W.D.	12-12-36	CONSTANCE W. JOHNSON	"	29 54	12-12-36
B'	W.D.	1-10-37	C.W. RANDALL RANDALL TCH. MARTIN	"	29 61-62	1-10-37 296+00
A'	W.D.	9-24-31	CLYDE D. V. HUNT	"	29 104	9-24-31

Note: Sta 302+00 ± - 304+70 ± 11 ft. of  
Rock fill to be placed from 1924  
excav. of Sta 285 - 285 ±.



296 140 150 160 170 180 190 200 210 220 230 240 250 260 270 280 290 300 310 320 330 340 350 360 370 380 390 400 410 420 430 440 450 460 470 480 490 500 510 520 530 540

BM #6 Spike in foot of 8' levelled 60' R. Sta. 296+138 Elev. 531.67  
BM #7 Spike in foot of 12' 0" 50' R. Sta. 301+71 Elev. 528.50  
BM #8 Spike in foot of 16' 0" 175' R. Sta. 309+121 Elev. 520.05

Scale E.R. 1/4" = 1' 0"  
Scale (H) 1/8" = 50' 0"