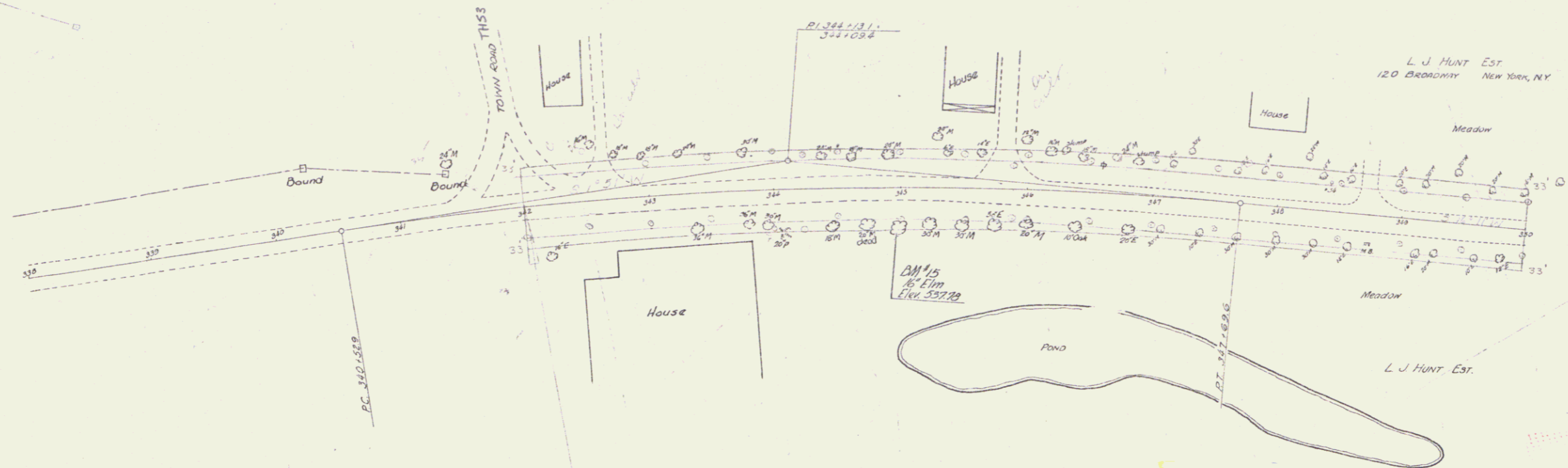


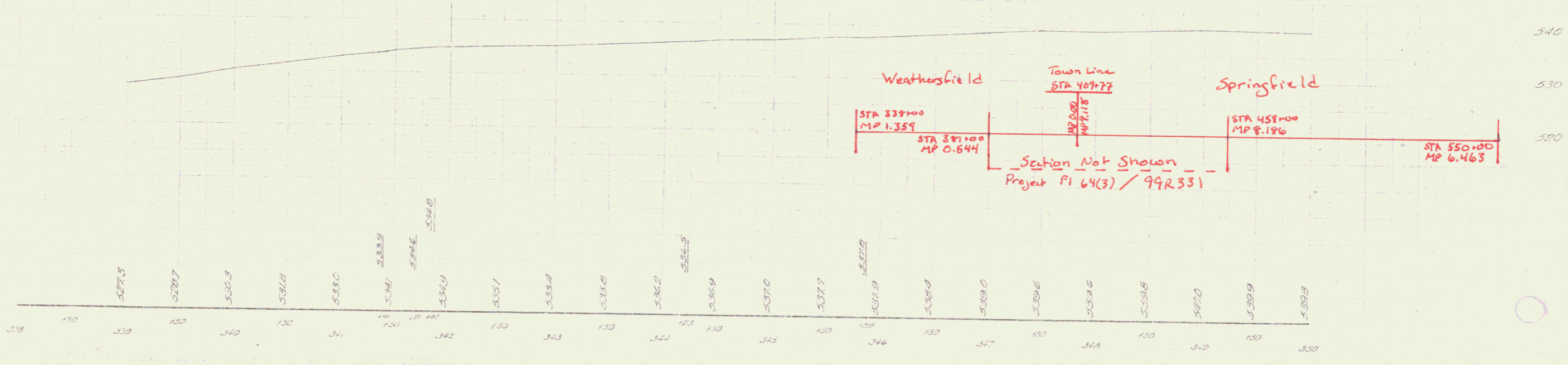
DATE: 12/1/40
BY: [Signature]

Weatherfield Springfield
U.S. Rte #5

Weatherfield Springfield
64 M.
NOT built.



RIGHT-OF-WAY DIVISION
 TOWN FILE
 PERPETUAL
 Rte Town of USS
 (To Be Returned To R.O.W. Division)



12/1/40

WEATHERFIELD, SPRINGFIELD
 STATE 64 M
 SHEET 2
 DIST. # 2 PLANS