

INDEX OF SHEETS

SHEET NO 1	TITLE PAGE
2	TYPICAL CROSS-SECTION OF IMPROVEMENT DOUBLE TACK COAT OF REFINED TAR WITH PEA STONE SEAL. ITEM 512-A
3	BANKING AND WIDENING TABLES
4	QUANTITY SHEET (ITEMS)
5	QUANTITY SHEET (DRAINAGE)
6-8	EARTHWORK SHEETS
9-14	PLAN AND PROFILE SHEETS
15	PLAN OF 72" CORR. GALV. METAL PLATE PIPE (STA. 421+24)
16	PLAN OF 60" CORR. GALV. METAL PLATE PIPE (STA. 423+07)
17	DETAILS OF GATTLE PASS (STA. 424+20)
18	STEEL SCHEDULE FOR GATTLE PASS (STA. 424+20)
19	STANDARD STRUCTURE SHEET R9-56-2 (DROP INLETS)
20	STANDARD STRUCTURE SHEET R9-56-3 (MARKERS)
21	STANDARD STRUCTURE SHEET R9-56-4 (DRAINAGE)
22	STANDARD STRUCTURE SHEET R9-56-6 (TYPICAL GRADING)
23	STANDARD STRUCTURE SHEET R9-56-11 (THREE CABLE GUARD RAIL)
24	STANDARD STRUCTURE SHEET R9-56-12 (BARRICADES, SIGNS AND LIGHTS)
25-65	CROSS SECTIONS

STATE OF VERMONT  
DEPARTMENT OF HIGHWAYS

PROPOSED IMPROVEMENT

FEDERAL AID PROJECT

TOWNS OF WEATHERSFIELD-SPRINGFIELD

COUNTY OF WINDSOR

U.S. ROUTE 5

WINDSOR-BELLOWS FALLS ROAD

BEGINNING AT A POINT 1986.3 FEET NORTH OF WEATHERSFIELD-SPRINGFIELD TOWN LINE AND EXTENDING SOUTHERLY 5994.2 FEET

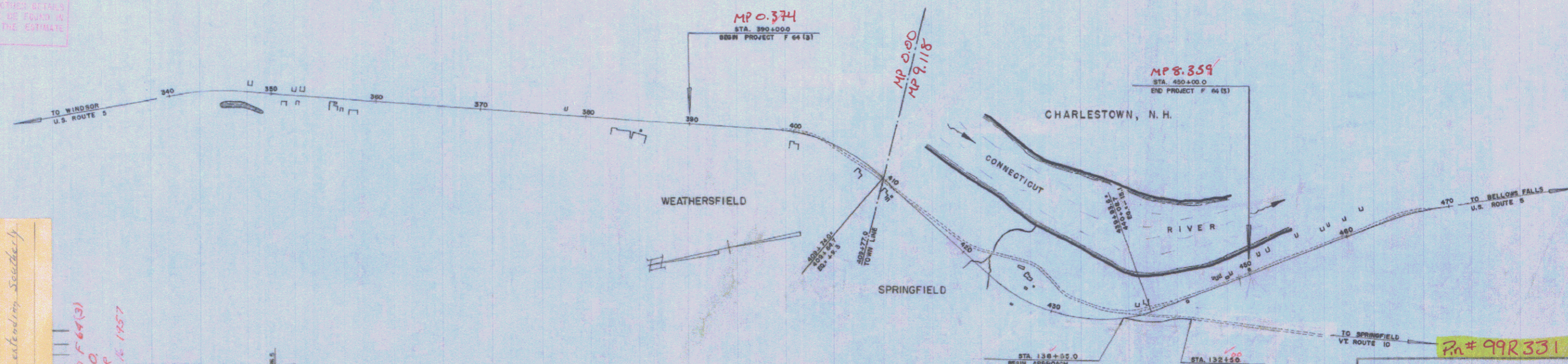
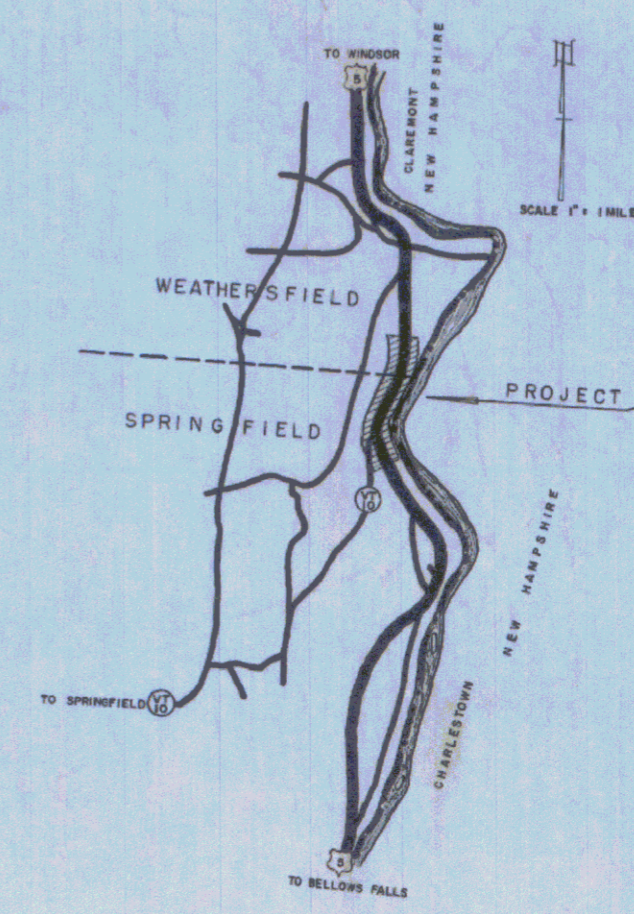
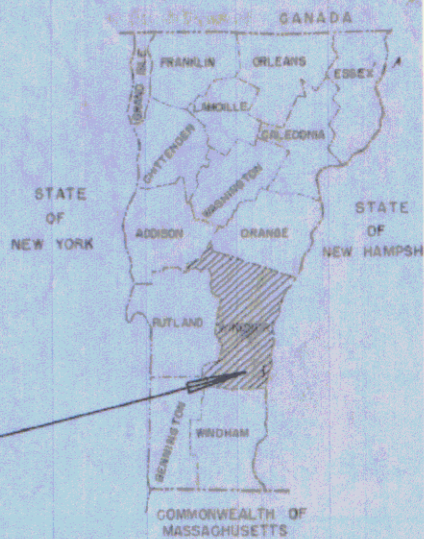
LENGTH OF PROJECT 5994.2 = 1.135 MILES.

DESIGN	DESIGNATION
ADT (1958)	2800
ADV	370
D	60%
T	12%

PROJECT NAME AND NUMBER WEATHERSFIELD-SPRINGFIELD F 64(3)  
SURFACE TYPE DOUBLE TACK COAT OF REFINED TAR WITH PEA STONE SEAL  
PIVEMENT AREA 20,834 S.F.RECORD PLANS MATERIALS  
SUB-BASE OF GRAVEL TOWN OF WEATHERSFIELD, N.H.  
SUB-BASE OF CR. GRAVEL TOWN OF SPRINGFIELD, N.H.  
REF. TAR Barrett Co., Edgewater, N.J.  
CEMENT Lone Star, Dublin, N.C.  
CONCRETE Miller Const. Co., Windsor, Vt.  
REIN. STEEL J.T. Rogers, Boston, Mass.  
R.C.P. Vt. Const. Pipe Co., Windsor, Vt.  
ACCGIMP N.E. Metal Co., Palmer, Mass.  
THREE CABLE G.D. RAIL  
STEEL GUIDE POSTS  
CONTRACTOR E.R. Putnam Const. Co.  
RESIDENT ENGR. M. Van Klee Jr.  
INSPECTOR H.J. Washer  
RECORD PLANS H.J. Washer  
CONTRACT DATED Nov. 1, 1956  
CONTRACT STARTED Nov. 15, 1956  
CONTRACT COMPLETED October 16, 1957  
CONTRACT ACCEPTED October 16, 1957

NOTE: ANY FURTHER INFORMATION CONCERNING FINAL DIMENSIONS OR OTHER DETAILS RELATIVE TO THIS PROJECT MAY BE FOUND IN EITHER THE FIELD BOOKS OR THE ESTIMATE FILE.

FED. ROAD DIVISION NO.	STATE	PROJECT NO.	SHEET NO.	TOTAL SHEETS
1	VT	F 64(3)	1	7



COUNTY Windsor  
TOWN Weathersfield  
PROJECT F 64(3)  
CONTRACTOR E. Putnam Const. Co.  
LOCATION Beginning 1986.3 Feet North of Weathersfield, Springfield Town Line, and extending Southerly 5994.2 Feet.  
RECORD PLANS H.J. WASHER  
COMPLETED OCTOBER 16, 1957

GROUND ELEVATION	STATION	LINE
340	340+00	U
350	350+00	U
360	360+00	U
370	370+00	U
380	380+00	U
390	390+00	U
400	400+00	U
410	410+00	U
420	420+00	U
430	430+00	U
440	440+00	U
450	450+00	U
460	460+00	U
470	470+00	U

CURVE DATA	
DEFLECTION OF ANGLE	Δ
DEGREE OF CURVE	D
RADIUS OF CURVE	R
TANGENT DISTANCE	T
LENGTH OF CURVE	L
EXTERNAL DISTANCE	E
POINT OF INTERSECTION	P.I.
POINT OF CURVE	P.C.
POINT OF TANGENT	P.T.
POINT ON TANGENT	P.O.T.
POINT ON SUB-TANGENT	POST

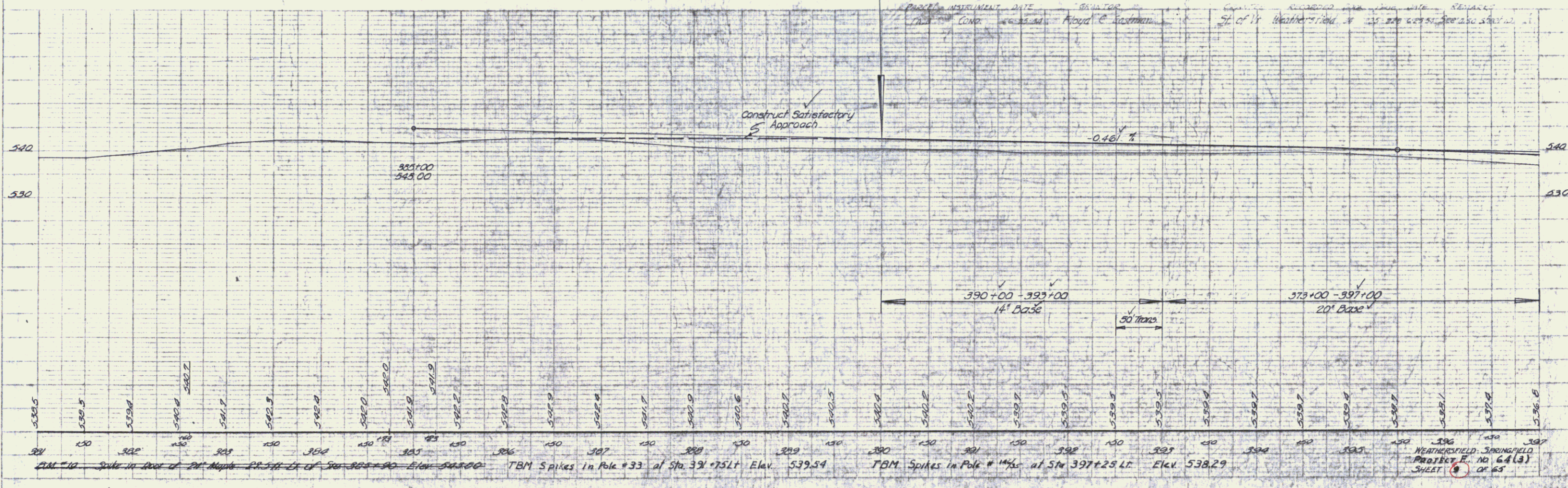
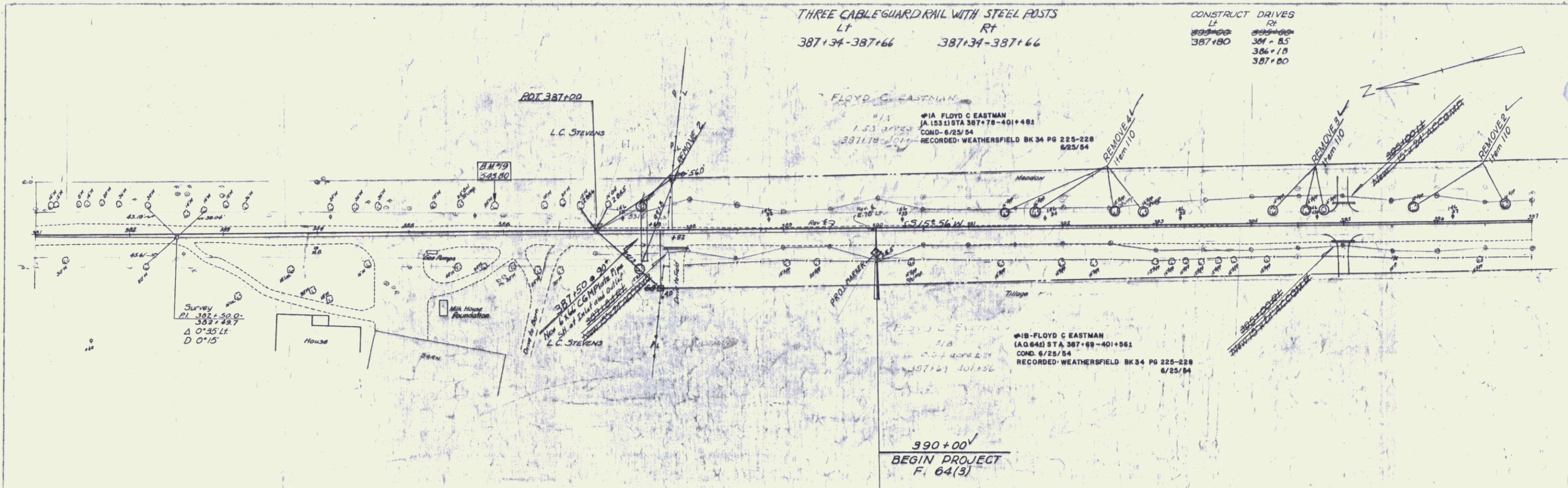
SCALES	
TITLE	1" = 500'
TYPICAL	1" = 2'
PLAN	1" = 50'
PROFILE HORIZONTAL	1" = 50'
PROFILE VERTICAL	1" = 10'
CROSS-SECTIONS	1" = 5'

THESE PLANS ARE SUBJECT TO SUCH REVISIONS AS MAY BE REQUIRED BY THE BUREAU OF PUBLIC ROADS OR THE COMMISSIONER OF HIGHWAYS.  
CONSTRUCTION IS TO BE CARRIED ON IN ACCORDANCE WITH THE PLANS AND THE STANDARD SPECIFICATIONS FOR HIGHWAY AND BRIDGE CONSTRUCTION OF JANUARY 1956, SUBMITTED TO THE BUREAU OF PUBLIC ROADS AND APPROVED JULY 9, 1956, INCLUDING ALL SUBSEQUENT APPROVED REVISIONS AND SUCH REVISED SPECIFICATIONS AND SPECIAL PROVISIONS AS ARE SUBMITTED WITH THE PLANS.

APPROVED SUPERVISOR ENGINEER DATE Sept 21 1956	APPROVED DISTRICT ENGINEER DATE Sept 24 1956	APPROVED BRIDGE ENGINEER DATE	APPROVED SURVEY ENGINEER DATE SEPTEMBER 21, 1956	APPROVED CITY ENGINEER DATE OCTOBER 4 1956	DEPARTMENT OF COMMERCE BUREAU OF PUBLIC ROADS PROJECT # 1 NO. 64(3)
--	--	-------------------------------------	--	--	---

THREE CABLE GUARD RAIL WITH STEEL POSTS  
 Lt Rt  
 387+34-387+66 387+34-387+66

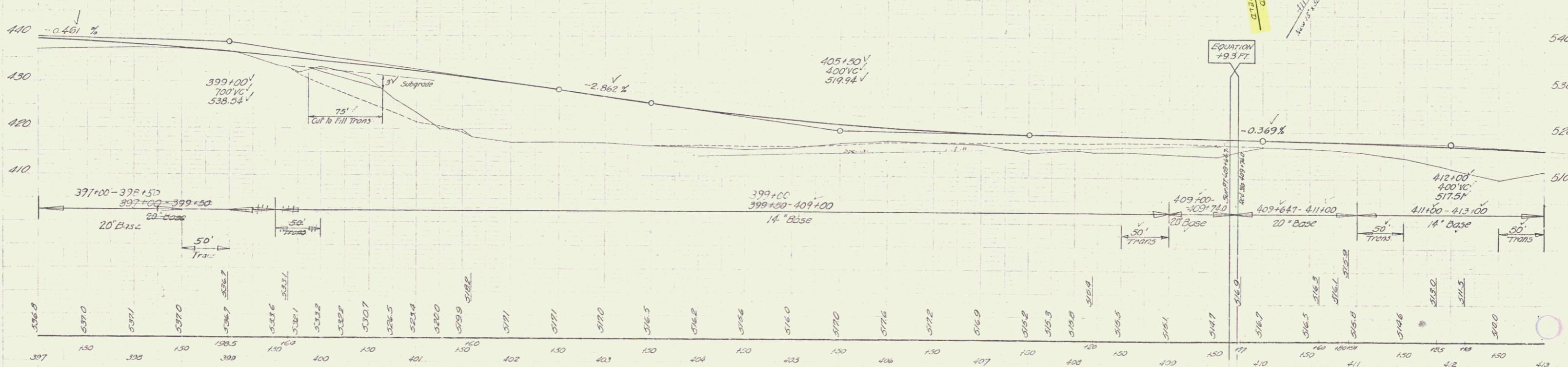
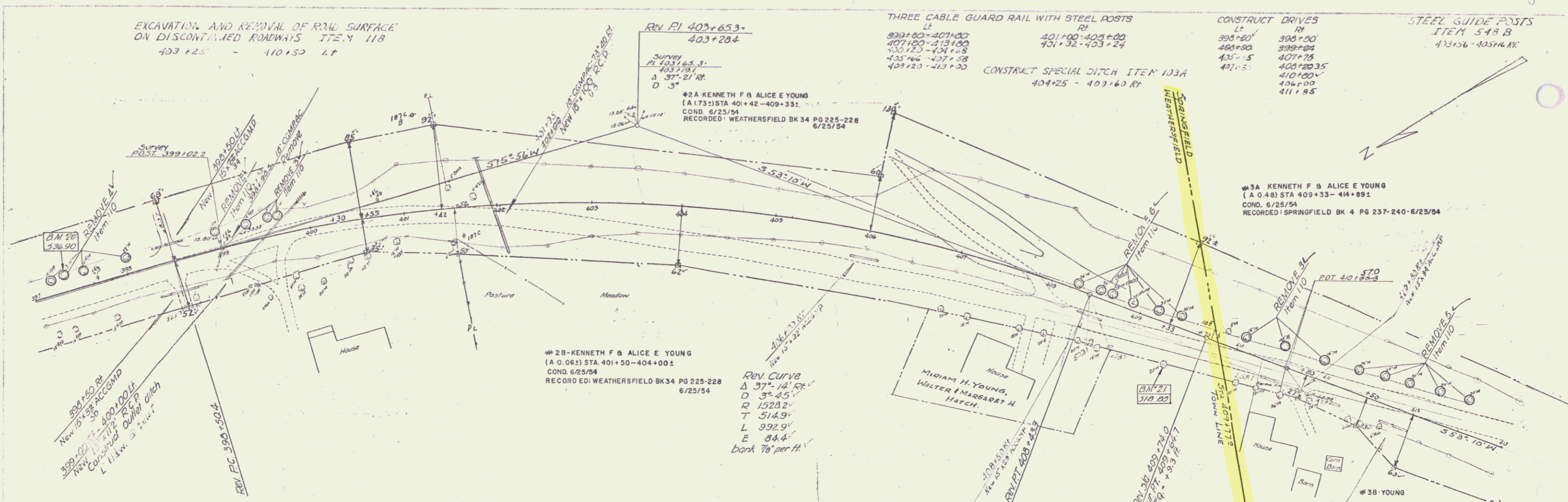
CONSTRUCT DRIVES  
 Lt Rt  
 387+80 387+85  
 386+18 387+80



PLAN  
 DATE: 6/25/54  
 BY: FLOYD C. EASTMAN  
 CHECKED: [Signature]  
 APPROVED: [Signature]

Profile  
 DATE: 6/25/54  
 BY: FLOYD C. EASTMAN  
 CHECKED: [Signature]  
 APPROVED: [Signature]

Scale in feet of 1" = 40' Horiz. 1" = 4' Vert. ELEV. 538.29  
 TBM Spikes in Pole # 33 at Sta 397+25 Lt Elev. 539.54  
 TBM Spikes in Pole # 14 at Sta 397+25 Lt Elev. 538.29  
 WEATHERFIELD - SPRINGFIELD PROJECT # 18-64(3) SHEET 6 OF 63



B.M. \*20 Spike in Root of 18" Maple 167' 1" of Sta. 307+34 Elev. 536.90  
 B.M. \*21 Spike in Root of 32" Maple 39' 5" R. of Sta. 409+31 Elev. 519.11  
 T.B.M. Spike in Bank of 6" Maple 112' 2" of Sta. 402+57 Elev. 517.13

WEATHERSFIELD - SPRINGFIELD  
 PROJECT No. G-1 (3)  
 SHEET 10 OF 65

PLANK GUARD RAIL WITH PAINT  
418+00 LT - 25 FT

STEEL GUIDE POSTS  
ITEM 543 B  
415+30 - 416+25 LT  
416+73 - 417+68 LT  
423+00 (7) LT  
421+30 - 422+64 RT

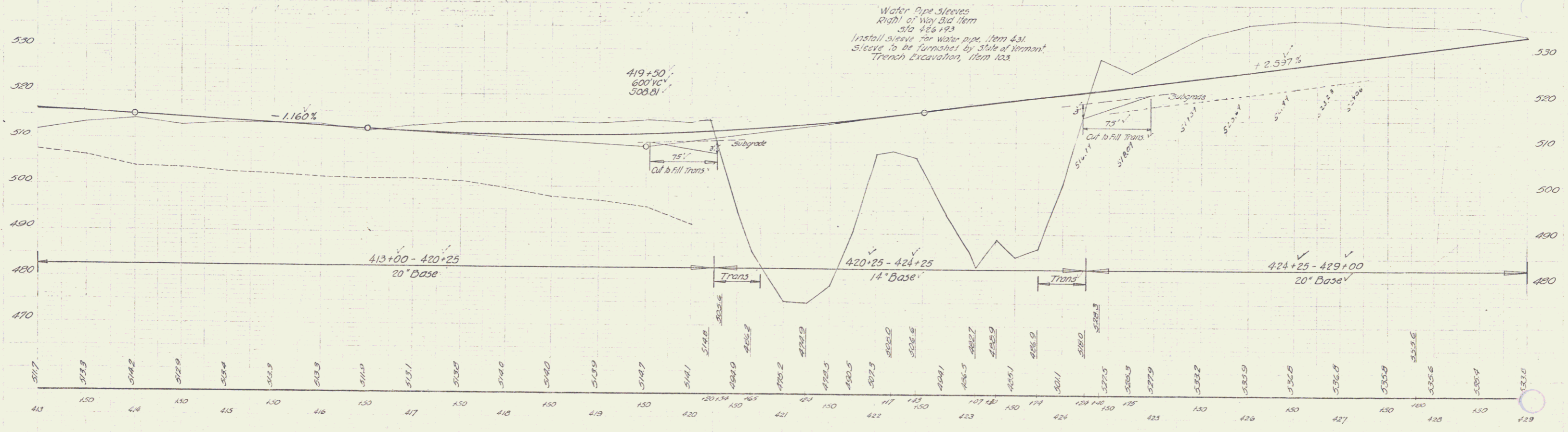
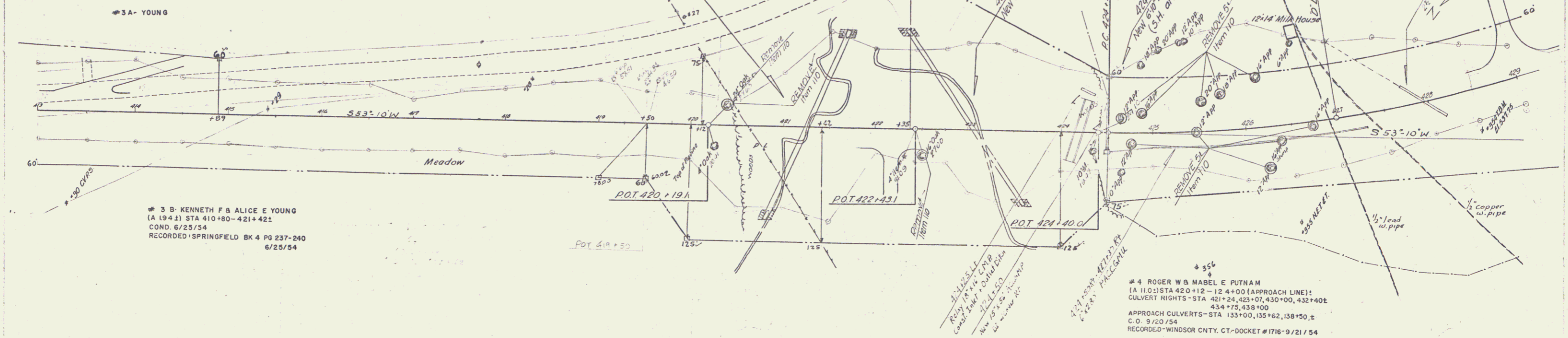
THREE CABLE GUARD RAIL WITH STEEL POSTS  
413+00 - 413+55  
420+10 - 420+08  
422+10 - 424+12  
422+80 - 424+24

EXCAVATION AND REMOVAL OF ROAD SURFACE  
ON DISCONTINUED ROADWAYS - ITEM 118  
416+00 RT - 430+00 LT  
418+50 LT

Construct Drive  
422+12 RT  
429+00 LT

Construct Turnout  
411+423+00 RT

ROGER W & MABEL E PUTNAM



T.B.M. Spike in Stump 75' RT. of Sta 413+25 Elev. 510.7 TBM Spike on E. End of Conn. Ldw. of 6"x4" R.Box 175' RT. of Sta 422+00 Elev. 497.7 TBM Spike in Box of 30" Elm 68' RT. of Sta 424+50 Elev. 530.6

WEATHERFIELD - SPRINGFIELD  
PROJECT # 16 GA (3)  
Sheet 11 of 65



