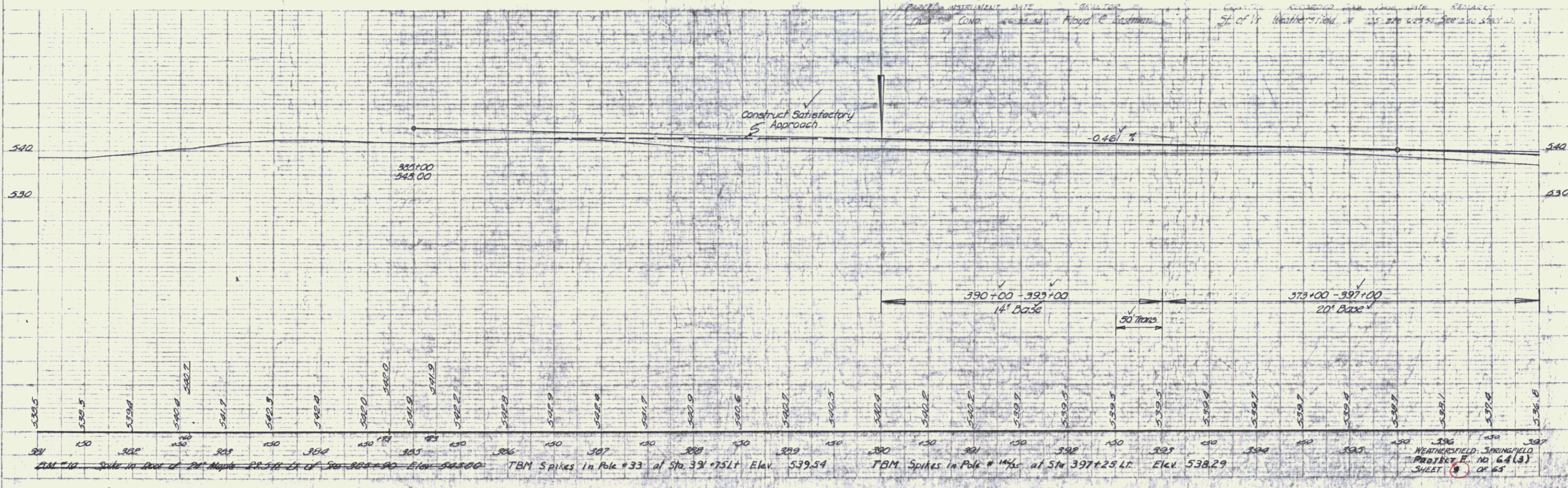
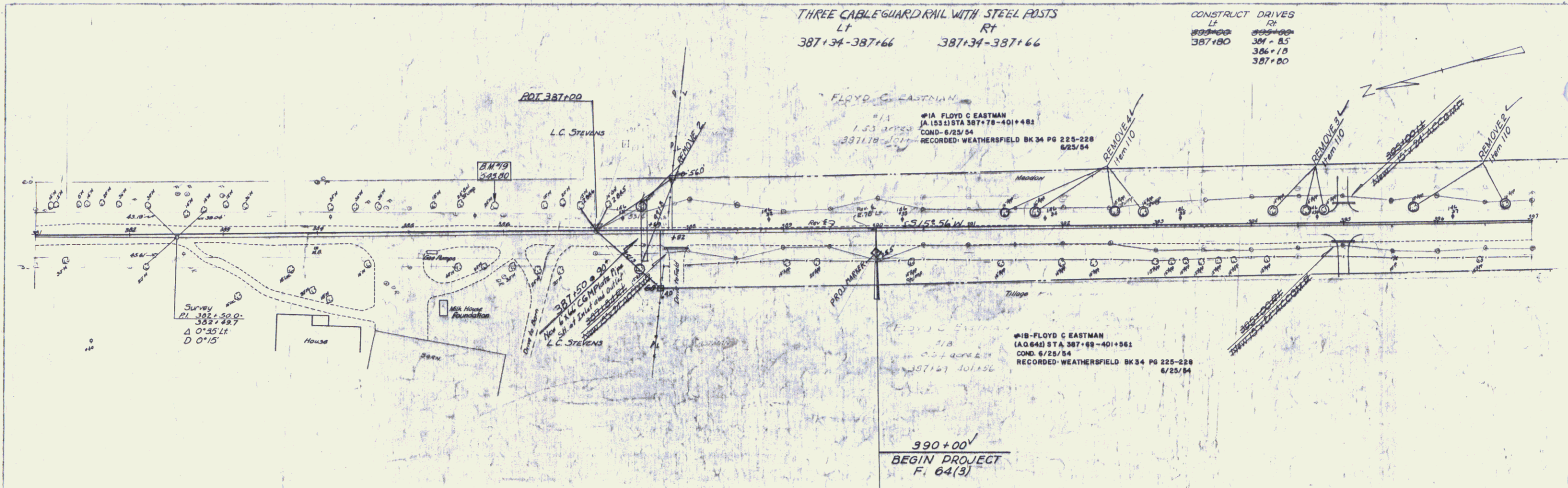


THREE CABLE GUARD RAIL WITH STEEL POSTS
 Lt Rt
 387+34-387+66 387+34-387+66

CONSTRUCT DRIVES
 Lt Rt
 387+80 387+85
 386+18 387+80



PLAN
 DATE: 6/25/54
 BY: FLOYD C. EASTMAN
 CHECKED: [Signature]
 APPROVED: [Signature]

Profile
 DATE: 6/25/54
 BY: FLOYD C. EASTMAN
 CHECKED: [Signature]
 APPROVED: [Signature]