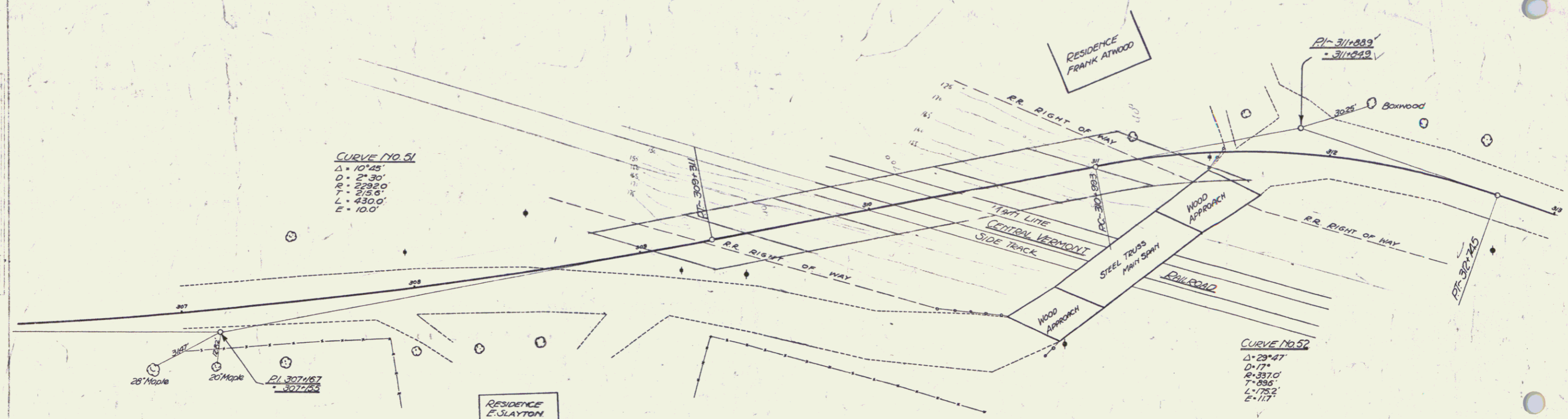


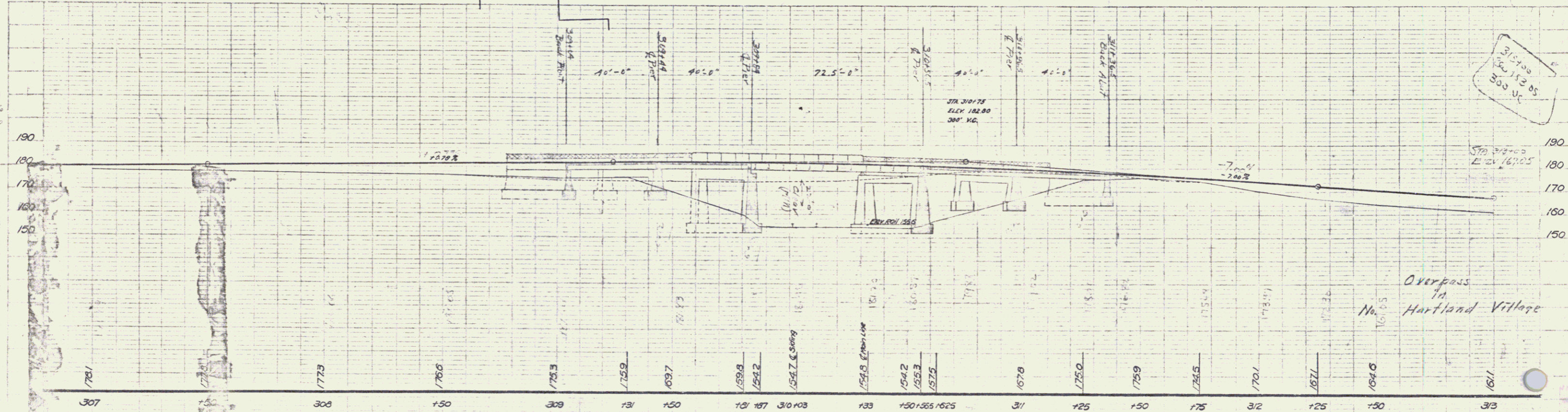
PLAN  
 CENTRAL VERMONT  
 RAILROAD  
 DIST. # 4 PLANS

**CURVE NO. 51**  
 $\Delta = 10^{\circ}45'$   
 $D = 2^{\circ}30'$   
 $R = 232.0'$   
 $T = 215.6'$   
 $L = 430.0'$   
 $E = 10.0'$

**CURVE NO. 52**  
 $\Delta = 23^{\circ}47'$   
 $D = 17'$   
 $R = 337.0'$   
 $T = 355'$   
 $L = 175.2'$   
 $E = 117'$



Sta 306+60  
 Elev 179.50  
 300' V.C.



315+00  
 Elev 150.05  
 300' V.C.

Sta 310+00  
 Elev 167.05

Overpass  
 in  
 Hartland Village  
 No. 16705

SHEET 3A

DIST. # 4 PLANS.