

CABLE GUARD RAIL REQUIRED

Sta. to	Sta. Left	Right
416+00	417+60	167
417+12	417+60	48
419+44	423+00	356
419+17	419+60	43

DETM. CONC. PIPE CULVERTS REQUIRED

Sta.	Dist. Long	Conc. A	Conc. B	Conc. C
420+00	15'	EDR	14cy	12cy 116#

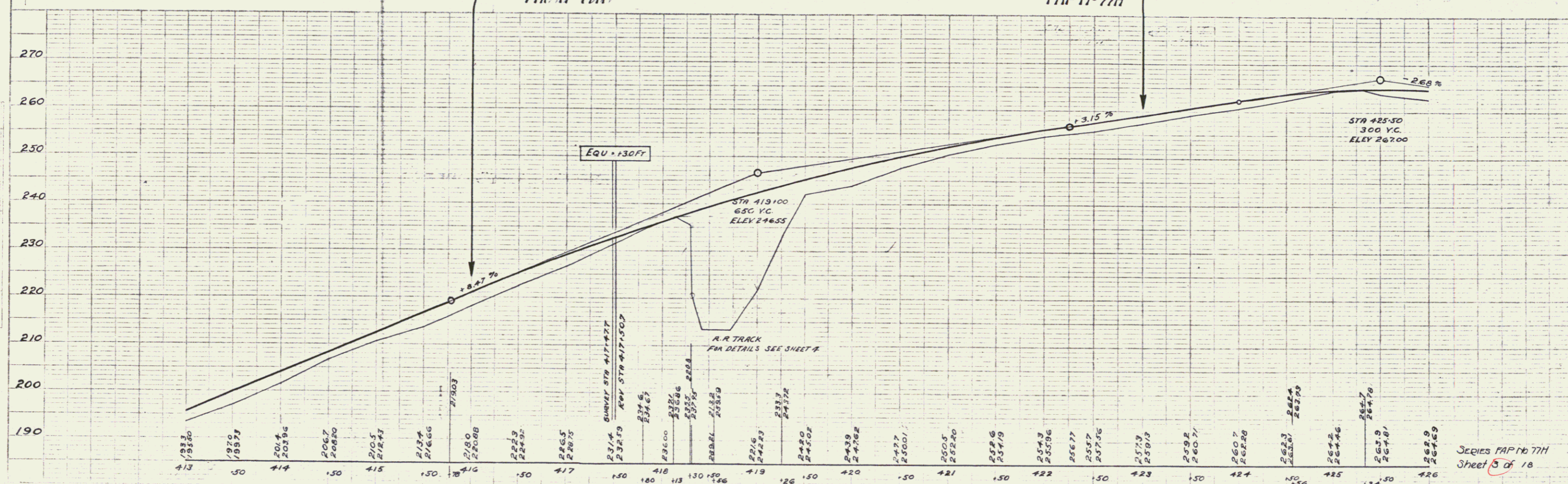
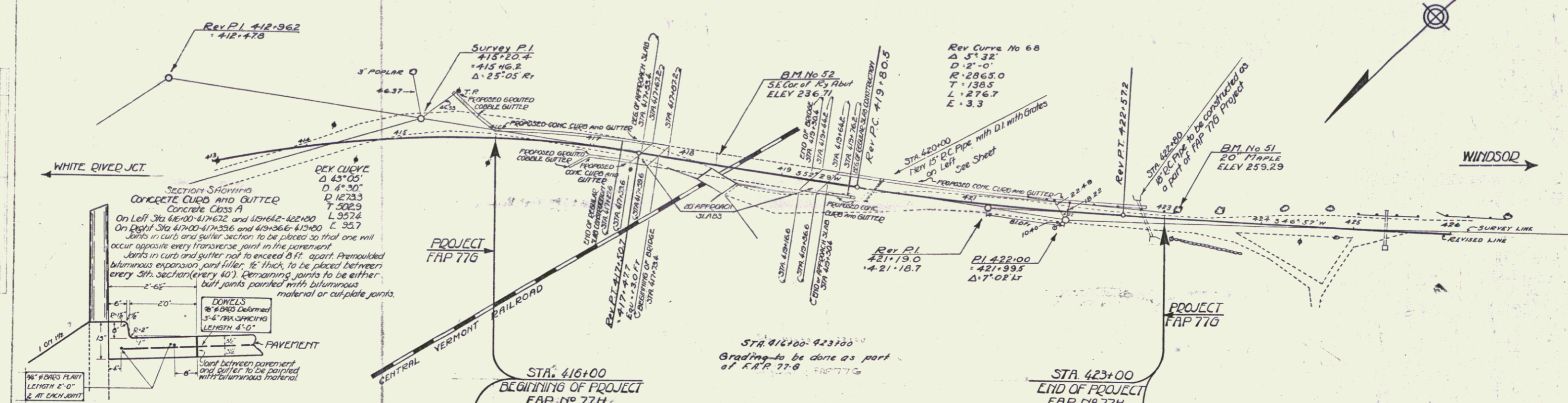
CONC. CURB AND GUTTER REQUIRED

Sta. to	Sta.	Left	Right	Conc. A	Conc. B	Conc. C
416+00	417+60	167	167	1356	1344"	
417+12	417+60	48	48	1356		
419+44	423+00	356	356	1356		
419+17	419+60	43	43	1356		

GRADED COBBLE GUTTER REQUIRED

Sta.	Left	Right	Area
416+00	167	167	27 sq. yd.
417+12	48	48	11 sq. yd.
419+44	356	356	
419+17	43	43	

STATE ROAD 77H TOTAL SHEET TOTAL  
VI. 77H 1930 3 18



BM No 52 S.E. Cor of Ry Abut Elev 236.71  
BM No 51 Spike in trunk of 20" Maple 6 Ft Left of Sta. 423+11 Elev 259.29

Series FAP No 77H  
Sheet 5 of 18