

INDEX OF SHEETS

SHEET NO. 1 TITLE PAGE

2 TYPICAL CROSS-SECTION OF IMPROVEMENT (ONE COURSE CEMENT CONCRETE PAVEMENT)

3 TYPICAL CROSS-SECTION OF IMPROVEMENT (MACADAM)

4 TYPICAL CROSS-SECTION OF IMPROVEMENT (MACADAM)

5-21 PLAN AND PROFILE SHEETS STA 304+00 TO STA 623+46.7

21 STANDARD STRUCTURE SHEET - 3-20 PIPE CULVERTS

23 STANDARD STRUCTURE SHEET - 3-21 BOX CULVERTS

25 STANDARD STRUCTURE SHEET - 3-22 GUARDRAIL, ETC.

30 STANDARD CULVERT SHEET - 3-6-1 CULVERTS 5-Ft SPAN AND OVER

31-61 CROSS SECTION SHEETS

FED. ROAD DIST. NO.	STATE	FED. AID PROJECT NO.	FISCAL YEAR	SHEET NO.	TOTAL SHEETS
9	VT.	77-G	1930	1	67

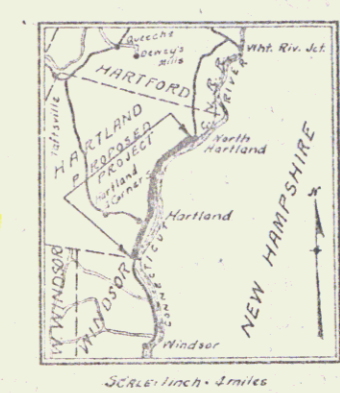
STATE OF VERMONT
STATE HIGHWAY DEPARTMENT

PLAN AND PROFILE OF PROPOSED
STATE HIGHWAY

FEDERAL AID PROJECT

TOWN OF HARTLAND
CONNECTICUT RIVER ROAD

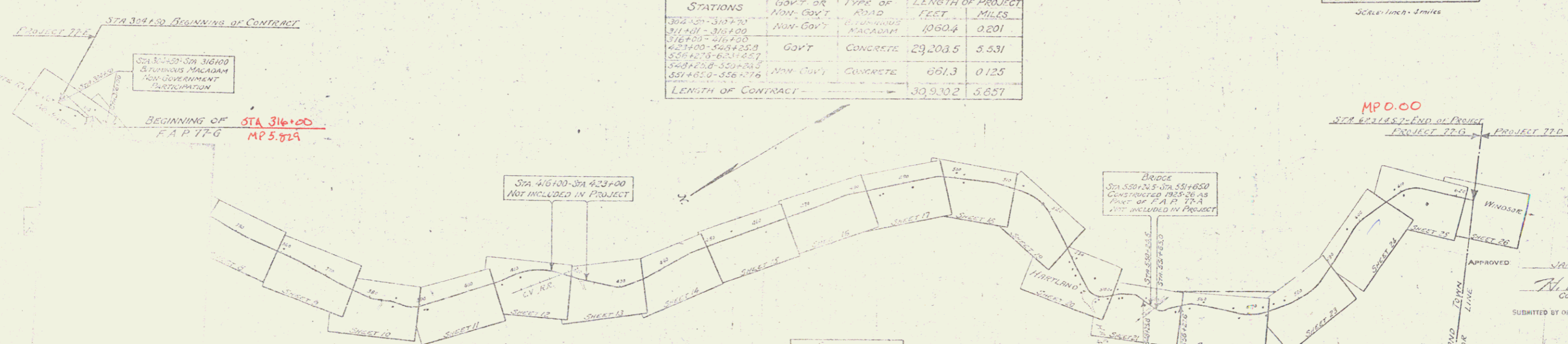
Route: **US 5**
Project: **F 77 G**
Pin# **9912326**



FROM
THE END OF PROJECT 77E IN NORTH HARTLAND VILLAGE
SOUTH 5.857 MILES TO THE HARTLAND-WINDSOR TOWN LINE

STATIONS	GOVT. OR NON-GOVT.	TYPE OF ROAD	LENGTH OF PROJECT FEET	MILES
304+00-317+00	NON-GOVT.	6 LANE ROAD	1060.4	0.201
317+00-318+00	NON-GOVT.	MACADAM		
318+00-417+00	GOVT.	CONCRETE	29,203.5	5.531
417+00-448+25.8	NON-GOVT.	CONCRETE	31,255.8	0.585
448+25.8-551+00	NON-GOVT.	CONCRETE	102,744.2	1.900
551+00-556+77.6	NON-GOVT.	CONCRETE	5,577.6	0.105
LENGTH OF CONTRACT			30,930.2	5.657

(To be Returned to R.O.W., Division)
Town of **US 5**
PERPETUAL
TOWN FILE
RIGHT-OF-WAY DIVISION



CONVENTIONAL SIGNS

- RAILROAD
- RETAINING WALL
- CENTER LINE
- SURVEY LINE
- CULVERT
- DROP INLET
- TROLLEY POLE
- SPRINKLER POLE
- TELEPHONE POLE
- TRUSS
- BRIDGE

- CURVE DATA
- DEFLECTION ANGLE
 - DEGREE OF CURVE
 - RADIUS OF CURVE
 - TANGENT DISTANCE
 - LENGTH OF CURVE
 - EXTERNAL DISTANCE
 - POINT OF INTERSECTION
 - POINT OF CURVE
 - POINT OF TANGENT
 - POINT OF TANGENT

SCALES
Plan: 1" = 100'
Profile: 1" = 20'
Profile: Vert. 1" = 10'
Sections: 1" = 5'

This project to be constructed in accordance with Standard Road and Bridge Specifications for 1930.
These plans are subject to such revisions as may be required by the Bureau of Public Roads, or the Chief Engineer.

APPROVED JAN 21 1930
W. E. ...
COMMISSIONER OF HIGHWAYS
SUBMITTED BY ORDER OF THE STATE HIGHWAY BOARD

RECOMMENDED
RECOMMENDED FOR APPROVAL
APPROVED

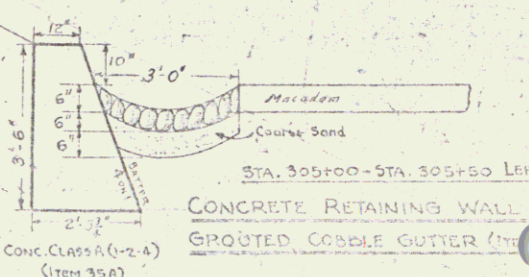
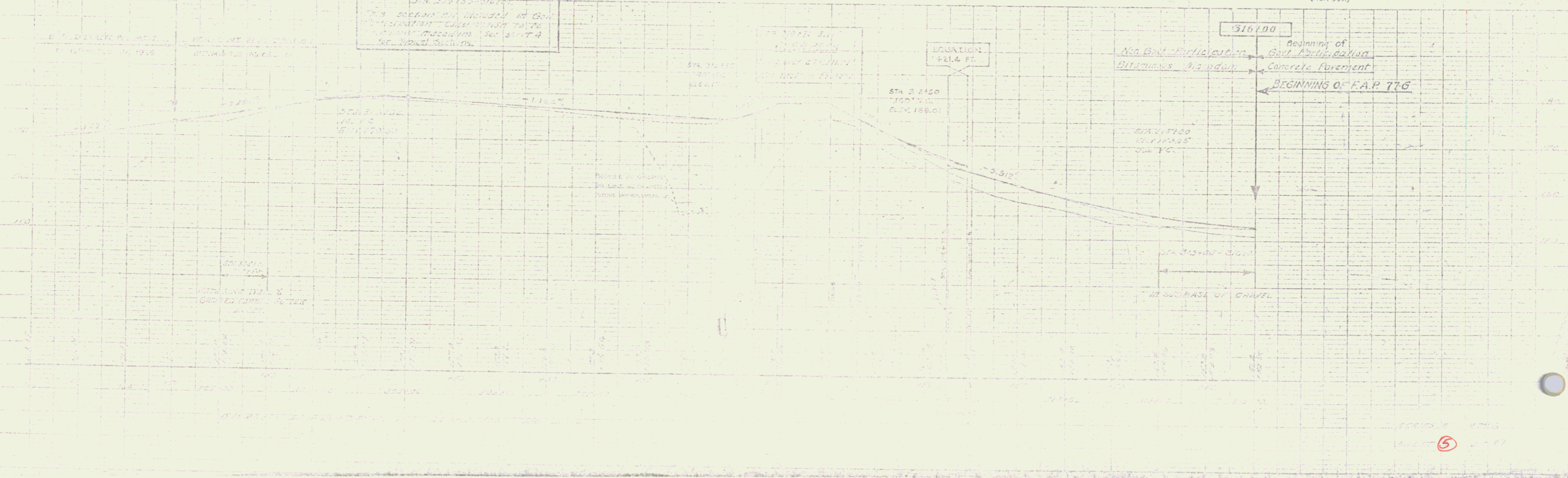
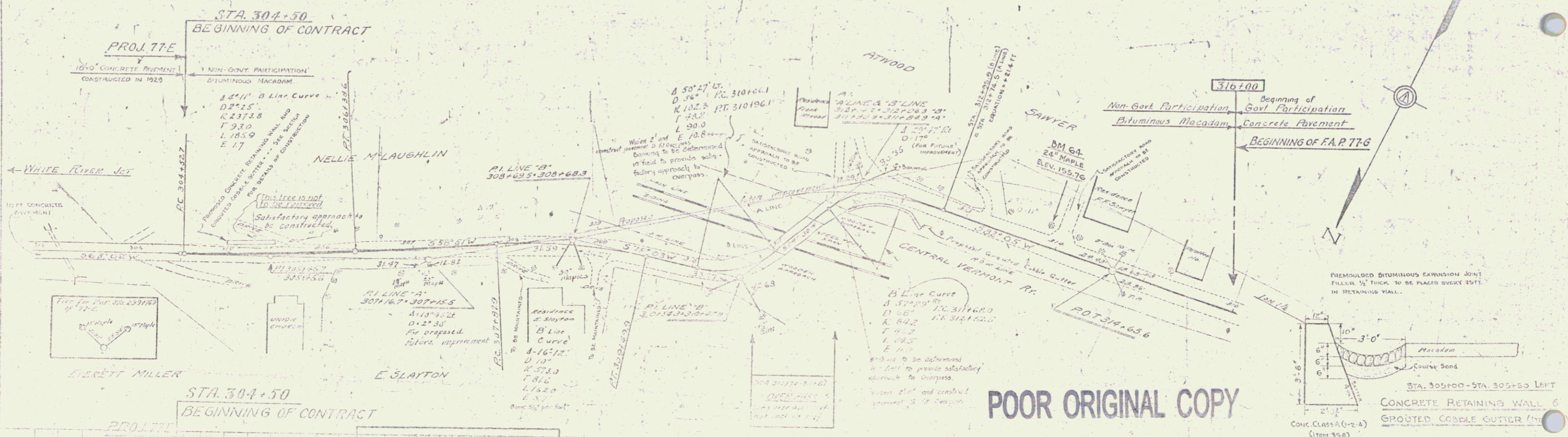
PLANS COMPLETED JAN 21 1930
SERIES F. NO 77-G FILED
SHEET 1 OF 67

US 5

Station	Left	Right
311+81	312+33	72.52
312+40	313+10	64.22
313+28	313+92	

STATIONS	CONC. B	GUTTER WIDTH	GUTTER AREA
305+00-307+50	15.00	3'-0"	17.24 sq. ft.

Station	Gutter Width	Gutter Area
311+81-312+61	3'-0"	11.97 sq. ft.



POOR ORIGINAL COPY

1.000' SLOPE REQUIRED
 5.82° 05' W
 3.9444

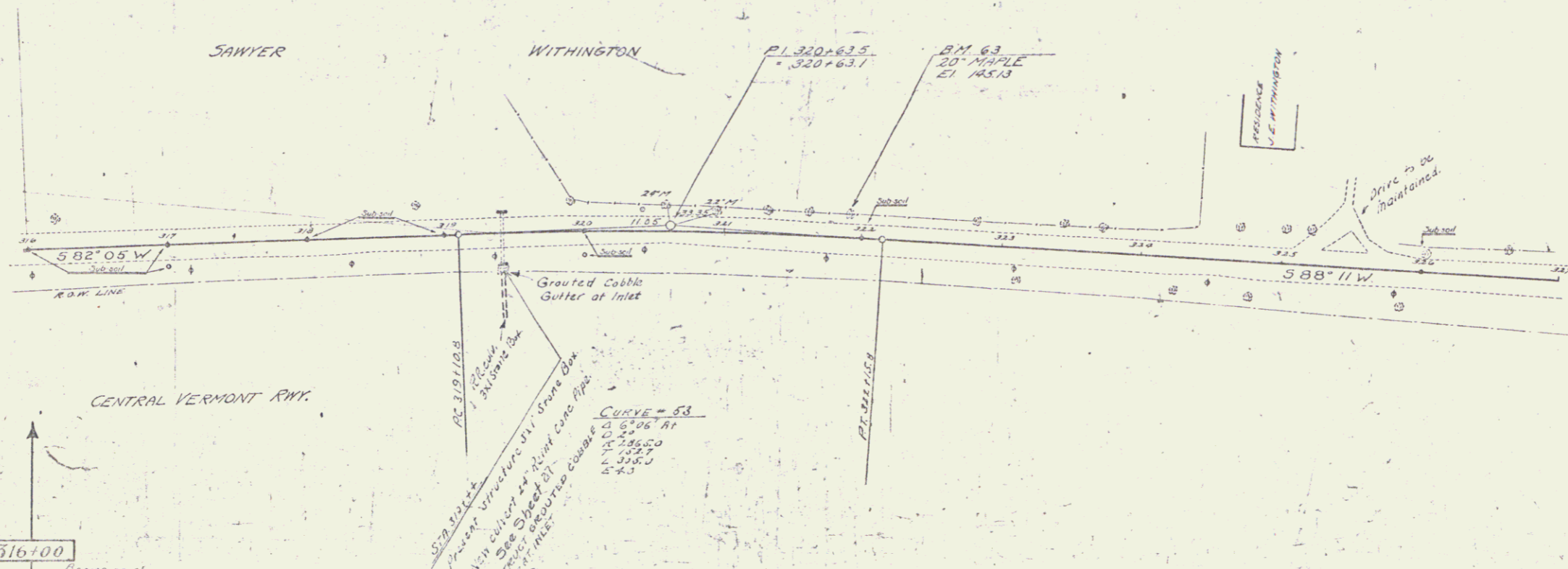
NEW RAIN PIPE CONCRETE REQUIRED
 Section 20' 30" 4.00' 33°

GRADED CABLE GUIDE STRUCK
 41' incl. of center, STA 31014.20 3444

77 0 130 C 67

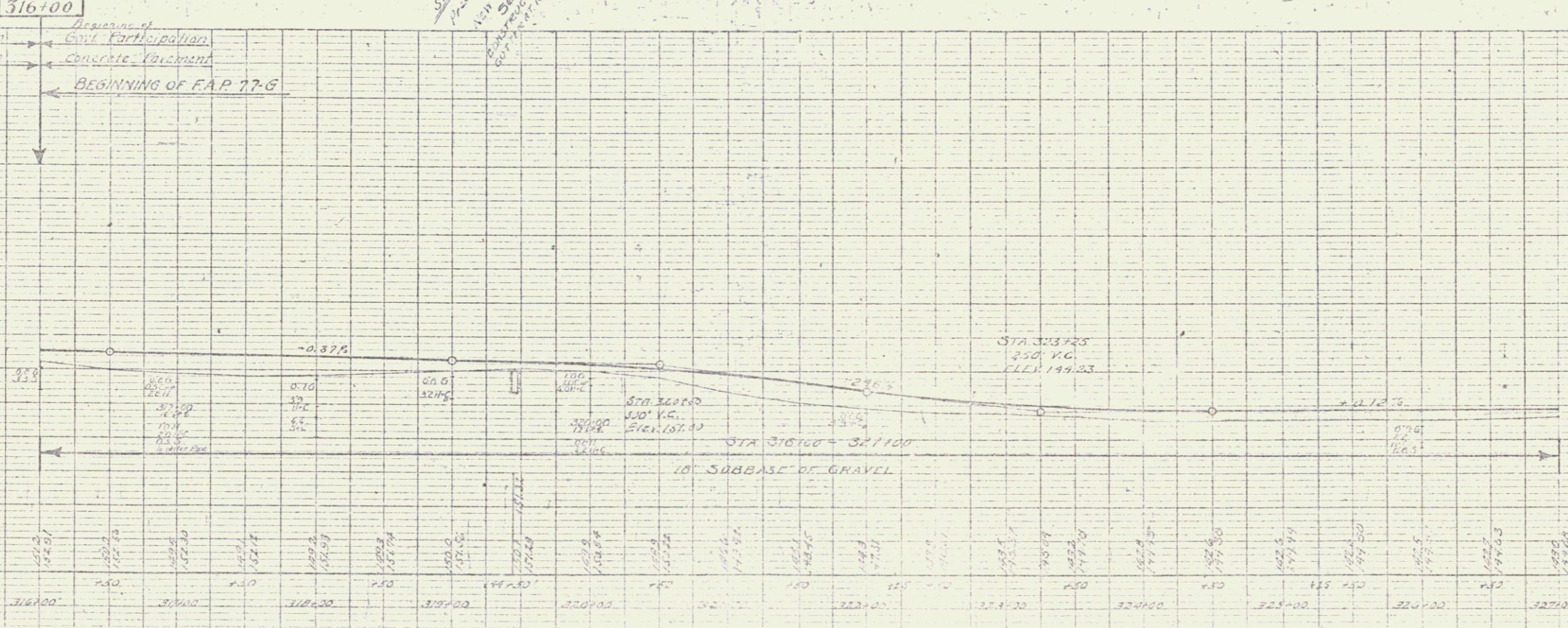
POOR ORIGINAL COPY

PLAN
 SHEET NO. 10
 DATE 10/1/53



SUB-SOIL CLASSIFICATION
 CLAY S
 SAND S
 SILT ST
 CLAY C
 QUICKSAND Q
 LEDGE L

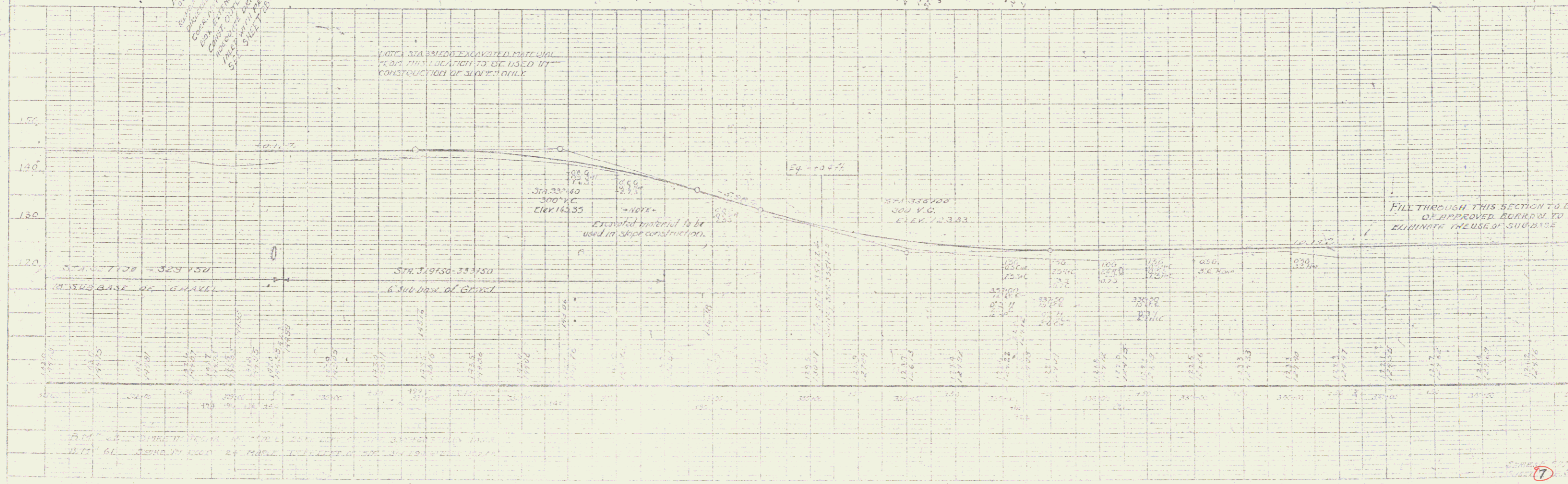
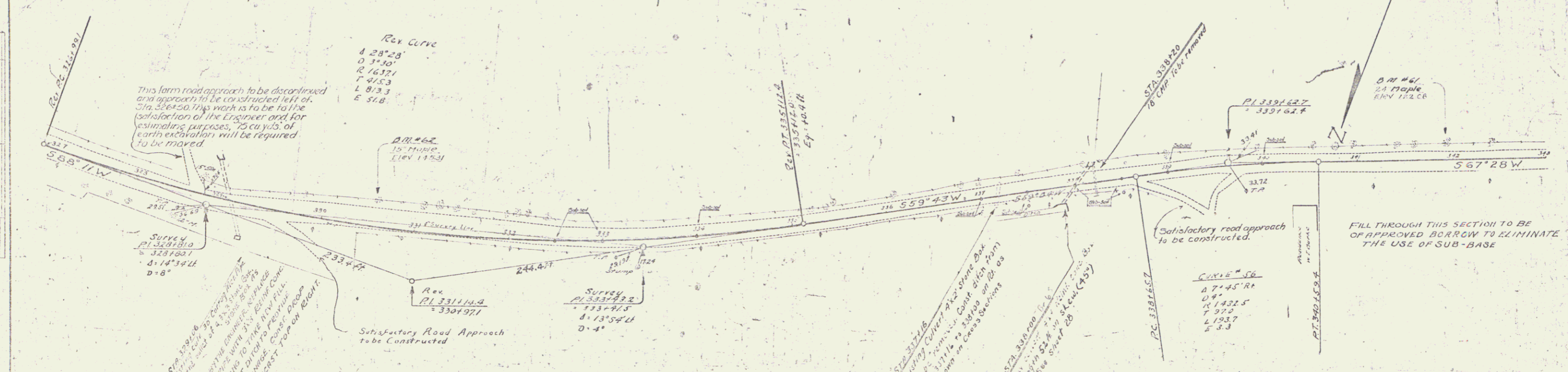
LEGEND
 DRY D
 MUD M
 FINE F
 GRAVEL G
 HARD H
 SOFT S
 SAND S
 SILT ST
 CLAY C
 QUICKSAND Q
 LEDGE L



SHEET 6 OF 6

POOR ORIGINAL COPY

WOOD GUARD RAIL REQUIRED		SABLE GUARD RAIL REQUIRED		NEW HEAVY CONC. BOX CULVERTS REQUIRED			
Station	Len. Feet	Station	Len. Feet	Station	Size	Comp. Steel	DI. Pipe Collar
320146	24 ft.	320180-320128	48 ft.	320100	4'x4'	29.754	1978"
320150	24 ft.	320176-320180	144 ft.	320106	3'x3'	10.7	754"
		328100	48 ft.				



PLAN	320100	320150	320200	320250	320300	320350	320400	320450	320500	320550	320600	320650	320700	320750	320800	320850	320900	320950	321000	321050	321100	321150	321200	321250	321300	321350	321400	321450	321500	321550	321600	321650	321700	321750	321800	321850	321900	321950	322000	322050	322100	322150	322200	322250	322300	322350	322400	322450	322500	322550	322600	322650	322700	322750	322800	322850	322900	322950	323000	323050	323100	323150	323200	323250	323300	323350	323400	323450	323500	323550	323600	323650	323700	323750	323800	323850	323900	323950	324000	324050	324100	324150	324200	324250	324300	324350	324400	324450	324500	324550	324600	324650	324700	324750	324800	324850	324900	324950	325000	325050	325100	325150	325200	325250	325300	325350	325400	325450	325500	325550	325600	325650	325700	325750	325800	325850	325900	325950	326000	326050	326100	326150	326200	326250	326300	326350	326400	326450	326500	326550	326600	326650	326700	326750	326800	326850	326900	326950	327000	327050	327100	327150	327200	327250	327300	327350	327400	327450	327500	327550	327600	327650	327700	327750	327800	327850	327900	327950	328000
------	--------	--------	--------	--------	--------	--------	--------	--------	--------	--------	--------	--------	--------	--------	--------	--------	--------	--------	--------	--------	--------	--------	--------	--------	--------	--------	--------	--------	--------	--------	--------	--------	--------	--------	--------	--------	--------	--------	--------	--------	--------	--------	--------	--------	--------	--------	--------	--------	--------	--------	--------	--------	--------	--------	--------	--------	--------	--------	--------	--------	--------	--------	--------	--------	--------	--------	--------	--------	--------	--------	--------	--------	--------	--------	--------	--------	--------	--------	--------	--------	--------	--------	--------	--------	--------	--------	--------	--------	--------	--------	--------	--------	--------	--------	--------	--------	--------	--------	--------	--------	--------	--------	--------	--------	--------	--------	--------	--------	--------	--------	--------	--------	--------	--------	--------	--------	--------	--------	--------	--------	--------	--------	--------	--------	--------	--------	--------	--------	--------	--------	--------	--------	--------	--------	--------	--------	--------	--------	--------	--------	--------	--------	--------	--------	--------	--------	--------	--------	--------	--------	--------	--------	--------	--------	--------	--------	--------	--------	--------

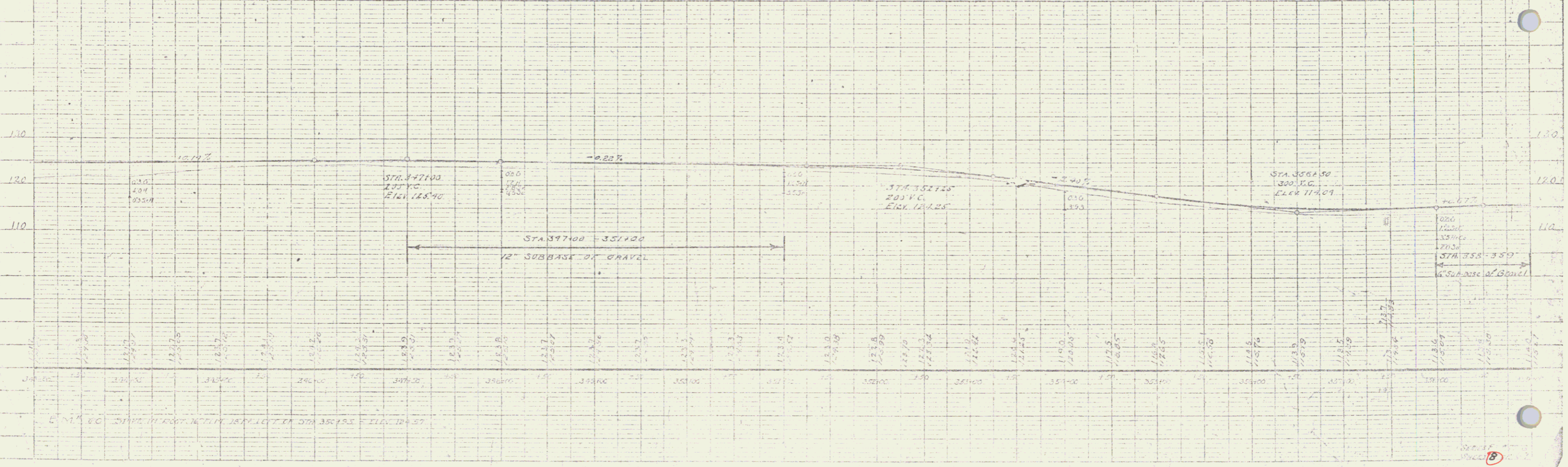
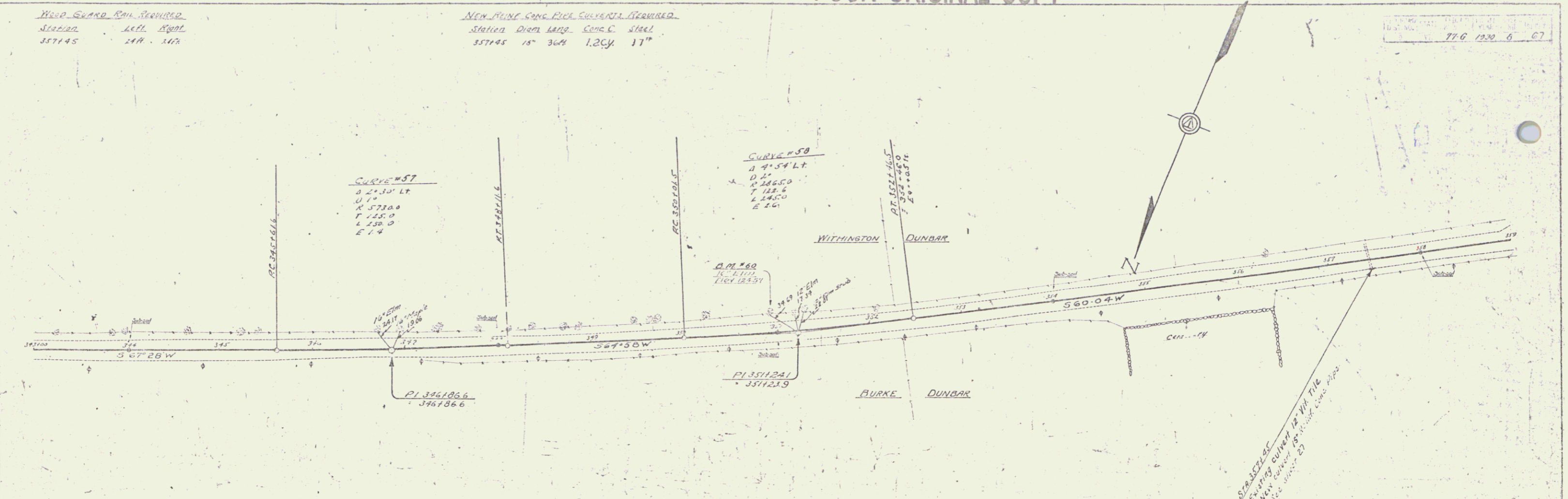
POOR ORIGINAL COPY

Wood Spruce Run, Reformed.
Station 24th. Road.
357145 14th. 147.

New Point Conc. Pipe Subverts. Reformed.
Station 24th. Road. Conc. Steel.
357145 15' 36" 1.2cy. 17"

77-6 1230 6 67

DATE	1967
BY	W. J. BROWN
CHECKED BY	W. J. BROWN
SCALE	AS SHOWN
PROJECT	WOOD SPRUCE RUN
SHEET NO.	15
TOTAL SHEETS	15



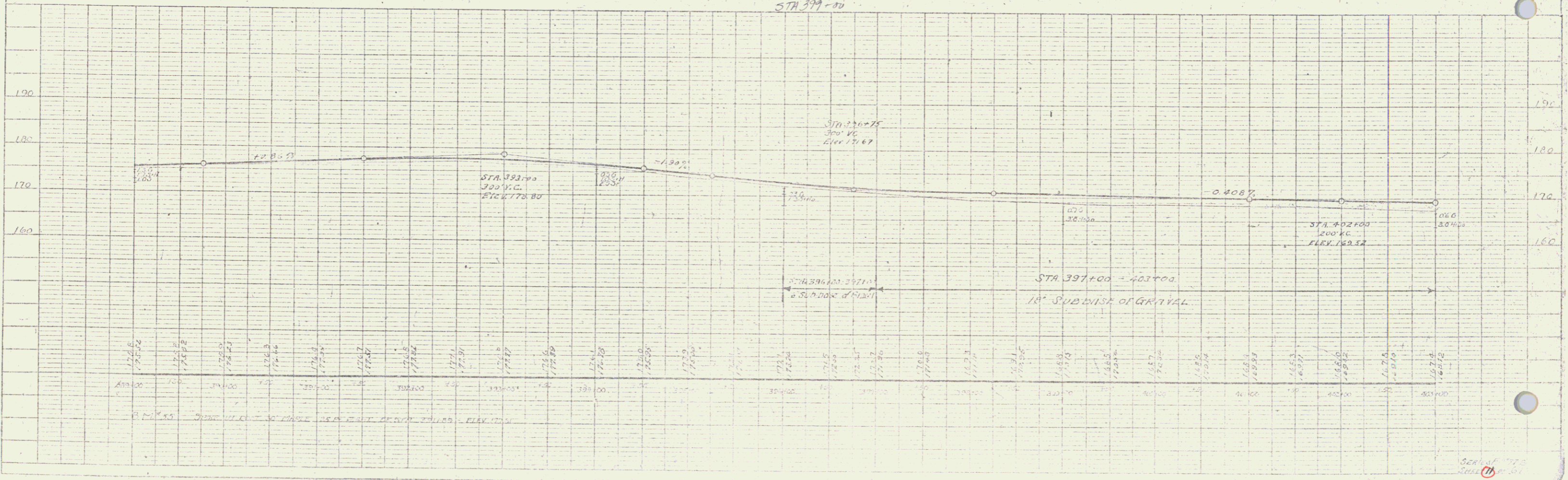
POOR ORIGINAL COPY

77-0 1980 11 67

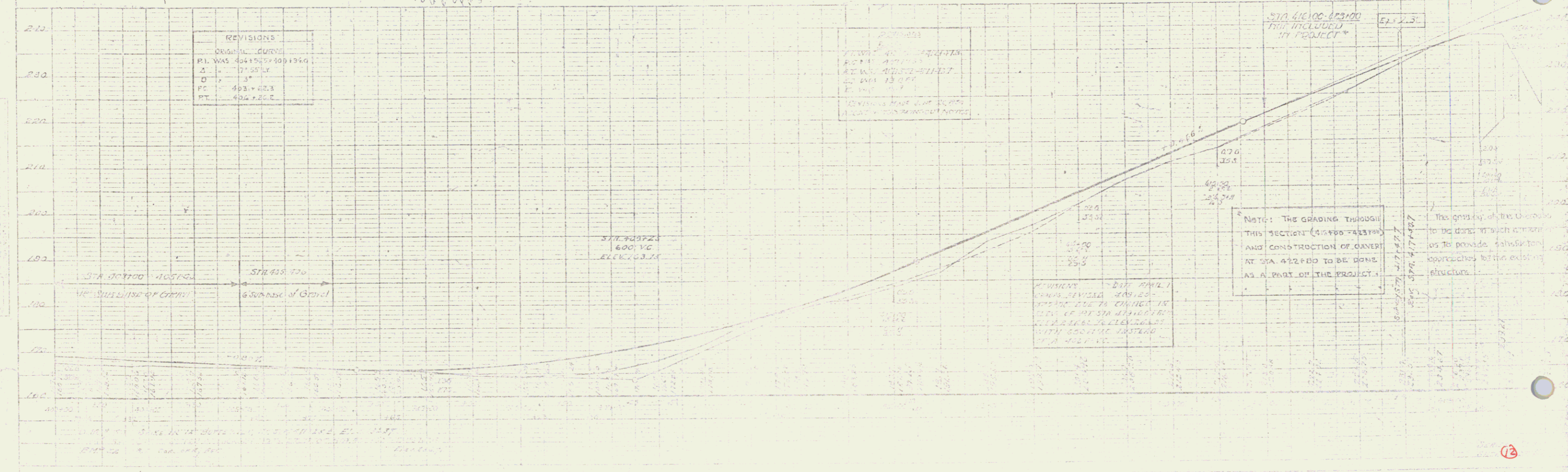
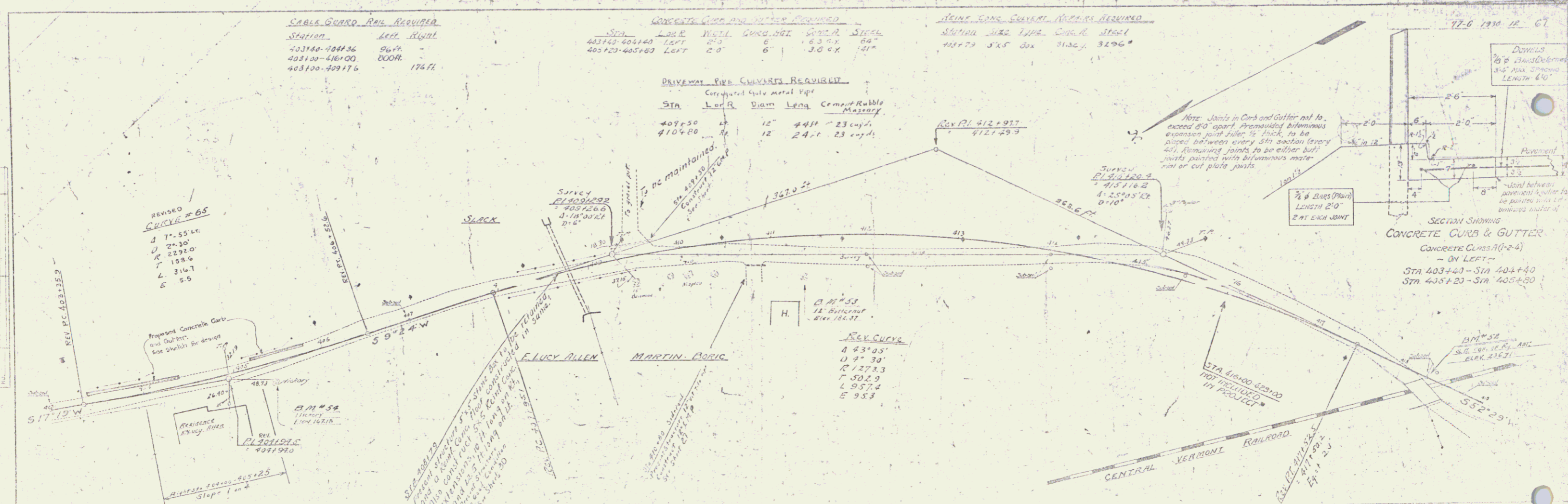
P.M. No. _____
 DATE _____
 PROJECT _____
 SHEET NO. _____
 OF _____
 DRAWN BY _____
 CHECKED BY _____
 DATE _____



WDOE SLACK TO SOV 10/1/1956 BK 40 Pg 349
 STA 399+00

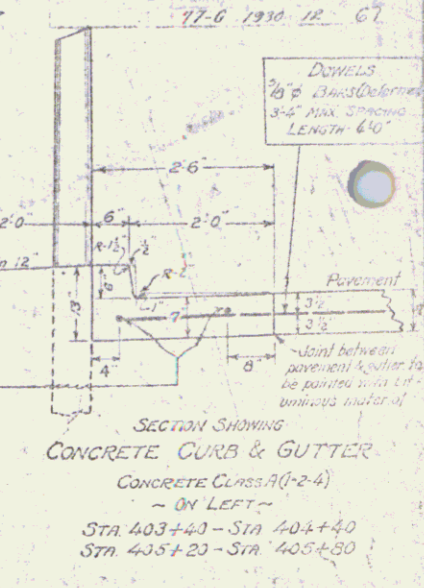


POOR ORIGINAL COPY



REVISIONS	
ORIGINAL CURVE	
PI WAS 404150-400136	
Δ = 7° 55' L	
D = 2430'	
K = 2292.0	
T = 158.6	
L = 316.7	
E = 5.6	

NOTE: THE GRADING THROUGH THIS SECTION (40300-40350) AND CONSTRUCTION OF GANTRY AT STA. 412+80 TO BE DONE AS A PART OF THE PROJECT.



SECTION SHOWING CONCRETE CURB & GUTTER - ON LEFT - STA 403+40 - STA 404+40 STA 403+20 - STA 404+20

POOR ORIGINAL COPY

71.6 12.30 14 67

3000 GUARD RAIL REQUIRED

STATION	LOFT	RIGHT
438+95	24H	24H
447+50	24H	24H
454+27	24H	24H

NON REINFORCED PAV. CURBS REQUIRED

Station	Dist.	Wdg.	Size C.	Steel
434+27	15'	36H	12CY	17"
438+95	18'	36H	10CY	33"
447+50	18'	40H	10CY	33"

PLAN	DATE	BY
REVISED		
DATE		
BY		



PROFILE	DATE	BY
REVISED		
DATE		
BY		



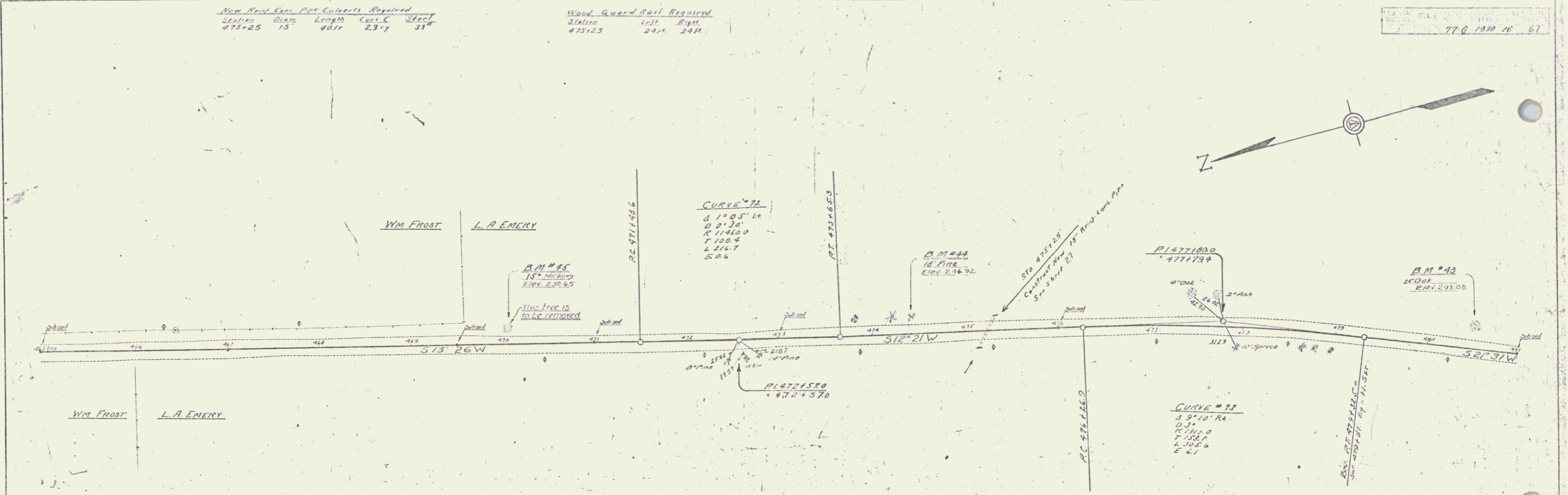
POOR ORIGINAL COPY

77-0 1310 16 61

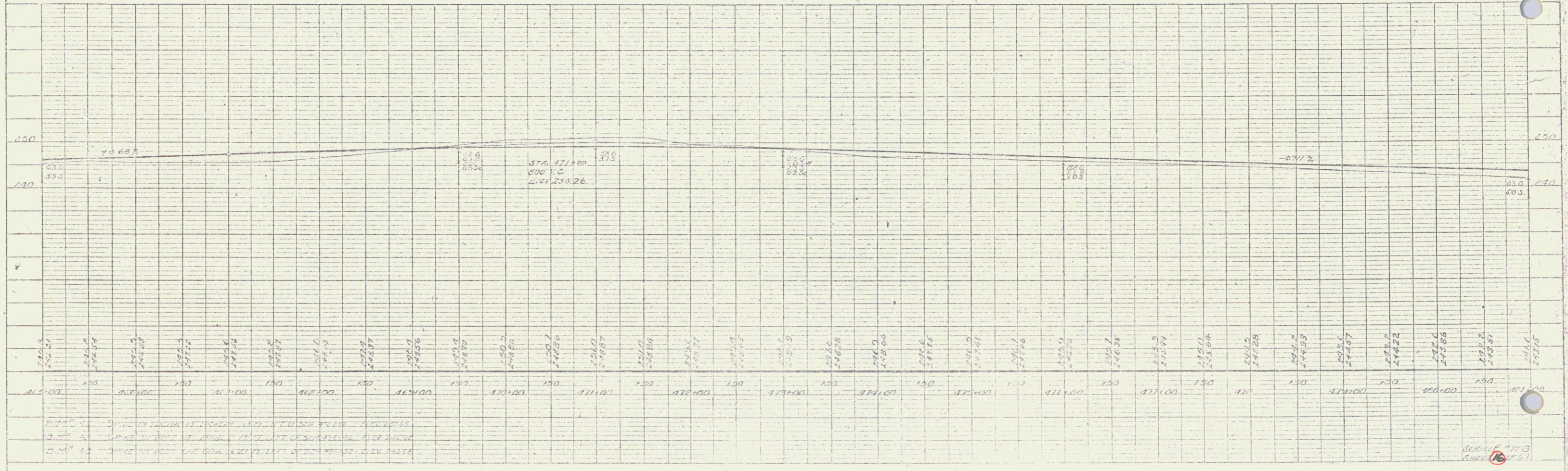
New Rail Cars PWS Culverts Required
 Station Diam Length Cont. C. Steel
 475+25 15 40 ft 2.3' 33"

Wood Guard Rail Required
 Station 121 Right
 475+25 24 ft 24 ft

PLAN
 DATE 10/25/1916
 DRAWN BY J. H. WILSON
 CHECKED BY J. H. WILSON
 IN CHARGE J. H. WILSON



PROFILE
 DATE 10/25/1916
 DRAWN BY J. H. WILSON
 CHECKED BY J. H. WILSON
 IN CHARGE J. H. WILSON



NOTE: 1. GRADE ON TRACK IS PROBABLY 1.5% TO 2.0% BELOW TRACK BED.
 2. GRADE ON TRACK IS PROBABLY 0.5% TO 1.0% BELOW TRACK BED.
 3. GRADE ON TRACK IS PROBABLY 0.5% TO 1.0% BELOW TRACK BED.

SCALE: 1" = 100'

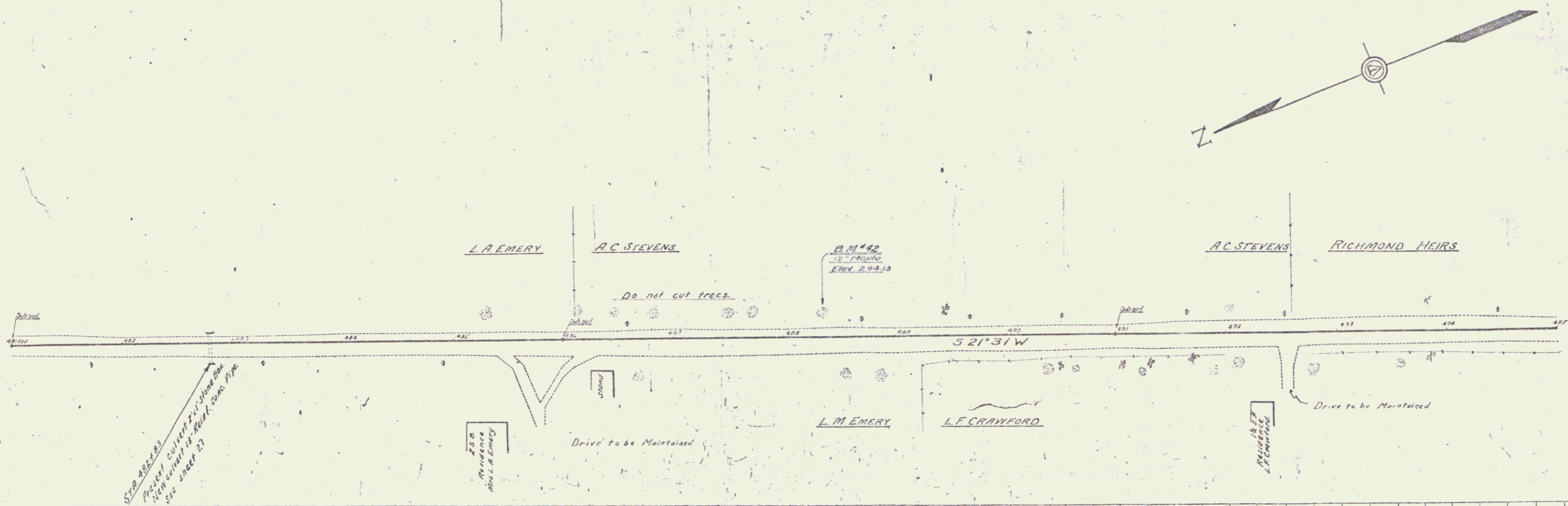
POOR ORIGINAL COPY

WOOD GUARD RAIL REVISIONS
 Station 481+00 481+40
 481+80 481+20

NEW GRADE AND CURB SERVICE BEYOND
 Station Point 482+00 482+40
 482+80 483+20

77-G 1930 17 67

PLAN	DATE	BY
REVISION		
1		
2		
3		
4		
5		
6		
7		
8		
9		
10		



PROFILE	DATE	BY
REVISION		
1		
2		
3		
4		
5		
6		
7		
8		
9		
10		

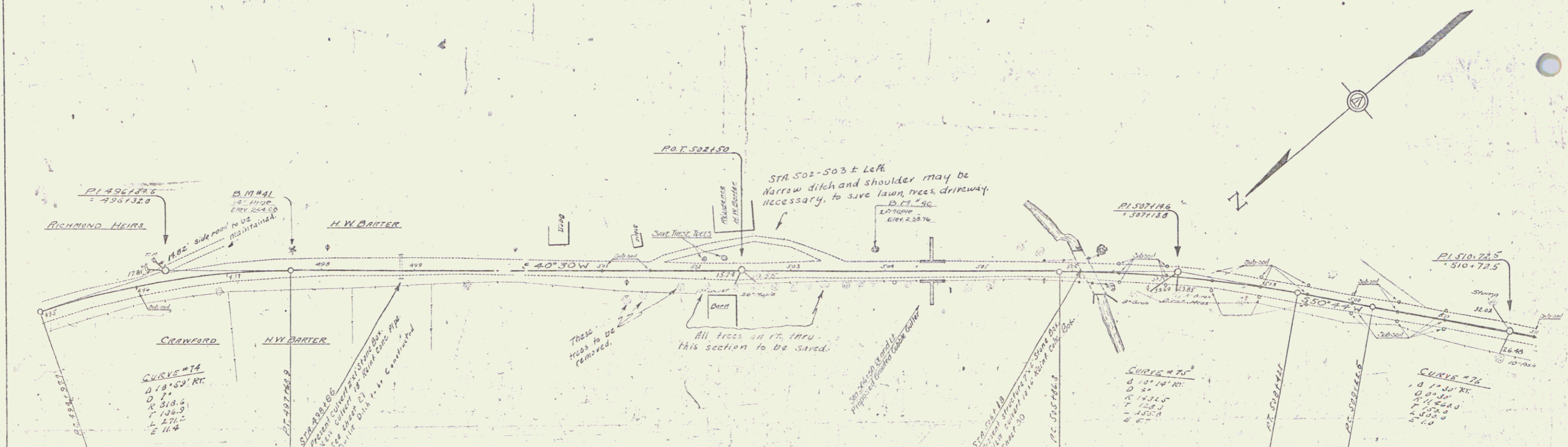
SERIES 77G
 SHEET 17 OF 67

POOR ORIGINAL COPY

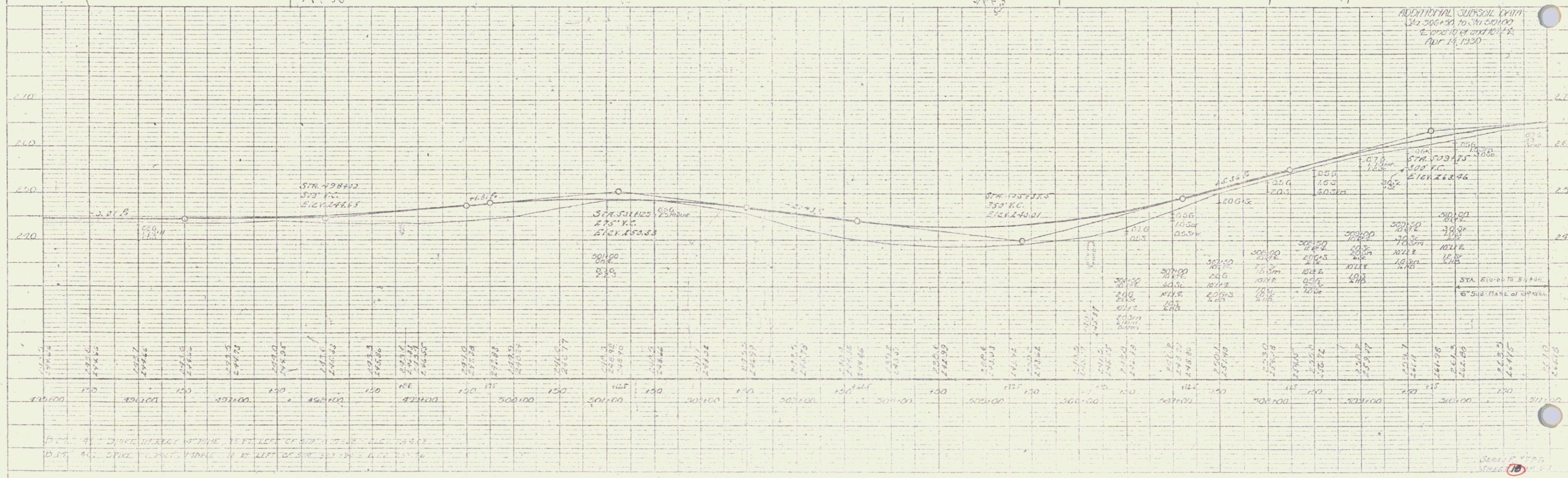
WOOD BOARD RAIL REQUIRED		CABLE GUARD RAIL REQUIRED		NEW RAIL CONC. P.C. CULVERTS REQUIRED		NEW RAIL CONC. SPAC. CULVERTS REQUIRED	
Station	L.R. R.M.	Station	L.R. R.M.	Station	Size	Station	Size
498+96	14A 14A	503+98-506+46	296H 328 H	498+86	18' 40A 30Lcy 33'	506+18	14'6" 30Lcy 7737'

77.6 1920 10 57

DATE: 1/24/24
 DRAWN BY: J. J. [unclear]
 CHECKED BY: [unclear]
 PROJECT: [unclear]



DATE: 1/24/24
 DRAWN BY: J. J. [unclear]
 CHECKED BY: [unclear]
 PROJECT: [unclear]



POOR ORIGINAL COPY

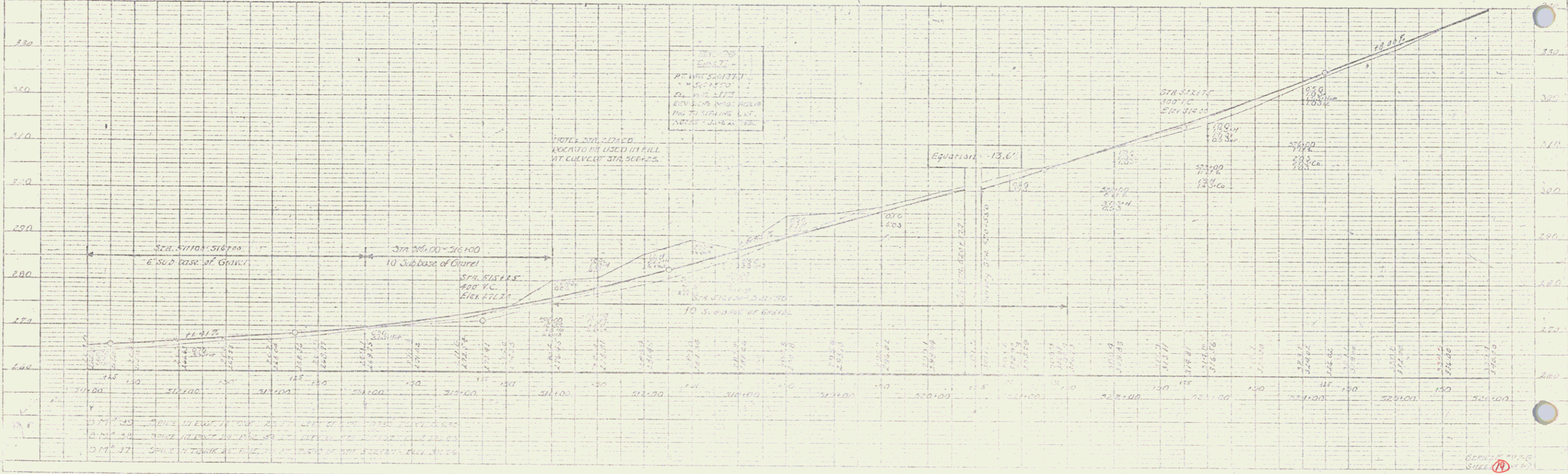
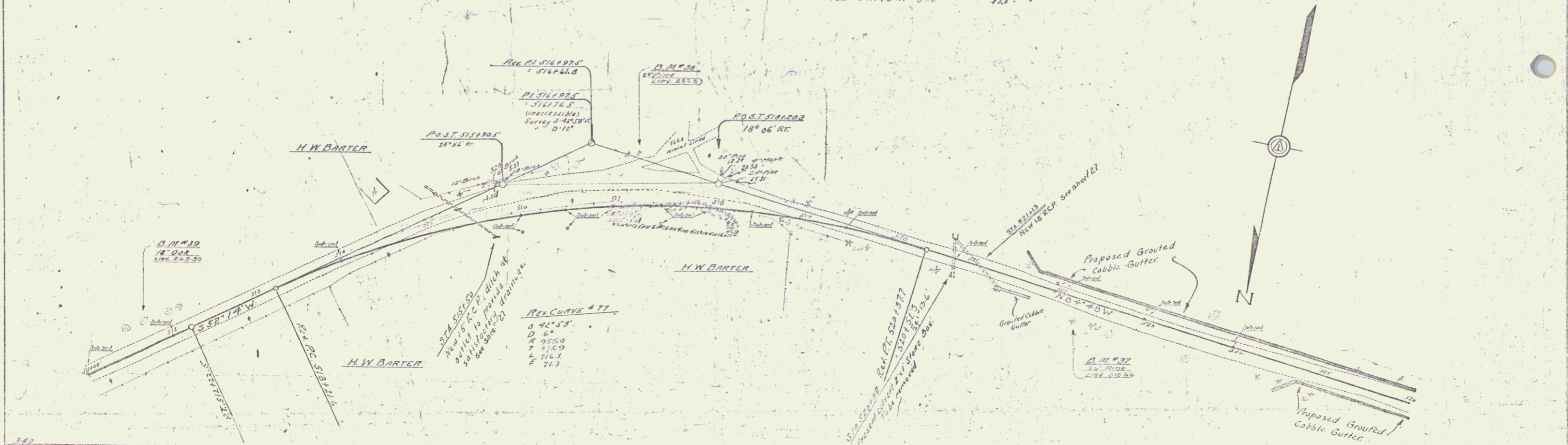
Wood Sound Rd. Extension
 Station 242 Right
 521450 242 24 PA
 521413 242 24 PA

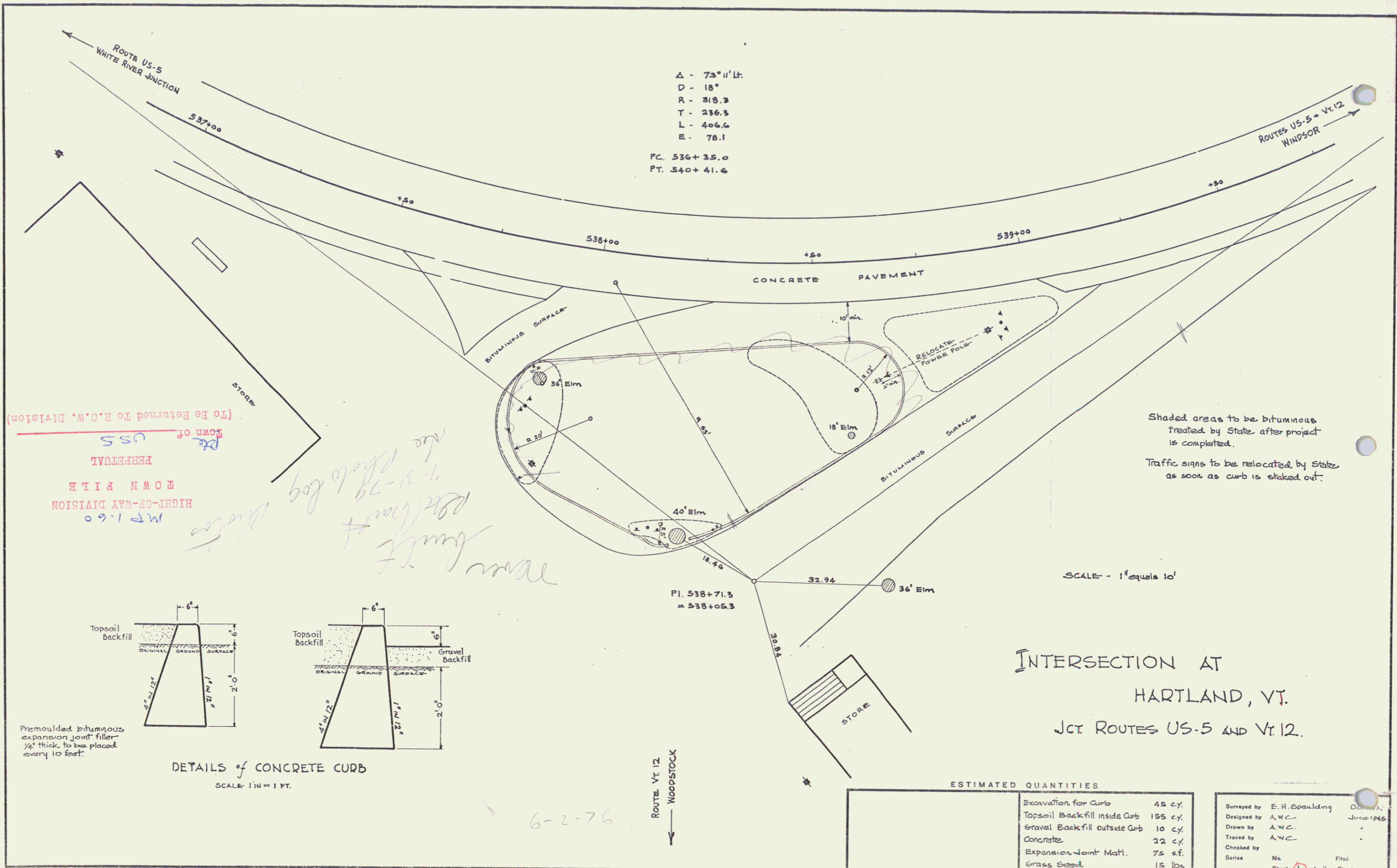
New Drive Edge Apr Concrete Retained
 Station Diam. Loop. Conc. C. Slope DI. in cut/ft
 521550 15 12H. 2.3cy. - 3.3"
 521713 15 60H. - 2.3 1.69" 1 1

GRAVELLED GUTTER GUTTERS 24" WIDE
 STA. WIDTH BASED
 521475-521600 24 5'-0" 150 sq. ft.
 521675-521800 24 3'-0" 66 -
 521850-521975 24 3'-0" 133 -

77-6 1230 13 67

PL. 11
 DATE
 REVISIONS
 BY
 CHECKED
 DATE
 REVISIONS
 BY
 CHECKED





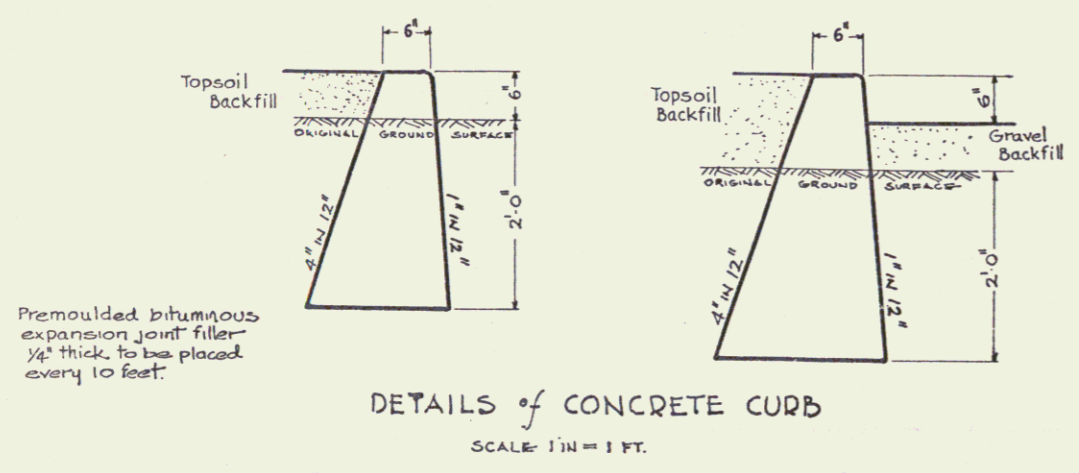
(To Be Returned To R.O.M. Division)
 Town of US-5
 PERPETUAL
 COMMON FILE
 HIGHWAY-OR-WAY DIVISION
 M.P. 1.60

Handwritten notes:
 new curb
 backfill
 1-31-79
 the back log
 6-2-76

Shaded areas to be bituminous
 treated by State after project
 is completed.
 Traffic signs to be relocated by State
 as soon as curb is staked out.

SCALE - 1" equals 10'

INTERSECTION AT
 HARTLAND, VT.
 JCT. ROUTES US-5 AND VT. 12.



ESTIMATED QUANTITIES

Excavation for Curb	45 cy.
Topsoil Backfill inside Curb	155 cy.
Gravel Backfill outside Curb	10 cy.
Concrete	22 cy.
Expansion Joint Matl.	75 sf.
Grass Seed	15 lbs.

Surveyed by	E. H. Spaulding	Date	June 1945
Designed by	A.W.C.		
Drawn by	A.W.C.		
Traced by	A.W.C.		
Checked by			
Series	No.	Filed	
		Sheet	1 of 2 Sheets

WOOD GUARD RAIL REQUIRED		
LEFT STA	RIGHT STA	REQUIREMENT
553+21	553+21	24'
553+20	553+20	24'
553+19	553+19	24'
553+18	553+18	24'
553+17	553+17	24'
553+16	553+16	24'
553+15	553+15	24'
553+14	553+14	24'
553+13	553+13	24'

WATER GUARD RAIL REQUIRED		
LEFT STA	RIGHT STA	REQUIREMENT
553+10	553+10	24'
553+09	553+09	24'
553+08	553+08	24'
553+07	553+07	24'
553+06	553+06	24'
553+05	553+05	24'
553+04	553+04	24'
553+03	553+03	24'
553+02	553+02	24'
553+01	553+01	24'

WOOD GUARD RAIL REQUIRED		
LEFT STA	RIGHT STA	REQUIREMENT
552+70	552+70	24'
552+60	552+60	24'
552+50	552+50	24'
552+40	552+40	24'
552+30	552+30	24'
552+20	552+20	24'
552+10	552+10	24'
552+00	552+00	24'

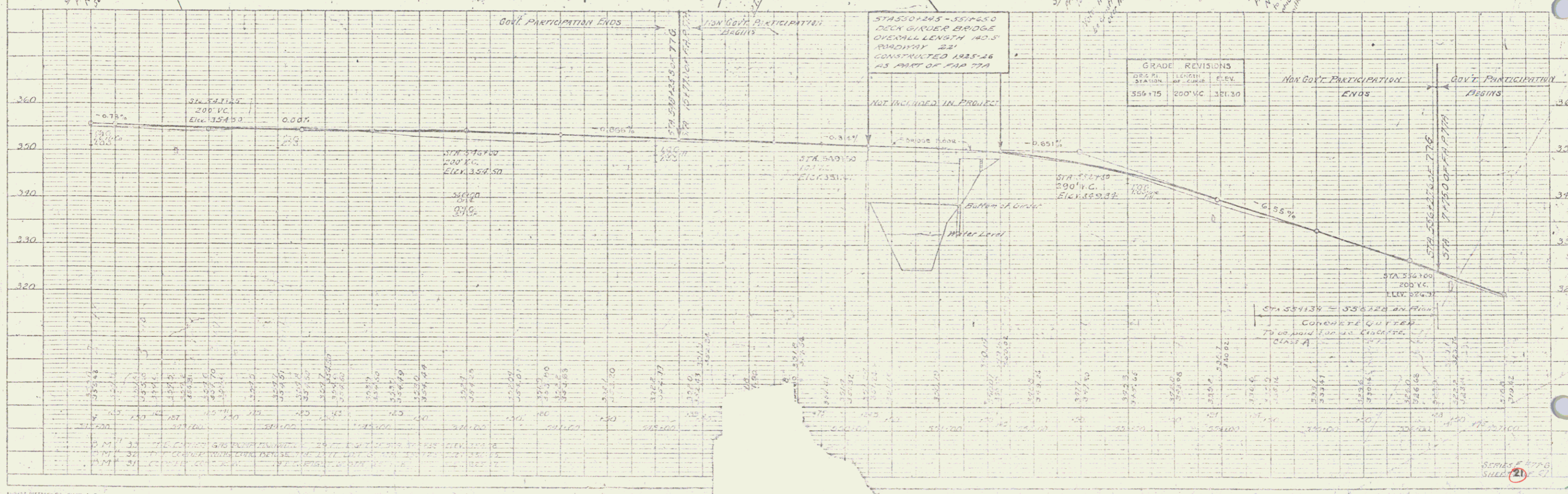
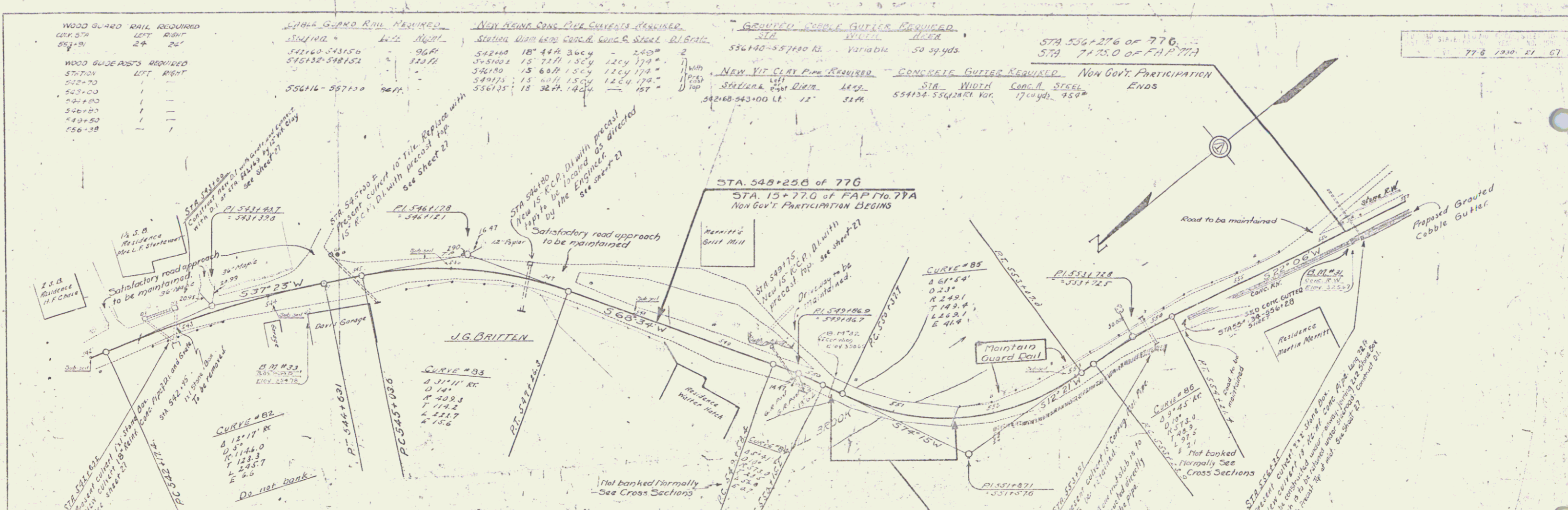
WOOD GUARD RAIL REQUIRED		
LEFT STA	RIGHT STA	REQUIREMENT
551+40	551+40	24'
551+30	551+30	24'
551+20	551+20	24'
551+10	551+10	24'
551+00	551+00	24'

WOOD GUARD RAIL REQUIRED		
LEFT STA	RIGHT STA	REQUIREMENT
550+10	550+10	24'
550+00	550+00	24'

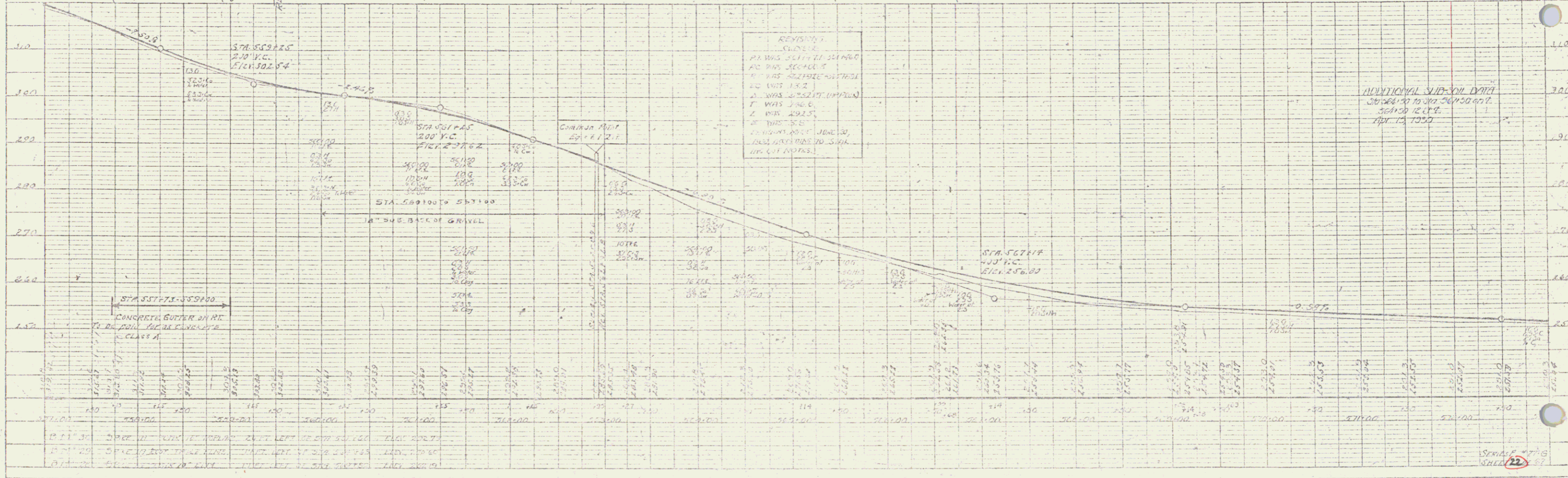
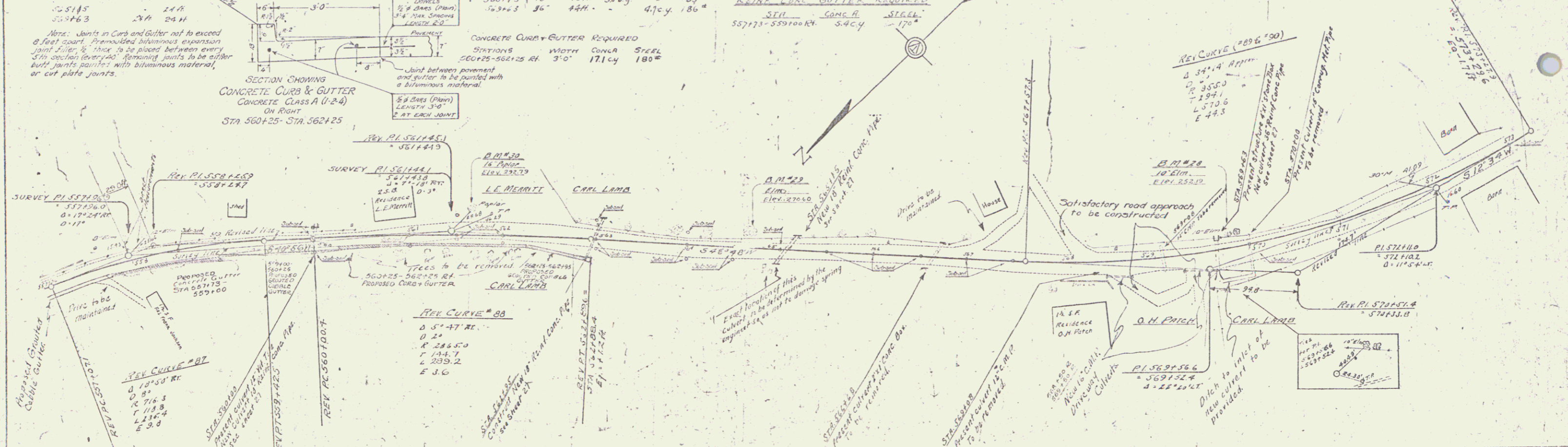
WOOD GUARD RAIL REQUIRED		
LEFT STA	RIGHT STA	REQUIREMENT
549+10	549+10	24'
549+00	549+00	24'

STA 556+276 OF 776
STA 7+25.0 OF FAP 77A

PLAN
DATE: 1/25/50
BY: J. W. GIBSON
CHECKED: J. W. GIBSON
APPROVED: J. W. GIBSON



WOOD GUARD RAIL REQUIRED		SABLE GUARD RAIL REQUIRED		NEW REIN CONC. PIPE CURB, REQUIRED				GRAVITY CURBUT GUTTERS, REQUIRED			G.M.F. DRIVEWAY, CONCRETE, REQUIRED				
STATION	LEN.	STATION	LEN.	STATION	DIAM.	LEN.	CONC. C.	CONC. S.	STATION	WIDTH	DEPTH	LEN.	CONC. C.	CONC. S.	
560100	24 ft	557100-560116	216 ft	560100	18"	44 ft	13 cy	0.001 43"	557100-557173 RY	3'-0"	2'-7 1/2 yds	560150 RY	16"	36 ft	27 cy
562195	24 ft	562176-566160	384 ft	562195	18"	50 ft	38 cy	33"	559100-560125 RY	Variable	55"	560150 RY	16"	36 ft	27 cy
551145	24 ft			562115	18"	45 ft	38 cy	33"	562125-562195 RY	Variable	31"				
552163	24 ft			562125	30"	44 ft	47 cy	180"	REIN. CONC. GUTTERS, REQUIRED						



DATE: 11/15/55
 DRAWN BY: J. Thompson
 CHECKED BY: J. Thompson
 PROJECT NO.: 77 G 1930 22 67

REVISIONS:
 1. PA WAS 561117-561160
 2. PA WAS 561161-561204
 3. PA WAS 561205-561248
 4. PA WAS 561249-561292
 5. PA WAS 561293-561336
 6. PA WAS 561337-561380
 7. PA WAS 561381-561424
 8. PA WAS 561425-561468
 9. PA WAS 561469-561512
 10. PA WAS 561513-561556
 11. PA WAS 561557-561600
 12. PA WAS 561601-561644
 13. PA WAS 561645-561688
 14. PA WAS 561689-561732
 15. PA WAS 561733-561776
 16. PA WAS 561777-561820
 17. PA WAS 561821-561864
 18. PA WAS 561865-561908
 19. PA WAS 561909-561952
 20. PA WAS 561953-561996
 21. PA WAS 561997-562040
 22. PA WAS 562041-562084
 23. PA WAS 562085-562128
 24. PA WAS 562129-562172
 25. PA WAS 562173-562216
 26. PA WAS 562217-562260
 27. PA WAS 562261-562304
 28. PA WAS 562305-562348
 29. PA WAS 562349-562392
 30. PA WAS 562393-562436
 31. PA WAS 562437-562480
 32. PA WAS 562481-562524
 33. PA WAS 562525-562568
 34. PA WAS 562569-562612
 35. PA WAS 562613-562656
 36. PA WAS 562657-562700
 37. PA WAS 562701-562744
 38. PA WAS 562745-562788
 39. PA WAS 562789-562832
 40. PA WAS 562833-562876
 41. PA WAS 562877-562920
 42. PA WAS 562921-562964
 43. PA WAS 562965-563008
 44. PA WAS 563009-563052
 45. PA WAS 563053-563096
 46. PA WAS 563097-563140
 47. PA WAS 563141-563184
 48. PA WAS 563185-563228
 49. PA WAS 563229-563272
 50. PA WAS 563273-563316
 51. PA WAS 563317-563360
 52. PA WAS 563361-563404
 53. PA WAS 563405-563448
 54. PA WAS 563449-563492
 55. PA WAS 563493-563536
 56. PA WAS 563537-563580
 57. PA WAS 563581-563624
 58. PA WAS 563625-563668
 59. PA WAS 563669-563712
 60. PA WAS 563713-563756
 61. PA WAS 563757-563800
 62. PA WAS 563801-563844
 63. PA WAS 563845-563888
 64. PA WAS 563889-563932
 65. PA WAS 563933-563976
 66. PA WAS 563977-564020
 67. PA WAS 564021-564064
 68. PA WAS 564065-564108
 69. PA WAS 564109-564152
 70. PA WAS 564153-564196
 71. PA WAS 564197-564240
 72. PA WAS 564241-564284
 73. PA WAS 564285-564328
 74. PA WAS 564329-564372
 75. PA WAS 564373-564416
 76. PA WAS 564417-564460
 77. PA WAS 564461-564504
 78. PA WAS 564505-564548
 79. PA WAS 564549-564592
 80. PA WAS 564593-564636
 81. PA WAS 564637-564680
 82. PA WAS 564681-564724
 83. PA WAS 564725-564768
 84. PA WAS 564769-564812
 85. PA WAS 564813-564856
 86. PA WAS 564857-564900
 87. PA WAS 564901-564944
 88. PA WAS 564945-564988
 89. PA WAS 564989-565032
 90. PA WAS 565033-565076
 91. PA WAS 565077-565120
 92. PA WAS 565121-565164
 93. PA WAS 565165-565208
 94. PA WAS 565209-565252
 95. PA WAS 565253-565296
 96. PA WAS 565297-565340
 97. PA WAS 565341-565384
 98. PA WAS 565385-565428
 99. PA WAS 565429-565472
 100. PA WAS 565473-565516
 101. PA WAS 565517-565560
 102. PA WAS 565561-565604
 103. PA WAS 565605-565648
 104. PA WAS 565649-565692
 105. PA WAS 565693-565736
 106. PA WAS 565737-565780
 107. PA WAS 565781-565824
 108. PA WAS 565825-565868
 109. PA WAS 565869-565912
 110. PA WAS 565913-565956
 111. PA WAS 565957-566000
 112. PA WAS 566001-566044
 113. PA WAS 566045-566088
 114. PA WAS 566089-566132
 115. PA WAS 566133-566176
 116. PA WAS 566177-566220
 117. PA WAS 566221-566264
 118. PA WAS 566265-566308
 119. PA WAS 566309-566352
 120. PA WAS 566353-566396
 121. PA WAS 566397-566440
 122. PA WAS 566441-566484
 123. PA WAS 566485-566528
 124. PA WAS 566529-566572
 125. PA WAS 566573-566616
 126. PA WAS 566617-566660
 127. PA WAS 566661-566704
 128. PA WAS 566705-566748
 129. PA WAS 566749-566792
 130. PA WAS 566793-566836
 131. PA WAS 566837-566880
 132. PA WAS 566881-566924
 133. PA WAS 566925-566968
 134. PA WAS 566969-567012
 135. PA WAS 567013-567056
 136. PA WAS 567057-567100
 137. PA WAS 567101-567144
 138. PA WAS 567145-567188
 139. PA WAS 567189-567232
 140. PA WAS 567233-567276
 141. PA WAS 567277-567320
 142. PA WAS 567321-567364
 143. PA WAS 567365-567408
 144. PA WAS 567409-567452
 145. PA WAS 567453-567496
 146. PA WAS 567497-567540
 147. PA WAS 567541-567584
 148. PA WAS 567585-567628
 149. PA WAS 567629-567672
 150. PA WAS 567673-567716
 151. PA WAS 567717-567760
 152. PA WAS 567761-567804
 153. PA WAS 567805-567848
 154. PA WAS 567849-567892
 155. PA WAS 567893-567936
 156. PA WAS 567937-567980
 157. PA WAS 567981-568024
 158. PA WAS 568025-568068
 159. PA WAS 568069-568112
 160. PA WAS 568113-568156
 161. PA WAS 568157-568200
 162. PA WAS 568201-568244
 163. PA WAS 568245-568288
 164. PA WAS 568289-568332
 165. PA WAS 568333-568376
 166. PA WAS 568377-568420
 167. PA WAS 568421-568464
 168. PA WAS 568465-568508
 169. PA WAS 568509-568552
 170. PA WAS 568553-568596
 171. PA WAS 568597-568640
 172. PA WAS 568641-568684
 173. PA WAS 568685-568728
 174. PA WAS 568729-568772
 175. PA WAS 568773-568816
 176. PA WAS 568817-568860
 177. PA WAS 568861-568904
 178. PA WAS 568905-568948
 179. PA WAS 568949-568992
 180. PA WAS 568993-569036
 181. PA WAS 569037-569080
 182. PA WAS 569081-569124
 183. PA WAS 569125-569168
 184. PA WAS 569169-569212
 185. PA WAS 569213-569256
 186. PA WAS 569257-569300
 187. PA WAS 569301-569344
 188. PA WAS 569345-569388
 189. PA WAS 569389-569432
 190. PA WAS 569433-569476
 191. PA WAS 569477-569520
 192. PA WAS 569521-569564
 193. PA WAS 569565-569608
 194. PA WAS 569609-569652
 195. PA WAS 569653-569696
 196. PA WAS 569697-569740
 197. PA WAS 569741-569784
 198. PA WAS 569785-569828
 199. PA WAS 569829-569872
 200. PA WAS 569873-569916
 201. PA WAS 569917-569960
 202. PA WAS 569961-570004
 203. PA WAS 570005-570048
 204. PA WAS 570049-570092
 205. PA WAS 570093-570136
 206. PA WAS 570137-570180
 207. PA WAS 570181-570224
 208. PA WAS 570225-570268
 209. PA WAS 570269-570312
 210. PA WAS 570313-570356
 211. PA WAS 570357-570400
 212. PA WAS 570401-570444
 213. PA WAS 570445-570488
 214. PA WAS 570489-570532
 215. PA WAS 570533-570576
 216. PA WAS 570577-570620
 217. PA WAS 570621-570664
 218. PA WAS 570665-570708
 219. PA WAS 570709-570752
 220. PA WAS 570753-570796
 221. PA WAS 570797-570840
 222. PA WAS 570841-570884
 223. PA WAS 570885-570928
 224. PA WAS 570929-570972
 225. PA WAS 570973-571016
 226. PA WAS 571017-571060
 227. PA WAS 571061-571104
 228. PA WAS 571105-571148
 229. PA WAS 571149-571192
 230. PA WAS 571193-571236
 231. PA WAS 571237-571280
 232. PA WAS 571281-571324
 233. PA WAS 571325-571368
 234. PA WAS 571369-571412
 235. PA WAS 571413-571456
 236. PA WAS 571457-571500
 237. PA WAS 571501-571544
 238. PA WAS 571545-571588
 239. PA WAS 571589-571632
 240. PA WAS 571633-571676
 241. PA WAS 571677-571720
 242. PA WAS 571721-571764
 243. PA WAS 571765-571808
 244. PA WAS 571809-571852
 245. PA WAS 571853-571896
 246. PA WAS 571897-571940
 247. PA WAS 571941-571984
 248. PA WAS 571985-572028
 249. PA WAS 572029-572072
 250. PA WAS 572073-572116
 251. PA WAS 572117-572160
 252. PA WAS 572161-572204
 253. PA WAS 572205-572248
 254. PA WAS 572249-572292
 255. PA WAS 572293-572336
 256. PA WAS 572337-572380
 257. PA WAS 572381-572424
 258. PA WAS 572425-572468
 259. PA WAS 572469-572512
 260. PA WAS 572513-572556
 261. PA WAS 572557-572600
 262. PA WAS 572601-572644
 263. PA WAS 572645-572688
 264. PA WAS 572689-572732
 265. PA WAS 572733-572776
 266. PA WAS 572777-572820
 267. PA WAS 572821-572864
 268. PA WAS 572865-572908
 269. PA WAS 572909-572952
 270. PA WAS 572953-572996
 271. PA WAS 572997-573040
 272. PA WAS 573041-573084
 273. PA WAS 573085-573128
 274. PA WAS 573129-573172
 275. PA WAS 573173-573216
 276. PA WAS 573217-573260
 277. PA WAS 573261-573304
 278. PA WAS 573305-573348
 279. PA WAS 573349-573392
 280. PA WAS 573393-573436
 281. PA WAS 573437-573480
 282. PA WAS 573481-573524
 283. PA WAS 573525-573568
 284. PA WAS 573569-573612
 285. PA WAS 573613-573656
 286. PA WAS 573657-573700
 287. PA WAS 573701-573744
 288. PA WAS 573745-573788
 289. PA WAS 573789-573832
 290. PA WAS 573833-573876
 291. PA WAS 573877-573920
 292. PA WAS 573921-573964
 293. PA WAS 573965-574008
 294. PA WAS 574009-574052
 295. PA WAS 574053-574096
 296. PA WAS 574097-574140
 297. PA WAS 574141-574184
 298. PA WAS 574185-574228
 299. PA WAS 574229-574272
 300. PA WAS 574273-574316
 301. PA WAS 574317-574360
 302. PA WAS 574361-574404
 303. PA WAS 574405-574448
 304. PA WAS 574449-574492
 305. PA WAS 574493-574536
 306. PA WAS 574537-574580
 307. PA WAS 574581-574624
 308. PA WAS 574625-574668
 309. PA WAS 574669-574712
 310. PA WAS 574713-574756
 311. PA WAS 574757-574800
 312. PA WAS 574801-574844
 313. PA WAS 574845-574888
 314. PA WAS 574889-574932
 315. PA WAS 574933-574976
 316. PA WAS 574977-575020
 317. PA WAS 575021-575064
 318. PA WAS 575065-575108
 319. PA WAS 575109-575152
 320. PA WAS 575153-575196
 321. PA WAS 575197-575240
 322. PA WAS 575241-575284
 323. PA WAS 575285-575328
 324. PA WAS 575329-575372
 325. PA WAS 575373-575416
 326. PA WAS 575417-575460
 327. PA WAS 575461-575504
 328. PA WAS 575505-575548
 329. PA WAS 575549-575592
 330. PA WAS 575593-575636
 331. PA WAS 575637-575680
 332. PA WAS 575681-575724
 333. PA WAS 575725-575768
 334. PA WAS 575769-575812
 335. PA WAS 575813-575856
 336. PA WAS 575857-575900
 337. PA WAS 575901-575944
 338. PA WAS 575945-575988
 339. PA WAS 575989-576032
 340. PA WAS 576033-576076
 341. PA WAS 576077-576120
 342. PA WAS 576121-576164
 343. PA WAS 576165-576208
 344. PA WAS 576209-576252
 345. PA WAS 576253-576296
 346. PA WAS 576297-576340
 347. PA WAS 576341-576384
 348. PA WAS 576385-576428
 349. PA WAS 576429-576472
 350. PA WAS 576473-576516
 351. PA WAS 576517-576560
 352. PA WAS 576561-576604
 353. PA WAS 576605-576648
 354. PA WAS 576649-576692
 355. PA WAS 576693-576736
 356. PA WAS 576737-576780
 357. PA WAS 576781-576824
 358. PA WAS 576825-576868
 359. PA WAS 576869-576912
 360. PA WAS 576913-576956
 361. PA WAS 576957-577000
 362. PA WAS 577001-577044
 363. PA WAS 577045-577088
 364. PA WAS 577089-577132
 365. PA WAS 577133-577176
 366. PA WAS 577177-577220
 367. PA WAS 577221-577264
 368. PA WAS 577265-577308
 369. PA WAS 577309-577352
 370. PA WAS 577353-577396
 371. PA WAS 577397-577440
 372. PA WAS 577441-577484
 373. PA WAS 577485-577528
 374. PA WAS 577529-577572
 375. PA WAS 577573-577616
 376. PA WAS 577617-577660
 377. PA WAS 577661-577704
 378. PA WAS 577705-577748
 379. PA WAS 577749-577792
 380. PA WAS 577793-577836
 381. PA WAS 577837-577880
 382. PA WAS 577881-577924
 383. PA WAS 577925-577968
 384. PA WAS 577969-578012
 385. PA WAS 578013-578056
 386. PA WAS 578057-578100
 387. PA WAS 578101-578144
 388. PA WAS 578145-578188
 389. PA WAS 578189-578232
 390. PA WAS 578233-578276
 391. PA WAS 578277-578320
 392. PA WAS 578321-578364
 393. PA WAS 578365-578408
 394. PA WAS 578409-578452
 395. PA WAS 578453-578496
 396. PA WAS 578497-578540
 397. PA WAS 578541-578584
 398. PA WAS 578585-578628
 399. PA WAS 578629-578672
 400. PA WAS 578673-578716
 401. PA WAS 578717-578760
 402. PA WAS 578761-578804
 403. PA WAS 578805-578848
 404. PA WAS 578849-578892
 405. PA WAS 578893-578936
 406. PA WAS 578937-578980
 407. PA WAS 578981-579024
 408. PA WAS 579025-579068
 409. PA WAS 579069-579112
 410. PA WAS 579113-579156
 411. PA WAS 579157-579200
 412. PA WAS 579201-579244
 413. PA WAS 579245-579288
 414. PA WAS 579289-579332
 415. PA WAS 579333-579376
 416. PA WAS 579377-579420
 417. PA WAS 579421-579464
 418. PA WAS 579465-579508
 419. PA WAS 579509-579552
 420. PA WAS 579553-579596
 421. PA WAS 579597-579640
 422. PA WAS 579641-579684
 423. PA WAS 579685-579728
 424. PA WAS 579729-579772
 425. PA WAS 579773-579816
 426. PA WAS 579817-579860
 427. PA WAS 579861-579904
 428. PA WAS 579905-579948
 429. PA WAS 579949-580000

WOOD BOARD ARE REQUIRED

STATION	LEFT	RIGHT
576100	24.8	24.8

CABLE GUARD RAIL REQUIRED

STATION	LEFT	RIGHT
576172-580100	318.8	
576160-579196	136.8	

NEW REINFORCED CONCRETE PIPE CONCRETE REQUIRED

STATION	PIPE DIA.	LENGTH	CY
576100	18"	70.0	33.0

NEW REINFORCED CONCRETE BOX CONCRETE REQUIRED

STATION	SIZE	LENGTH	CY
576125	48" x 48"	39.7	3.3

GRADED COBBLE GUTTER REQUIRED

STATIONS	LEAK	WIDTH	LENGTH	AREA
576125-576135	3.0"	3.0"	10.0'	30.0 sq ft
577135-578108	3.0"	3.0"	70.5'	233.7 sq ft

Delivery Pipe Culverts Required

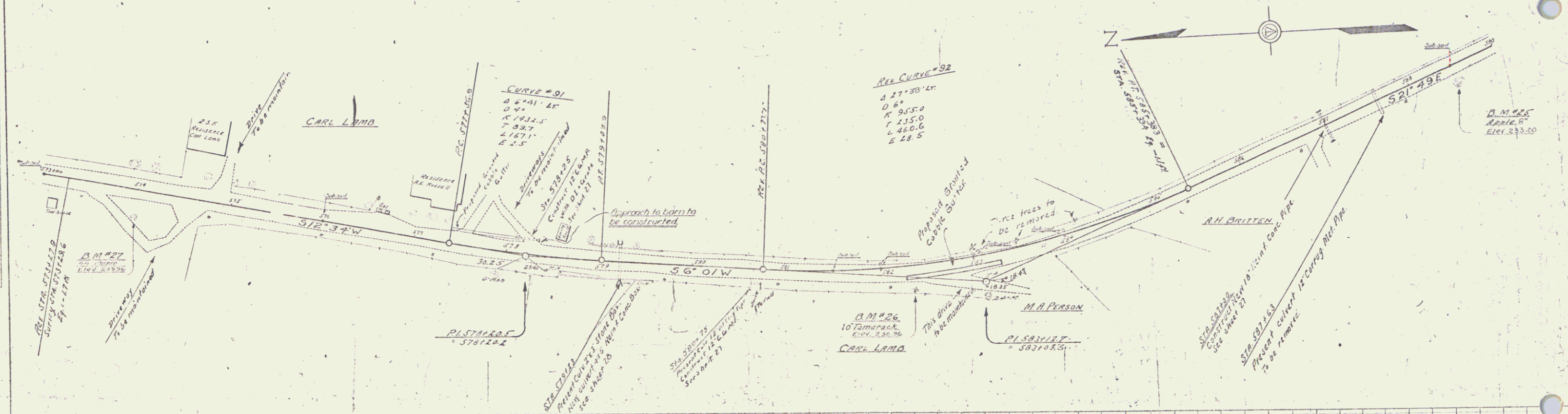
Station	Length	Width	Depth	Area	D.I.S. No.
576125	12'	36"	12"	1	
580175	12'	24"	12"	1	

Cement/Pavement Material

Material	Quantity
12" cy	12.0
4.5 cy	4.5

77.6 1938 23 67

PLAN
DATE: 10/15/54
SCALE: AS SHOWN
PROJECT: BRIDGE OVER R.R. CROSSING
DRAWN BY: E. H. HARRIS
CHECKED BY: J. W. HARRIS



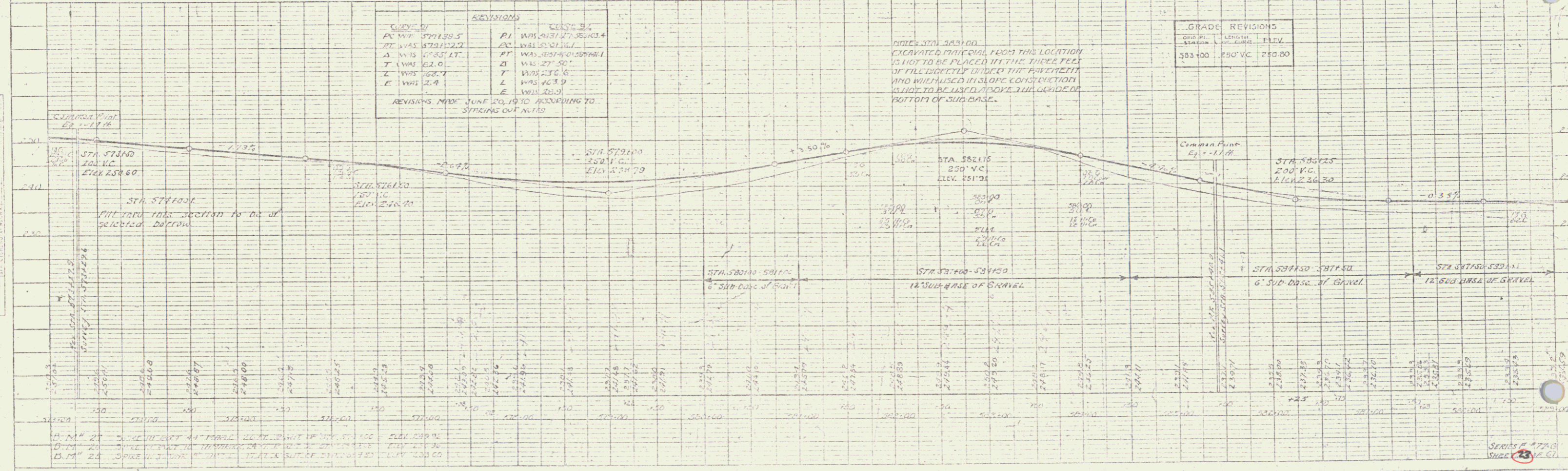
REVISIONS

NO.	DATE	DESCRIPTION
1		...
2		...
3		...
4		...
5		...
6		...
7		...
8		...
9		...
10		...

EXCAVATED MATERIAL FROM THIS LOCATION IS NOT TO BE PLACED IN THE THREE FEET OF FILL DIRECTLY UNDER THE PAVEMENT AND WHICH IS USED IN SLOPE CONSTRUCTION IS TO BE USED ABOVE THE GRADE OF BOTTOM OF SUB-BASE.

GRADE REVISIONS

STATION	LENGTH	ELEV.
583+00	250' V.C.	250.00



STATIONING: 576100, 576125, 576150, 576175, 576200, 576225, 576250, 576275, 576300, 576325, 576350, 576375, 576400, 576425, 576450, 576475, 576500, 576525, 576550, 576575, 576600, 576625, 576650, 576675, 576700, 576725, 576750, 576775, 576800, 576825, 576850, 576875, 576900, 576925, 576950, 576975, 577000, 577025, 577050, 577075, 577100, 577125, 577150, 577175, 577200, 577225, 577250, 577275, 577300, 577325, 577350, 577375, 577400, 577425, 577450, 577475, 577500, 577525, 577550, 577575, 577600, 577625, 577650, 577675, 577700, 577725, 577750, 577775, 577800, 577825, 577850, 577875, 577900, 577925, 577950, 577975, 578000, 578025, 578050, 578075, 578100, 578125, 578150, 578175, 578200, 578225, 578250, 578275, 578300, 578325, 578350, 578375, 578400, 578425, 578450, 578475, 578500, 578525, 578550, 578575, 578600, 578625, 578650, 578675, 578700, 578725, 578750, 578775, 578800, 578825, 578850, 578875, 578900, 578925, 578950, 578975, 579000, 579025, 579050, 579075, 579100, 579125, 579150, 579175, 579200, 579225, 579250, 579275, 579300, 579325, 579350, 579375, 579400, 579425, 579450, 579475, 579500, 579525, 579550, 579575, 579600, 579625, 579650, 579675, 579700, 579725, 579750, 579775, 579800, 579825, 579850, 579875, 579900, 579925, 579950, 579975, 580000, 580025, 580050, 580075, 580100

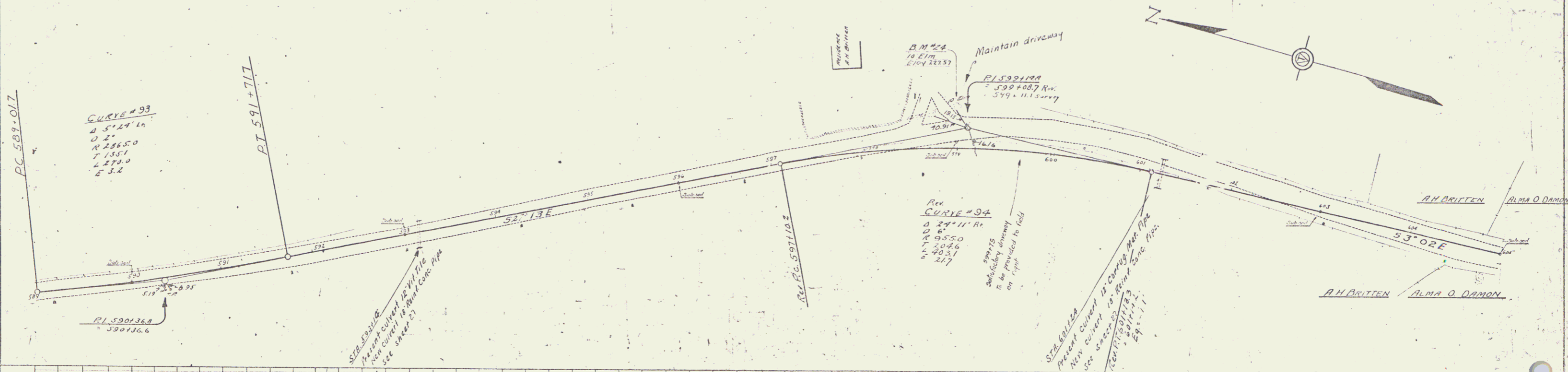
SERIES # 477-C
SCALE 1" = 40'

3" x 3" GALV. NAIL REQUIRED.
 STATIONED L.H. ROAD
 53114 14H 24H
 53124 24H 24H

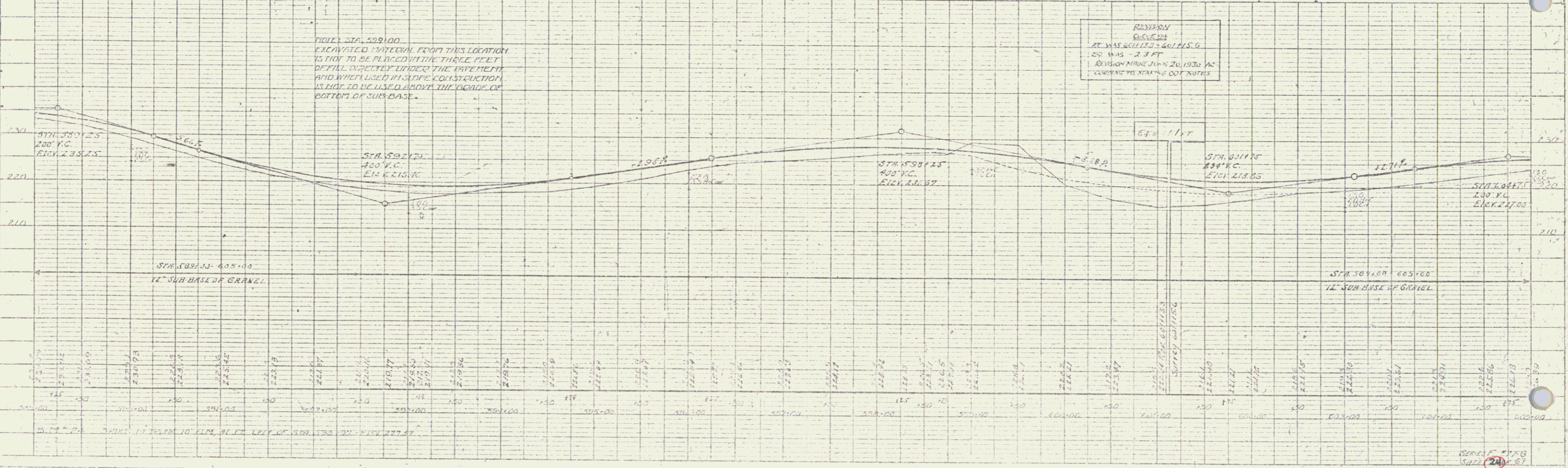
NEW REIN. CONC. PIPE CULVERT REQUIRED.
 Station Diam 60" 2' Steel
 53114 13' 44H 30CY 33"
 53124 10' 44H 30CY 33"

77.6. 1930 24 67

PLAN
 DATE
 DRAWN BY
 CHECKED BY
 IN CHARGE



PROFILE
 DATE
 DRAWN BY
 CHECKED BY
 IN CHARGE



SERIES 1778
 SHEET 24 OF 67

WOOD GUARD RAIL REQUIRED

Station	Left	Right
6071.50	24 H.	24 H.
6141.05	24 H.	24 H.

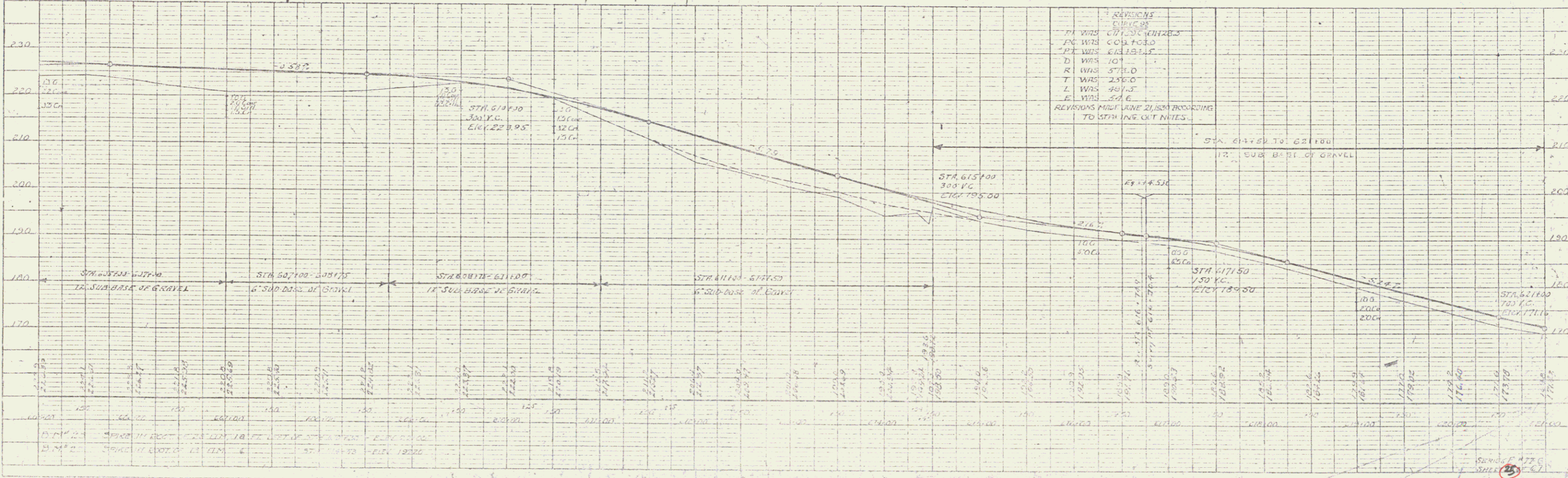
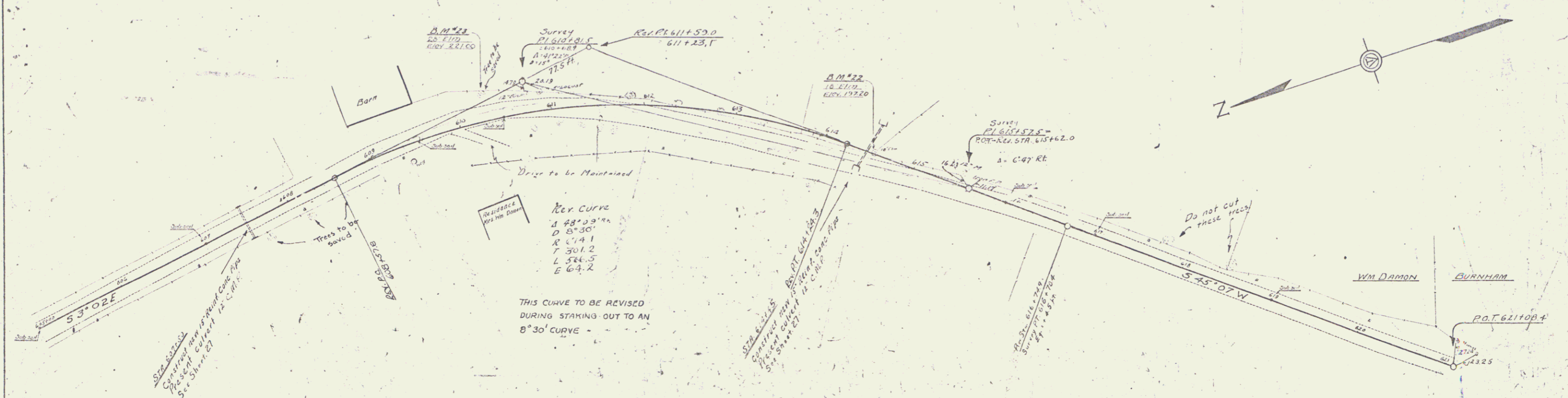
CABLE GUARD RAIL REQUIRED

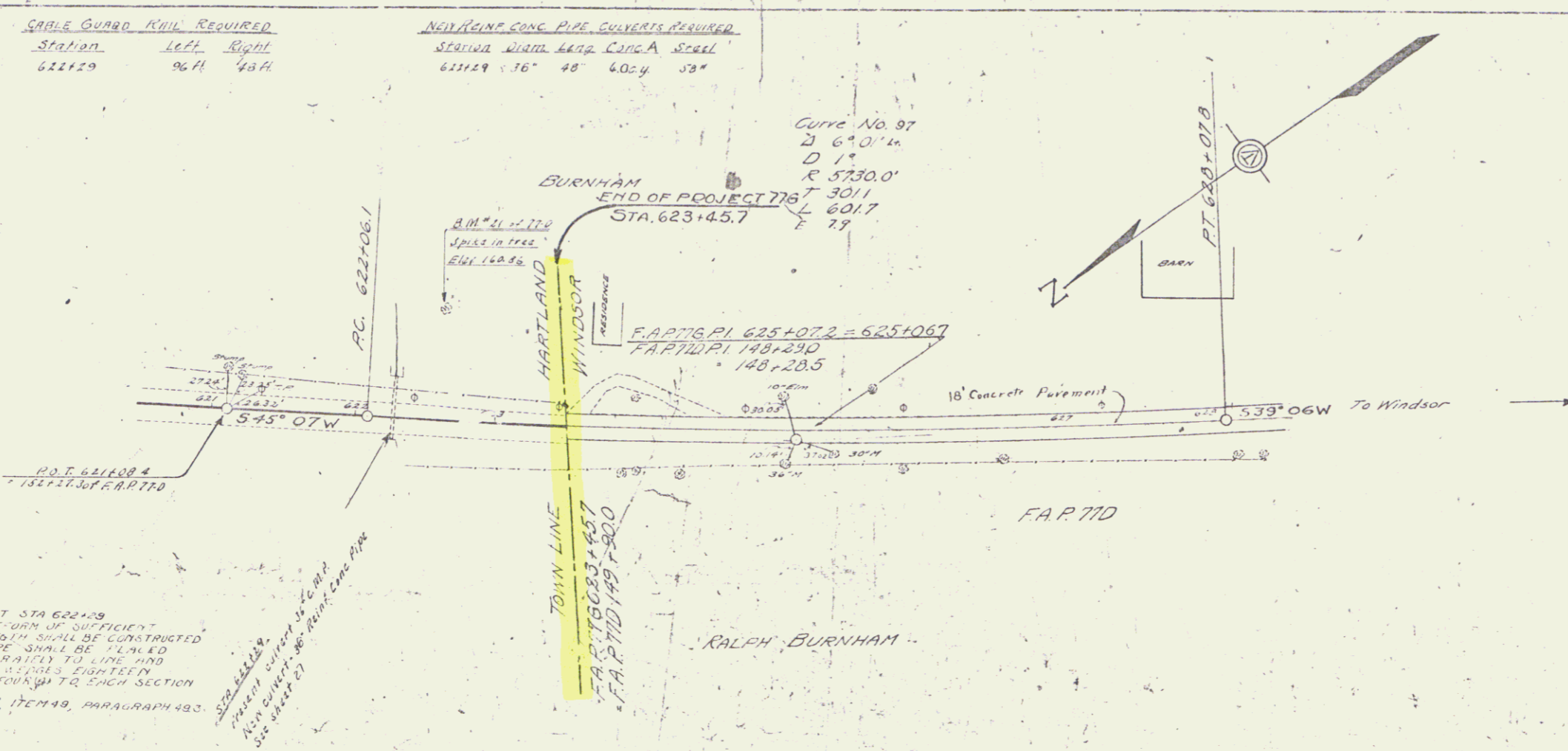
Station	Left	Right
6114.8	24 H.	24 H.
6141.05	24 H.	24 H.

NEW PAINE CONC. PIPE CULVERTS REQUIRED

Station	Diag.	24" Dia.	24" Dia.	30" Dia.	30" Dia.
6071.50	15'	48 H.	23 Cy.	33'	
6141.05	15'	52 H.		52'	16 Cy.

T.T.C. 1230 25 67





NOTE: CONCRETE STAGGERS
 A TIMBER PLANT-ORM OF SUFFICIENT
 WIDTH AND STRENGTH SHALL BE CONSTRUCTED
 OVER WHICH THE PIPE SHALL BE LAYED
 AND WELDED ACCURATELY TO LINE AND
 GRADE WITH 4\"/>

SCALE	1" = 40'
PIPE RADIUS	AS SHOWN
DATE	
BY	
CHECKED	
APPROVED	

