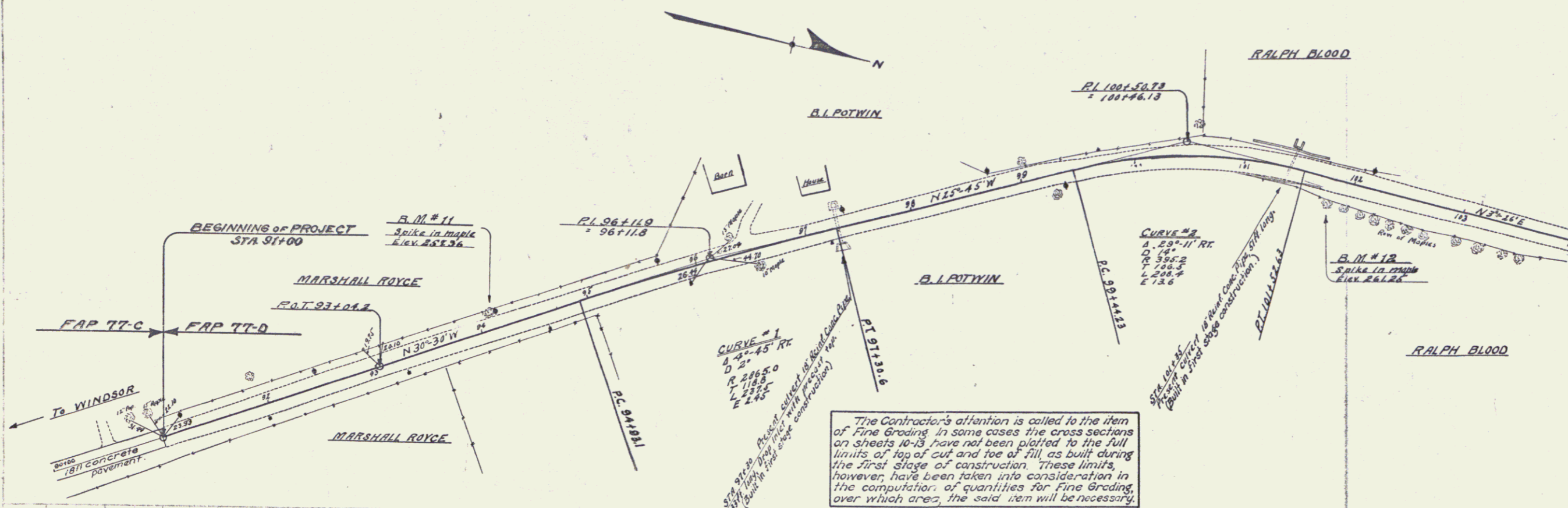


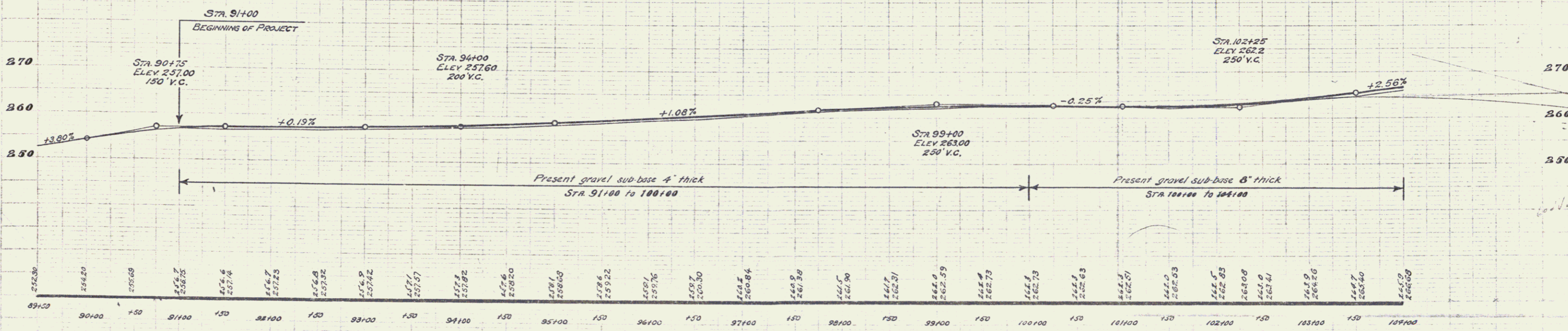


WOOD GUARD RAIL REQUIRED  
 Stations Left Right  
 97+18-97+42 24 Lin. Ft. 24 Lin. Ft.  
 101+23-101+47 24 " " 24 " "

FED. ROAD DIST. NO.	STATE	FED. AID PROJ. NO.	FISCAL YEAR	SHEET NO.	TOTAL SHEETS
9	VT.	110	1959	4	13



The Contractor's attention is called to the item of Fine Grading. In some cases the cross sections on sheets 10-13 have not been plotted to the full limits of top of cut and toe of fill, as built during the first stage of construction. These limits, however, have been taken into consideration in the computation of quantities for Fine Grading, over which area, the said item will be necessary.



B.M. #11 Spike in 8' Maple, left of Sta. 97+11. Elev 257.56  
 B.M. #12 Spike in root of 10' Maple, right of Sta. 101+76. Elev 261.25

SERIES F # 77-D  
 SHEET 4 OF 13

WOOD GUARD RAIL REQUIRED

Stations	Left	Right
106+88-107+12	24 Lin. Ft.	24 Lin. Ft.
111+38-111+62	24 "	-

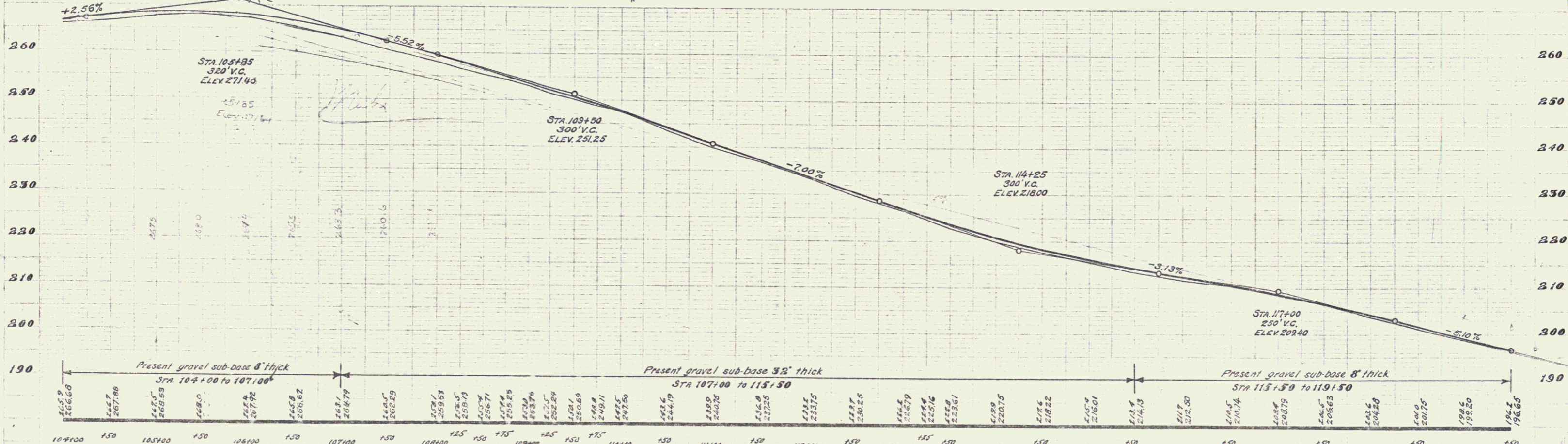
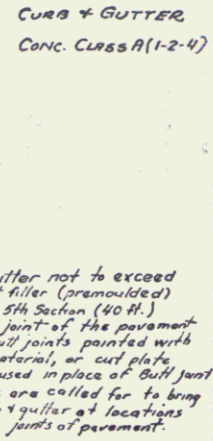
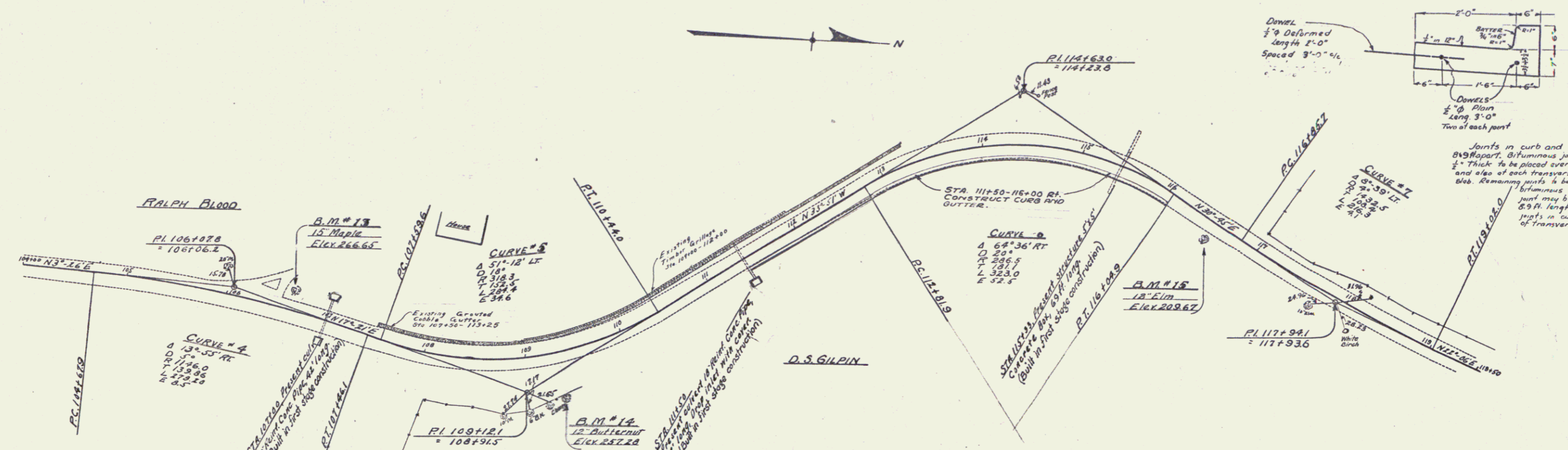
CABLE GUARD RAIL REQUIRED

Stations	Left	Right
110+26-111+62	-	136 Lin. Ft.
112+25-115+93	-	368 "
115+09-115+31	48 Lin. Ft.	-

CONCRETE CURB + GUTTER REQUIRED

STATIONS	L & R	LENG.	WIDTH OF GUTTER	HEIGHT OF CURB	CONC. A	STEEL
111+50-116+00	Right	450 Ft.	2'-0"	6"	2504	905#

FED. ROAD DIST. NO.	STATE	FED. AID PROJ. NO.	FISCAL YEAR	SHEET NO.	TOTAL SHEETS
2	VT	11-D	1929	5	13



Present gravel sub-base 8" thick  
 STA 104+00 to 107+00  
 Present gravel sub-base 5 1/2" thick  
 STA 107+00 to 115+50  
 Present gravel sub-base 8" thick  
 STA 115+50 to 119+50

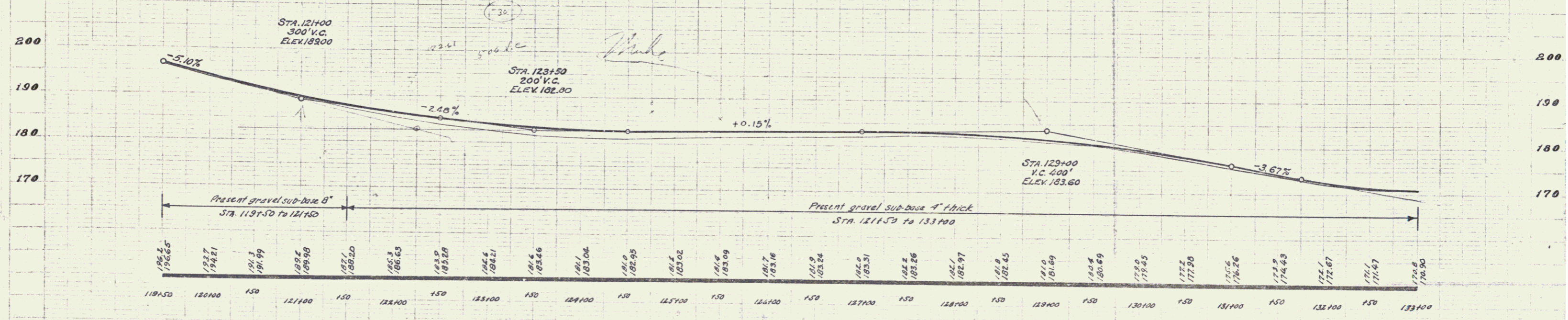
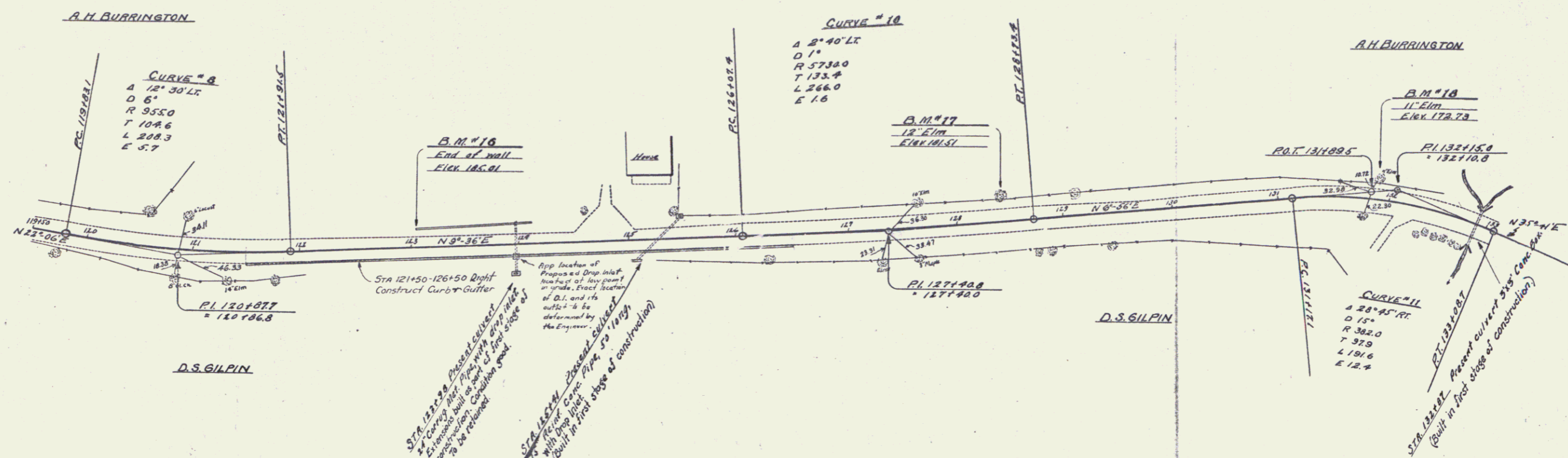
B.M. #13 Spike in 13" Maple, left of Sta. 106+75±, Elev. 266.65  
 B.M. #14 Spike in trunk 12" Butternut, right of Sta. 109+33, Elev. 257.28  
 B.M. #15 Spike in root 1 1/2" Elm, right of Sta. 116+52, Elev. 209.67

SERIES 5-477-D  
 SHEET 5 OF 13

WOOD GUARD RAIL REQUIRED			CABLE GUARD RAIL REQUIRED		
Stations	Left	Right	Stations	Left	Right
123+00-124+10	-	24 Lin.Ft.	132+30-133+00	70 Lin.Ft.	-
125+29-125+53	24 Lin.Ft.	-			
132+75-132+99	-	24			

CONCRETE CURB + GUTTER REQUIRED  
 STA 121+50-126+50 Right 500ft. 2'-0" 8" 32.4 500'

FED. ROAD DIST. NO.	STAT.	FED. AID PROJ. NO.	FISCAL YEAR	SHEET NO.	TOTAL SHEETS
9	VT	TT-D	1929	6	13

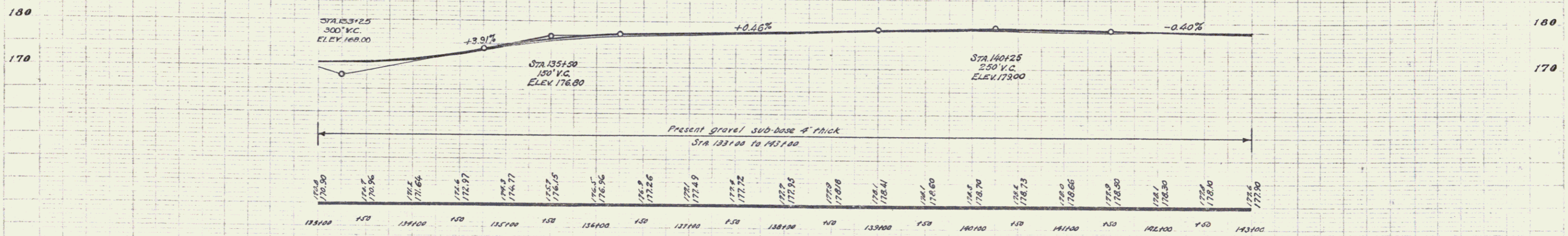
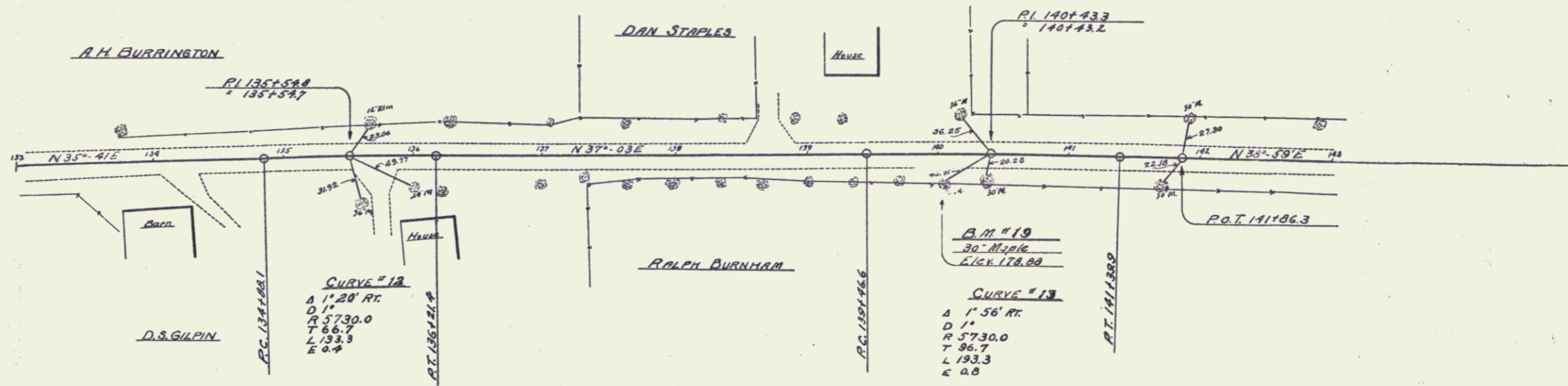


B.M. #16 South end concrete retaining wall left of Sta 123+05. Elev 185.81  
 B.M. #17 Spike in trunk of 18 Elm left of Sta 128+48. Elev 181.51  
 B.M. #18 Spike in roof of 11 Elm left of Sta 131+91. Elev 179.73

SERIES F # 77-D  
 SHEET 6 OF 13

CABLE GUARD RAIL REQUIRED  
 Stations Left Right  
 133100-133190 90 Lin. Ft. —

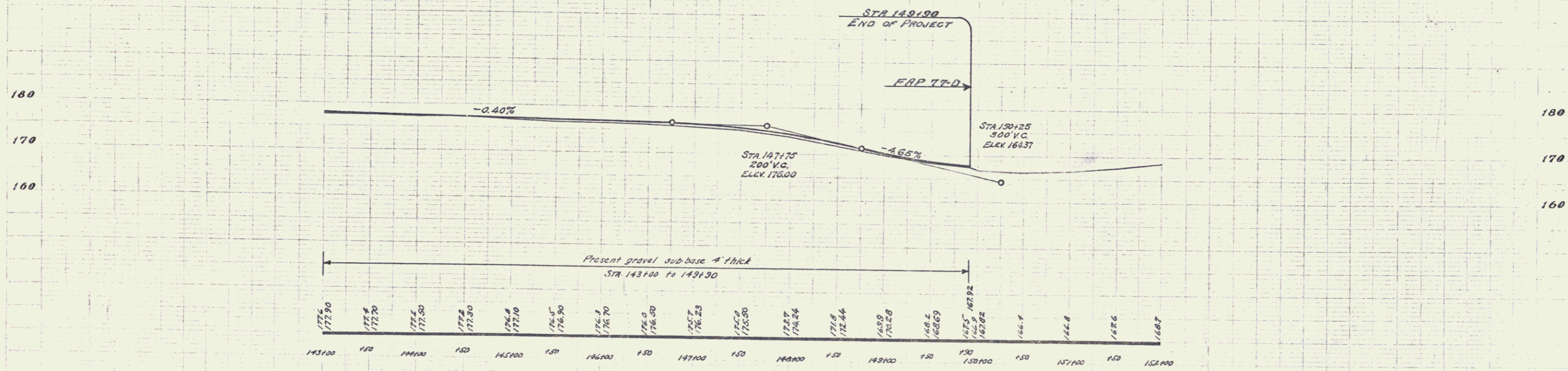
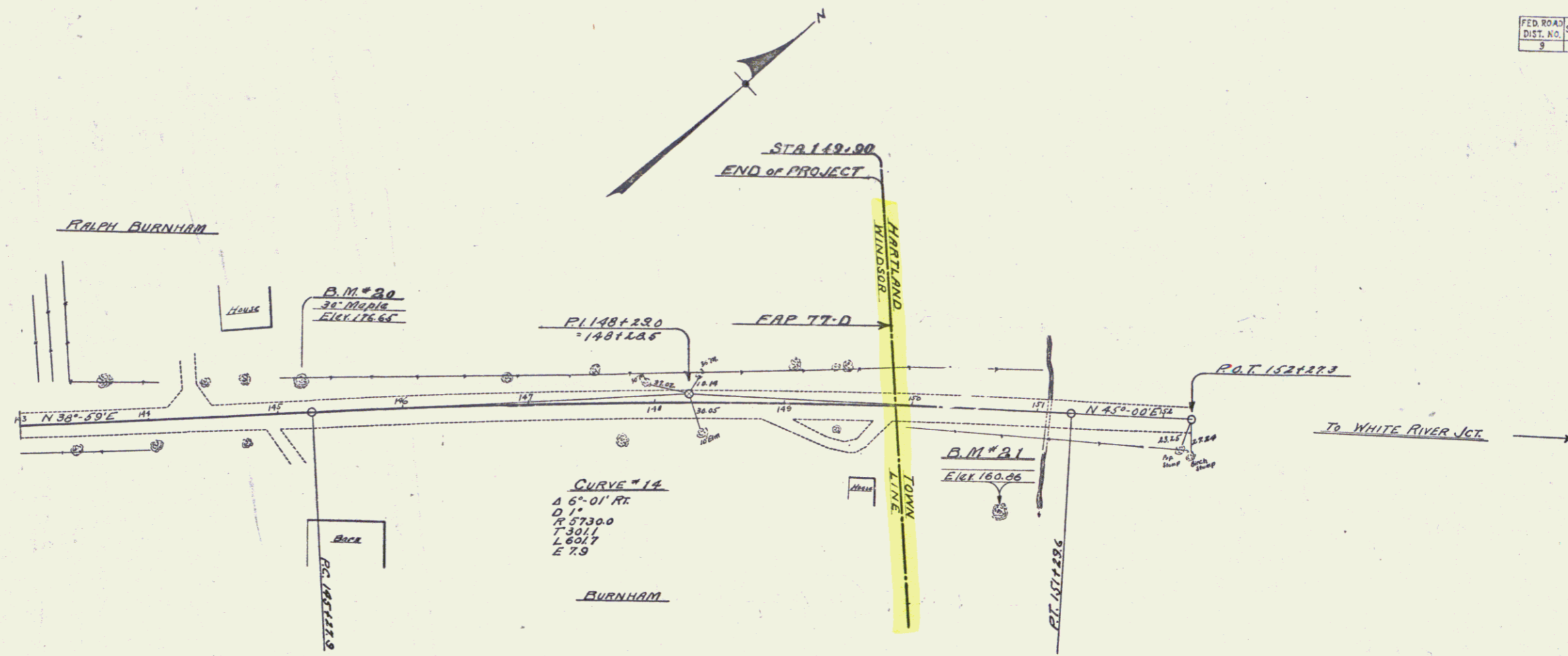
FED. ROAD DIST. NO.	STATE	FED. AID PROJ. NO.	FISCAL YEAR	SHEET NO.	TOTAL SHEETS
8	VT.	11-D	1959	7	13



B.M. #19 Spike in roof 30' Maple, right of Sta. 1401.03, Elev. 178.88

SERIES F #77-D  
 SHEET 7 OF 13

FED. ROAD DIST. NO.	STATE	FED. AID PROJ. NO.	FISCAL YEAR	SHEET NO.	TOTAL SHEETS
9	VT.	77-D	1929	8	13



B.M. 20 Spike in root 30" Maple, left of Sta 145+19, Elev 176.65  
 B.M. 21 Spike in root 16" Butternut, right of Sta 150+73, Elev 160.86

SERIES F # 77-D  
 SHEET 8 OF 13

6