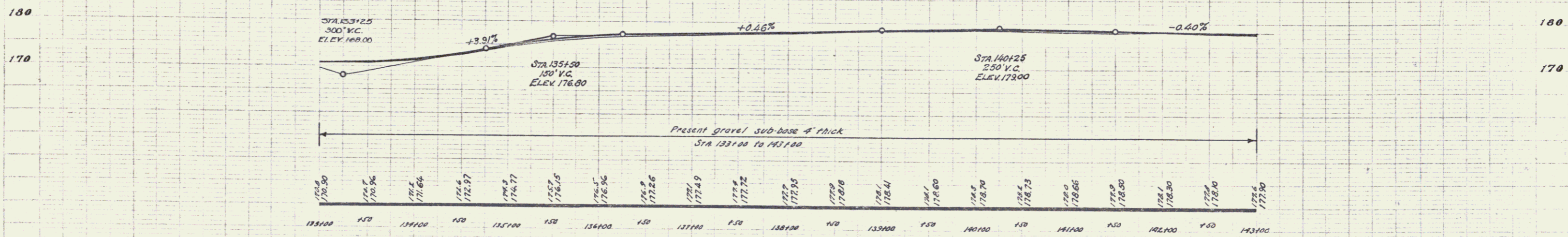
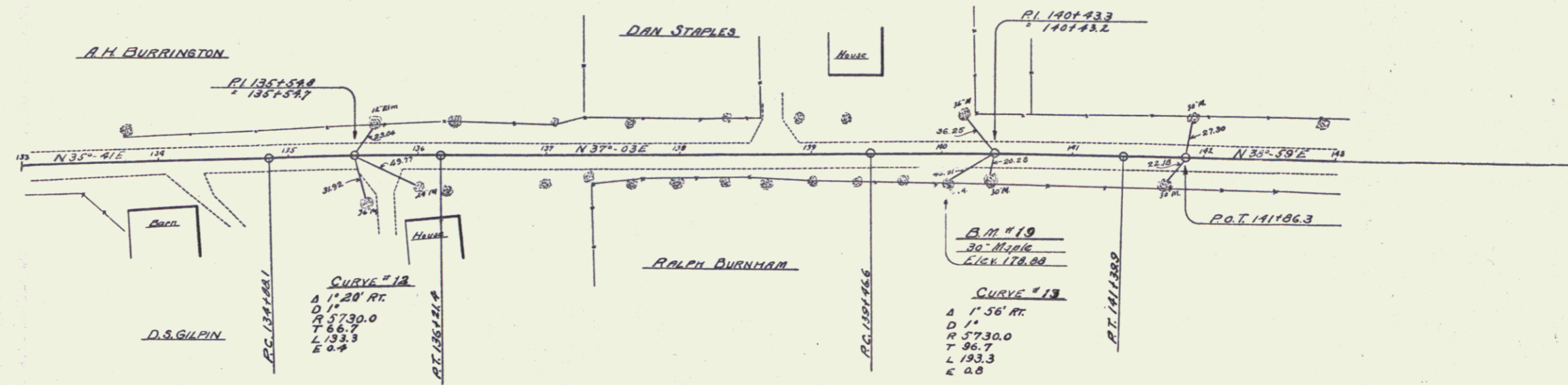


CABLE GUARD RAIL REQUIRED
 Stations Left Right
 133100-133190 90 Lin. Ft. —

FED. ROAD DIST. NO.	STATE	FED. AID PROJ. NO.	FISCAL YEAR	SHEET NO.	TOTAL SHEETS
8	VT.	11-D	1959	7	13



B.M. #19 Spike in roof 30' Maple, right of Sta. 1401.03, Elev. 178.86

SERIES F #77-D
 SHEET 7 OF 13