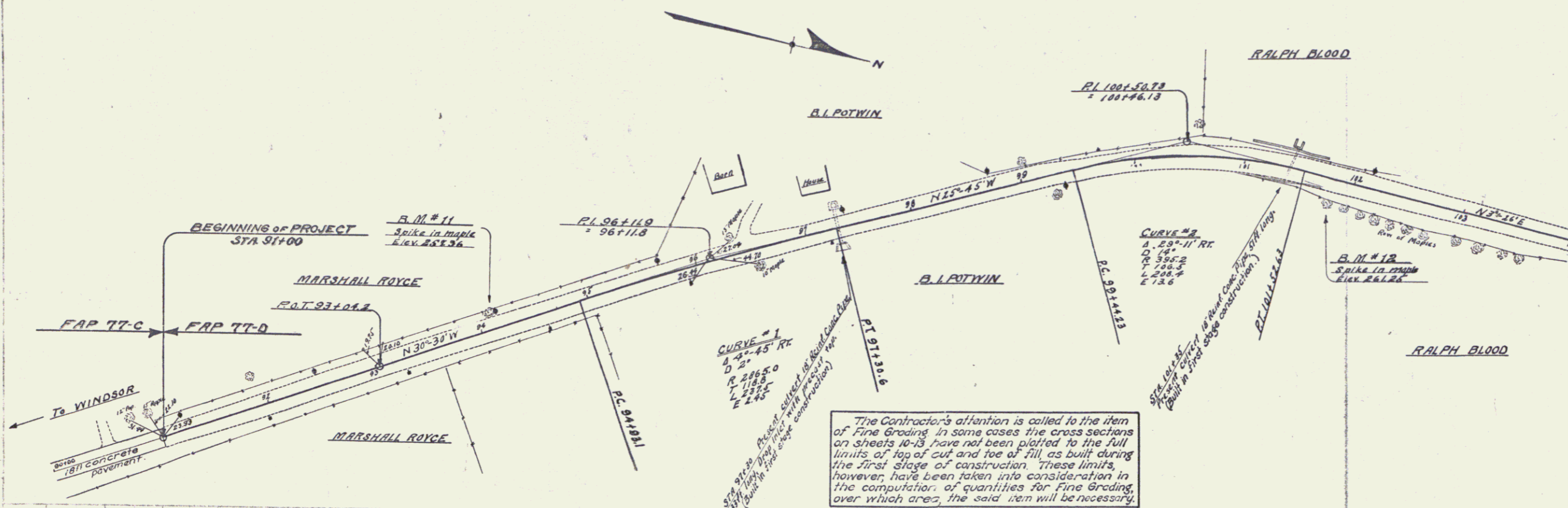
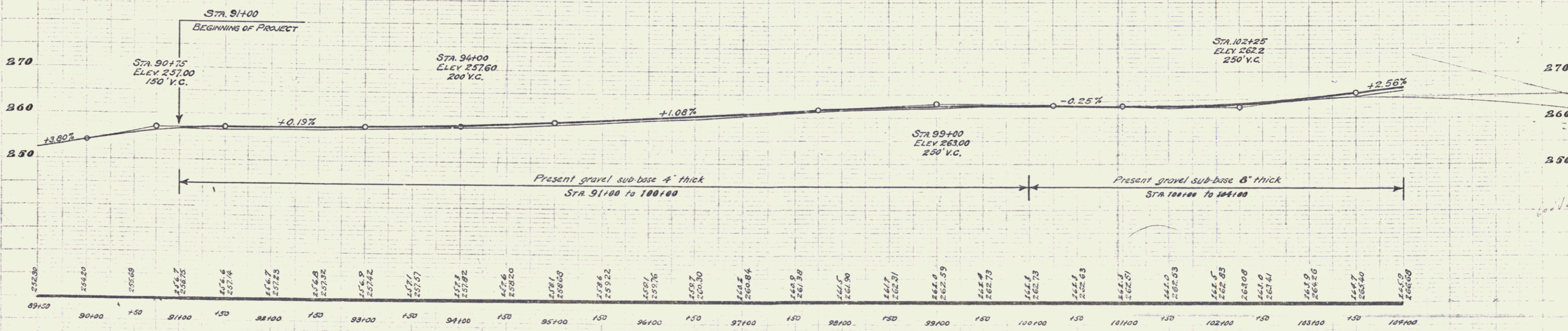


WOOD GUARD RAIL REQUIRED
 Stations Left Right
 97+18-97+42 24 Lin. Ft. 24 Lin. Ft.
 101+23-101+47 24 " " 24 " "

FED. ROAD DIST. NO.	STATE	FED. AID PROJ. NO.	FISCAL YEAR	SHEET NO.	TOTAL SHEETS
9	VT.	110	1959	4	13



The Contractor's attention is called to the item of Fine Grading. In some cases the cross sections on sheets 10-13 have not been plotted to the full limits of top of cut and toe of fill, as built during the first stage of construction. These limits, however, have been taken into consideration in the computation of quantities for Fine Grading, over which area, the said item will be necessary.



B.M. #11 Spike in 8' Maple, left of Sta. 97+11. Elev 257.36
 B.M. #12 Spike in root of 10' Maple, right of Sta. 101+76. Elev 261.25

SERIES F # 77-D
 SHEET 4 OF 13