

INDEX OF SHEETS

SHEET NO.	TITLE PAGE
1	TYPICAL CROSS-SECTION OF IMPROVEMENT-STAGE CONSTRUCTION-ONE COURSE
2	PLAN AND PROFILE STA. 91+00 TO 105+00 CEMENT CONCRETE PAVEMENT (TYPE B)
3	" " " " 105+00 TO 119+50 " " " "
4	" " " " 119+50 TO 133+00 " " " "
5	" " " " 133+00 TO 143+00 " " " "
6	" " " " 143+00 TO 149+90 " " " "
7	" " " " " " " " " " " "
8	STANDARD SHEET S-17
9	" " " " S-18
10	" " " " S-19
11	STANDARD CONCRETE BOX CULVERT-SPANS 5 TO 10 FEET
12	CROSS SECTIONS

FED. ROAD DIST. NO.	STATE	FED. AID PROJ. NO.	FISCAL YEAR	SHEET NO.	TOTAL SHEETS
9	VT.	FAP 77D	1928	1	21

STATE OF VERMONT
STATE HIGHWAY DEPARTMENT

PLAN AND PROFILE OF PROPOSED
STATE HIGHWAY

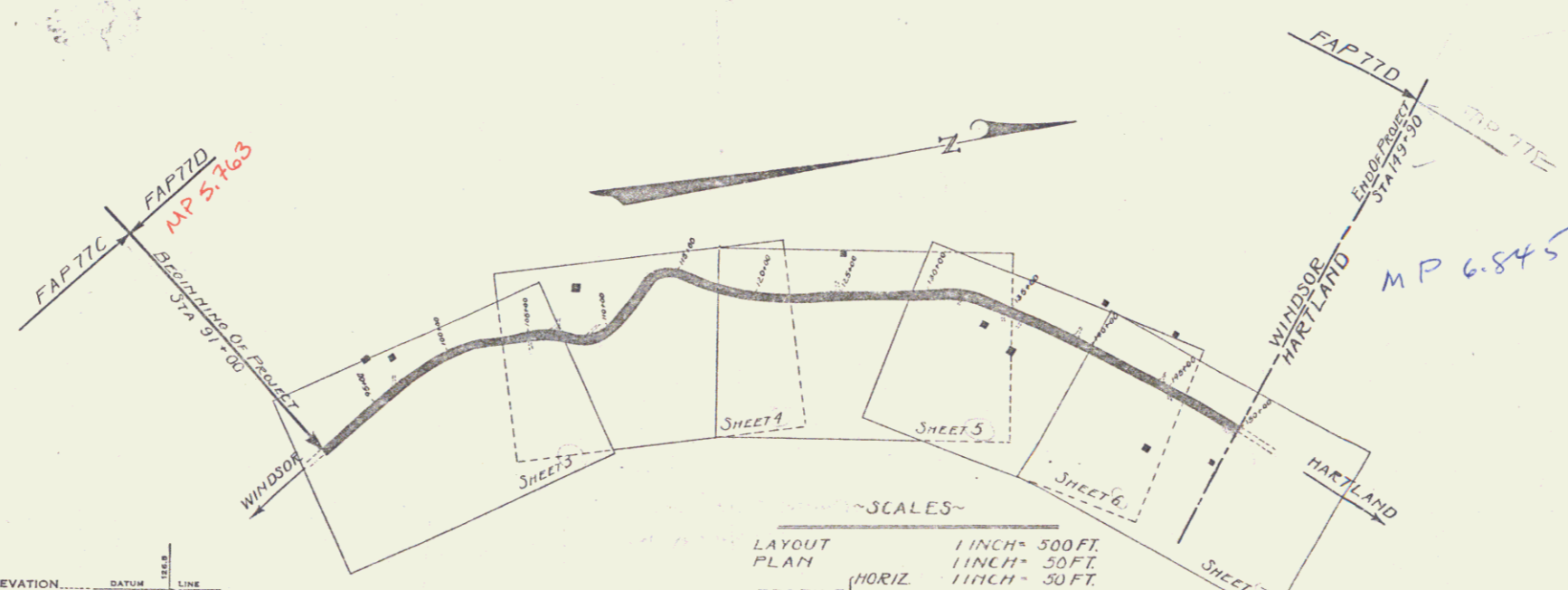
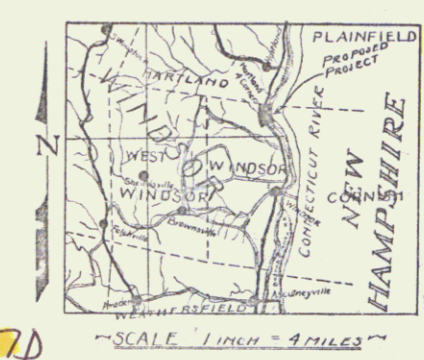
FEDERAL-AID PROJECT

TOWN OF WINDSOR

CONNECTICUT RIVER ROAD

FROM THE END OF FAP 77C NORTH 1.115 MILES
TO THE WINDSOR-HARTLAND TOWN LINE
LENGTH OF PROJECT 5890.0 FT. = 1.115 MILES

Route: US 5
Proj: FAP 77D
Pin # 99R 323



RIGHT-OF-WAY DIVISION
TOWN FILE
PERPETUAL
Town of US 5
(To Be Returned To R.O.W. Division)

APPROVED: Sept 17, 1928
H. E. ...
CHIEF ENGINEER
SUBMITTED BY ORDER OF THE STATE HIGHWAY BOARD
Sept 17, 1928
L. R. Bates
COMMISSIONER OF HIGHWAYS

CONVENTIONAL SIGNS

COUNTY LINE	GROUND ELEVATION
TOWN LINE	FENCE LINE
STONE WALL	UNFENCED PROPERTY
GUARD RAIL	RAILROAD
TRAVELED WAY	RETAINING WALL
CENTER LINE	SURVEY LINE
CULVERT	DROP INLET
TROLLEY POLE	POWER POLE
TELEPHONE POLE	TREES
HEDGE	

CURVE DATA

DEFLECTION ANGLE	Δ
DEGREE OF CURVE	D
RADIUS OF CURVE	R
TANGENT DISTANCE	T
LENGTH OF CURVE	L
EXTERNAL DISTANCE	E
POINT OF INTERSECTION	P. I.
POINT OF CURVE	P. C.
POINT OF TANGENT	P. T.
POINT ON TANGENT	P. O. T.

~SCALES~
LAYOUT 1 INCH = 500 FT.
PLAN 1 INCH = 30 FT.
PROFILE (HORIZ) 1 INCH = 30 FT.
VERT 1 INCH = 10 FT.
CROSS SECTIONS 1 INCH = 5 FT.

THIS PROJECT TO BE CONSTRUCTED IN ACCORDANCE WITH STANDARD SPECIFICATIONS ON FILE WITH THE U.S. BUREAU OF PUBLIC ROADS AS APPROVED JULY 7, 1926.

THESE PLANS SUBJECT TO SUCH REVISIONS AS MAY BE REQUIRED BY THE BUREAU OF PUBLIC ROADS OR THE CHIEF ENGINEER.

SERIES FAP NO. 77D FILED
SHEET 1 OF 21

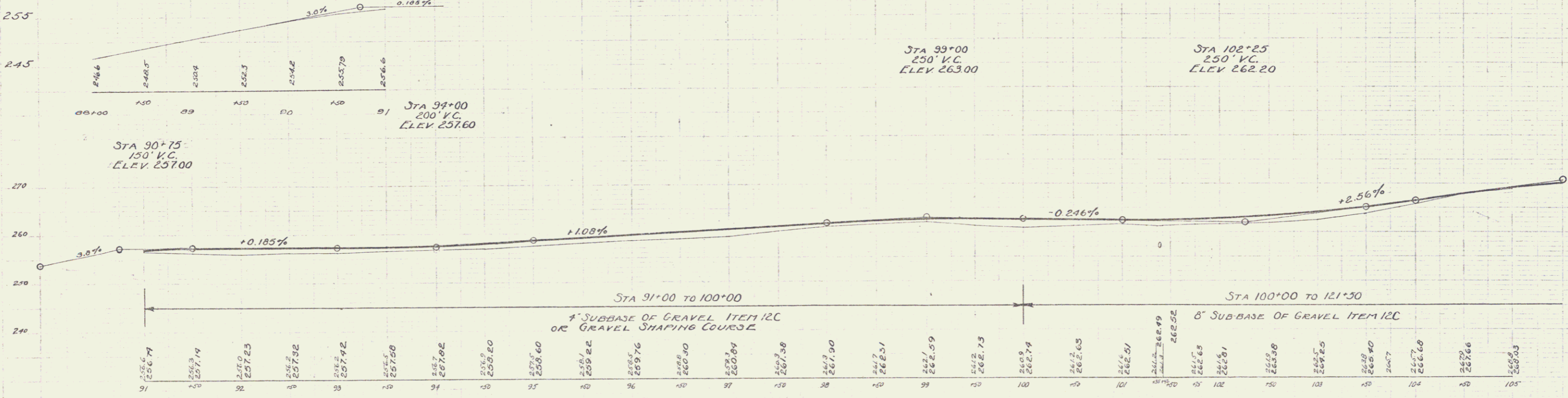
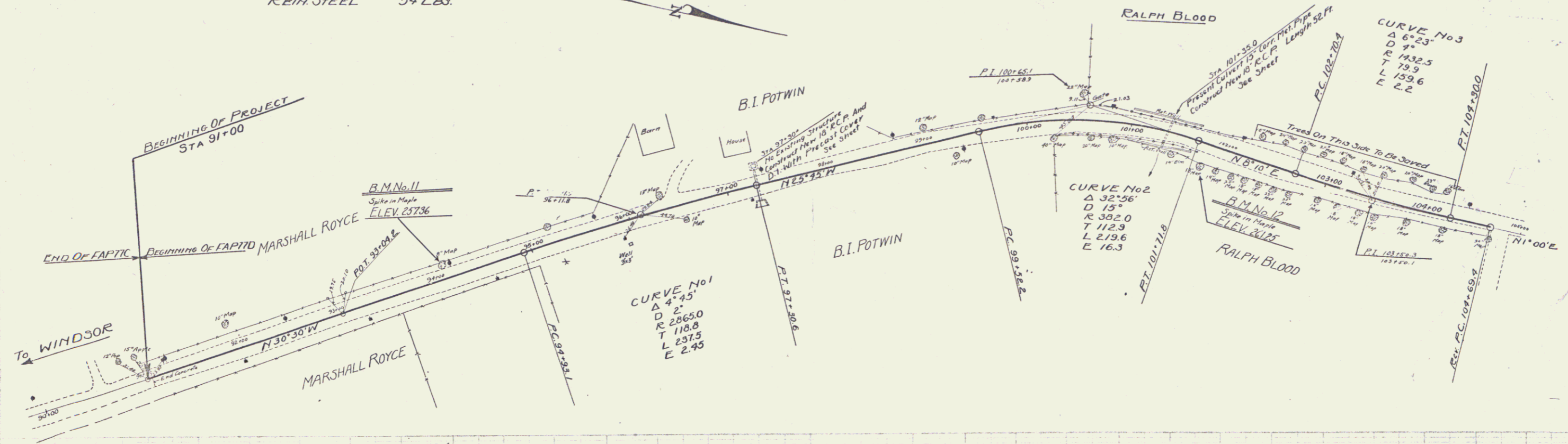
DIST. # 4 Plans

NEW CULVERT REQUIRED
 STA 97+30* CONSTRUCT NEW 18" R.C.P.
 AND DI. WITH PRECAST COVER LENGTH 32 FT.
 REIN. CONCRETE CLASS A (1:2:4) 25 Cu Yds.
 REIN. STEEL 125 LBS.
 STA 101+350 CONSTRUCT NEW 18" R.C.P.
 LENGTH 52 FT.
 REIN. CONCRETE CLASS A (1:2:4) 19 Cu Yds.
 REIN. STEEL 54 LBS.

"WOOD GUARD RAIL REQUIRED"
 -ON LEFT-
 STA 97+18 TO STA 97+92 LENGTH 24 FT.
 -ON RIGHT-
 STA 97+18 TO STA 97+92 " 24 FT.
 TOTAL ON SHEET 48 FT.

"CABLE GUARD RAIL REQUIRED"
 -ON LEFT-
 STA 101+69 TO STA 101+69 LENGTH 69 FT.
 -ON RIGHT-
 STA 100+50 TO STA 101+62 " 112 FT.
 TOTAL ON SHEET 176 FT.

FED. ROAD DIST. NO.	STATE	FED. AID PROJ. NO.	FISCAL YEAR	SHEET NO.	TOTAL SHEETS
	VI.	77D	1928	3	21



B.M. No. 11 - Spike in 8" Maple left of STA. 94+11 - ELEV. 257.36
 B.M. No. 12 - Spike in root 18" Maple right of STA. 101+18 - ELEV. 261.25

SERIES No. F 77D
 SHEET 3 OF 21

2

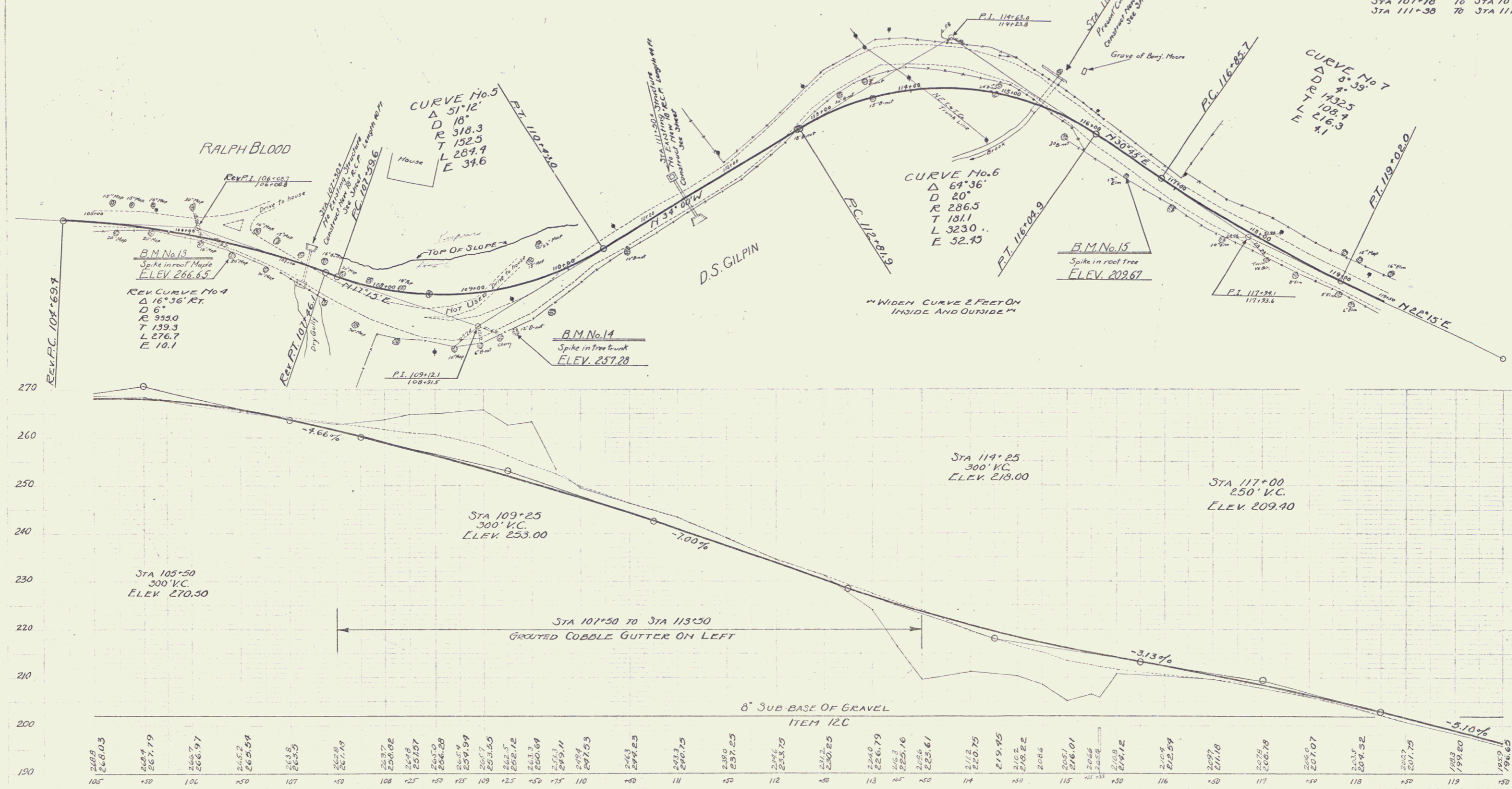
"NEW CULVERTS REQUIRED"
 STA 107+50 CONSTRUCT NEW 18" REINFORCED CONCRETE PIPE LENGTH 90 FT.
 REINFORCED CONCRETE CLASS A (1:2:4) 1.9 CU.YDS.
 REINFORCING STEEL 39 LBS.
 STA 111+50 CONSTRUCT NEW 18" REIN. CONCRETE PIPE WITH D. I. LENGTH 99 FT.
 REINFORCED CONCRETE CLASS A (1:2:4) 2.9 CU.YDS.
 REINFORCING STEEL 123 LBS.
 STA 113+33 CONSTRUCT NEW 5'x5' BOX CULVERT
 REINFORCED CONCRETE CLASS A (1:2:4) 32.7 CU.YDS.
 REINFORCING STEEL 1091 LBS.

"NEW CABLE GUARD RAIL REQUIRED"
 - ON RIGHT -
 STA 110+25 TO STA 111+21 LENGTH 96 FT.
 STA 112+25 TO STA 113+23 " 368 FT.
 - ON LEFT -
 STA 113+75 TO STA 119+31 " 56 FT.
 TOTAL ON SHEET 520 FT.

"GROUTED COBBLE GUTTER REQUIRED"
 STA 107+50 TO STA 113+50 ON LEFT

"NEW WOOD GUARD RAIL REQUIRED"
 - ON LEFT -
 STA 107+18 TO STA 107+42 LENGTH 24 FT.
 STA 111+38 TO STA 111+62 " 24 FT.
 STA 113+21 TO STA 113+45 " 24 FT.
 - ON RIGHT -
 STA 107+18 TO STA 107+42 " 24 FT.
 STA 111+38 TO STA 111+62 " 24 FT.
 TOTAL ON SHEET 120 FT.

DIST. NO.	STATE	FED. AID	FISCAL YEAR	SHEET NO.	TOTAL SHEETS
8	VT.	77D	1928	4	21



B.M. No. 13 ~ Spike in root 21' Maple to right Sta. 106+49 ~ ELEV. 266.65
 B.M. No. 14 ~ Spike in trunk 12' Butternut to right Sta. 109+33 ~ ELEV. 257.28
 B.M. No. 15 ~ Spike in root 12' Elm to right Sta. 116+52 ~ ELEV. 209.67

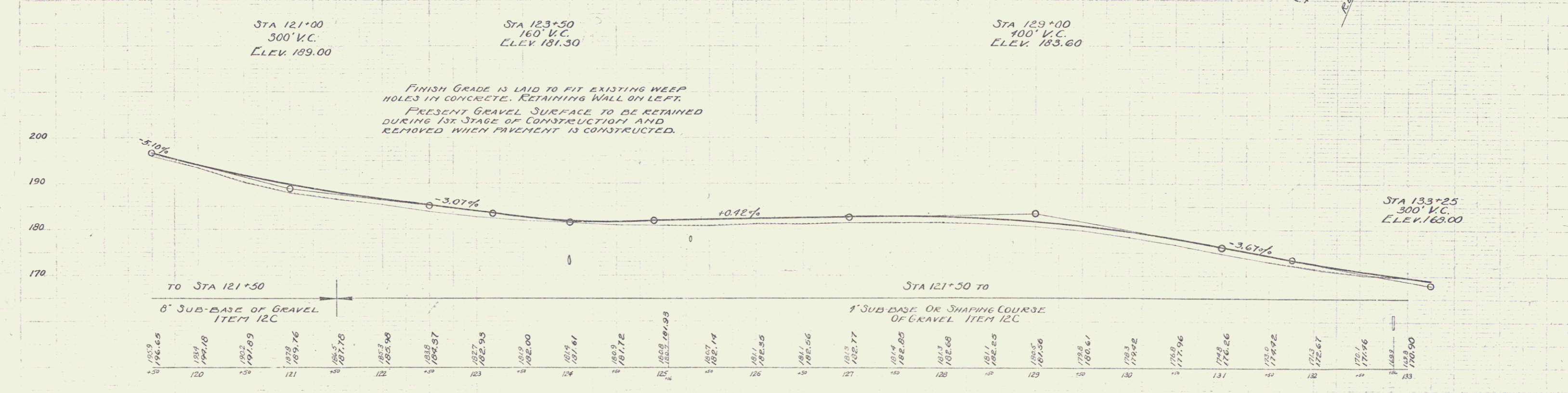
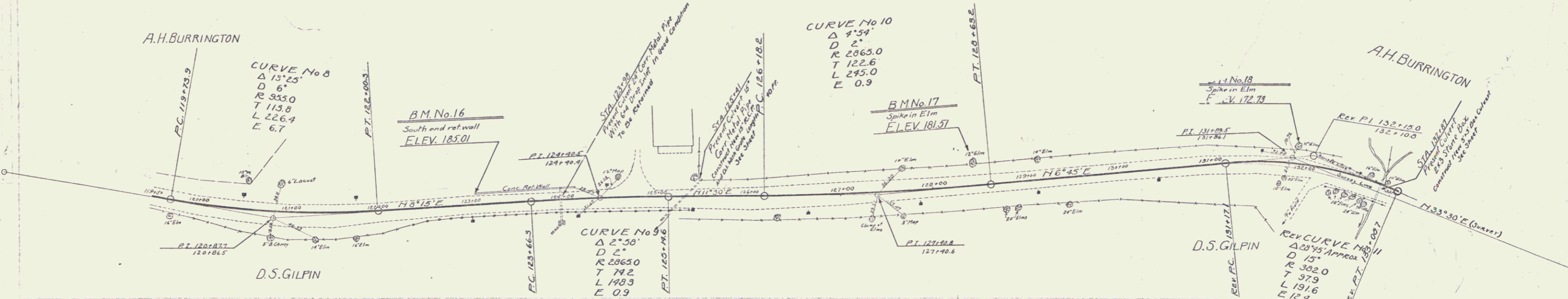
SERIES NO. F 71D
 SHEET 4 OF 21

"NEW CULVERT REQUIRED"
 STA 125+41 CONSTRUCT NEW 15" R.C.P. AND D.I. WITH GRATE LENGTH 40 FT.
 REIN. CONCRETE CLASS A (1:2:4) 1.2 Cu. Yds.
 REIN. CONCRETE CLASS B (1:2:4) 1.6 Cu. Yds.
 REIN. STEEL 31 Lbs.
 STA 132+87 CONSTRUCT NEW 3'x3' BOX CULVERT
 REIN. CONCRETE CLASS A (1:2:4) 23.7 Cu. Yds.
 REIN. STEEL 1362 Lbs.

"NEW WOOD GUARD RAIL REQUIRED"
 -ON LEFT-
 STA 123+86 TO STA 124+10 LENGTH 24 FT.
 STA 125+50 TO STA 125+55 - 24 FT.
 TOTAL ON STREET 48 FT.

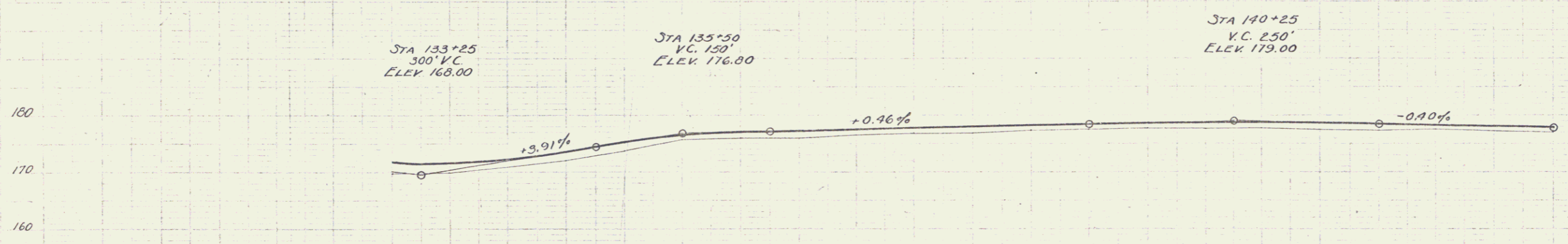
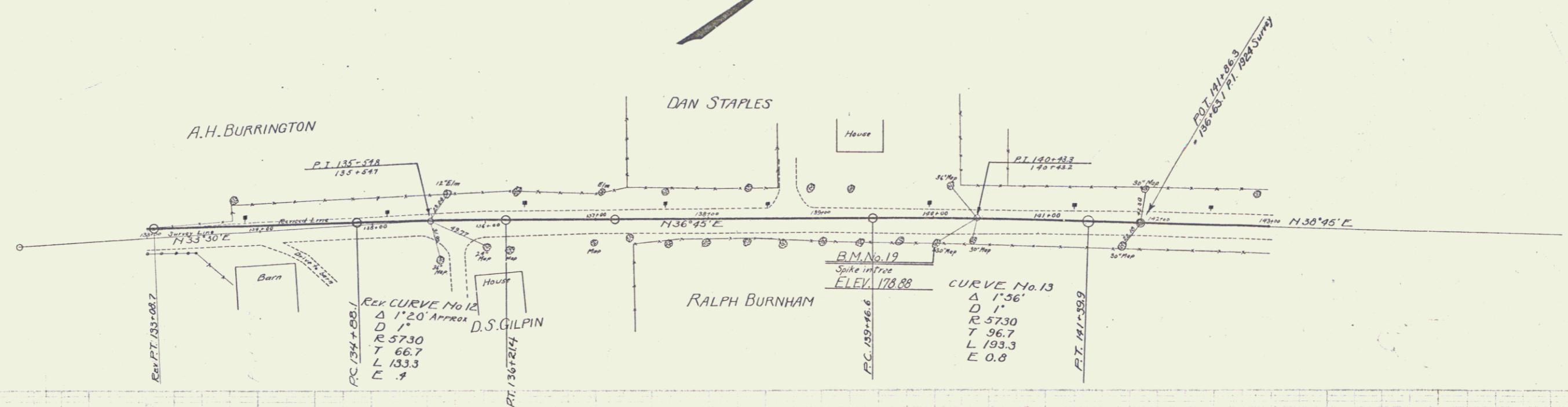
"NEW CABLE GUARD RAIL REQUIRED"
 -ON RIGHT-
 STA 122+25 TO STA 125+53 LENGTH 328 FT.
 STA 130+50 TO STA 131+88 - 136 FT.
 STA 132+30 TO STA 133+10 - 80 FT.
 -ON LEFT-
 STA 132+30 TO STA 133+90 - 160 FT.
 TOTAL ON SHEET 704 FT.

FED. ROAD DIST. NO.	STATE	FED. AID FISCAL YEAR	TOTAL SHEETS
77 D	1928	5	7



B.M. No. 16 - South end concrete retaining wall at left STA. 123+05 - ELEV. 185.01
 B.M. No. 17 - Spike in trunk 12" Elm at left STA. 128+4 - ELEV. 181.51
 B.M. No. 18 - Spike in root 11" Elm at left STA. 131+91 - ELEV. 172.73

SERIES NO. F 77 D
 SHEET 5 OF 7

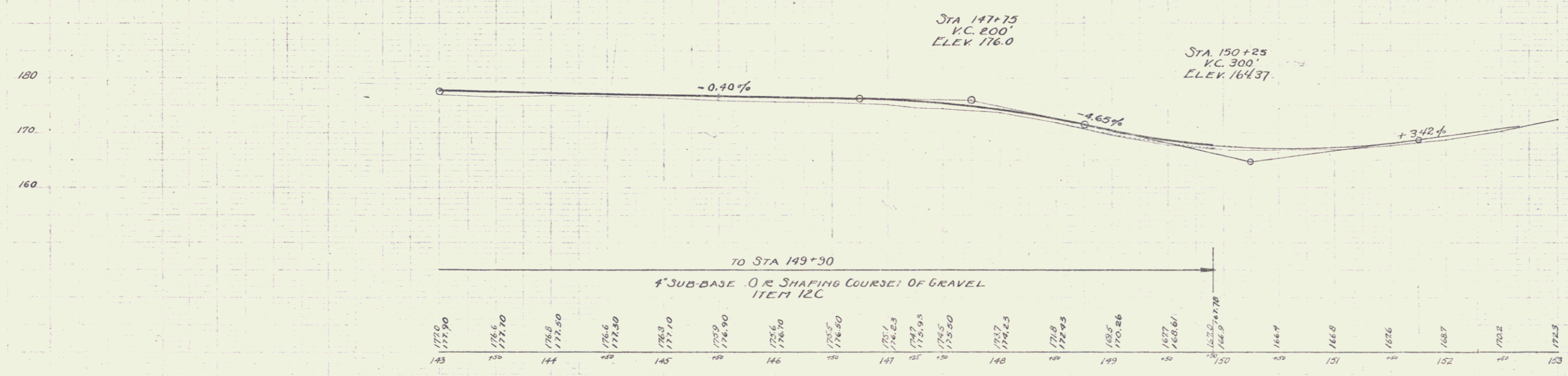
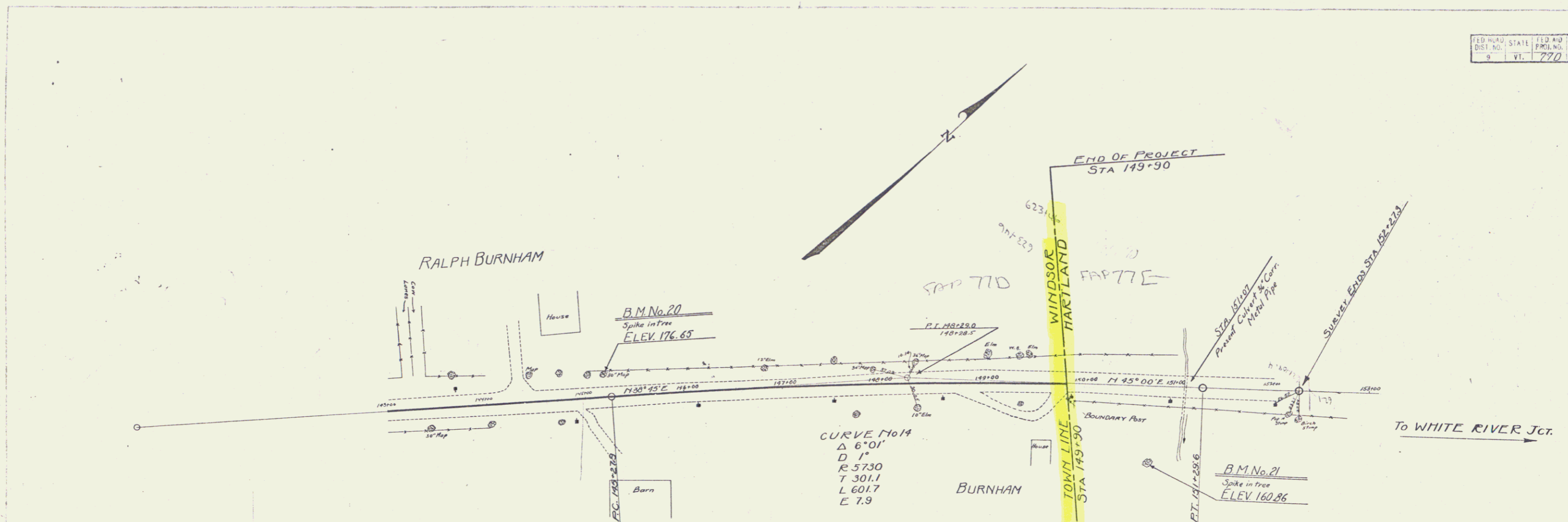


4" SUB-BASE OR SHAPING COURSE OF GRAVEL
ITEM 12C

133+00	133+05	134	135	136	137	138	139	140	141	142	143	144	145	146	147	148	
168.90	170.96	171.65	172.0	173.7	175.7	176.15	176.96	178.0	178.41	178.60	178.71	178.74	178.66	178.50	178.30	178.10	177.90

B.M. No 19 ~ Spike in 30" Maple at right STA. 140+02 ~ ELEV. 178.88

5



B.M. No. 20 ~ Spike in root 30" Maple at left of STA 145+19 ~ ELEV. 176.65
 B.M. No. 21 ~ Spike in root 18" Bullerbut at right STA 150+72 ~ ELEV. 160.86

6