

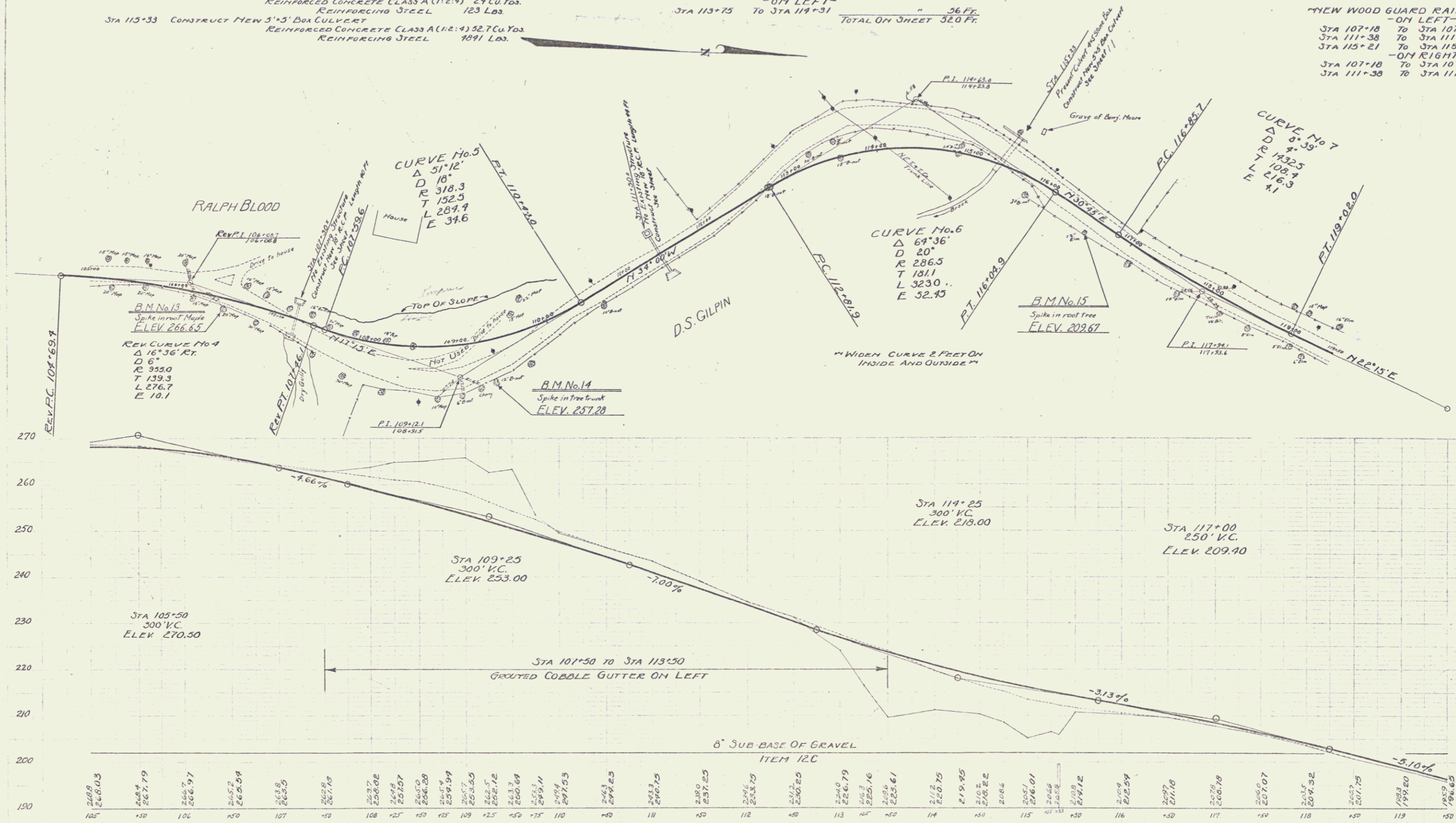
"NEW CULVERTS REQUIRED"
 STA 107+50 CONSTRUCT NEW 18" REINFORCED CONCRETE PIPE LENGTH 90 FT.
 REINFORCED CONCRETE CLASS A (1:2:4) 1.9 CU.YDS.
 REINFORCING STEEL 39 LBS.
 STA 111+50 CONSTRUCT NEW 18" REIN. CONCRETE PIPE WITH D. I. LENGTH 99 FT.
 REINFORCED CONCRETE CLASS A (1:2:4) 2.9 CU.YDS.
 REINFORCING STEEL 123 LBS.
 STA 113+33 CONSTRUCT NEW 5'x5' BOX CULVERT
 REINFORCED CONCRETE CLASS A (1:2:4) 32.7 CU.YDS.
 REINFORCING STEEL 1091 LBS.

"NEW CABLE GUARD RAIL REQUIRED"
 - ON RIGHT -
 STA 110+25 TO STA 111+21 LENGTH 96 FT.
 STA 112+25 TO STA 113+23 " 368 FT.
 - ON LEFT -
 STA 113+75 TO STA 119+31 " 56 FT.
 TOTAL ON SHEET 520 FT.

"GROUTED COBBLE GUTTER REQUIRED"
 STA 107+50 TO STA 113+50 ON LEFT

"NEW WOOD GUARD RAIL REQUIRED"
 - ON LEFT -
 STA 107+18 TO STA 107+42 LENGTH 24 FT.
 STA 111+38 TO STA 111+62 " 24 FT.
 STA 113+21 TO STA 113+45 " 24 FT.
 - ON RIGHT -
 STA 107+18 TO STA 107+42 " 24 FT.
 STA 111+38 TO STA 111+62 " 24 FT.
 TOTAL ON SHEET 120 FT.

DIST. NO.	STATE	FED. AID	FISCAL YEAR	SHEET NO.	TOTAL SHEETS
8	VT.	77D	1928	4	21



B.M. No. 13 - Spike in root 21' Maple to right Sta. 106+49 - ELEV. 266.65
 B.M. No. 14 - Spike in trunk 12' Butternut to right Sta. 109+33 - ELEV. 257.28
 B.M. No. 15 - Spike in root 12' Elm to right Sta. 116+52 - ELEV. 209.67

SERIES NO. F 71D
 SHEET 4 OF 21