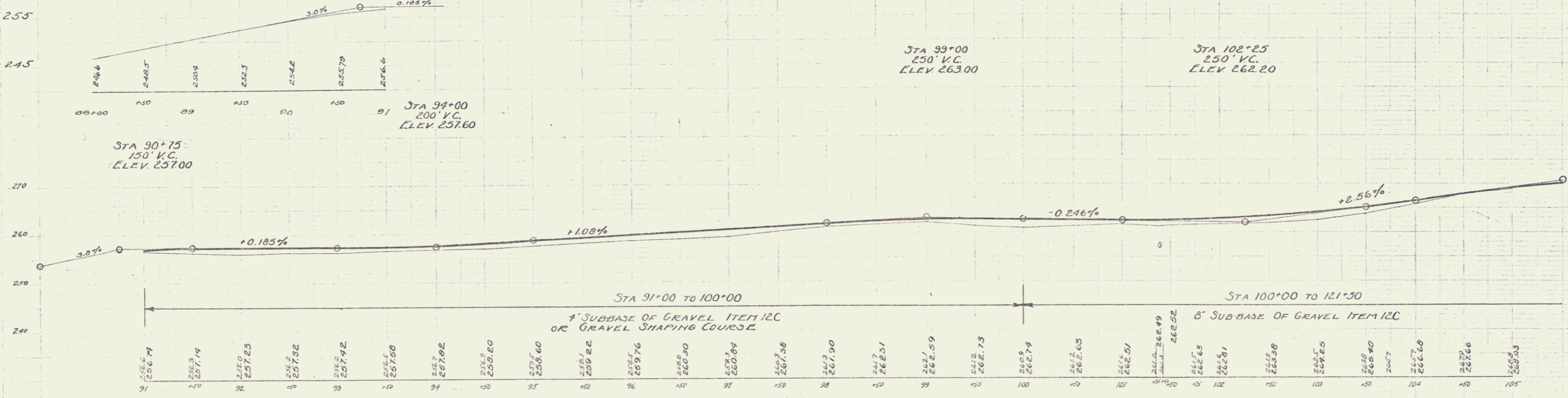
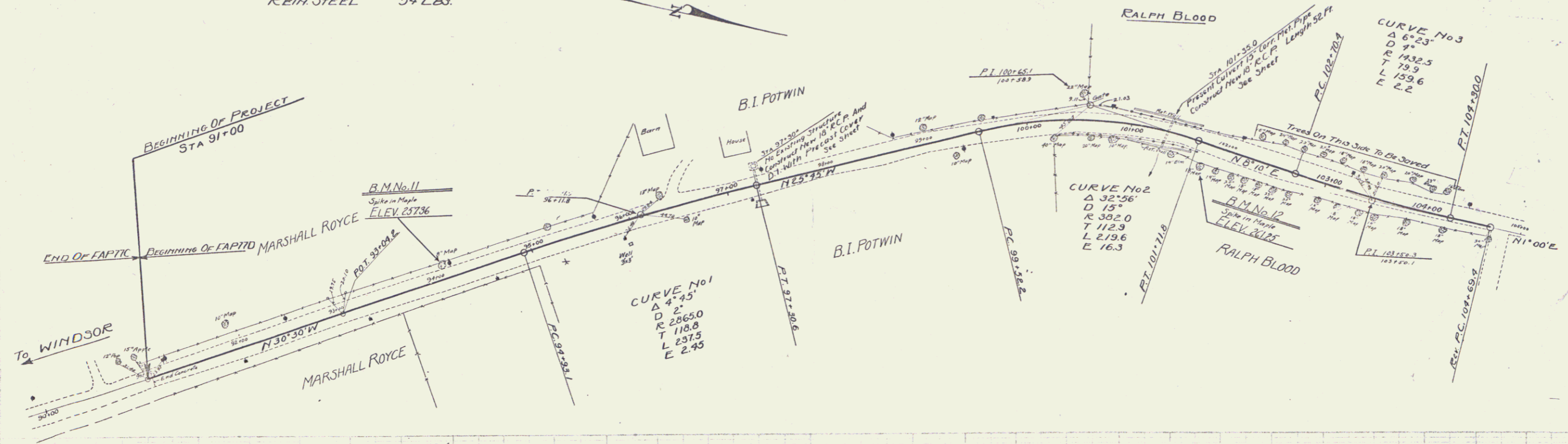


NEW CULVERT REQUIRED
 STA 97+30* CONSTRUCT NEW 18" R.C.P.
 AND DI. WITH PRECAST COVER LENGTH 32 FT.
 REIN. CONCRETE CLASS A (1:2:4) 25 Cu Yds.
 REIN. STEEL 125 LBS.
 STA 101+350 CONSTRUCT NEW 18" R.C.P.
 LENGTH 52 FT.
 REIN. CONCRETE CLASS A (1:2:4) 19 Cu Yds.
 REIN. STEEL 54 LBS.

"WOOD GUARD RAIL REQUIRED"
 -ON LEFT-
 STA 97+18 TO STA 97+92 LENGTH 24 FT.
 -ON RIGHT-
 STA 97+18 TO STA 97+92 " 24 FT.
 TOTAL ON SHEET 48 FT.

"CABLE GUARD RAIL REQUIRED"
 -ON LEFT-
 STA 101+69 TO STA 101+69 LENGTH 69 FT.
 -ON RIGHT-
 STA 100+50 TO STA 101+62 " 112 FT.
 TOTAL ON SHEET 176 FT.

FED. ROAD DIST. NO.	STATE	FED. AID PROJ. NO.	FISCAL YEAR	SHEET NO.	TOTAL SHEETS
	VI.	77D	1928	3	21



B.M. No. 11 - Spike in 8" Maple left of STA. 94+11 - ELEV. 257.36
 B.M. No. 12 - Spike in root 18" Maple right of STA. 101+18 - ELEV. 261.25

SERIES No. F 77D
 SHEET 3 OF 21

2