

INDEX OF SHEETS

SHEET NO.	TITLE PAGE
2	TYPICAL CROSS-SECTION OF IMPROVEMENT
3	PLAN AND PROFILE STA. 35+00-48+00
4	" " " " 48+00-64+00
5	" " " " 64+00-80+00
6	" " " " 80+00-94+50
7-24	CROSS SECTIONS

PROJECT NO.	STATE	SECTION	DATE	SCALE
9	Vt.	77C	1927	1/24

STATE OF VERMONT
STATE HIGHWAY DEPARTMENT

PLAN AND PROFILE OF PROPOSED
STATE HIGHWAY
FEDERAL AID PROJECT

TOWN OF WINDSOR

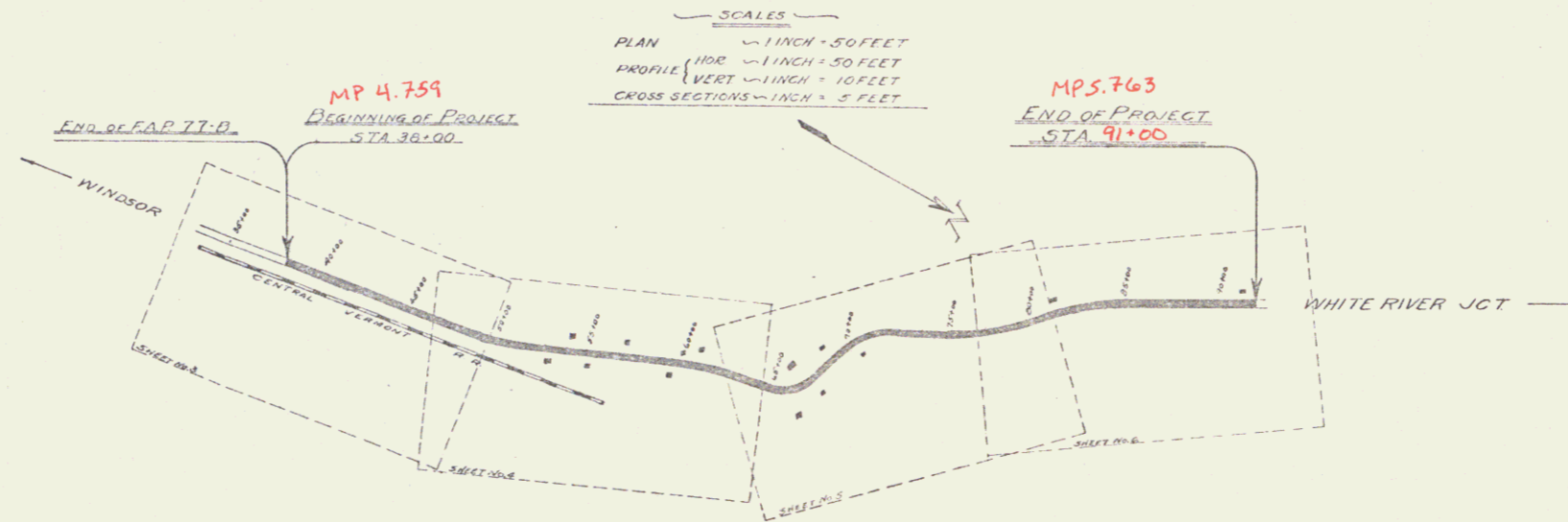
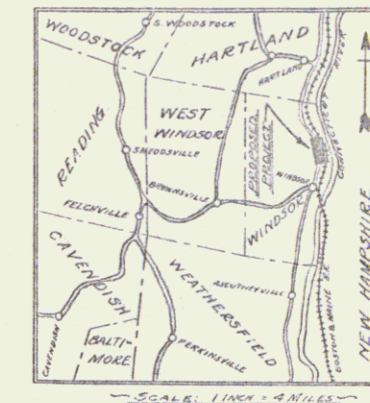
CONNECTICUT RIVER ROAD

BEGINNING AT END OF F.A. NO. 77-B, AND
EXTENDING NORTHERLY 1.006 MILES.

Route: US5

Project: F 77C

Pin # 99R 319



RIGHT-OF-WAY DIVISION
TOWN FILE
PERPETUAL
Town of US5
(To Be Returned To R.O.W. Division)

APPROVED: April 19, 1927
H. DeGroot
CHIEF ENGINEER
SUBMITTED BY ORDER OF THE STATE HIGHWAY BOARD
April 19, 1927
A. B. Bull
COMMISSIONER OF HIGHWAYS

CONVENTIONAL SIGNS

COUNTY LINE	-----	GROUND ELEVATION	DATUM	LINE
TOWN LINE	-----	GRADE ELEVATION	DATUM	LINE
FENCE LINE	-----			
STONE WALL	-----			
UNFENCED PROPERTY	-----			
GUARD RAIL	-----			
TRAVELED WAY	-----			
RAILROAD	-----			
RETAINING WALL	-----	CURVE DATA		
CENTER LINE	-----	DEFLECTION ANGLE	Δ	
SURVEY LINE	-----	DEGREE OF CURVE	D.	
CULVERT	-----	RADIUS OF CURVE	R.	
DROP INLET	-----	TANGENT DISTANCE	T.	
TROLLEY POLE	-----	LENGTH OF CURVE	L.	
POWER POLE	-----	EXTERNAL DISTANCE	E.	
TELEPHONE POLE	-----	POINT OF INTERSECTION	P.I.	
TREES	-----	POINT OF CURVE	P.C.	
HEDGE	-----	POINT OF TANGENT	P.T.	

LAYOUT
SCALE: 1 INCH = 200 FEET

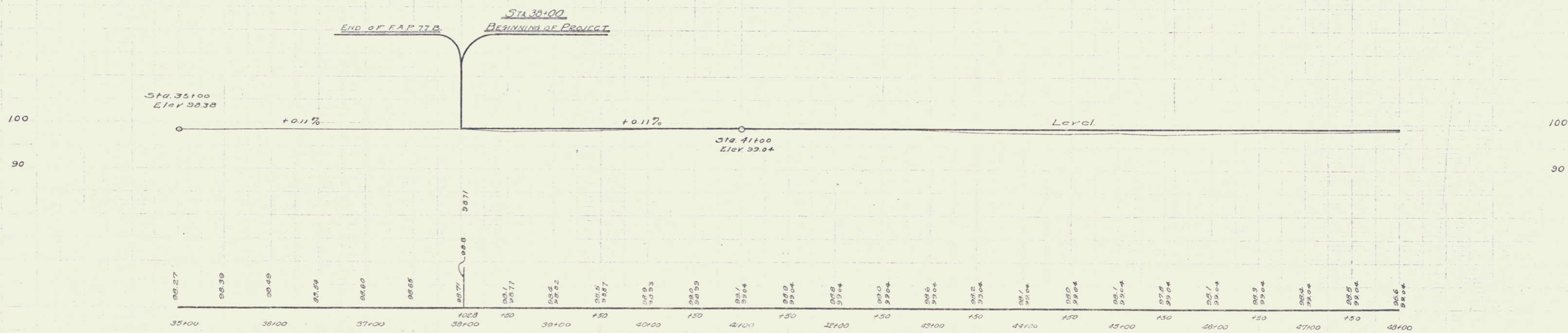
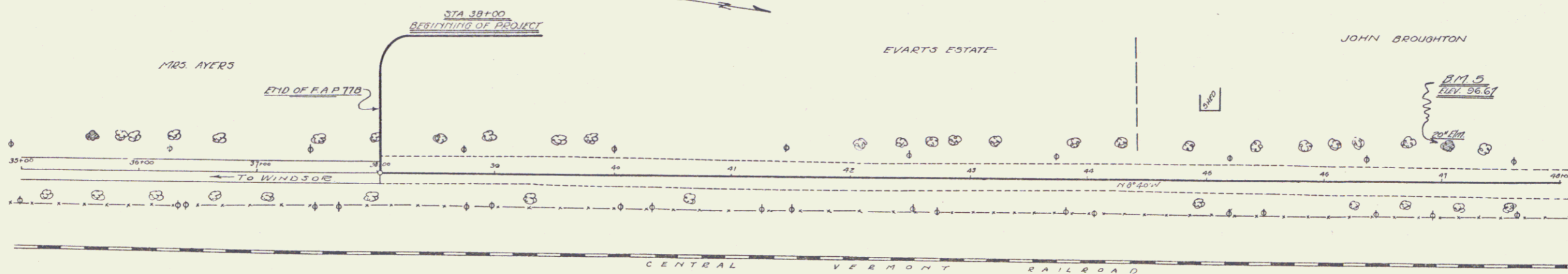
THESE PLANS SUBJECT TO SUCH REVISIONS AS MAY BE REQUIRED
BY THE BUREAU OF PUBLIC ROADS OR THE CHIEF ENGINEER.

RECOMMENDED: []
DISTRICT ENGINEER
BUREAU OF PUBLIC ROADS
RECOMMENDED FOR APPROVAL: []
CHIEF ENGINEER
APPROVED: []
DIRECTOR - BUREAU OF PUBLIC ROADS

SERIES F No FILED
SHEET 1 OF 24

DIST. # 4 Plans

LD. ROAD DIST. NO.	STATE	FED. AID PROJ. NO.	FISCAL YEAR	SHEET NO.	TOTAL SHEETS
9	VT	77C	1927	3	



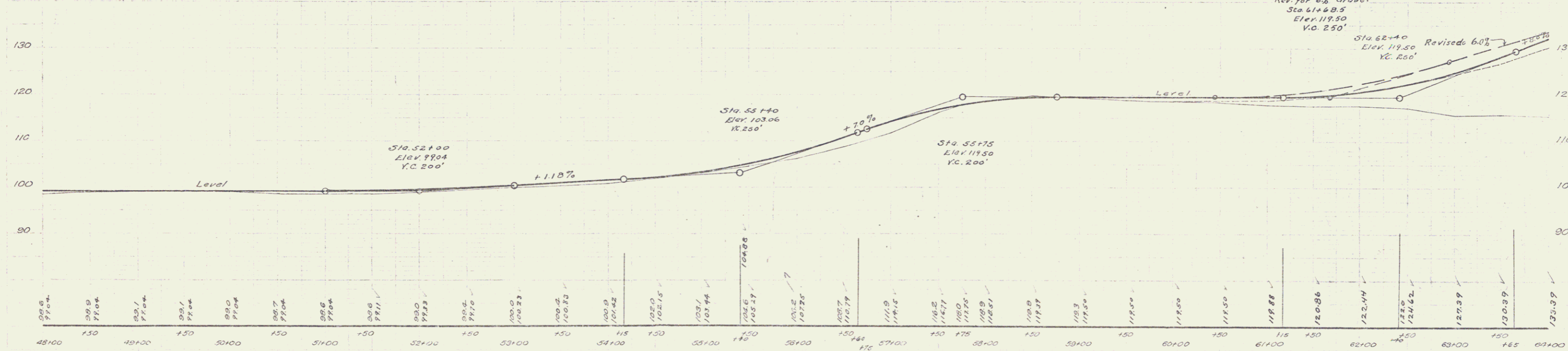
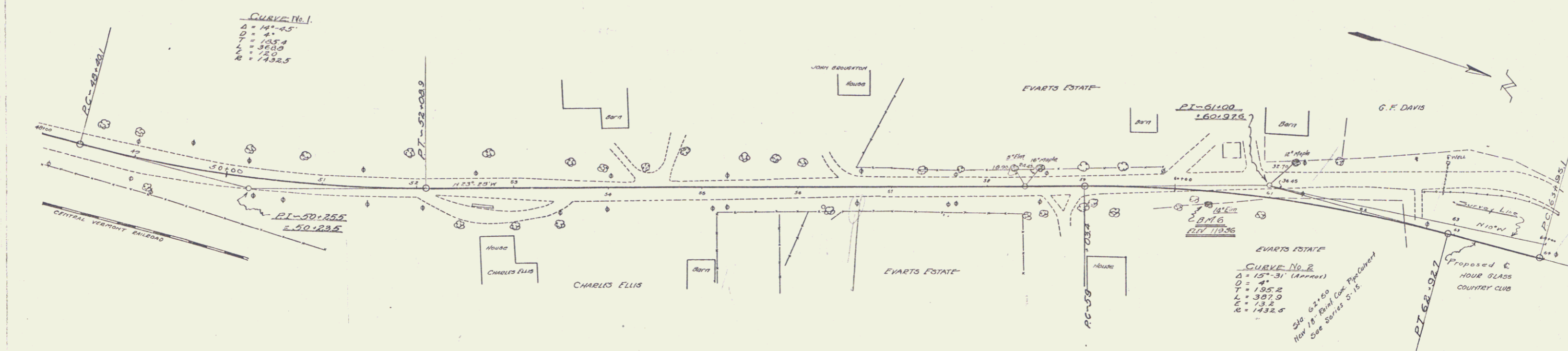
S.M. 5 - SPIKE IN 20' DIA. AT STA. 47+00 - ELEV. 96.67 - (ELEV. 103.32 AT END OF PART B)

Series F. No. 77C
Sheet 3 of 3

CABLE GUARD RAIL REQUIRED.
 RIGHT
 STA 62+38 to STA 64+00 = 162 Ft.
 LEFT
 " 62+38 to STA 64+00 = 162 "
 TOTAL THIS SHEET: 324 "

NEW GULVERT REQUIRED.
 STA. 62+50 - 18" REINF CONC PIPE - LENGTH 36 FT.
 CONC. CLASS A, 1'-2-4", - 13 C.Yds.
 REINFORCING STEEL 60 Lbs.

FED. ROAD DIST. NO.	STATE	FED. AID PROJ. NO.	FISCAL YEAR	SHEET NO.	TOTAL SHEETS
9	VT	77C	1927	4	



BM 6 - 14" Elm. 18 ft. RIGHT OF STA. 61+35 - Elev. 110.36 (SEE 127.21 of EAST 725 SHEET)

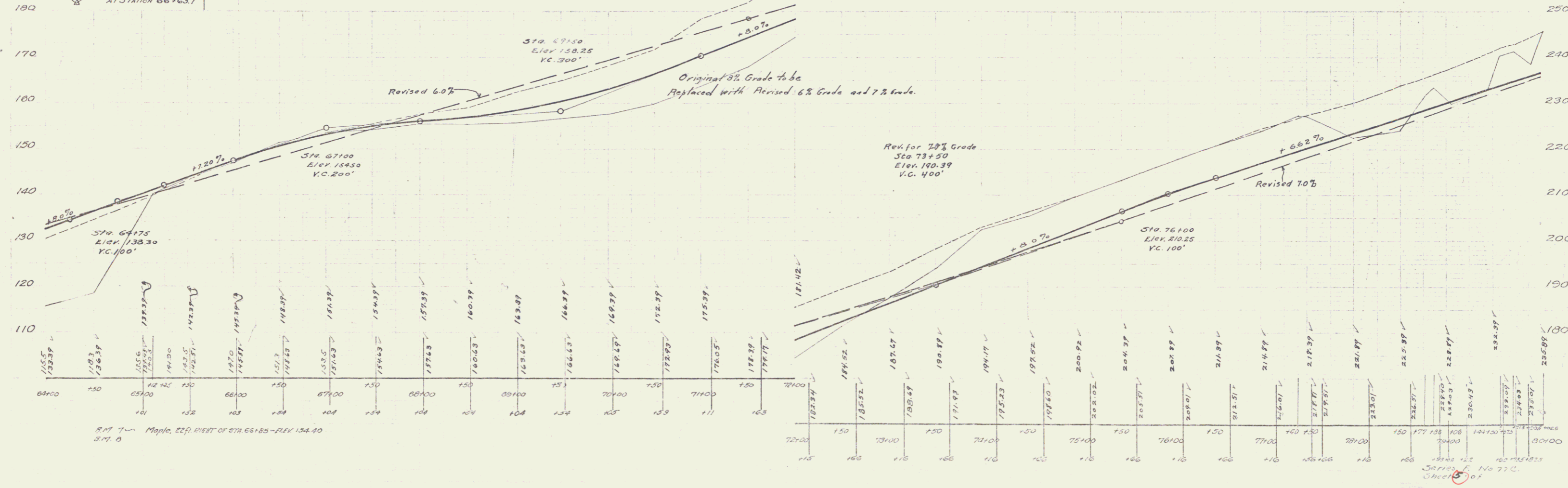
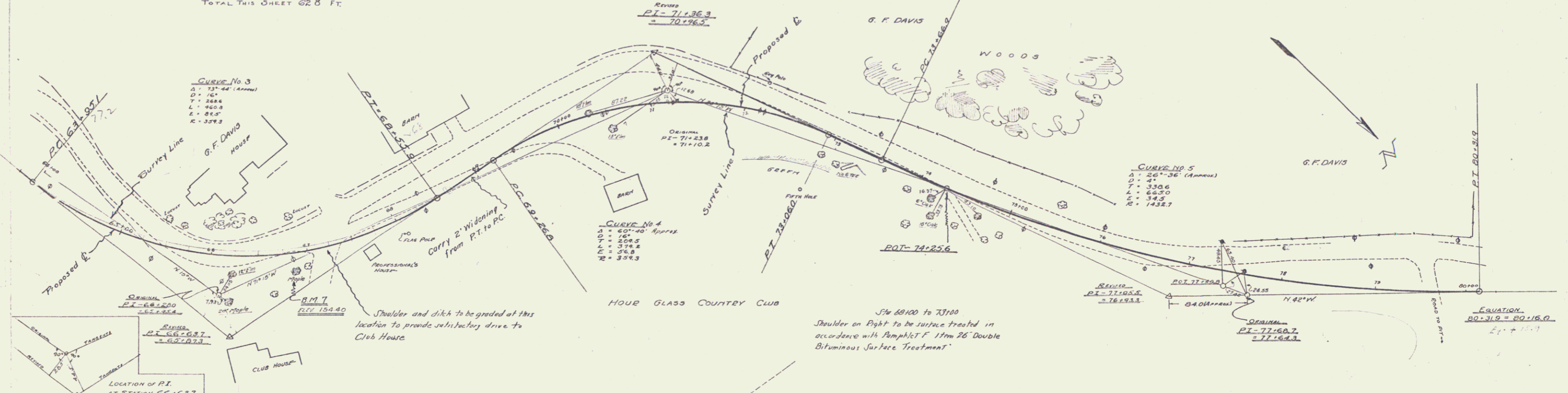
Series F, No. 770
 Sheet 4 of 4

CABLE GUARD RAIL REQUIRED.
RIGHT
STA. 63+00 to STA. 65+42 = 142 FT.
" 63+28 " 73+36 = 400 " LEFT
STA. 64+00 to STA. 64+78 = 78 FT.
TOTAL THIS SHEET 628 FT.

RETAINING WALL REQUIRED
STA. 63+60 to STA. 66+40 = 60 C.Y. Class C Conc. 12x5"
REINFORCING STEEL 56 lbs.
NOT INCLUDED IN GOVERNMENT PARTICIPATION

GROUTED GOBBLE GUTTER REQUIRED.
STA. 65+30 to STA. 66+60 = 37 Sq Yds.

FED. ROAD DIST. NO.	STATE	FED. AID PROJ. NO.	FISCAL YEAR	SHEET NO.	TOTAL SHEETS
9	VT	77C	1987	3	5



R.M. 7 Maple, DEP. DIST. OF STA. 66+85 - ELEV. 134.20
S.M. 0

347100 5 No 77 C
Checked 01

