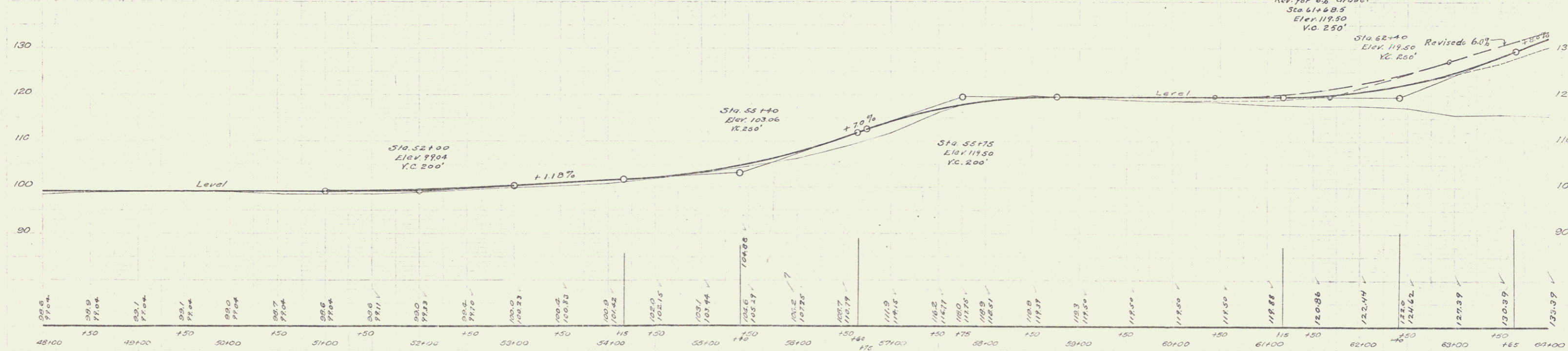
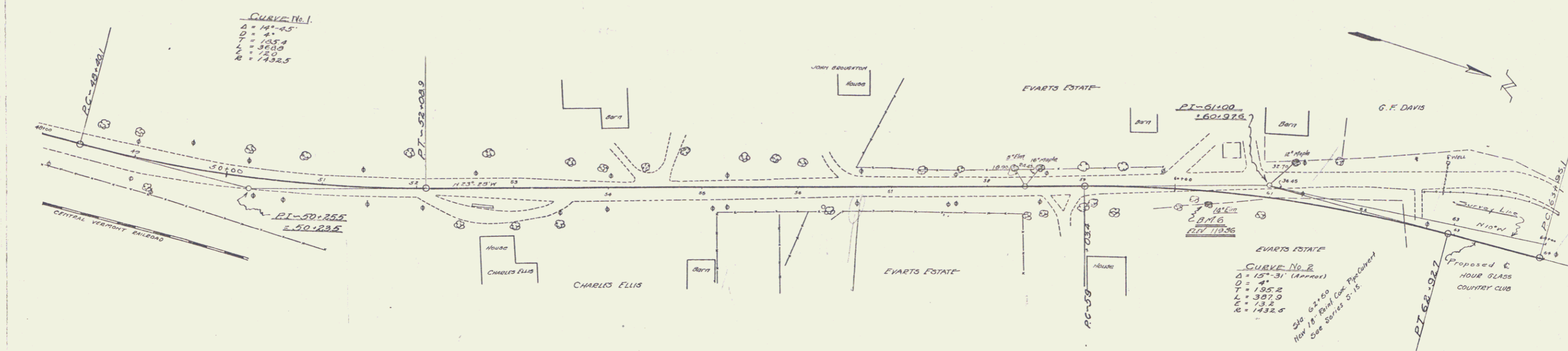


CABLE GUARD RAIL REQUIRED.
 RIGHT
 STA 62+38 to STA 64+00 = 162 Ft.
 LEFT
 " 62+38 to STA 64+00 = 162 "
 TOTAL THIS SHEET: 324 "

NEW GULVERT REQUIRED.
 STA. 62+50 - 18" REINF CONC. PIPE - LENGTH 36 FT.
 CONC. CLASS A, 1'-2-4", - 13 C.Yds.
 REINFORCING STEEL 60 Lbs.

| FED. ROAD DIST. NO. | STATE | FED. AID PROJ. NO. | FISCAL YEAR | SHEET NO. | TOTAL SHEETS |
|---------------------|-------|--------------------|-------------|-----------|--------------|
| 9 | VT | 77C | 1927 | 4 | |



BM 6 - 14' ELM. 18 FT. RIGHT OF STA. 61+35 - Elev. 110.36 (SEE 127.21 & 128.72 SHEETS)

Series F, No. 770
 Sheet 4 of 4