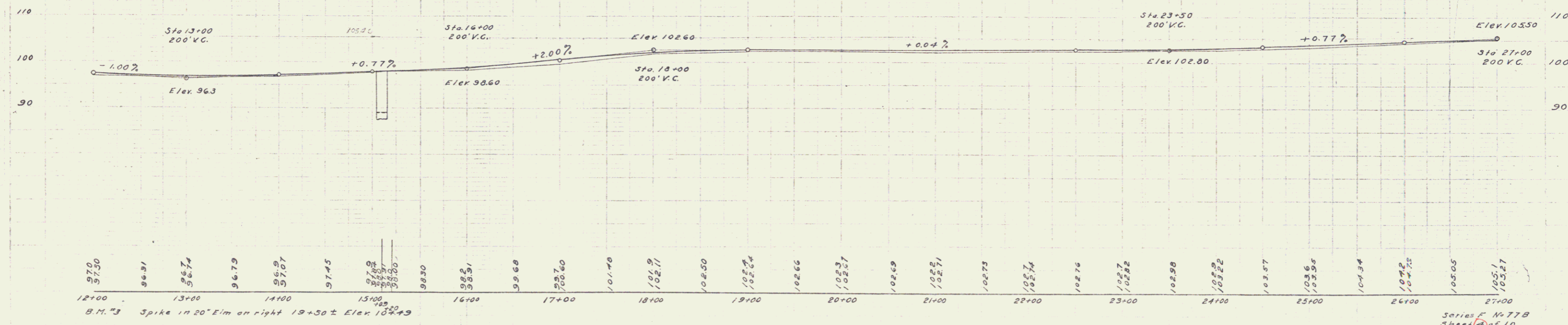
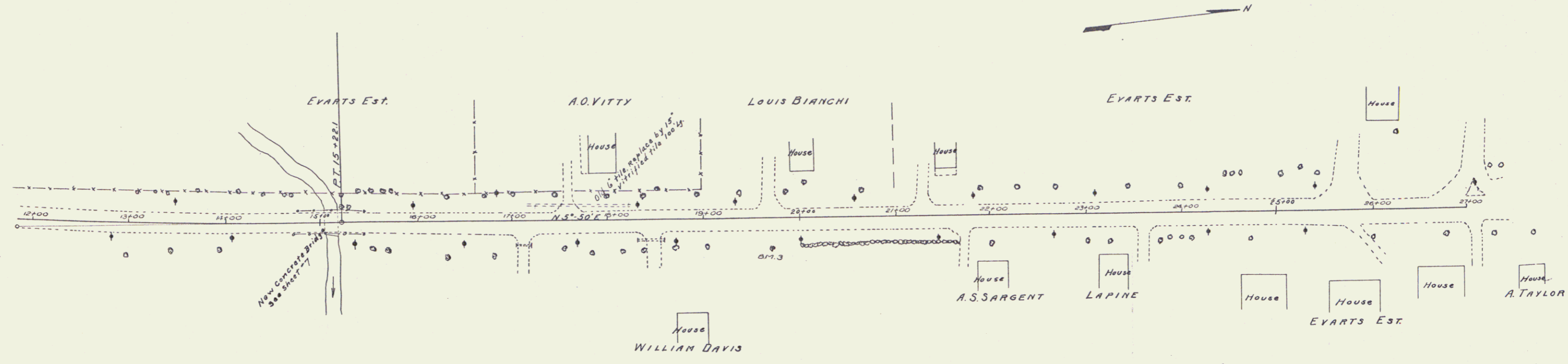


Guard Rail Required.
 On Left
 Sta 14+96 to 15+10 16'
 15+25 - 15+41 16'
 On Right
 Sta 14+96 to 15+10 16'
 15+25 - 15+41 16'

New Culvert Required.
 Sta 17+25 15" Vitrified Tile 100 ft
 1-2 1/2-5 Concrete 1.8 c.y.

778 1925 4 10



H.W. Manser 19/1/25

B.M. 3 Spike in 20" Elm on right 19+50 ± Elev 103.49

Series F No 778
 Sheet 7 of 10