

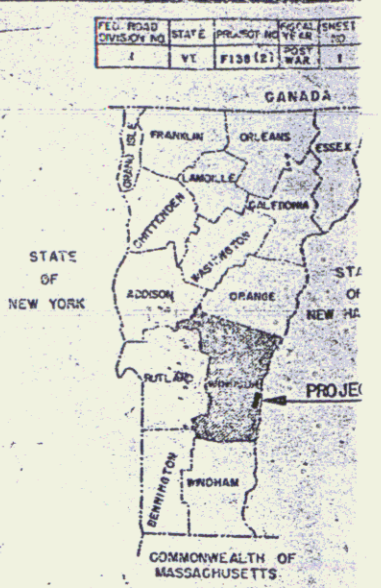
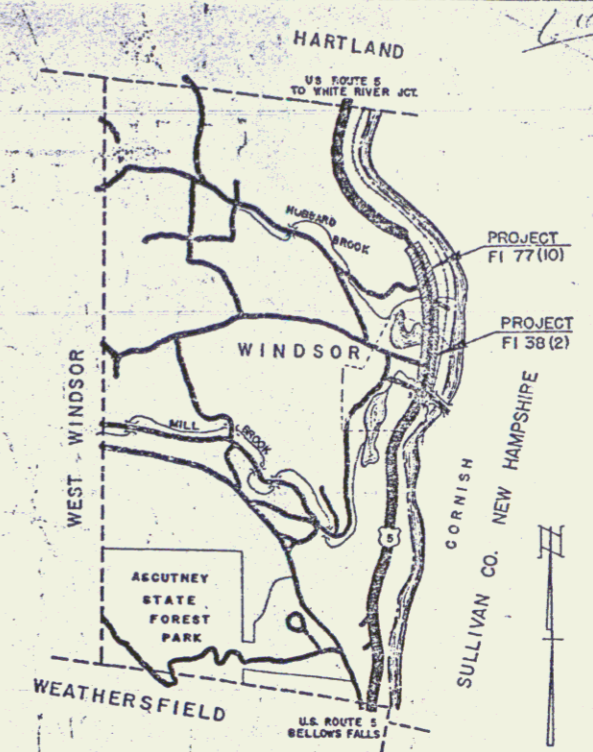
INDEX OF SHEETS

SHEET NO. 1	TITLE PAGE
2-3	TYPICAL CROSS SECTION OF IMPROVEMENT AND CROSS SECTION OF ORIGINAL PAVEMENT
4	QUANTITY SHEET (ITEMS) 36(2)
5	QUANTITY SHEET (DRAINAGE) 36(2)
6-7	EARTHWORK SHEETS 36(2)
8	QUANTITY SHEET (ITEMS) 77(10)
9	QUANTITY SHEET (DRAINAGE) 77(10)
10-11	EARTHWORK SHEETS 77(10)
12-28	PLAN AND PROFILE SHEETS
29	DETAIL SHEET (6'x6' R.C. BOX EXTENSION STA. 52+11.5)
30	DETAIL SHEET (10'x10' R.C. BOX STA. 61+75)
31	DETAIL SHEET (10'x10' R.C. BOX STA. 61+75)
32	REINFORCING STEEL SCHEDULE
33	STANDARD STRUCTURE SHEET SC 21
34	STANDARD STRUCTURE SHEET CD (DRAINAGE AND MARKERS)
35	STANDARD STRUCTURE SHEET CO2 (TYPICAL GRADING)
36	STANDARD STRUCTURE SHEET CO 5 (CONCRETE BLOCK CATCH BASINS OR MANHOLES)
37	STANDARD STRUCTURE SHEET S 40 (BARRICADES, SIGNS, AND LIGHTS)
38	STANDARD STRUCTURE SHEET S 46-45 (CATCH BASINS AND MANHOLES)
39	STANDARD STRUCTURE SHEET S 47-45 (DROP INLETS)
40	TO BE OMITTED
41	STANDARD STRUCTURE SHEET S 53-53 (DETAILS OF TRANSVERSE JOINTS)
42	STANDARD STRUCTURE SHEET S 53-53 (ONE COURSE CEMENT CONCRETE PAVEMENT)
43-67	CROSS SECTIONS
68-70	CHANNEL SECTIONS (STA. 52+11.5)
71	TO BE OMITTED

STANDARD STRUCTURE SHEET APPROVED BY THE CHIEF ENGINEER, VERMONT STATE DEPARTMENT OF HIGHWAYS
5-40 JUNE 10, 1950

STATE OF VERMONT
DEPARTMENT OF HIGHWAYS
PROPOSED IMPROVEMENT
TOWN OF WINDSOR
COUNTY OF WINDSOR
U.S. ROUTE 5
BELLOWS FALLS-WHITE RIVER JCT. ROAD

Pin #99R317

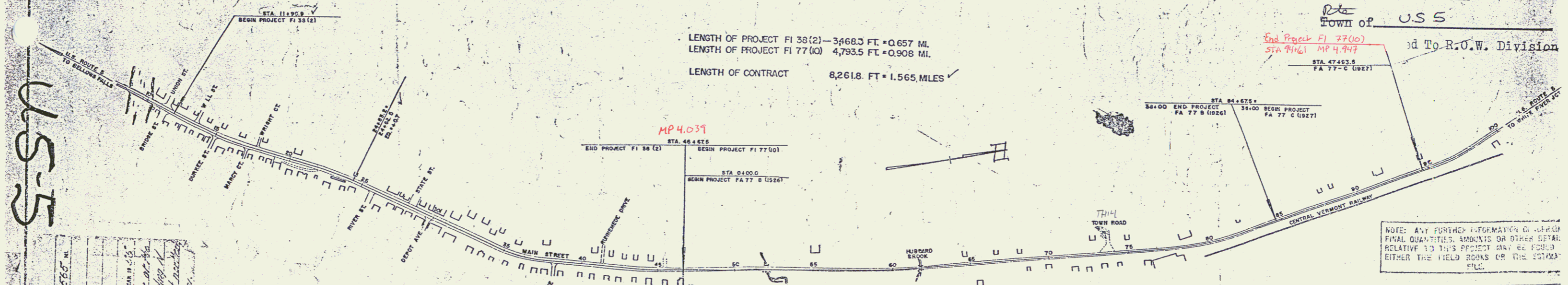


PROJECT F1 38 (2)
BEGINNING IN THE VILLAGE OF WINDSOR APPROXIMATELY 75 FEET NORTH OF THE INTERSECTION OF BRIDGE AND UNION STREETS AND EXTENDING NORTHERLY 3,468.3 FEET TO THE VILLAGE LIMITS.
LENGTH OF PROJECT 3,468.3 FT. = 0.657 MI.

PROJECT F1 77 (10)
BEGINNING AT THE NORTHERLY LIMITS OF THE VILLAGE OF WINDSOR AND EXTENDING NORTHERLY 4,793.5 FEET.
LENGTH OF PROJECT 4,793.5 FEET = 0.908 MI.

SCALE 1" = 1 MI.
RIGHT-OF-WAY DIVISION
TOWN FILE
PERPETUAL
TOWN OF U.S.

LENGTH OF PROJECT F1 38(2) - 3,468.3 FT. = 0.657 MI.
LENGTH OF PROJECT F1 77(10) 4,793.5 FT. = 0.908 MI.
LENGTH OF CONTRACT 8,261.8 FT. = 1.565 MILES



RECORD PLANS
WINDSOR F1 38 (2) & F1 77 (10)
MILLER CONST. CO.
CONTRACT DATED JULY 15, 1954

CURVE DATA

DEFLECTION OF ANGLE	Δ
DEGREE OF CURVE	D
RADIUS OF CURVE	R
TANGENT DISTANCE	T
LENGTH OF CURVE	L
EXTERNAL DISTANCE	E
POINT OF INTERSECTION	P.I.
POINT OF CURVE	P.C.
POINT OF TANGENT	P.T.
POINT ON TANGENT	P.O.T.
POINT ON SUB-TANGENT	P.O.S.T.

SCALES

TITLE	1" = 300'
TYPICAL	1" = 20'
PLAN	1" = 20'
PROFILE HORIZONTAL	1" = 20'
PROFILE VERTICAL	1" = 10'
CROSS-SECTIONS	1" = 10'

PROJECT NAME & NUMBER	TYPE	PAVEMENT AREA
WINDSOR F1 38 (2) & F1 77 (10)	NEW CONC. PAVEMENT REIN. CONC. PAVEMENT	71,200 - 32,400 sq. ft. 66,770 - 12,769 sq. ft.

RECORD PLANS

MATERIALS

SUB-BASE OF GRAVEL	HAMMOND PIT, WINDSOR
CRUSHED GRAVEL	HAMMOND PIT, WINDSOR
CUTBACK ASPHALT	SOCIETY VACUUM, E. PROV., R.I.
G.R. CABLE	4 1/2 STEEL WIRE CO., NEW HAVEN, CONN.
G.R. PAINT	FRANKLIN PAINT CO., FRANKLIN, MASS.
CEMENT	ATLAS CEMENT CO., HUDSON, N.Y. LONE STAR PORT. CEM. CO., HUDSON, N.Y. ALPHA PORT. CEM. CO., HUDSON, N.Y.
REIN. STEEL	J.T. RYBONSON & SONS, CAMBRIDGE, MASS.
R.C.P.	VT. CONC. PIPE CORP., WINDSOR
A.C.C.M.P.	BERGER MFG. CO., W. WINSTER, STA. SOCIETY VACUUM, E. PROV., R.I.
PEN. ASPHALT	ESSO CO., EVERETT, MASS.
AGGREGATES	TWIN STATE SAND & GR. CO., LEEDEN, N.H. COLONIAL SAND & GR. CO., SHARON
BIT. PAVEMENT	BLAKISTON, INC., W. LEEDEN, V.H. ENTER & SINGELLA, PL. SPRINGFIELD

CONTRACTOR MILLER CONST. CO.
RESIDENT ENG'R T. L. DUDLEY
INSPECTORS GEO. HOPKINS
RECORD PLANS ALDRICH-O'NEIL - UTTON

CONTRACT DATED JUNE 16, 1954
CONTRACT STARTED JUNE 16, 1954
CONTRACT COMPLETED JULY 15, 1954
CONTRACT ACCEPTED JULY 15, 1954

THESE PLANS ARE SUBJECT TO SUCH REVISIONS AS MAY BE REQUIRED BY THE BUREAU OF PUBLIC ROADS OR THE COMMISSIONER OF HIGHWAYS.
CONSTRUCTION IS TO BE CARRIED ON IN ACCORDANCE WITH THE PLANS AND THE STANDARD ROAD AND BRIDGE SPECIFICATIONS OF 1942, AS APPROVED JULY 23, 1949 BY THE BUREAU OF PUBLIC ROADS, INCLUDING ALL SUBSEQUENT APPROVED REVISIONS AND SUCH REVISED SPECIFICATIONS AND SPECIAL PROVISIONS AS ARE SUBMITTED WITH THE PLANS.

DEPARTMENT OF COMMERCE
BUREAU OF PUBLIC ROADS

APPROVED: *William C. Aldrich* DISTRICT ENGINEER
DATE: APRIL 26, 1954

APPROVED: *George S. Clarke* DISTRICT ENGINEER
DATE: APRIL 22, 1954

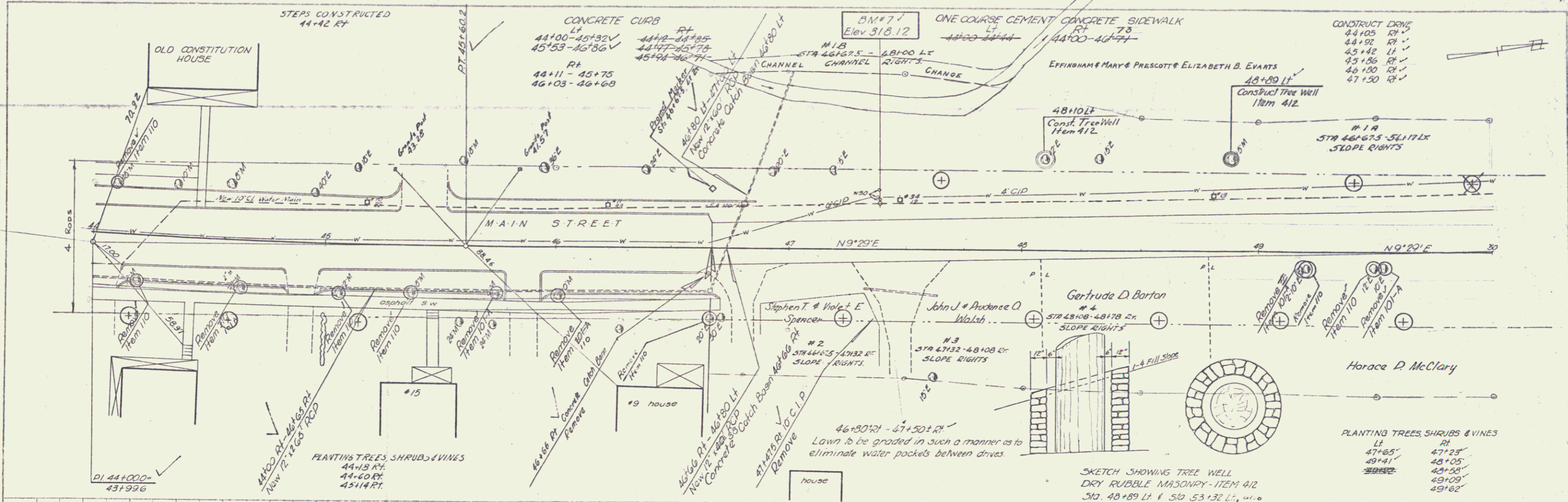
APPROVED: *W.C. Hewitt* DISTRICT ENGINEER
DATE: APRIL 26, 1954

APPROVED: *W.C. Hewitt* DISTRICT ENGINEER
DATE: APRIL 26, 1954

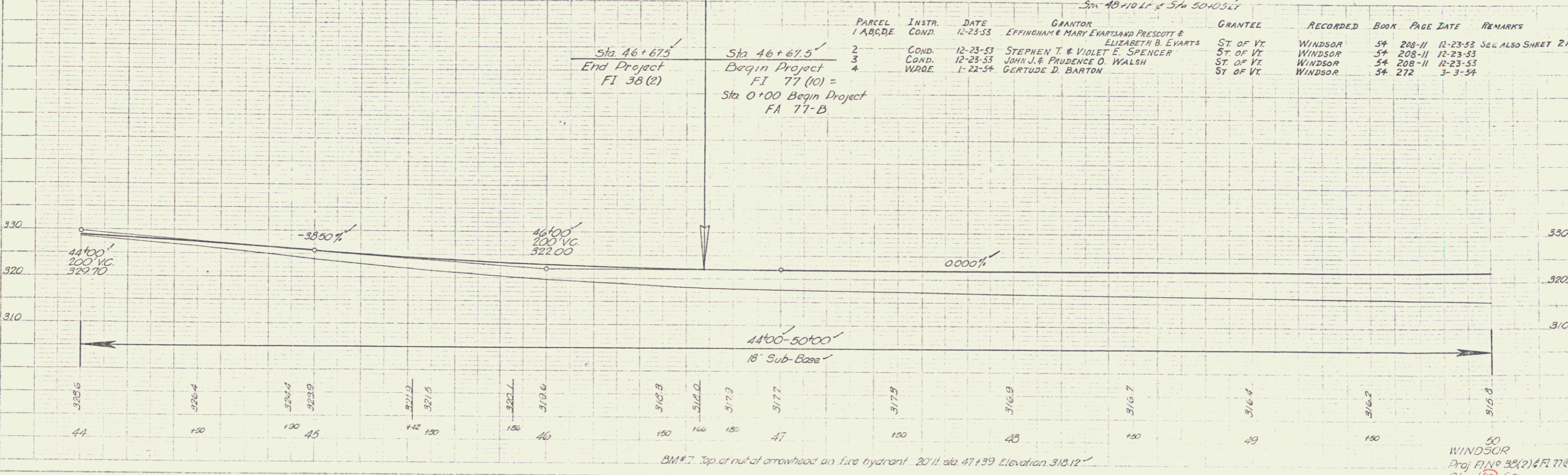
PROJECT F1 NO. 38 (2)
F1 77 (10)
SHEET 1 OF 7 SHEETS

PLAN	DATE	BY
NO. 1	11/21/05	WJ
NO. 2	11/21/05	WJ
NO. 3	11/21/05	WJ
NO. 4	11/21/05	WJ
NO. 5	11/21/05	WJ
NO. 6	11/21/05	WJ
NO. 7	11/21/05	WJ
NO. 8	11/21/05	WJ
NO. 9	11/21/05	WJ
NO. 10	11/21/05	WJ

PARCEL	DATE	BY
NO. 1	11/21/05	WJ
NO. 2	11/21/05	WJ
NO. 3	11/21/05	WJ
NO. 4	11/21/05	WJ
NO. 5	11/21/05	WJ
NO. 6	11/21/05	WJ
NO. 7	11/21/05	WJ
NO. 8	11/21/05	WJ
NO. 9	11/21/05	WJ
NO. 10	11/21/05	WJ



PARCEL	INSTR.	DATE	GRANTOR	GRANTEE	RECORDED	BOOK	PAGE	DATE	REMARKS
1	A, B, C, D, E	12-23-53	EFFINGHAM & MARY EVARTS AND PRESCOTT & ELIZABETH B. EVARTS	ST. OF VT.	WINDSOR	54	208-11	12-23-53	See also sheet 21
2	COND.	12-23-53	STEPHEN T. & VIOLET E. SPENCER	ST. OF VT.	WINDSOR	54	208-11	12-23-53	
3	COND.	12-23-53	JOHN J. & PRUDENCE O. WALSH	ST. OF VT.	WINDSOR	54	208-11	12-23-53	
4	COND.	1-22-54	GERTRUDE D. BARTON	ST. OF VT.	WINDSOR	54	272	3-3-54	



BM #7 Top of nut of arrowhead on fire hydrant. 20' ft. sta 47+39 Elevation 318.12'

50 WINDSOR
 Proj. FIN # 38(2) & FI 77(0)
 Sheet 19 of 71

PLANTING TREES, SHRUBS, & VINES
LT OF
62+20 - 62+50

THREE CABLE GUARD RAIL
1/4" STEEL POSTS
62+00 - 62+24.84

CONSTRUCT DRIVE
63+20 LT ✓
63+30 RT ✓
64+00 LT ✓
65+17 RT ✓
66+38 LT ✓
67+95 LT ✓

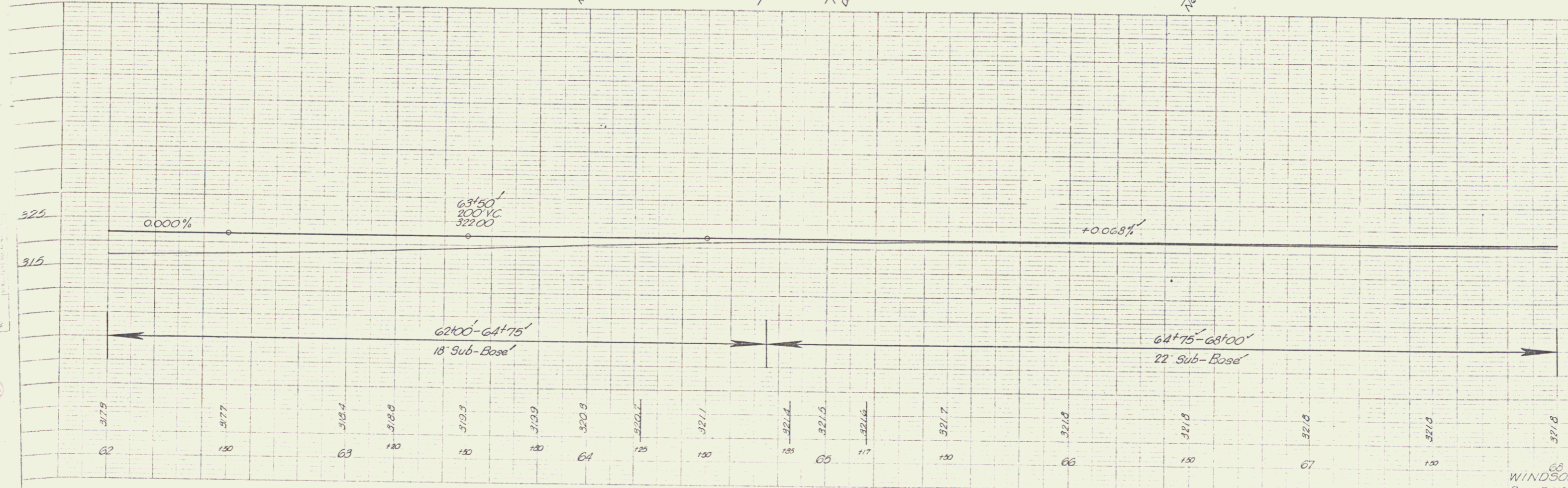
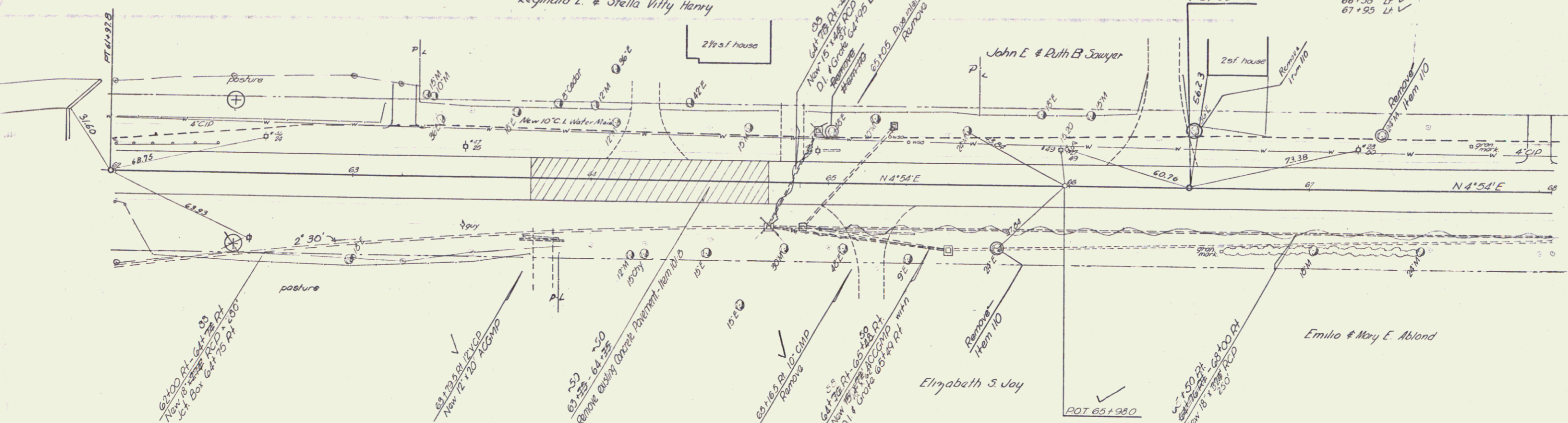
EFFINGHAM & MARY & PRESOTT & ELIZABETH B. EVARTS

Reginald L. & Stella Vitty Henry

John E. & Ruth B. Sawyer

Emilio & Mary E. Abland

Elizabeth S. Joy

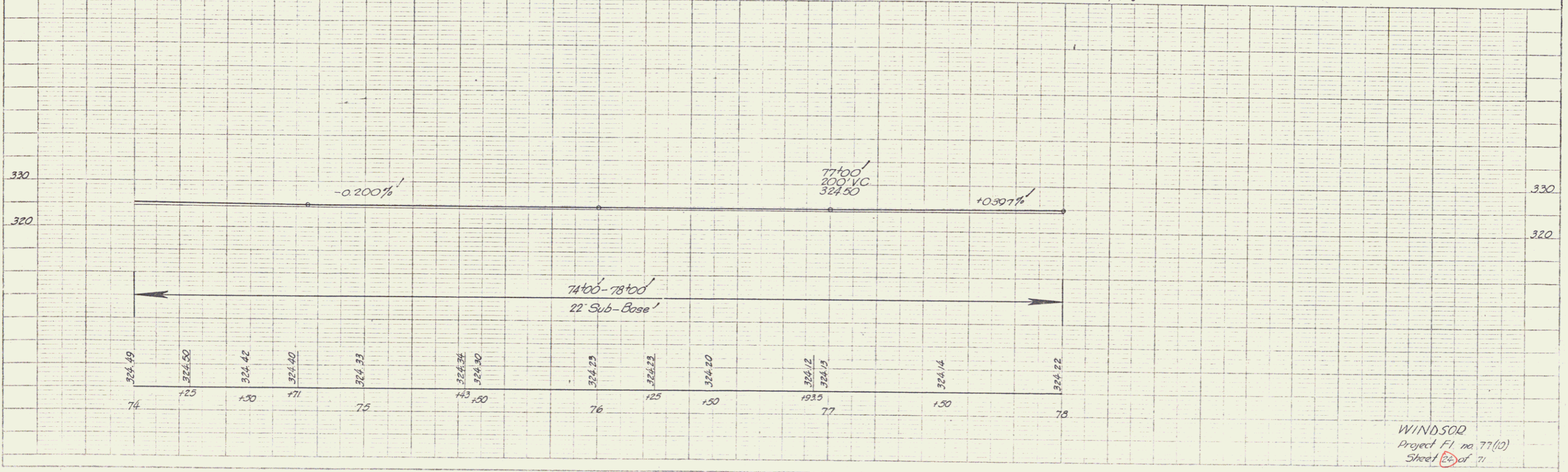
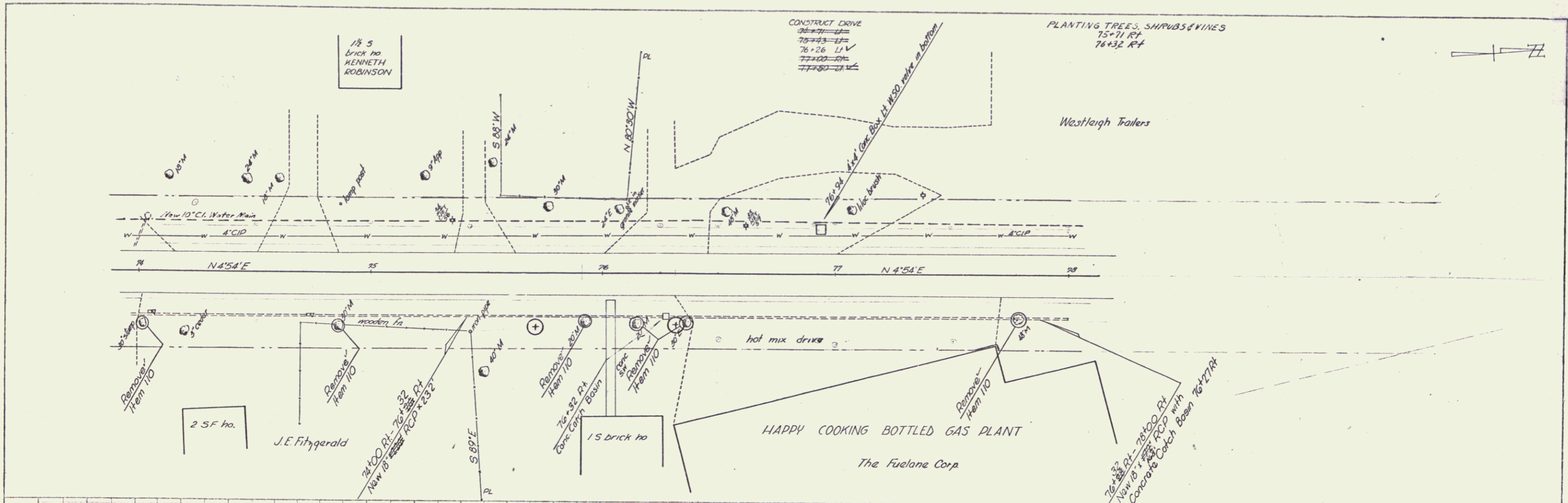


WINDSOR
Proj. F.I.N. 77(10)
Sheet 22 of 11

5

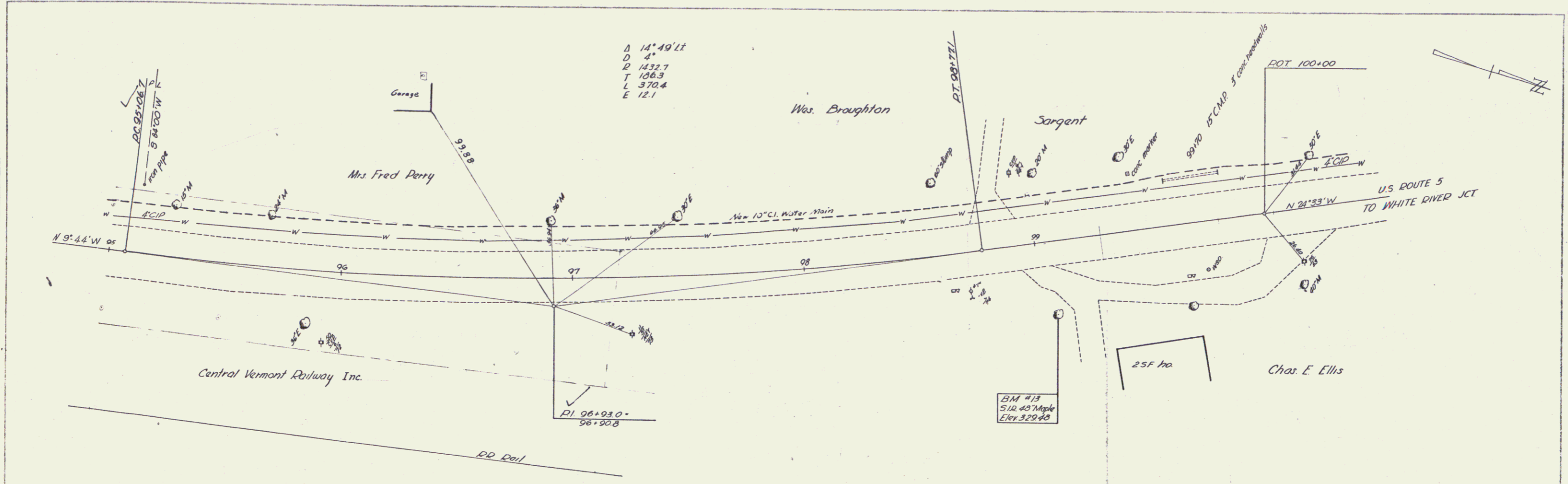
PLAN	DATE	BY
NOTED	DATE	BY
REVISION	DATE	BY
REVISION	DATE	BY
REVISION	DATE	BY

PROJECT	DATE	BY
NOTED	DATE	BY
REVISION	DATE	BY
REVISION	DATE	BY
REVISION	DATE	BY



WINDSOR
Project F1 no. 77(12)
Sheet 6 of 7

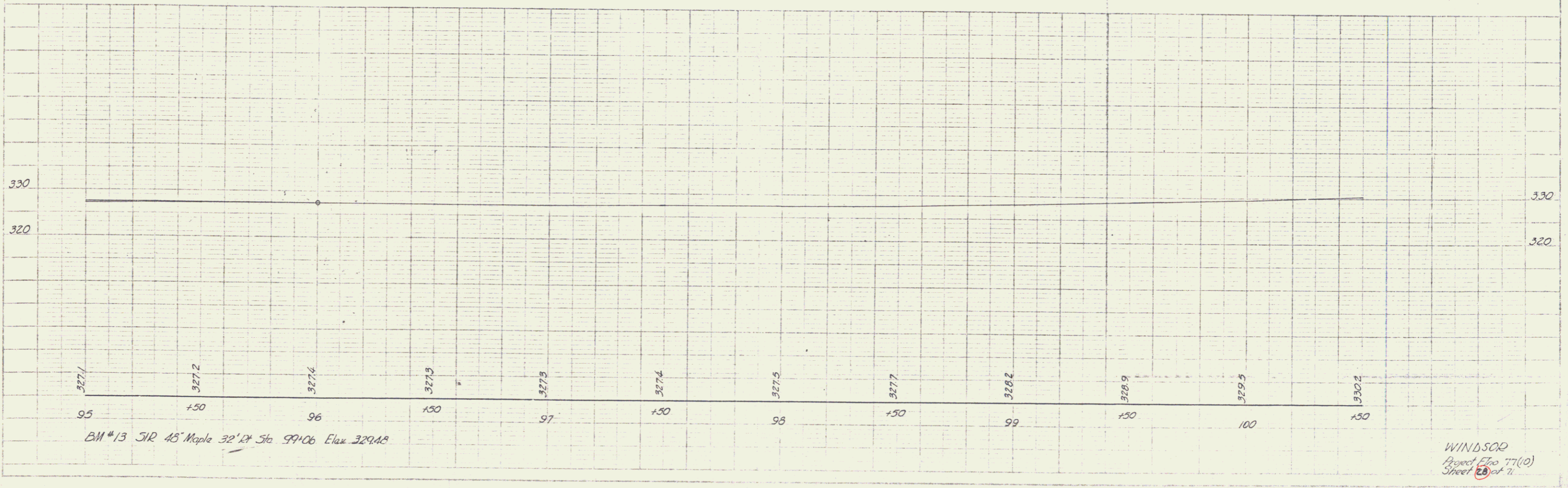
FILE NO. 77
 DATE 9/23/59
 DRAWN BY JEP
 CHECKED BY JEP
 SCALE 1" = 40'
 SHEET 28 OF 71



A 14°49'11"
 D 4'
 P 1432.7
 T 106.3
 L 370.4
 E 12.1

BM #13
 510 45' Maple
 Elev 329.48

RI 96+93.0
 96+90.8



BM #13 510 45' Maple 32' 12" Sta 99+06 Elev 329.48

WINDSOR
 Project E20 77(0)
 Sheet 28 of 71

11