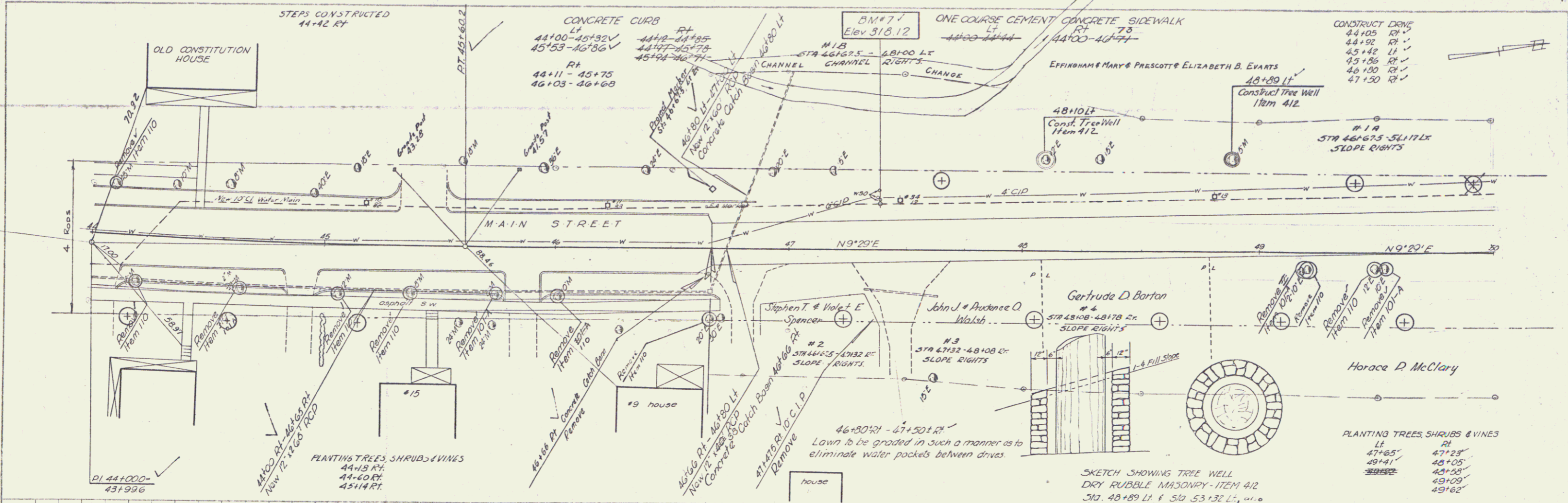
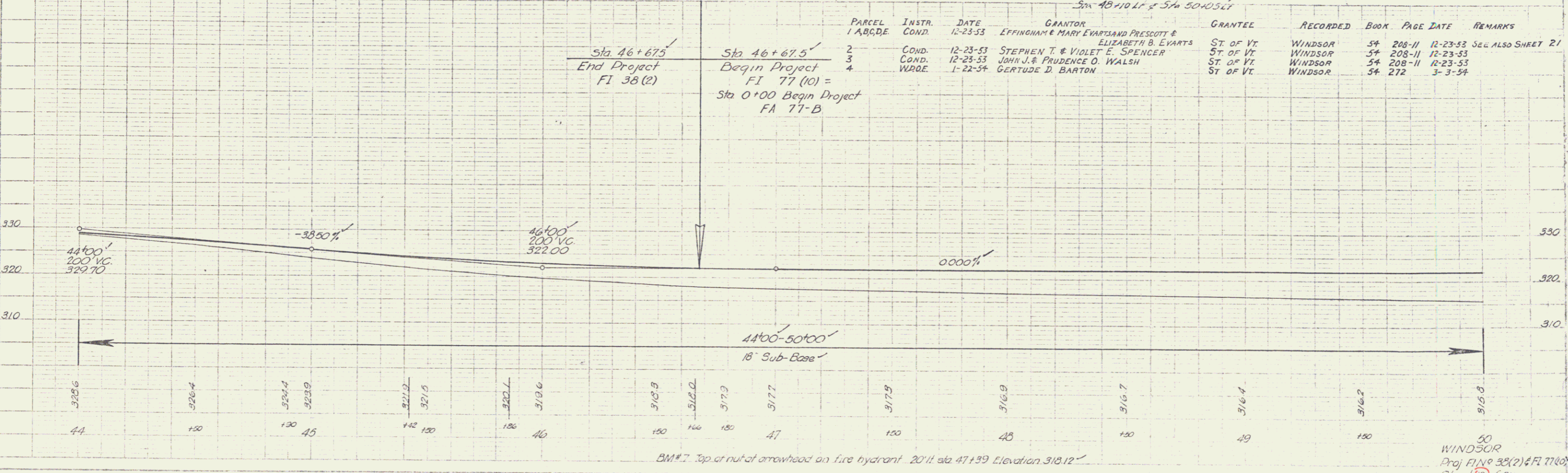


PLAN	DATE	BY
NO. 1	11/23/53	WINDSOR
NO. 2	11/23/53	WINDSOR
NO. 3	11/23/53	WINDSOR
NO. 4	11/23/53	WINDSOR
NO. 5	11/23/53	WINDSOR
NO. 6	11/23/53	WINDSOR
NO. 7	11/23/53	WINDSOR
NO. 8	11/23/53	WINDSOR
NO. 9	11/23/53	WINDSOR
NO. 10	11/23/53	WINDSOR

PARCEL	DATE	BY
NO. 1	11/23/53	WINDSOR
NO. 2	11/23/53	WINDSOR
NO. 3	11/23/53	WINDSOR
NO. 4	11/23/53	WINDSOR
NO. 5	11/23/53	WINDSOR
NO. 6	11/23/53	WINDSOR
NO. 7	11/23/53	WINDSOR
NO. 8	11/23/53	WINDSOR
NO. 9	11/23/53	WINDSOR
NO. 10	11/23/53	WINDSOR



PARCEL	INSTR.	DATE	GRANTOR	GRANTEE	RECORDED	BOOK	PAGE	DATE	REMARKS
1	A, B, C, D, E	12-23-53	EFFINGHAM & MARY EVARTS AND PRESCOTT & ELIZABETH B. EVARTS	ST. OF VT.	WINDSOR	54	208-11	12-23-53	See also sheet 21
2	COND.	12-23-53	STEPHEN T. & VIOLET E. SPENCER	ST. OF VT.	WINDSOR	54	208-11	12-23-53	
3	COND.	12-23-53	JOHN J. & PRUDENCE O. WALSH	ST. OF VT.	WINDSOR	54	208-11	12-23-53	
4	COND.	1-22-54	GERTRUDE D. BARTON	ST. OF VT.	WINDSOR	54	272	3-3-54	



BM #7 Top of nut at arrowhead on fire hydrant. 20' ft. sta 47+39 Elevation 318.12'

50 WINDSOR
 Proj. FIN # 38(2) & FI 77(6)
 Sheet 19 of 71