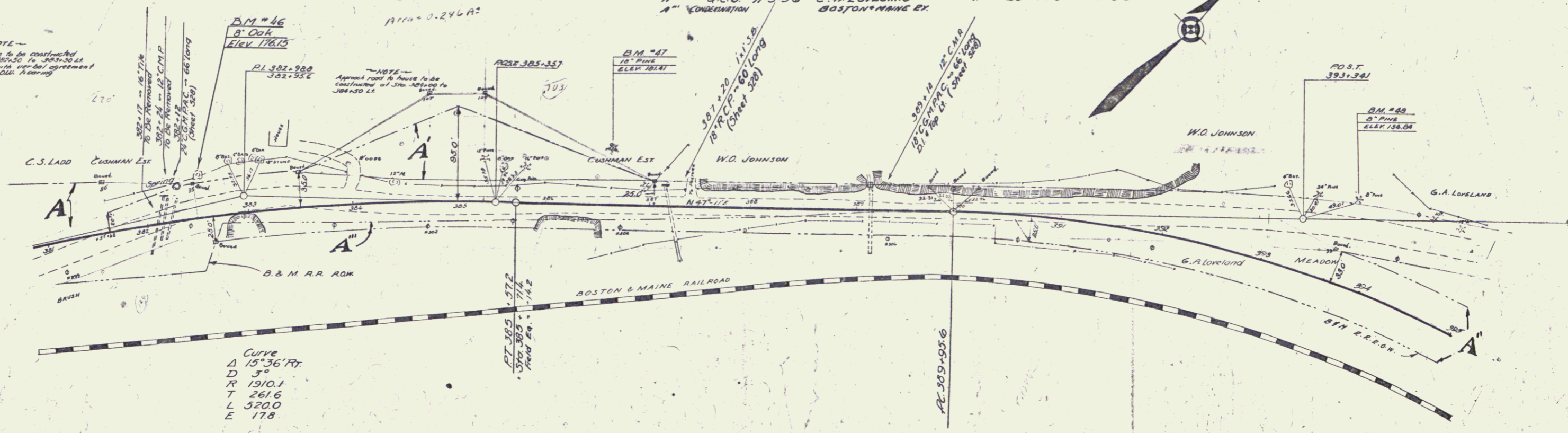


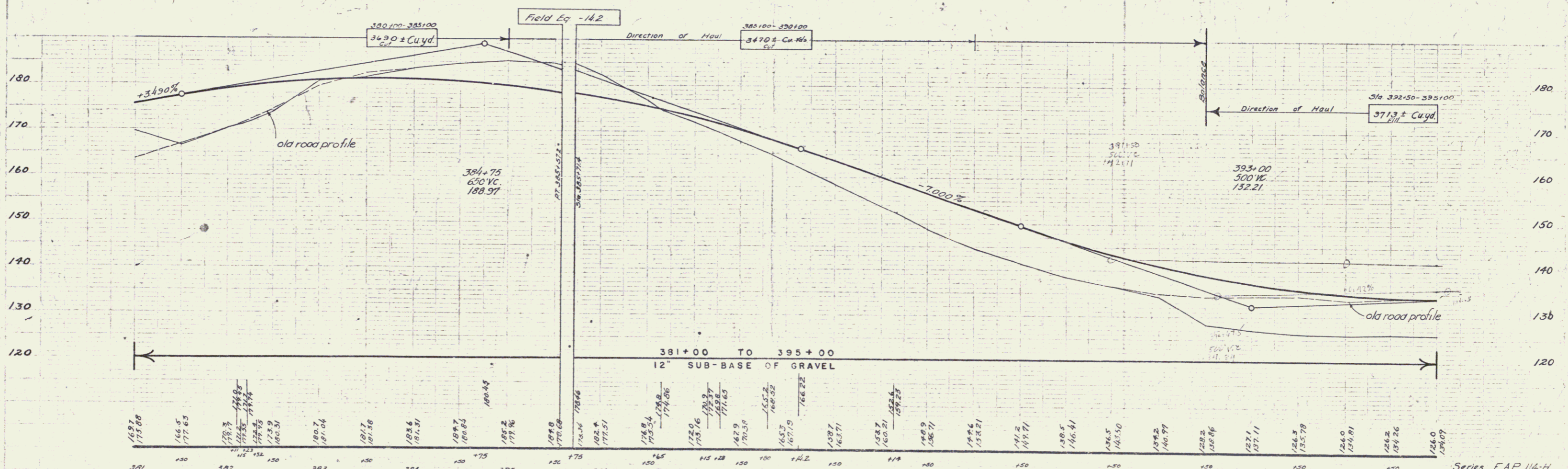
PARCEL	KIND OF INSTRUMENT	DATE	GRANTOR	GRANTEE	RECORDED	REMARKS
A	T.C.D.	9-19-36	CHARLIS SUJANN LADD	STOVVT	BOOK PAGE DATE	
A	O.C.D.	11-20-36	FLOREN A. CUSHMAN	"	2 445-7 10-15-36	
A	O.C.D.	11-2-36	E.A. LOVELAND	"	20 450 11-28-36	
A	CONDEMNATION		BOSTON & MAINE RR.	"	20 448 11-6-36	

FILE NO.	STATE	PROJ. NO.	YEAR	SHEET NO.	TOTAL SHEETS
118-N	VT	1927	5	116	

NOTE - Approach to bridge to be constructed at Sta. 382+00 to 383+50 in accordance with verbal agreement in form of Record Plan.



Curve  
 $\Delta$  15° 36' RT  
 D 3°  
 T 1910.1  
 Y 261.6  
 L 520.0  
 E 17.8



Station	Elevation	Station	Elevation	Station	Elevation
381+00	169.97	384+00	177.83	387+00	173.21
381+10	166.5	384+10	177.83	387+10	173.21
381+20	166.5	384+20	177.83	387+20	173.21
381+30	166.5	384+30	177.83	387+30	173.21
381+40	166.5	384+40	177.83	387+40	173.21
381+50	166.5	384+50	177.83	387+50	173.21
381+60	166.5	384+60	177.83	387+60	173.21
381+70	166.5	384+70	177.83	387+70	173.21
381+80	166.5	384+80	177.83	387+80	173.21
381+90	166.5	384+90	177.83	387+90	173.21
382+00	166.5	385+00	177.83	388+00	173.21
382+10	166.5	385+10	177.83	388+10	173.21
382+20	166.5	385+20	177.83	388+20	173.21
382+30	166.5	385+30	177.83	388+30	173.21
382+40	166.5	385+40	177.83	388+40	173.21
382+50	166.5	385+50	177.83	388+50	173.21
382+60	166.5	385+60	177.83	388+60	173.21
382+70	166.5	385+70	177.83	388+70	173.21
382+80	166.5	385+80	177.83	388+80	173.21
382+90	166.5	385+90	177.83	388+90	173.21
383+00	166.5	386+00	177.83	389+00	173.21
383+10	166.5	386+10	177.83	389+10	173.21
383+20	166.5	386+20	177.83	389+20	173.21
383+30	166.5	386+30	177.83	389+30	173.21
383+40	166.5	386+40	177.83	389+40	173.21
383+50	166.5	386+50	177.83	389+50	173.21
383+60	166.5	386+60	177.83	389+60	173.21
383+70	166.5	386+70	177.83	389+70	173.21
383+80	166.5	386+80	177.83	389+80	173.21
383+90	166.5	386+90	177.83	389+90	173.21
384+00	166.5	387+00	173.21	390+00	173.21
384+10	166.5	387+10	173.21	390+10	173.21
384+20	166.5	387+20	173.21	390+20	173.21
384+30	166.5	387+30	173.21	390+30	173.21
384+40	166.5	387+40	173.21	390+40	173.21
384+50	166.5	387+50	173.21	390+50	173.21
384+60	166.5	387+60	173.21	390+60	173.21
384+70	166.5	387+70	173.21	390+70	173.21
384+80	166.5	387+80	173.21	390+80	173.21
384+90	166.5	387+90	173.21	390+90	173.21
385+00	166.5	388+00	173.21	391+00	173.21
385+10	166.5	388+10	173.21	391+10	173.21
385+20	166.5	388+20	173.21	391+20	173.21
385+30	166.5	388+30	173.21	391+30	173.21
385+40	166.5	388+40	173.21	391+40	173.21
385+50	166.5	388+50	173.21	391+50	173.21
385+60	166.5	388+60	173.21	391+60	173.21
385+70	166.5	388+70	173.21	391+70	173.21
385+80	166.5	388+80	173.21	391+80	173.21
385+90	166.5	388+90	173.21	391+90	173.21
386+00	166.5	389+00	173.21	392+00	173.21
386+10	166.5	389+10	173.21	392+10	173.21
386+20	166.5	389+20	173.21	392+20	173.21
386+30	166.5	389+30	173.21	392+30	173.21
386+40	166.5	389+40	173.21	392+40	173.21
386+50	166.5	389+50	173.21	392+50	173.21
386+60	166.5	389+60	173.21	392+60	173.21
386+70	166.5	389+70	173.21	392+70	173.21
386+80	166.5	389+80	173.21	392+80	173.21
386+90	166.5	389+90	173.21	392+90	173.21
387+00	166.5	390+00	173.21	393+00	173.21
387+10	166.5	390+10	173.21	393+10	173.21
387+20	166.5	390+20	173.21	393+20	173.21
387+30	166.5	390+30	173.21	393+30	173.21
387+40	166.5	390+40	173.21	393+40	173.21
387+50	166.5	390+50	173.21	393+50	173.21
387+60	166.5	390+60	173.21	393+60	173.21
387+70	166.5	390+70	173.21	393+70	173.21
387+80	166.5	390+80	173.21	393+80	173.21
387+90	166.5	390+90	173.21	393+90	173.21
388+00	166.5	391+00	173.21	394+00	173.21
388+10	166.5	391+10	173.21	394+10	173.21
388+20	166.5	391+20	173.21	394+20	173.21
388+30	166.5	391+30	173.21	394+30	173.21
388+40	166.5	391+40	173.21	394+40	173.21
388+50	166.5	391+50	173.21	394+50	173.21
388+60	166.5	391+60	173.21	394+60	173.21
388+70	166.5	391+70	173.21	394+70	173.21
388+80	166.5	391+80	173.21	394+80	173.21
388+90	166.5	391+90	173.21	394+90	173.21
389+00	166.5	392+00	173.21	395+00	173.21
389+10	166.5	392+10	173.21		
389+20	166.5	392+20	173.21		
389+30	166.5	392+30	173.21		
389+40	166.5	392+40	173.21		
389+50	166.5	392+50	173.21		
389+60	166.5	392+60	173.21		
389+70	166.5	392+70	173.21		
389+80	166.5	392+80	173.21		
389+90	166.5	392+90	173.21		

Series F.A.P. 114-H  
 Sheet 5 of 114 Sheets