

INDEX OF SHEETS

SHEET NO.	TITLE PAGE
1	TITLE PAGE
2	TYPICAL CROSS-SECTION OF IMPROVEMENT (GRADING BASE & DRAINAGE WITH DOUBLE TACK COAT OF REFINED TAR ITEM 29)
3	DETAILS OF CONSTRUCTION
4-3A	PLAN AND PROFILE SHEETS
10	SPECIAL 7x7 REINFORCED CONCRETE BOX CULVERT
11	STANDARD STRUCTURE SHEET (S10) BARRICADES, SIGNS, LIGHT
11A	STANDARD STRUCTURE SHEET (S29) BOX CULVERTS
12	STANDARD STRUCTURE SHEET (S29) PIPE CULVERTS
13	STANDARD STRUCTURE SHEET (S30) GROUTED COBBLE GUTTER
14	STANDARD STRUCTURE SHEET (S31) BOUNDARY MARKERS
15	CROSS SECTIONS

STANDARD SHEETS 528 AND 529 APPROVED BY THE CHIEF ENGINEER: JULY 11 TH 1933.
 STANDARD SHEET 530 APPROVED BY THE CHIEF ENGINEER: AUGUST 15 TH 1933.
 STANDARD SHEET 531 APPROVED BY THE CHIEF ENGINEER: JULY 25 TH 1934.

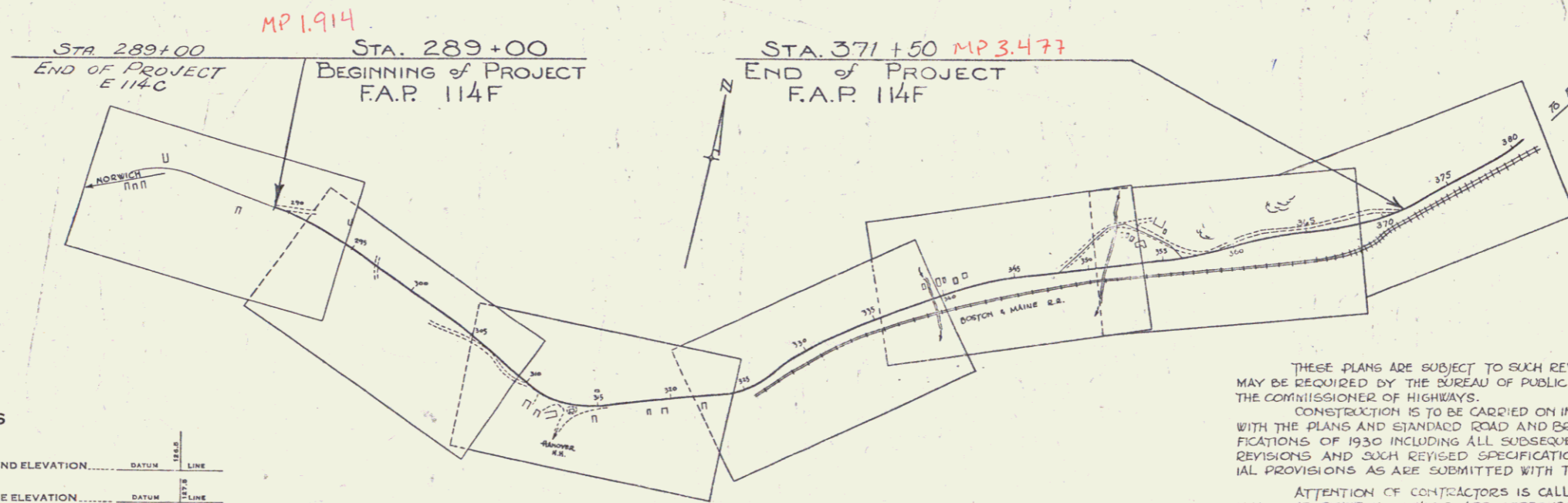
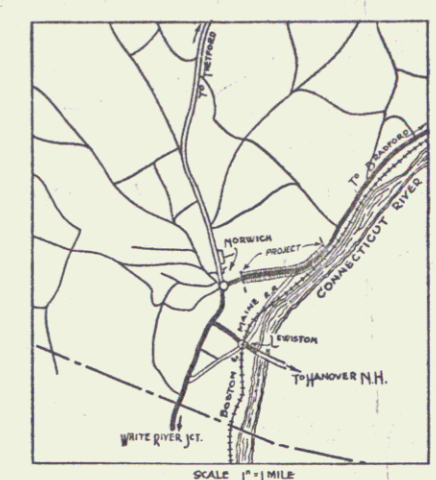
STATE OF VERMONT
 STATE HIGHWAY DEPARTMENT

PLAN AND PROFILE OF PROPOSED
 STATE HIGHWAY

FEDERAL AID PROJECT
 TOWN OF NORWICH
 NORWICH-BRADFORD ROAD
 FROM THE END OF THE PRESENT SURFACE
 EASTERLY 8243.6 FT. TO A POINT APPROX-
 IMATELY 350 FT. EAST OF THE BARN OF C. S. LADD.

LENGTH OF PROJECT 8243.6 FT. = 1561' MI.

FED. ROAD DIST. NO.	STATE	FED. AID PROJ. NO.	FISCAL YEAR	SHEET NO.	TOTAL SHEETS
9	Vt.	114 F	1934	1	12



RIGHT-OF-WAY DIVISION
 TOWN FILE
 PERPETUAL
 Rte of US 5
 (To Be Returned To R.O.W. Division)

APPROVED: Aug 19, 1935
[Signature]
 COMMISSIONER OF HIGHWAYS
 SUBMITTED BY ORDER OF THE STATE HIGHWAY BOARD

THESE PLANS ARE SUBJECT TO SUCH REVISIONS AS MAY BE REQUIRED BY THE BUREAU OF PUBLIC ROADS OR THE COMMISSIONER OF HIGHWAYS.
 CONSTRUCTION IS TO BE CARRIED ON IN ACCORDANCE WITH THE PLANS AND STANDARD ROAD AND BRIDGE SPECIFICATIONS OF 1930 INCLUDING ALL SUBSEQUENT APPROVED REVISIONS AND SUCH REVISED SPECIFICATIONS AND SPECIAL PROVISIONS AS ARE SUBMITTED WITH THE PLANS.
 ATTENTION OF CONTRACTORS IS CALLED TO THE FACT THAT THE STATE HIGHWAY BOARD RESERVES THE RIGHT TO EXTEND THIS PROJECT EASTERLY AT THE SAME CONTRACT PRICES SAID COST OF EXTENSION NOT TO EXCEED 25% OF RECOMMENDED THE AMOUNT OF THE CONTRACT.

CONVENTIONAL SIGNS

COUNTY LINE	GROUND ELEVATION	DATE	LINE
TOWN LINE	GRADE ELEVATION	DATE	LINE
FENCE LINE			
STONE WALL			
UNFENCED PROPERTY			
GUARD RAIL			
TRAVELED WAY			
RAILROAD			
RETAINING WALL			
CENTER LINE			
SURVEY LINE			
CULVERT			
DROP INLET			
TROLLEY POLE			
POWER POLE			
TELEPHONE POLE			
TREES			
HEDGE			

CURVE DATA

DEFLECTION ANGLE	Δ
DEGREE OF CURVE	D
RADIUS OF CURVE	R
TANGENT DISTANCE	T
LENGTH OF CURVE	L
EXTERNAL DISTANCE	E
POINT OF INTERSECTION	P. I.
POINT OF CURVE	P. C.
POINT OF TANGENT	P. T.
POINT ON TANGENT	P. O. T.

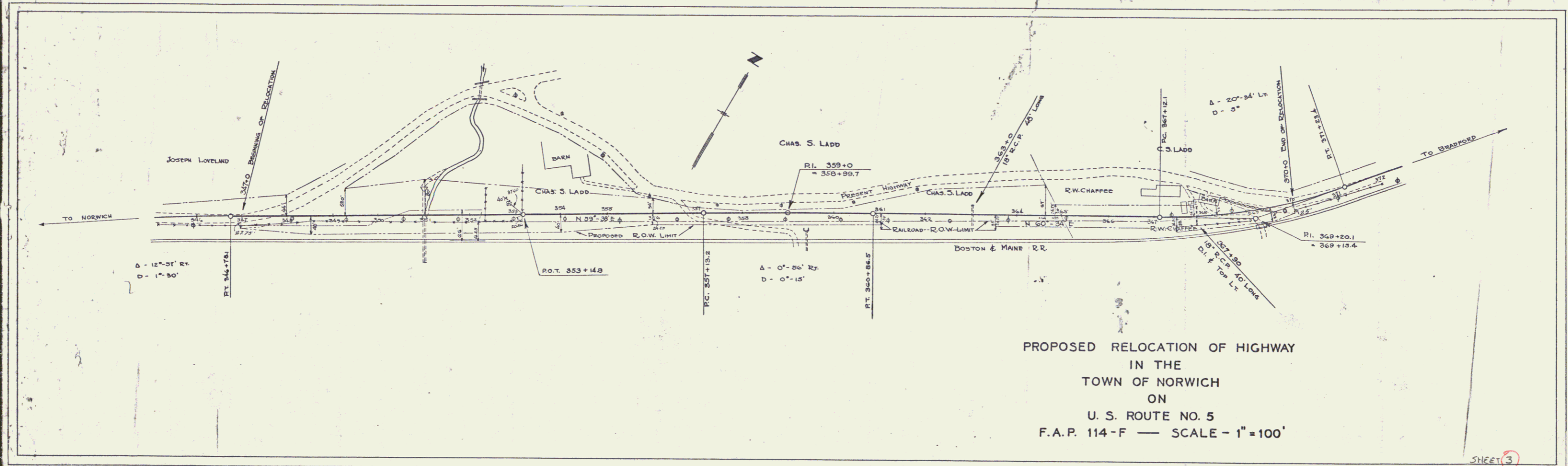
SCALES

TITLE	1" = 500'
PLAN	1" = 50'
PROFILE	1" = 50'
CROSS SECTIONS	1" = 5'

RECOMMENDED FOR APPROVAL: 12/21/00
 APPROVED: [Signature]
 DISTRICT ENGINEER - BUREAU OF PUBLIC ROADS
 CHIEF ENGINEER - BUREAU OF PUBLIC ROADS
 DIRECTOR - BUREAU OF PUBLIC ROADS

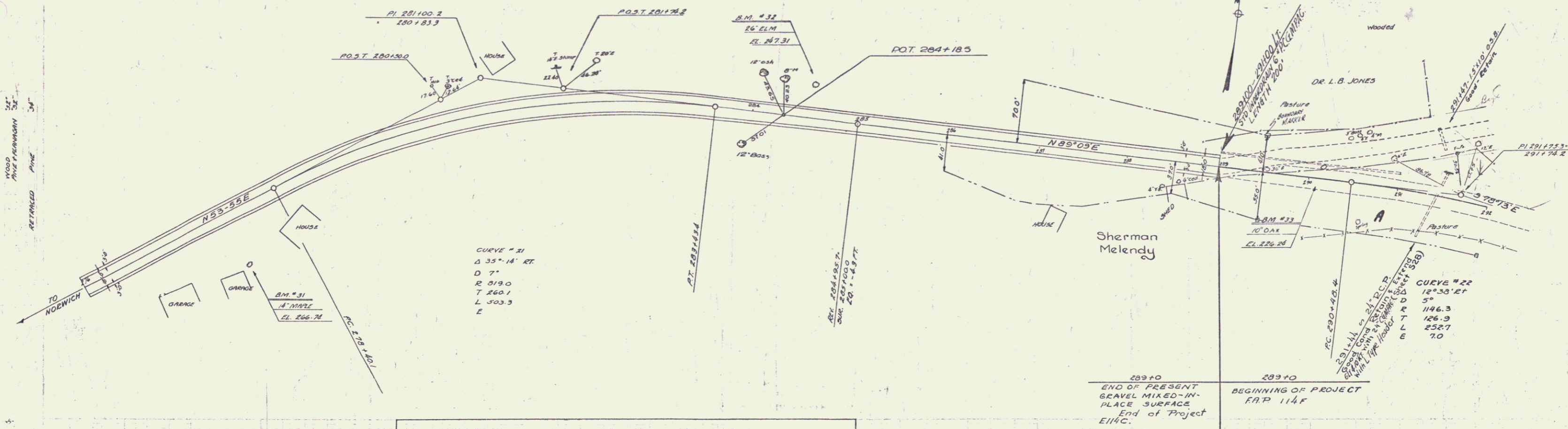
CORRECTED BY: _____
 ROAD ENGINEER
 SERIES FAP NO. 114 F FILED
 SHEET 1 OF 12

DIST. # 4 PLANS



PROPOSED RELOCATION OF HIGHWAY
 IN THE
 TOWN OF NORWICH
 ON
 U. S. ROUTE NO. 5
 F.A.P. 114-F — SCALE — 1"=100'

SHEET 3

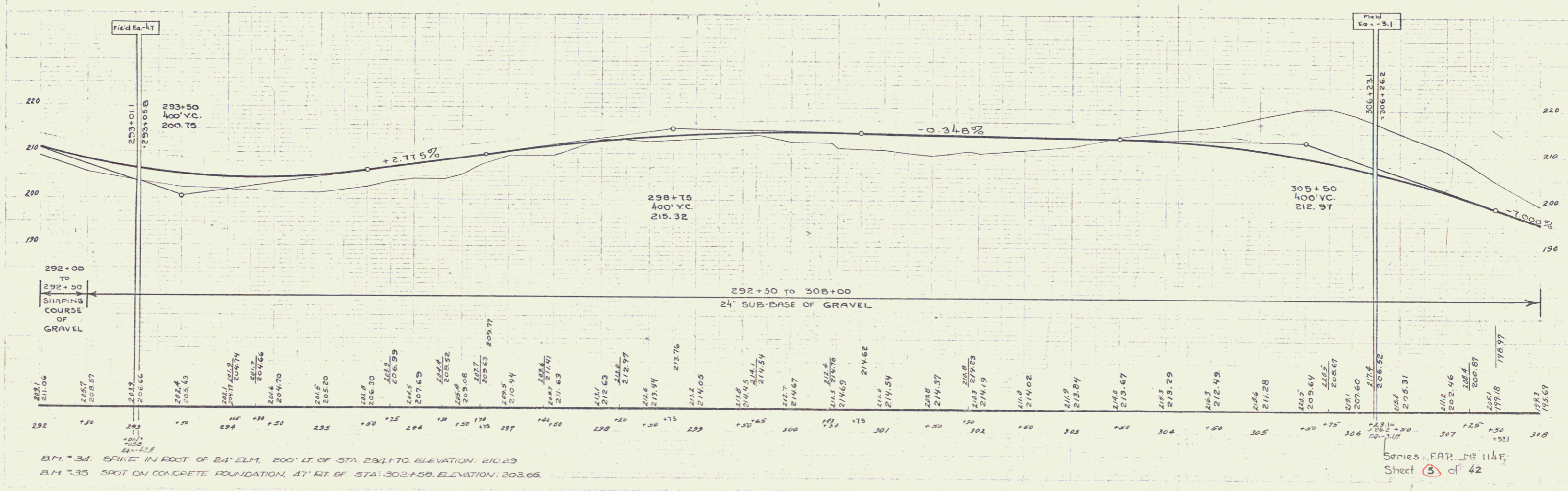
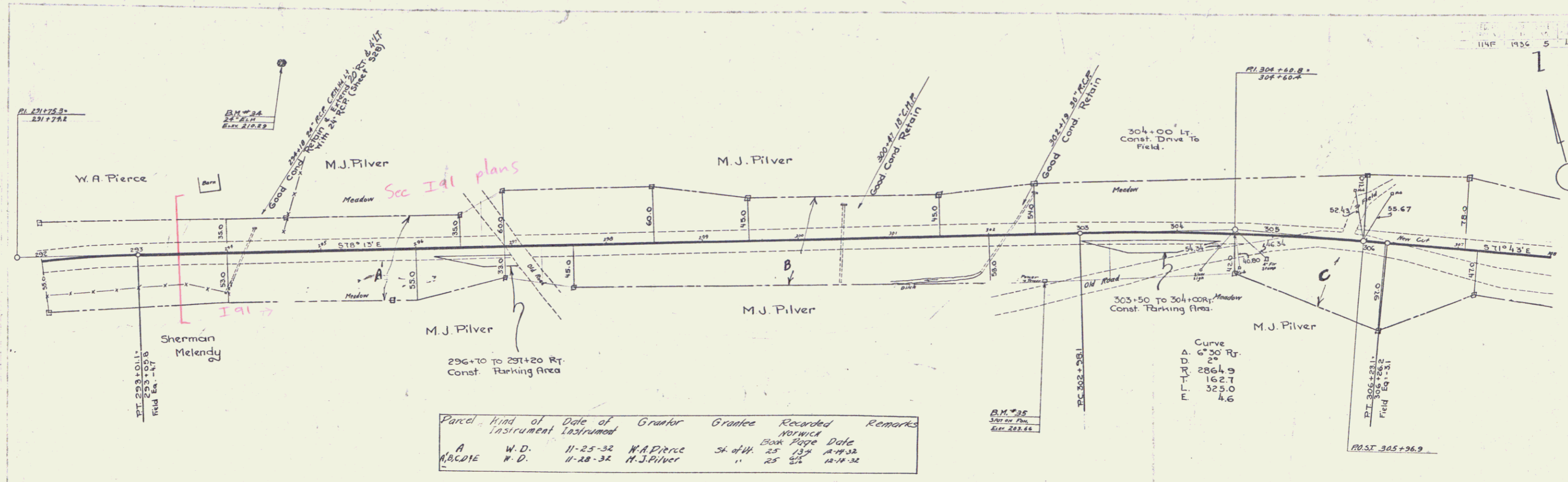


Parcel	Kind of Instrument	Date of Instrument	Grantor	Grantee	Recorded Book	Recorded Page	Date	Remarks
A	W.D.	11-25-32	Sherman Melendy	SI of W	25	133	12-18-32	



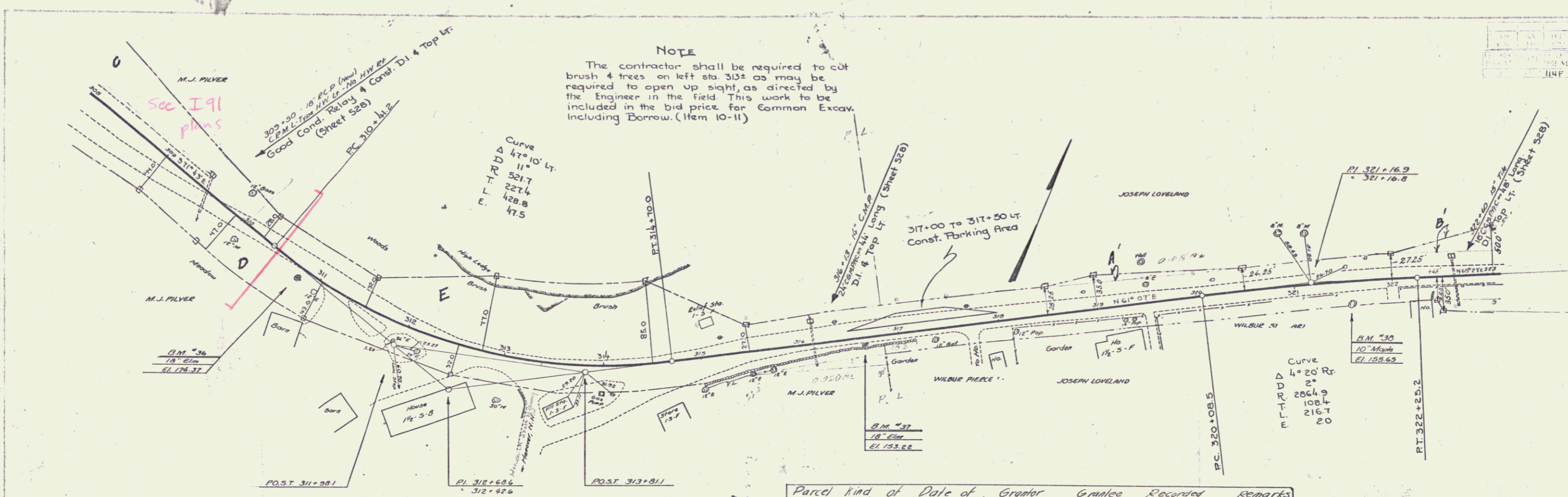
B.M. #31 SPRUCE IN ROOT - 1 1/2" MAPLE, 66 FT RT OF DIA 277169, ELEV 266.74
 B.M. #32 - - - 26" CLM, 37' LT - - - 284126, - 247.31
 B.M. #33 - - - TRUNK - 10" OAK 18' LT - - - 290182, - 226.24

Station	Elevation
286	244.6
287	238.5
288	234.69
289	230.8
290	226.9
291	223.0
292	219.1

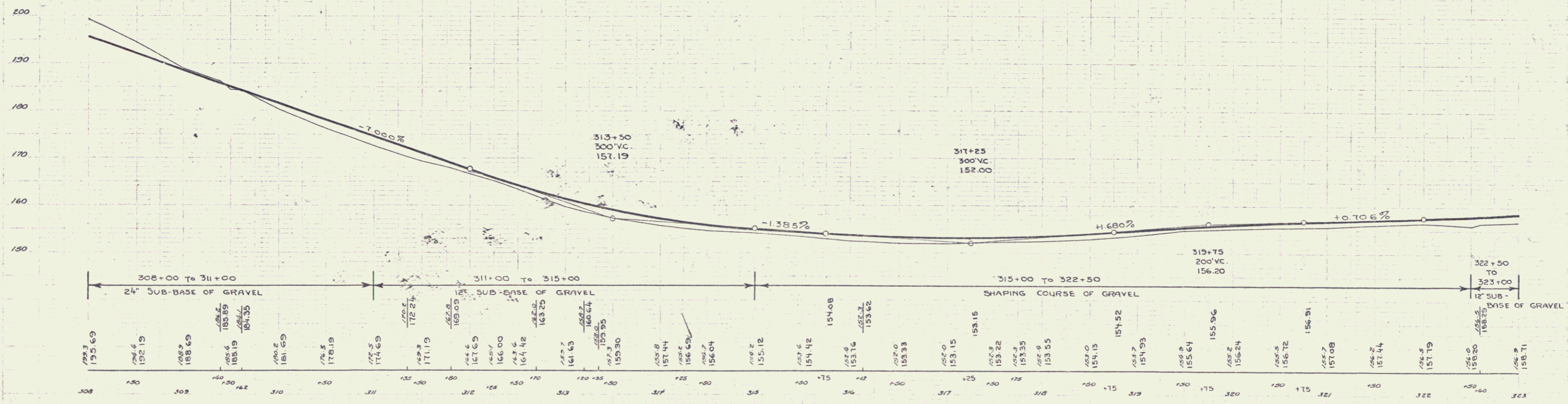


B.M. 34. SPIKE IN FOOT OF 24" ELM. 200' LT. OF STA. 294+70. ELEVATION: 210.29
 B.M. 35. SPOT ON CONCRETE FOUNDATION, 47' RT. OF STA. 302+50. ELEVATION: 203.66.

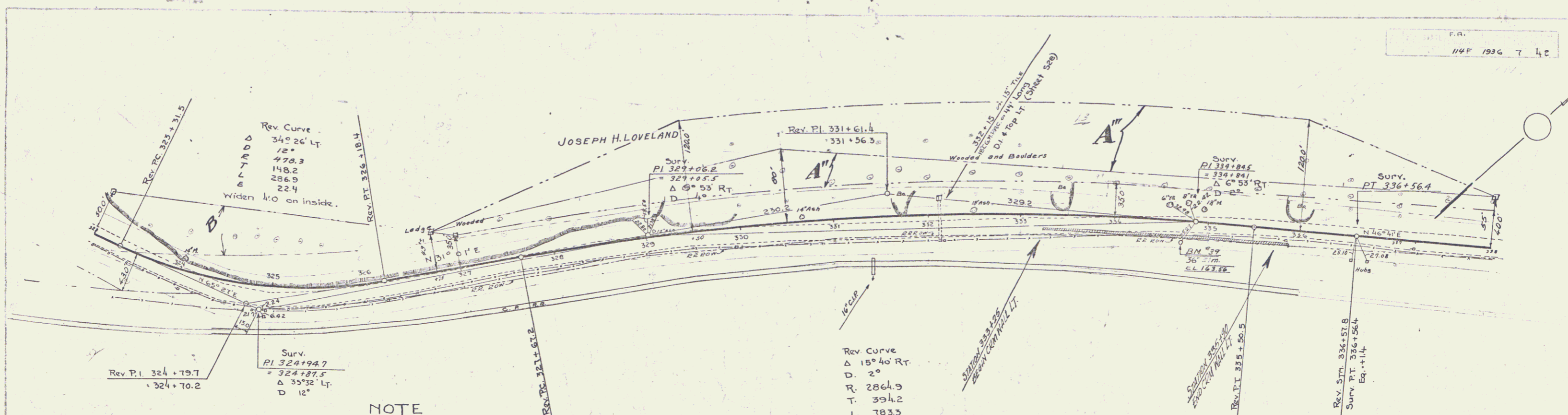
NOTE
 The contractor shall be required to cut brush & trees on left sta. 313+00 may be required to open up sight, as directed by the Engineer in the field. This work to be included in the bid price for Common Excav. including Borrow. (Item 10-11)



Parcel	Kind of Instrument	Date of Grant	Grantor	Grantee	Recorded	Remarks
A.B.C.D.E.	W.D.	11-28-32	M.J. Pilver	St. of Wt.	Book Page Date	25 147-148 12-19-32
A.B.C.D.	Q.C.D.	9-16-35	Joseph A. Loveland	"	25 147-148	9-16-35



B.M. #35 SPIKE IN ROOT OF 18" ELM, 8' RT OF STA: 310+30 ELEVATION: 174.37
 B.M. #37 SPIKE IN ROOT OF 18" ELM, 3' RT OF STA: 316+65 ELEVATION: 153.22
 B.M. #38 SPIKE IN ROOT OF 10" MAPLE, 21' RT OF STA: 321+55 ELEVATION: 155.05



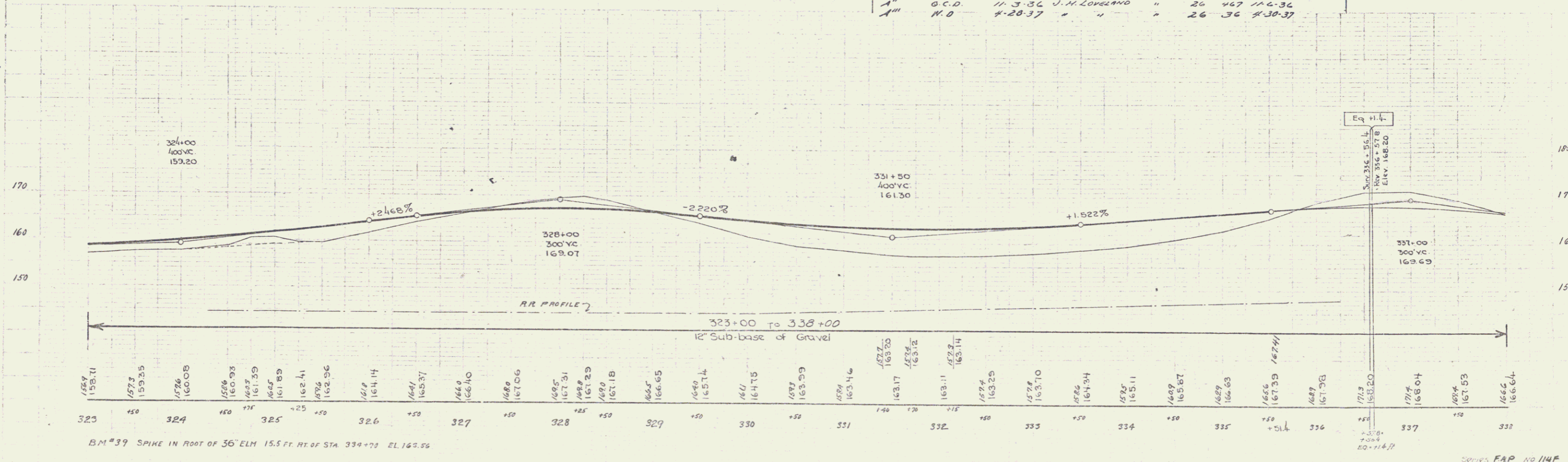
Rev. P.I. 324 + 79.7
= 324 + 70.2

Surv. P.I. 324 + 94.7
= 324 + 87.5
Δ 35° 32' Lt.
D 12°

Rev Curve
Δ 15° 40' Rt.
D 2°
R 2864.9
T 394.2
L 7835
E 27.0

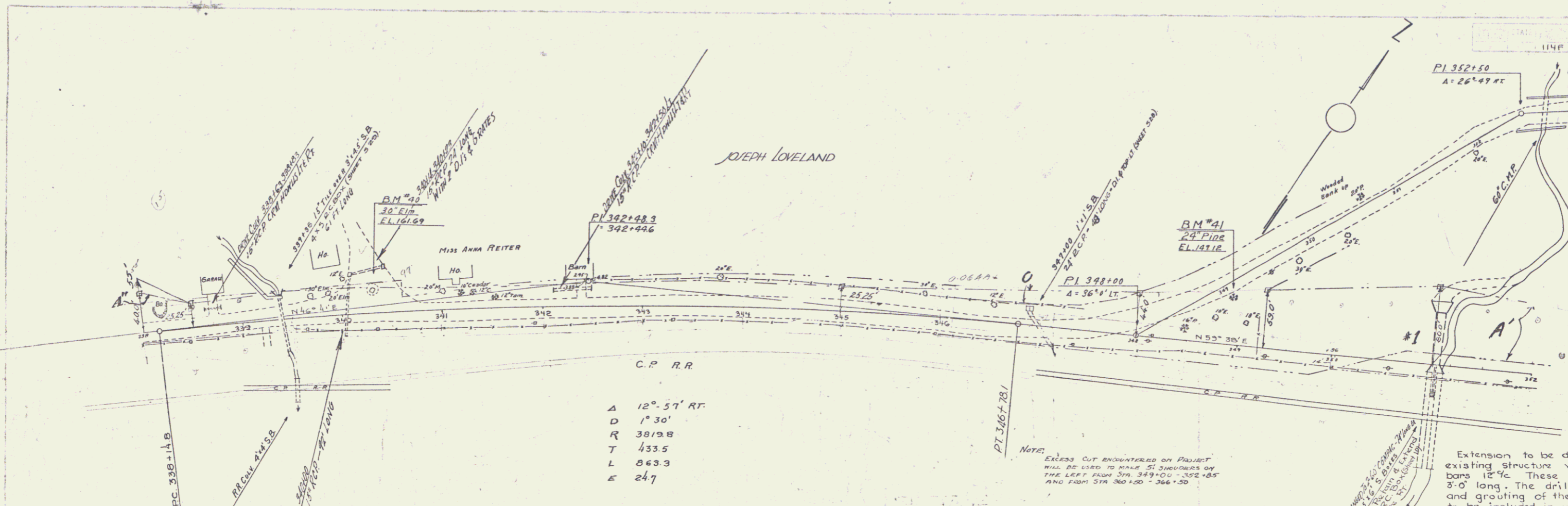
NOTE
Rock obtained on left Sta. 324± to Sta. 337± to be used as rock fill on right Sta. 334± to 339± and any excess to be placed in fill Sta. 348± ahead.
After the rock fill @ Sta. 334± to 339± is made it is to be earth covered to a minimum depth of 6', the same to conform to the neat lines as shown on cross-sections.

Parcel	Kind of Instrument	Date of Instrument	Grantor	Grantee	Recorded	Remarks
A-B-C	O.C.D.	9-10-35	Joseph H. Loveland	Sh. & W.	Book 2390 Page 25	25 207.70 9-16-35
A'	O.C.D.	9-16-35	Wilbur Stewart	"	25 710	9-16-35
A''	O.C.D.	11-3-36	J. H. Loveland	"	26 467	11-6-36
A'''	N.O.	4-28-37	"	"	26 36	4-30-37

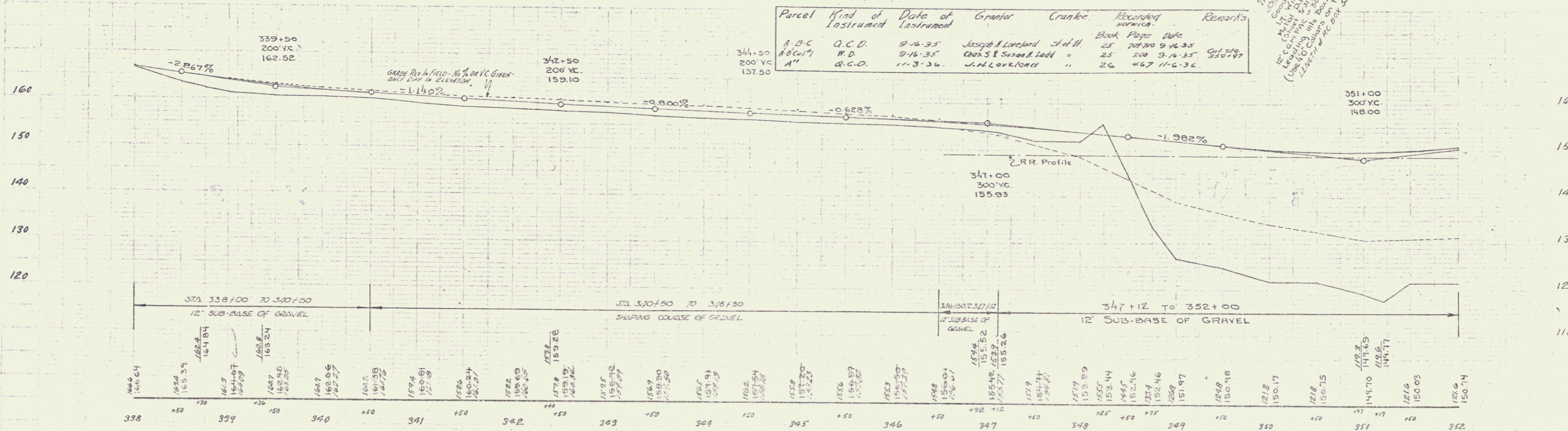


BM #39 SPIKE IN ROOT OF 36" ELM 15.5 FT. HT. OF STA 334+73 EL. 162.26

6



Parcel	Kind of Instrument	Date of Instrument	Grantor	Cranke	Recorded	Remarks
A, B, C	O.C.D.	9-16-35	Joseph Loveland	3rd fl.	Book Page Date	
A, B, C, D	W.D.	9-16-35	Charles I. Sorenson	1st fl.	25 24770 9-16-35	CL 314
A	O.C.D.	11-3-36	J.H. Loveland	"	26 467 11-6-36	350+47



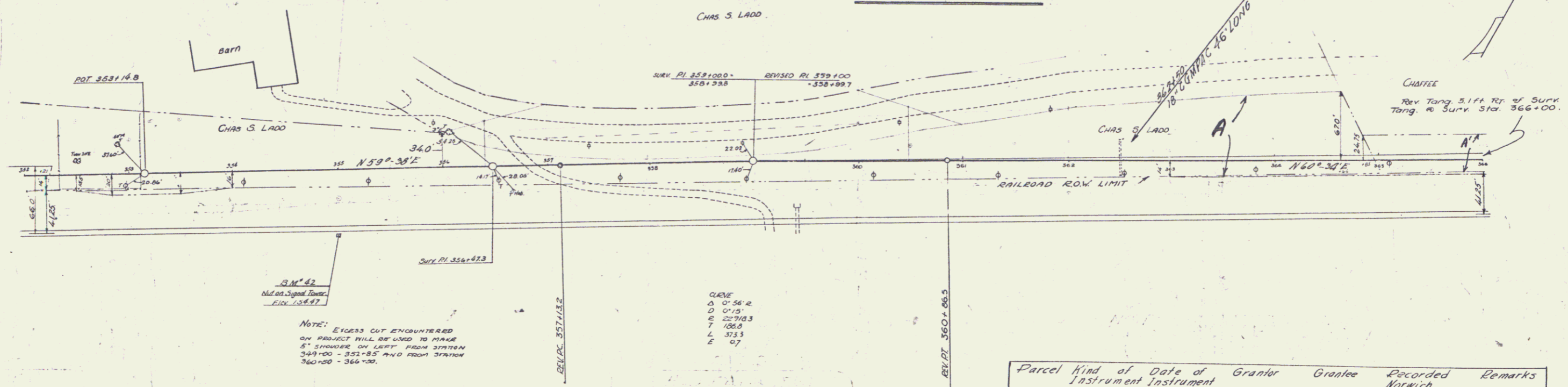
NOTE: EXCESS CUT ENCOUNTERED ON PROFILE WILL BE USED TO MAKE 5' SHOULDER ON THE LEFT FROM STA. 349+00 TO 352+85 AND FROM STA. 350+00 TO 352+50.

Extension to be dowelled to existing structure with 3/8" def. bars 12" c/c. These dowels to be 3'-0" long. The drilling, placing, and grouting of these dowels to be included in unit bid price for reinforcing steel.

BM #40 SPIKE IN ROOT OF 30' ELM 23 FT LT. OF STA. 340+31, EL. 161.69
 BM #41 " " " 24' PINE 77 FT LT. OF STA. 348+19, EL. 149.12

NOTE
Sta. 354+25 - 354+70
TOP OF BLADE TO BE AT LEAST
25' DISTANT FROM END OF BRICK

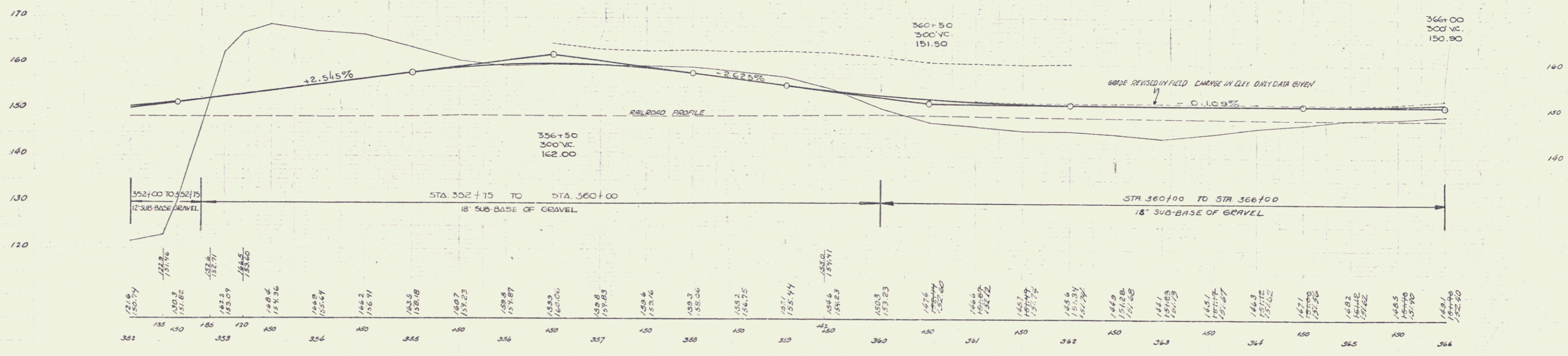
NOTE - APPROACH TO OLD ROAD
TO BE GRADED -



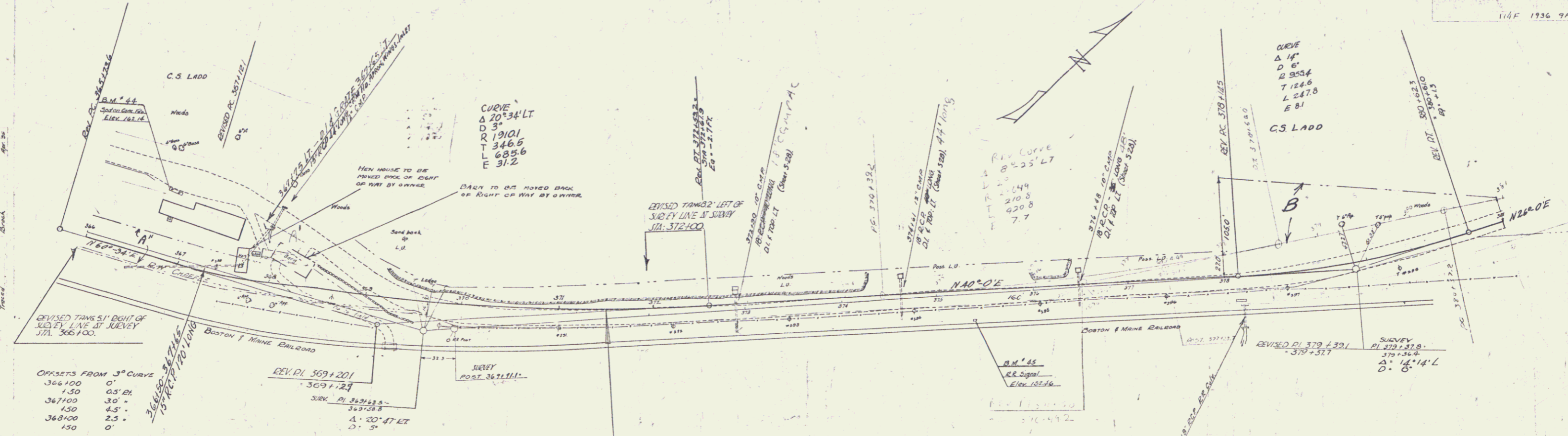
NOTE: EXCESS CUT ENCOUNTERED
ON PROJECT WILL BE USED TO FILL
8" STRIPES ON LEFT FROM STATION
349+00 - 352+85 AND FROM STATION
360+00 - 366+00.

CLIFF
A 0' 56" R
D 0' 12"
E 22' 03"
F 106.0
L 355.8
E 07

Parcel	Kind of Instrument	Date of Grant	Grantor	Grantee	Recorded	Remarks
A-B	Lot #1	N.D.	9-16-35	Chas S & Susan Ladd	St. of N.	Book Page Date
A		N.D.	9-16-35	R.W. Coffey & Hoyt Judd	25 199	9-16-35



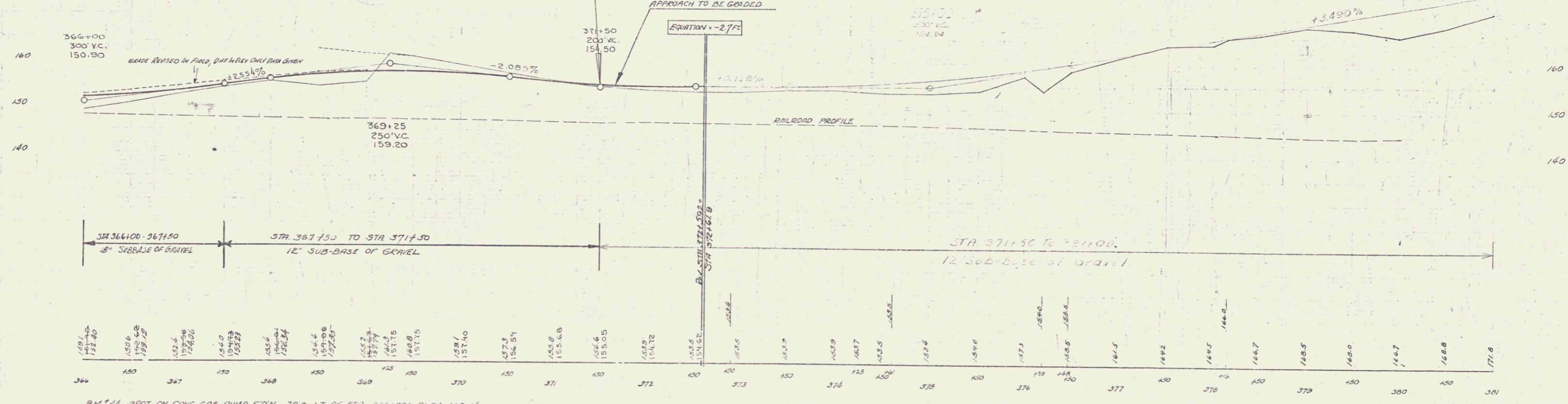
B.M. #42 NOT ON SIGNAL TOWER 65' E RT OF STA 355+00 ELEV 154.47



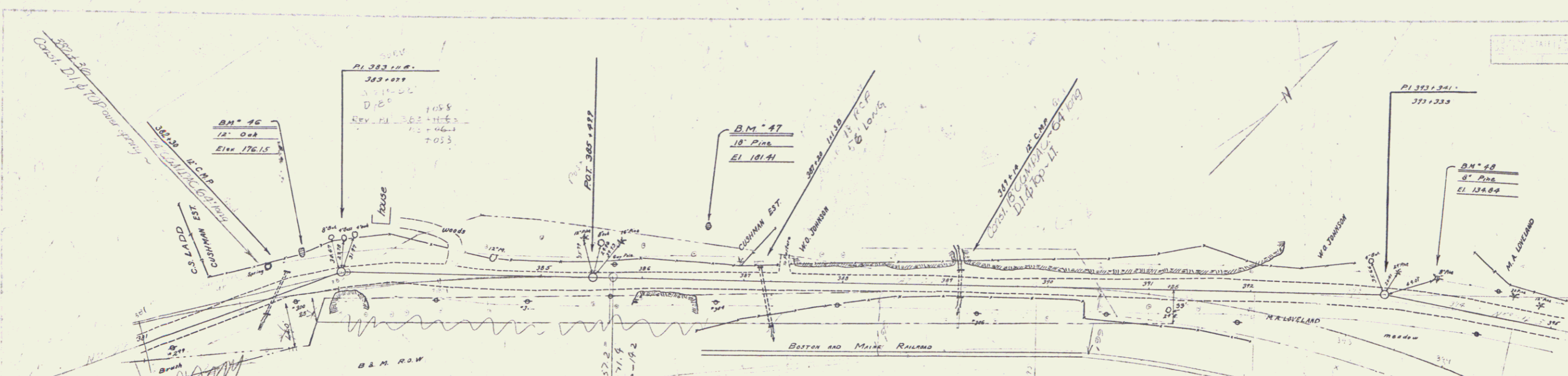
OFFSETS FROM 3° CURVE

366+00	0'
130	0.5'
367+00	3.0'
150	4.5'
368+00	2.5'
150	0'

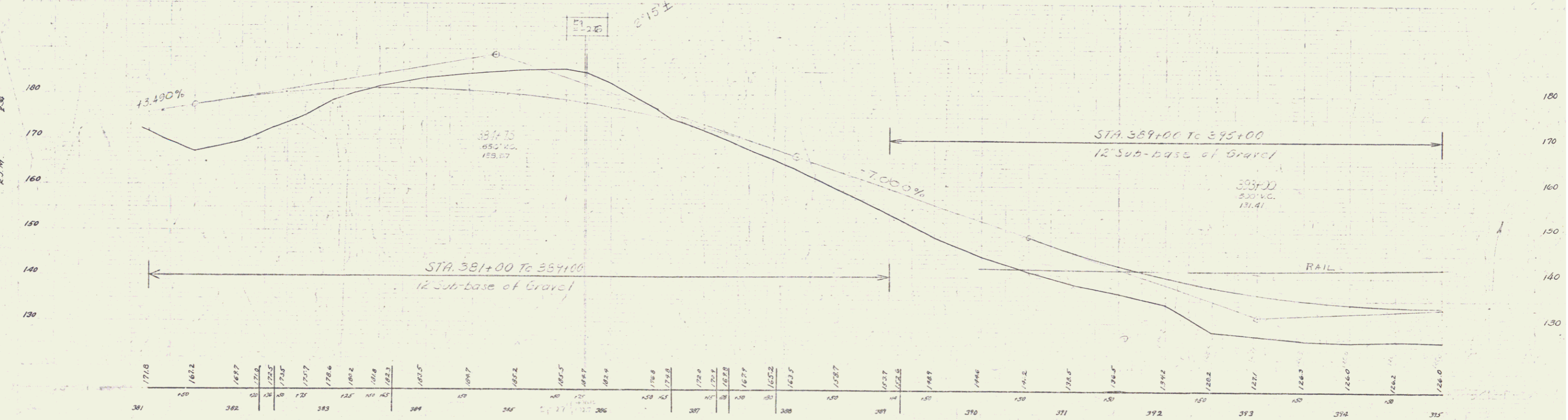
Parcel	Kind of Instrument	Date of Instrument	Grantor	Grantee	Recorded	Remarks
A-B	W.D.	9-16-35	Chris S. Susan Ladd	St. H. R. S.	240	9-16-35
A'	W.D.	1-11-36	Roy & Marie Chaffee	"	209	1-11-36
A''	W.D.	9-16-35	R. W. Chaffee & Mary J. July	"	199	9-16-35



BM #44 SPOT ON CONC. GAS PUMP FOUN. 70' LT. OF STA 366+00 ELEV. 142.14
 BM #45 BOLT ON TOP OF RR SIGNAL TOWER CASING 25 FT. RT. OF STA 375+30 ELEV. 152.46



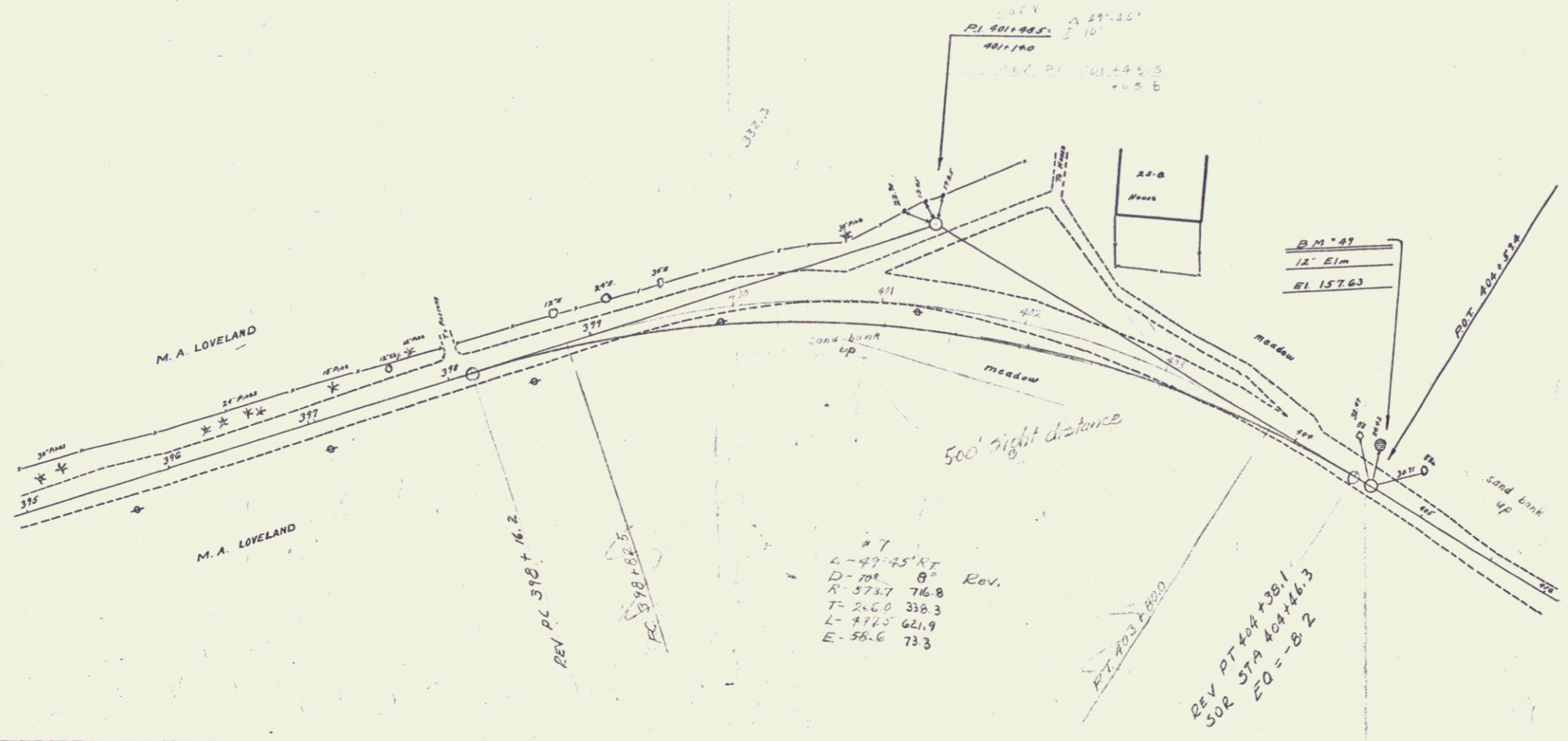
CURVE
 Δ 15° 30' RT
 D 30
 R 1910.1
 T 261.6
 L 500.0
 E 17.8



BM* 26 3" x 6" nail 12' Oak 12' 31' STA 382+00 Elev 176.15
 BM* 47 " " " 18' Pine 12' 30' STA 386+00 Elev 181.41
 BM* 28 " " " 8' Pine 12' 25' STA 393+79 Elev 134.84

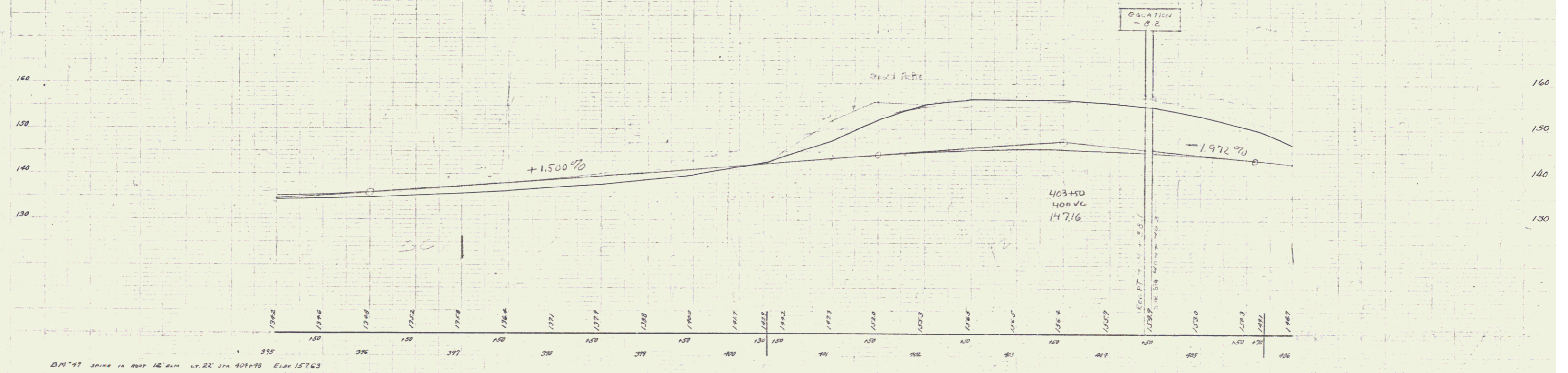
1-3
 2-3
 3-3
 4-3
 5-3
 6-3
 7-3
 8-3
 9-3
 10-3
 11-3
 12-3
 13-3
 14-3
 15-3
 16-3
 17-3
 18-3
 19-3
 20-3
 21-3
 22-3
 23-3
 24-3
 25-3
 26-3
 27-3
 28-3
 29-3
 30-3
 31-3
 32-3
 33-3
 34-3
 35-3
 36-3
 37-3
 38-3
 39-3
 40-3
 41-3
 42-3
 43-3
 44-3
 45-3
 46-3
 47-3
 48-3
 49-3
 50-3
 51-3
 52-3
 53-3
 54-3
 55-3
 56-3
 57-3
 58-3
 59-3
 60-3
 61-3
 62-3
 63-3
 64-3
 65-3
 66-3
 67-3
 68-3
 69-3
 70-3
 71-3
 72-3
 73-3
 74-3
 75-3
 76-3
 77-3
 78-3
 79-3
 80-3
 81-3
 82-3
 83-3
 84-3
 85-3
 86-3
 87-3
 88-3
 89-3
 90-3
 91-3
 92-3
 93-3
 94-3
 95-3
 96-3
 97-3
 98-3
 99-3
 100-3

1-3
 2-3
 3-3
 4-3
 5-3
 6-3
 7-3
 8-3
 9-3
 10-3
 11-3
 12-3
 13-3
 14-3
 15-3
 16-3
 17-3
 18-3
 19-3
 20-3
 21-3
 22-3
 23-3
 24-3
 25-3
 26-3
 27-3
 28-3
 29-3
 30-3
 31-3
 32-3
 33-3
 34-3
 35-3
 36-3
 37-3
 38-3
 39-3
 40-3
 41-3
 42-3
 43-3
 44-3
 45-3
 46-3
 47-3
 48-3
 49-3
 50-3
 51-3
 52-3
 53-3
 54-3
 55-3
 56-3
 57-3
 58-3
 59-3
 60-3
 61-3
 62-3
 63-3
 64-3
 65-3
 66-3
 67-3
 68-3
 69-3
 70-3
 71-3
 72-3
 73-3
 74-3
 75-3
 76-3
 77-3
 78-3
 79-3
 80-3
 81-3
 82-3
 83-3
 84-3
 85-3
 86-3
 87-3
 88-3
 89-3
 90-3
 91-3
 92-3
 93-3
 94-3
 95-3
 96-3
 97-3
 98-3
 99-3
 100-3

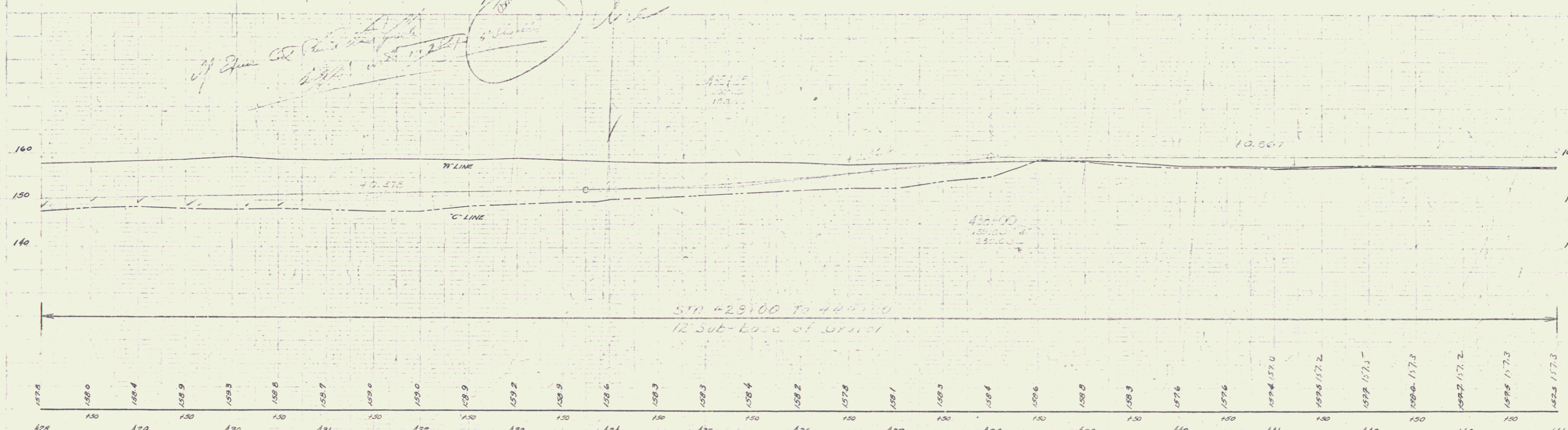
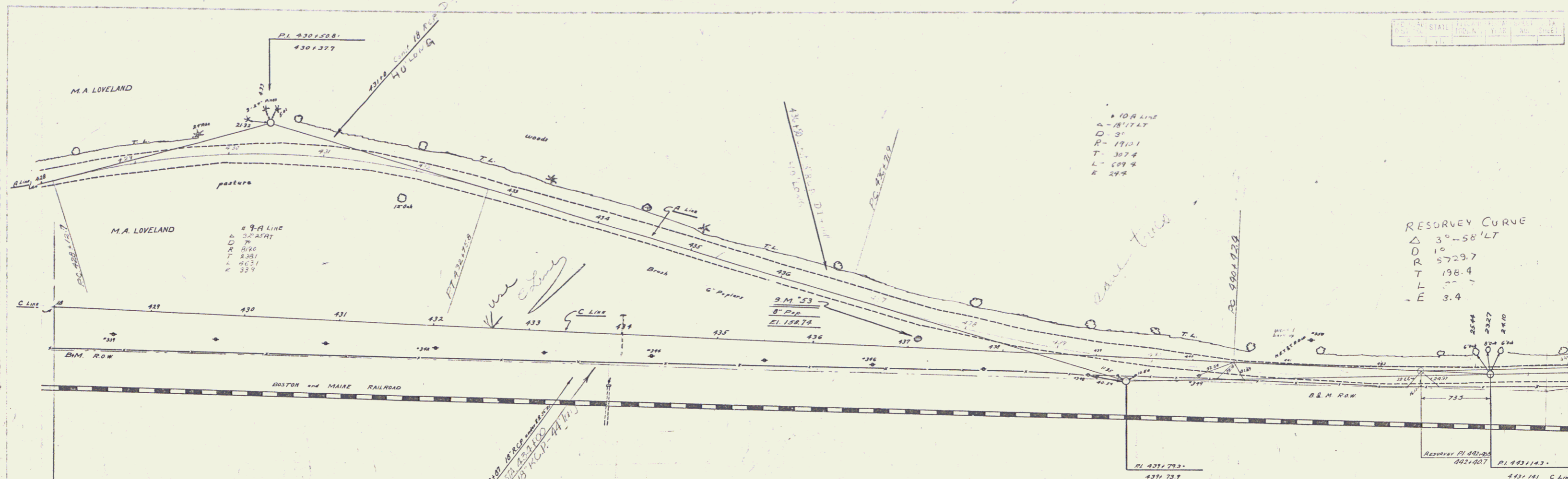


#7
 L-49-25' RT
 D-70' 8"
 R-573.7 716.8
 T-26.0 338.3
 L-97.5 661.9
 E-56.6 73.3

REV PT 404+38.1
 SOR 404+46.3
 Z.O. = -8.2



BM 47 spike in roof 12' E.I.M. L.V. 22' Sta 401+78 Elev 15763



B.M. # 53 - SPIKE IN TRUNK OF 8" PIPER - 24 FT. RT. STA. 231153 EL. 158.74
 STA. 423100 TO 440100
 12 Sub-Base of Gravel
 SERIES 14 NO. 14 OF

