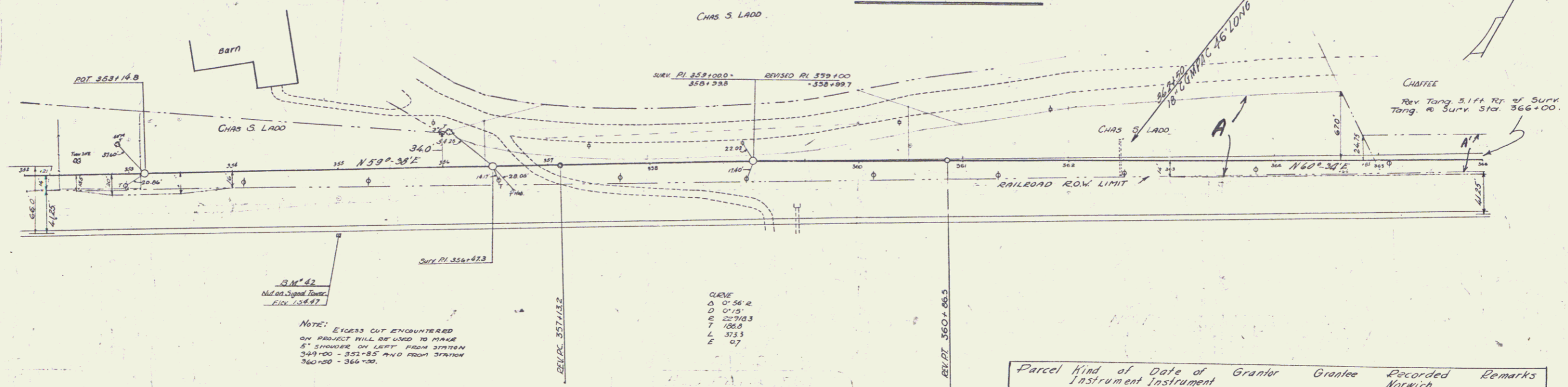


NOTE
Sta. 354+25 - 354+70
TOP OF BLADE TO BE AT LEAST
23' DISTANT FROM END OF BRICK

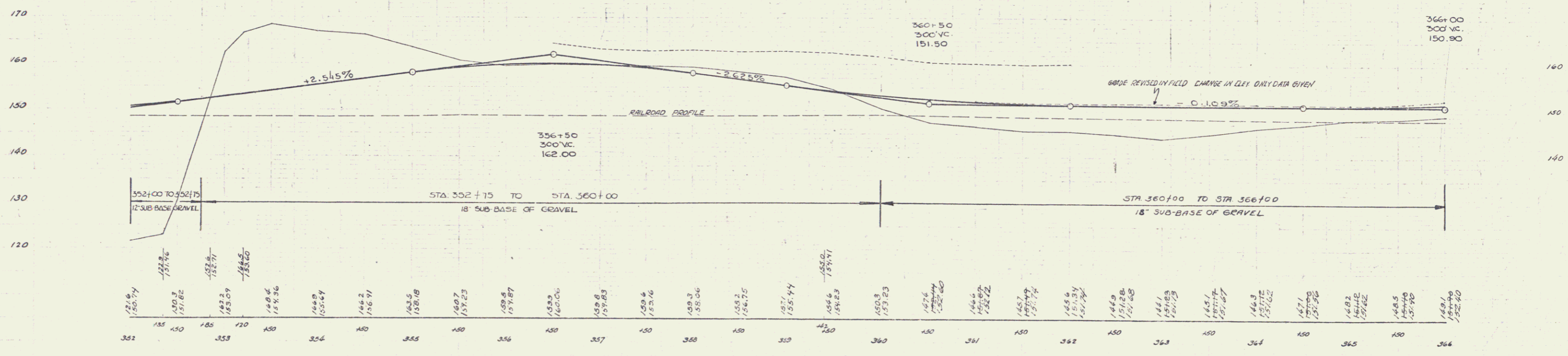
NOTE - APPROACH TO OLD ROAD
TO BE GRADED



NOTE: EXCESS CUT ENCOUNTERED
ON PROJECT WILL BE USED TO FILL
8" STRIPES ON LEFT FROM STATION
349+00 - 352+85 AND FROM STATION
360+00 - 366+00.

CLIFF
A 0' 56" R
D 0' 12"
E 22' 03"
F 106.0
L 355.8
E 07

Parcel	Kind of Instrument	Date of Grant	Grantor	Grantee	Recorded	Remarks
A-B cut #1	N.D.	9-16-35	Chas S Ladd	St of N	Book 25 Page 200	9-16-35
A	N.D.	9-16-35	R W Chamfee & Hoyt Judd	"	25 199	9-16-35



B.M. #42 NUT ON SIGNAL TOWER 65' E RT OF STA 355+00 ELEV 154.47