

**INDEX OF SHEETS**

SHEET NO	TITLE PAGE
1	TITLE PAGE
2	TYPICAL CROSS-SECTION OF IMPROVEMENT (BITUMINOUS CONCRETE PAVEMENT, ITEM 361-B)
3	BANKING & WIDENING TABLES
4	QUANTITY SHEET (ITEMS)
5	QUANTITY SHEET (DRAINAGE)
6-9	EARTHWORK SHEETS
10-21	PLAN AND PROFILE SHEETS
22	CONSTRUCTION DETAILS CD (DRAINAGE AND MARKERS)
23	CONSTRUCTION DETAILS CD-2 (TYPICAL GRADINGS)
24	STANDARD STRUCTURE SHEET S-40 (BARRICADES, SIGNS, AND LIGHTS)
25	STANDARD STRUCTURE SHEET S-48-46 (THREE CABLE GUARD RAIL)
26	STANDARD STRUCTURE SHEET S-53-48 (PRECAST CONCRETE PIPE DROP INLET)
27	PRELIMINARY INFORMATION SHEET
28	PLAN
29	PROFILE
30	EARTHWORK SHEET
31	ABUTMENTS 1 AND 2-PLAN, ELEVATION AND DETAILS
32	PIER ELEVATIONS
33	PIER DETAILS
34	SUPERSTRUCTURE LAYOUT
35	SUPERSTRUCTURE DETAILS
36	DETAIL SHEET-RAILING, SOUPPERS, CURB AND END PARTS
37	REINFORCING STEEL DETAILS
38	STANDARD SHEET 98-20 (DETAILS L1 AND L2)
39	STANDARD SHEET 98-11 (BARRICADES, SIGNS, AND LIGHTS) FOR BRIDGES
40-42	CHANNEL SECTIONS
43-103	CROSS-SECTIONS

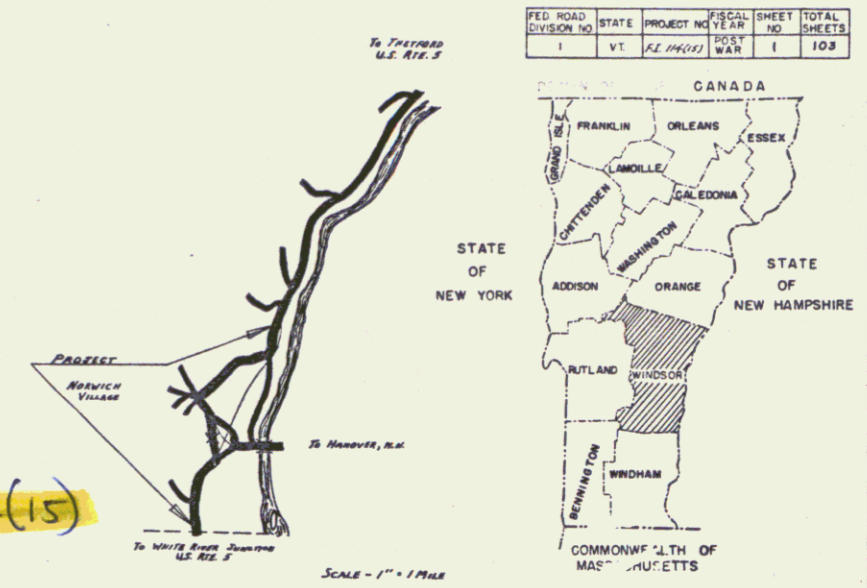
**STATE OF VERMONT  
DEPARTMENT OF HIGHWAYS**

**PROPOSED IMPROVEMENT**  
FEDERAL INTERSTATE PROJECT  
**TOWN OF NORWICH**  
COUNTY OF WINDSOR  
WHITE RIVER JCT. - THETFORD ROAD  
**U.S. ROUTE 5**

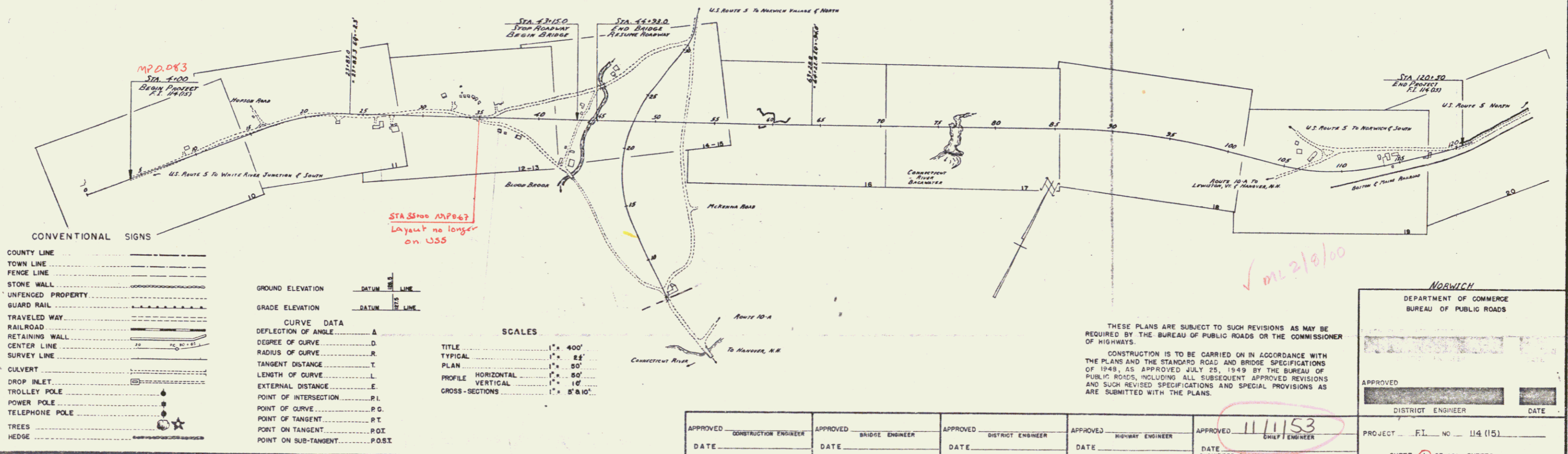
BEGINNING AT A POINT APPROXIMATELY 6500 FEET NORTH OF THE HARTFORD-NORWICH TOWN LINE AND EXTENDING NORTHEASTERLY 11,553.7 FEET.

LENGTH OF ROADWAY 11,375.7 FT. = 2.154 MILES  
LENGTH OF BRIDGE 178.0 FT. = 0.034 MILE  
LENGTH OF PROJECT 11,553.7 FT. = 2.188 MILES

Project: FI 114(15)  
Pin# 99R311



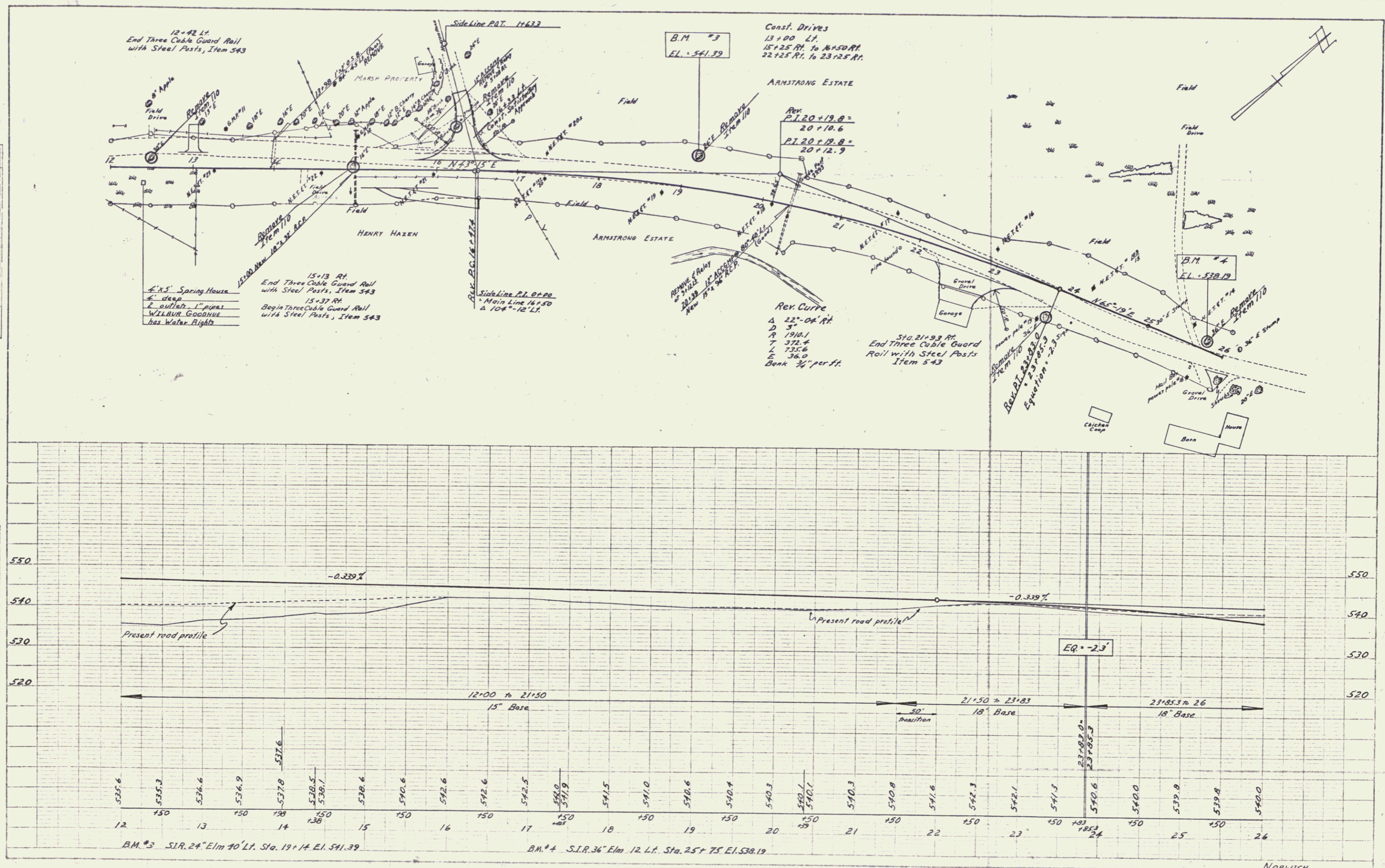
Historical  
RIGHT-OF-WAY DIVISION  
TOWN FILE  
PERPETUAL  
Town of U.S.  
(To Be Returned To R.O.W. Division)

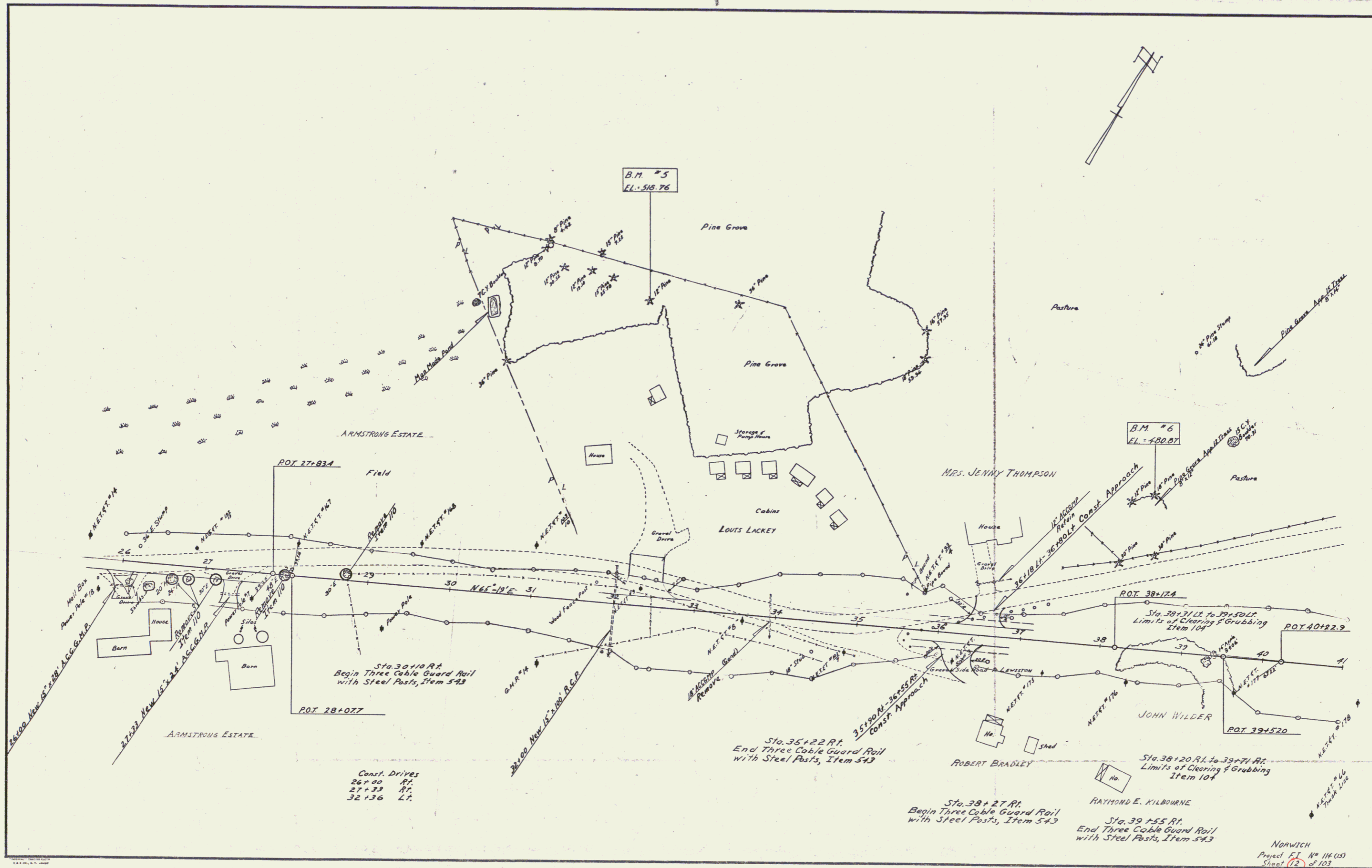




PLAN  
 DRAWN BY  
 R. B. BERRY  
 CHECKED BY  
 H. B. BERRY  
 DATE  
 10/1/1914

PROFILE  
 DRAWN BY  
 R. B. BERRY  
 CHECKED BY  
 H. B. BERRY  
 DATE  
 10/1/1914

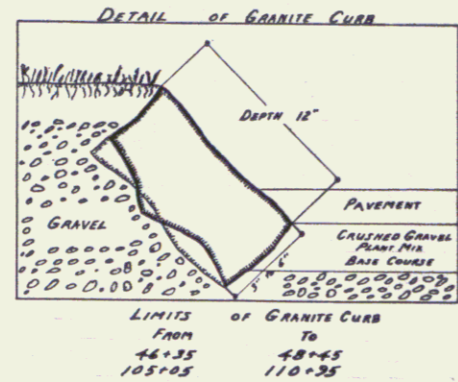




Const. Drives

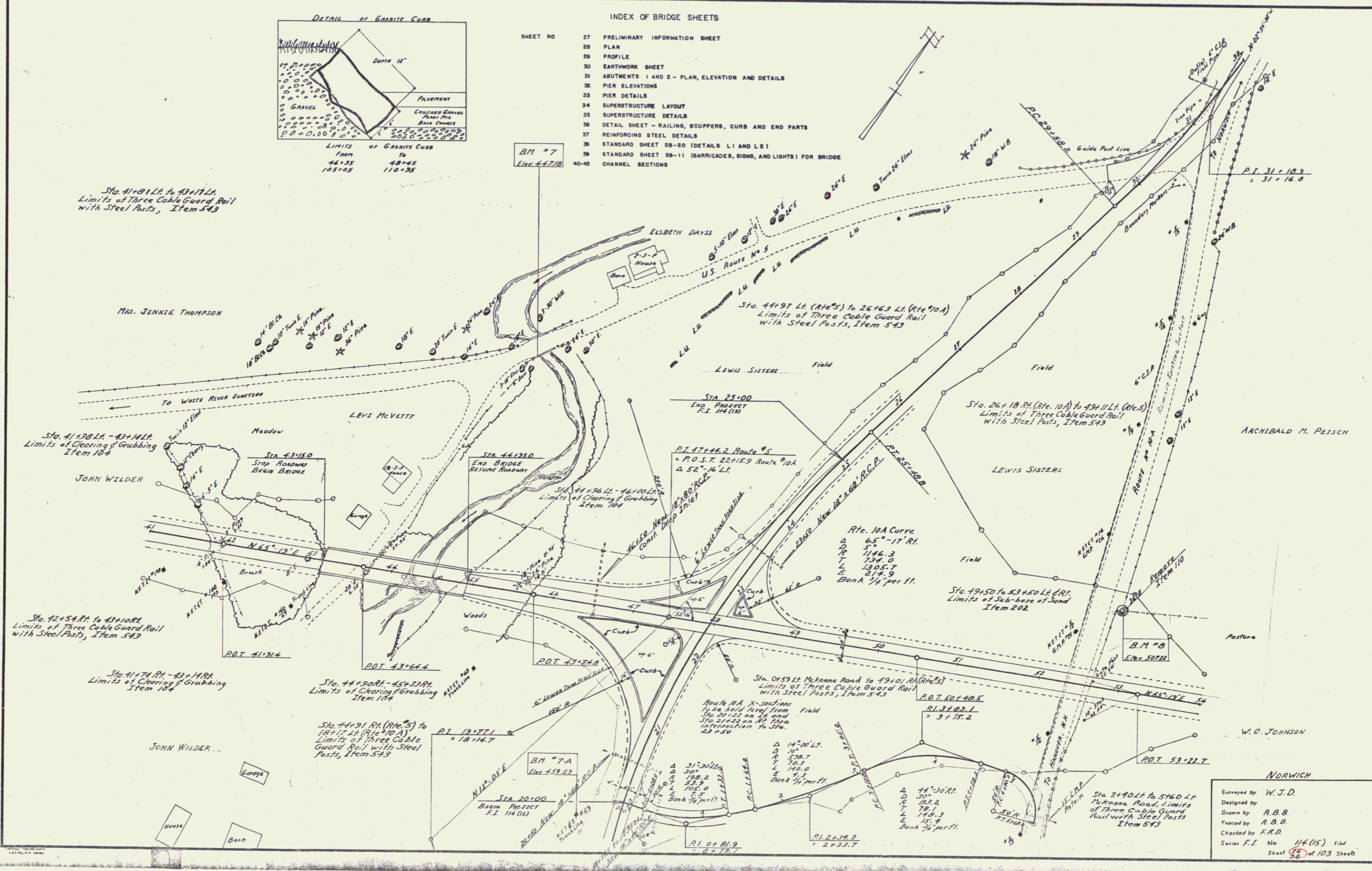
26+00	R.L.
27+33	R.L.
32+36	L.L.

NORWICH  
 Project 51, No. 14 (US)  
 Sheet 12 of 103



**INDEX OF BRIDGE SHEETS**

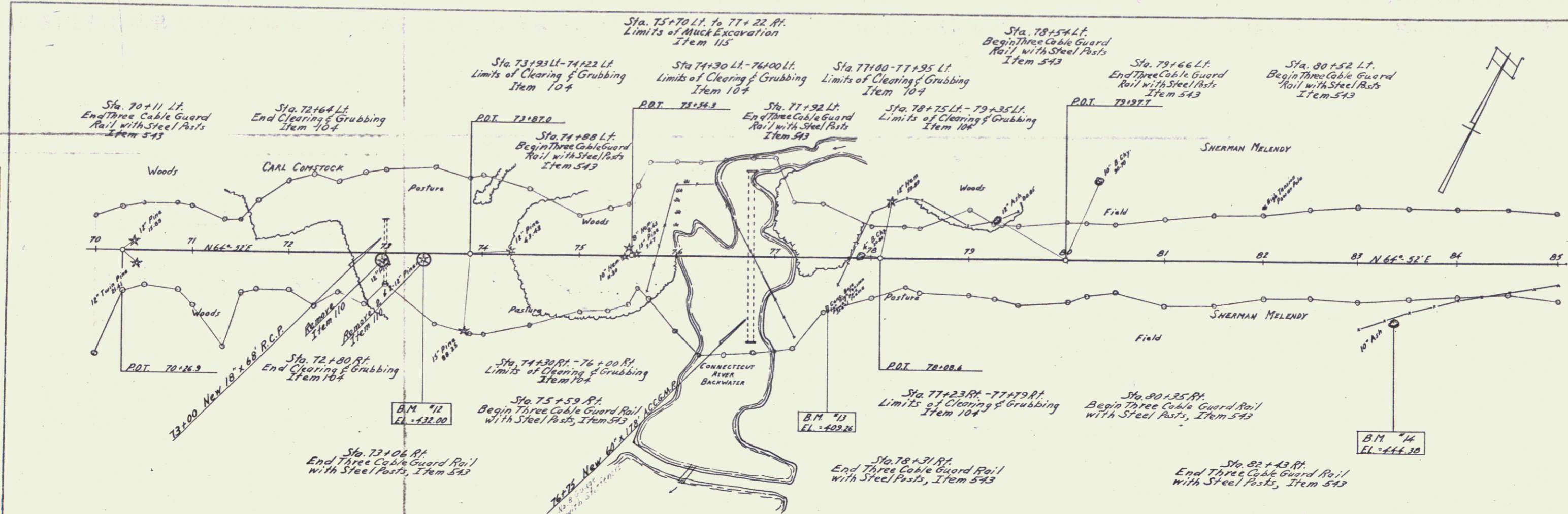
SHEET NO	DESCRIPTION
27	PRELIMINARY INFORMATION SHEET
28	PLAN
29	PROFILE
30	EARTHWORK SHEET
31	ABUTMENTS 1 AND 2 - PLAN, ELEVATION AND DETAILS
32	PIER ELEVATIONS
33	PIER DETAILS
34	SUPERSTRUCTURE LAYOUT
35	SUPERSTRUCTURE DETAILS
36	DETAIL SHEET - RAILING, SCUPPERS, CURB AND END PARTS
37	REINFORCING STEEL DETAILS
38	STANDARD SHEET SB-20 (DETAILS L1 AND L2)
39	STANDARD SHEET SB-11 (BARRICADES, SIGNS, AND LIGHTS) FOR BRIDGE
40-42	CHANNEL SECTIONS



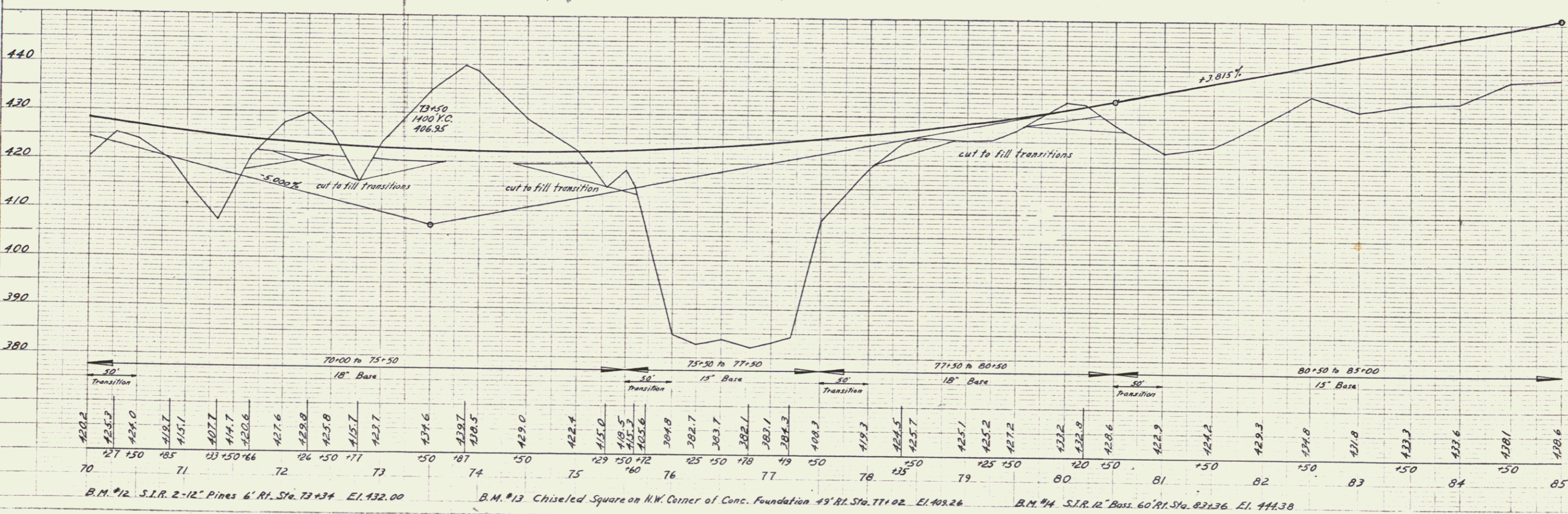




PLAN  
 DATE 10/13/11  
 DRAWN BY W. J. Deery  
 CHECKED BY W. J. Deery  
 SCALE 1" = 40'

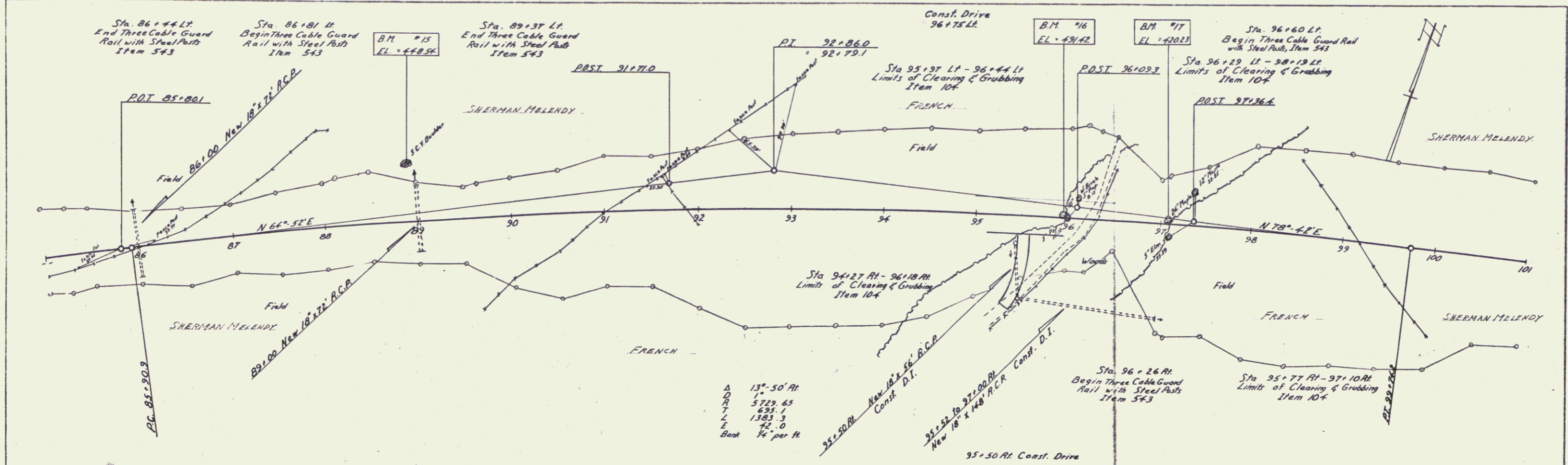


PROFILE  
 DATE 10/13/11  
 DRAWN BY W. J. Deery  
 CHECKED BY W. J. Deery  
 SCALE 1" = 40'



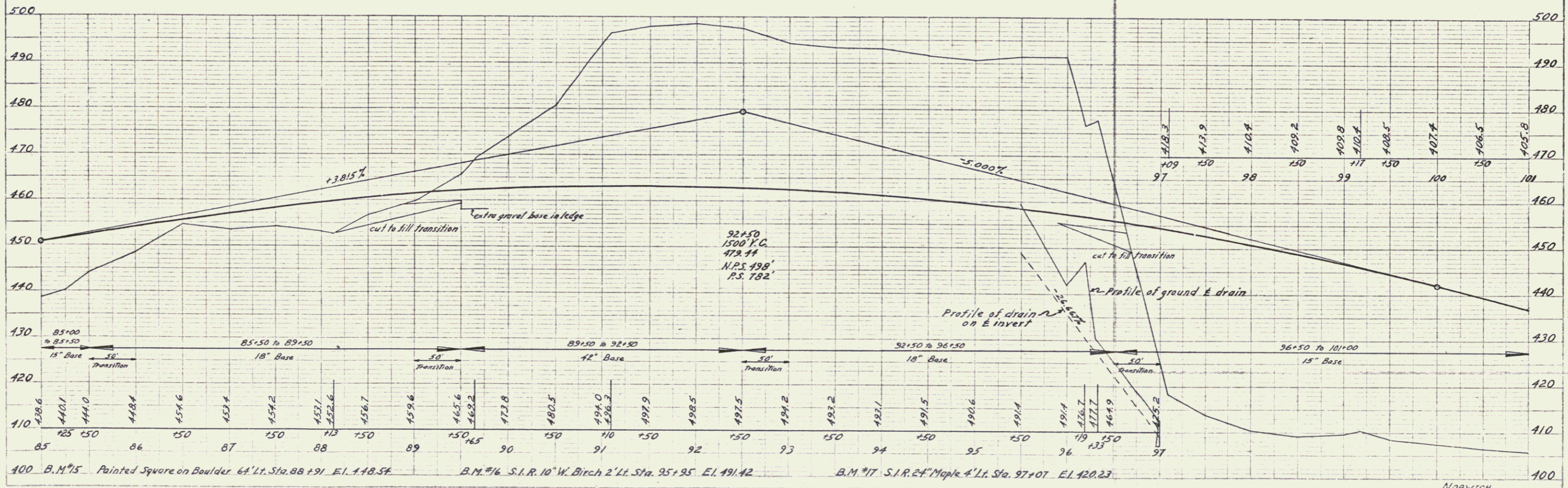
B.M. #12 S.I.R. 2-12" Pines 6' Rt. Sta. 73+34 El. 432.00  
 B.M. #13 Chiseled Square on NW Corner of Conc. Foundation 49' Rt. Sta. 77+02 El. 409.26  
 B.M. #14 S.I.R. 12" Bass 60' Rt. Sta. 82+36 El. 444.38

PLAN  
 DATE BOOK  
 W.P. Barry  
 1953



Δ  
 13°-50' Alt  
 5729.65  
 635.1  
 1383.3  
 72.0  
 Bank 1/4" per ft

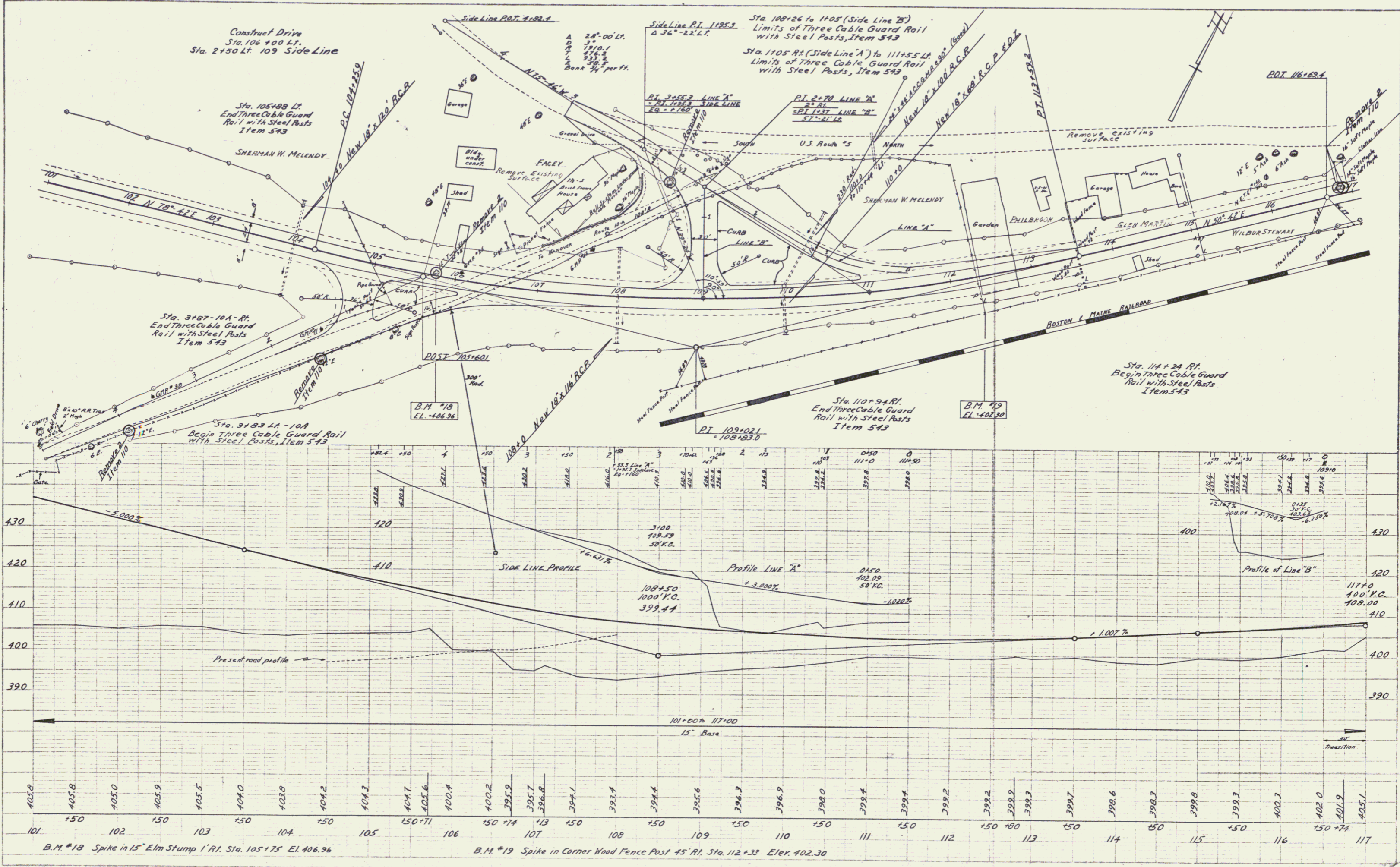
PROFILE  
 DATE BOOK  
 W.P. Barry  
 1953



85	125	150	86	150	87	150	88	150	89	150	90	150	91	150	92	150	93	150	94	150	95	150	96	150	97				
438.6	440.1	441.0	448.4	454.6	453.4	454.2	453.1	452.6	456.7	459.6	465.6	463.2	472.8	480.5	494.0	496.2	498.5	497.5	494.2	493.2	493.1	491.5	490.6	491.4	491.4	486.7	477.7	465.9	465.2

PLAN  
 DRAWN BY: W. J. BARNES  
 CHECKED BY: H. B. BARRETT  
 DATE: 1/17/1917

PROFILE  
 DRAWN BY: W. J. BARNES  
 CHECKED BY: H. B. BARRETT  
 DATE: 1/17/1917

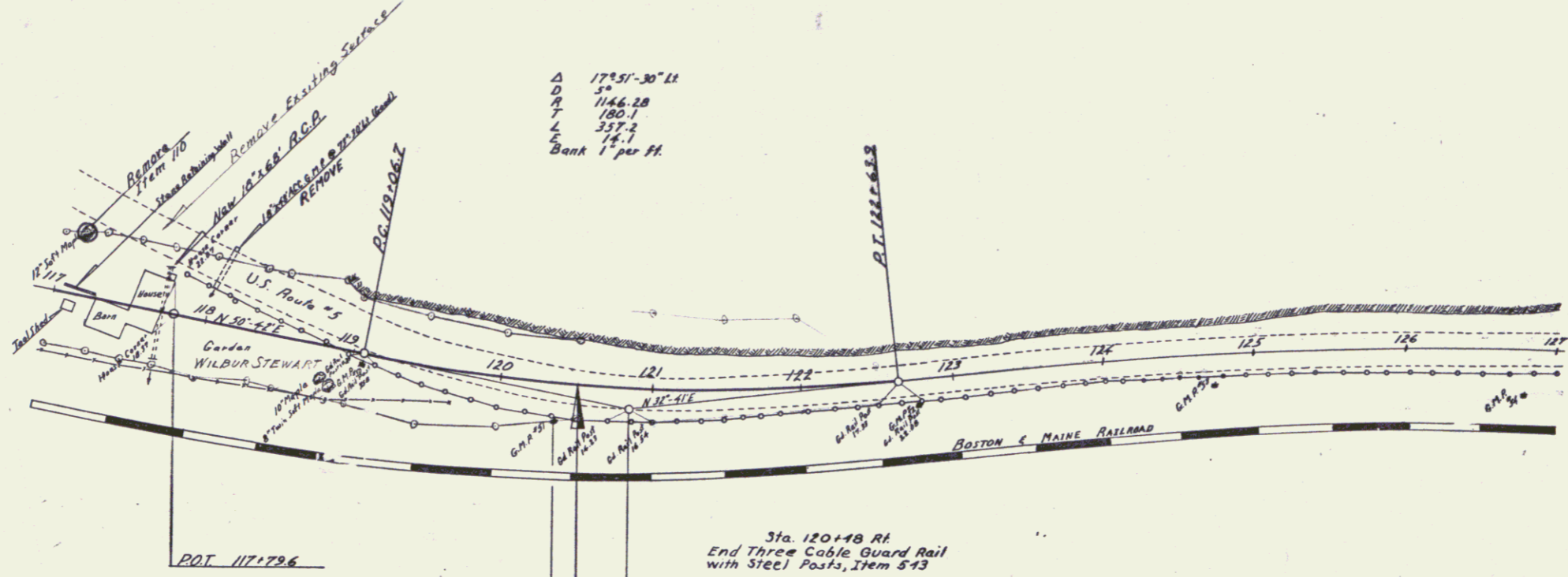


NORWICH  
 Project F.L. No. 116 (105)  
 Sheet 19 of 103

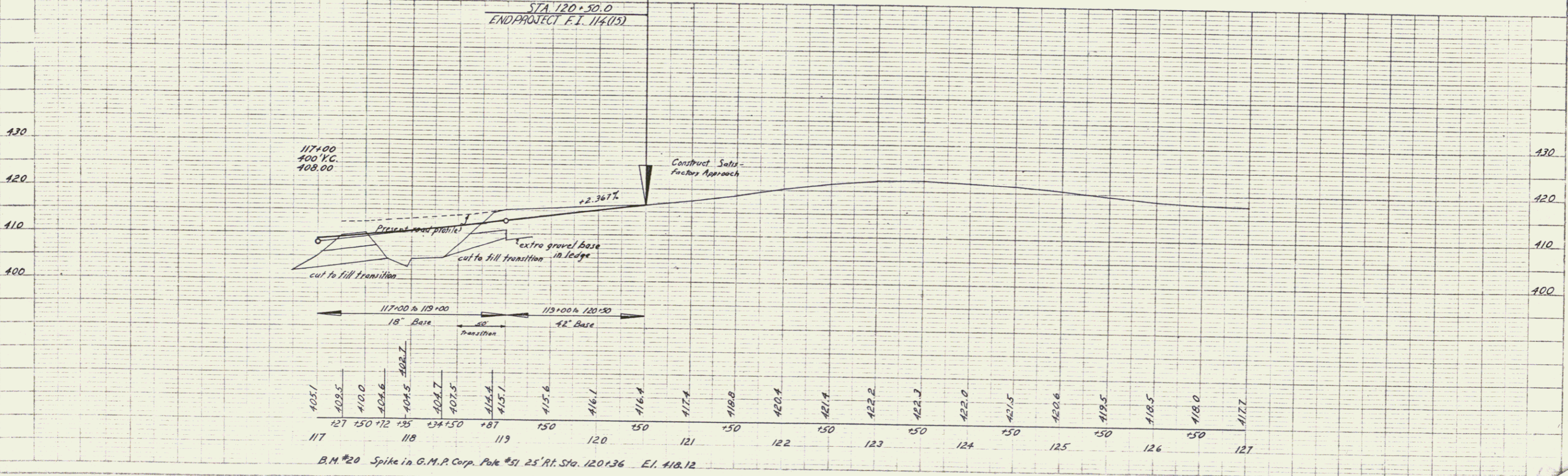
PLAN  
 W. G. Deane  
 1/13

PROFILE  
 W. G. Deane  
 1/13

Δ 1731'-30" L  
 D 50  
 P 1146.28  
 Y 180.1  
 Z 357.3  
 E 14.1  
 Bank 1" per Ft.

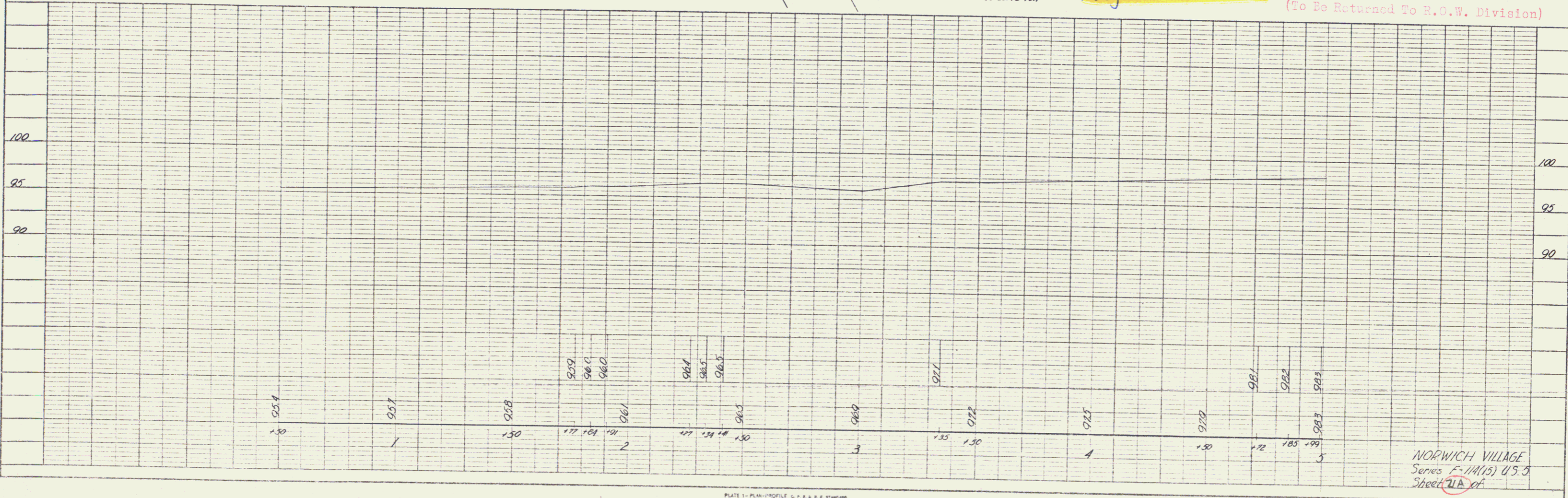
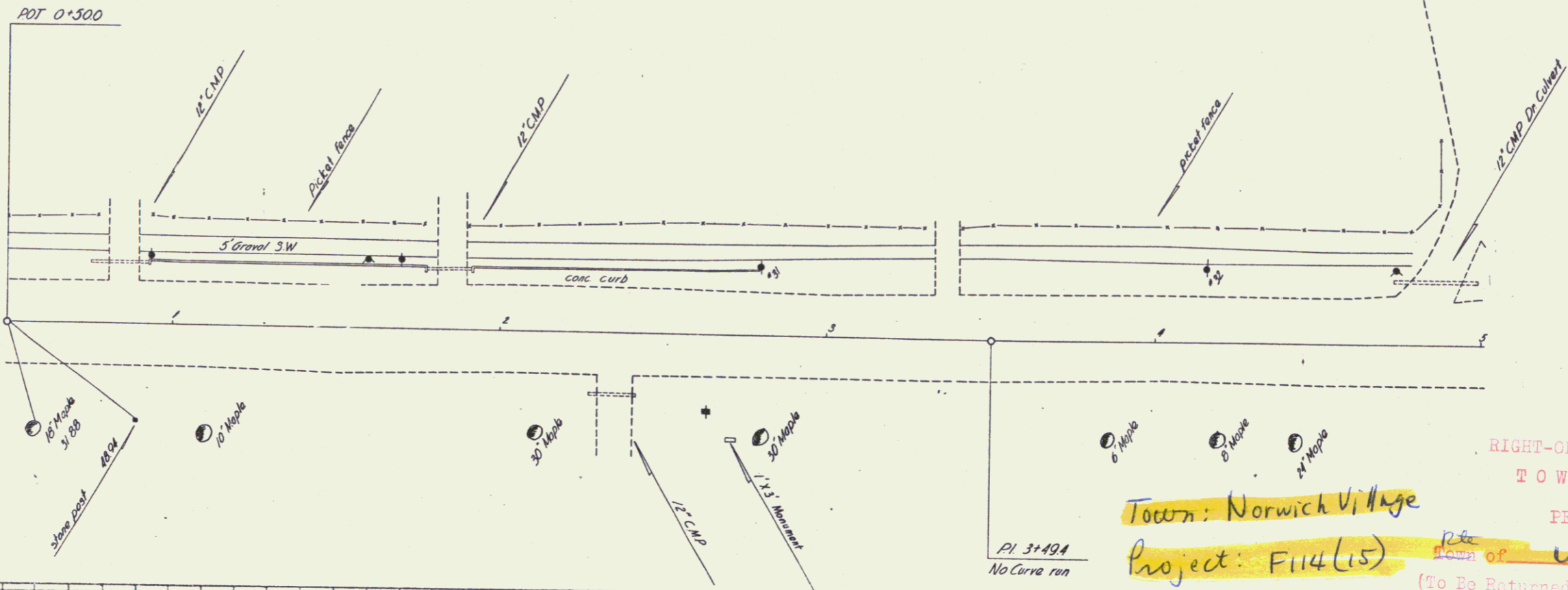


STA 120+50.0  
 END PROJECT F.I. 114.15



PLAN  
 CHECKED BY: [Signature]  
 DATE: 8-31-18  
 DRAWN BY: [Signature]  
 DATE: 8-31-18

PROFILE  
 CHECKED BY: [Signature]  
 DATE: 8-31-18  
 DRAWN BY: [Signature]  
 DATE: 8-31-18



NORWICH VILLAGE  
 Series F-114(15) U.S. 5  
 Sheet 21A of 21

PLAN  
 SHEET NO. 21B  
 DATE 8-57  
 DRAWN BY Spalding  
 CHECKED BY Palmer  
 TITLE ROAD  
 NO. 101-101

PROFILE  
 SHEET NO. 21B  
 DATE 8-57  
 DRAWN BY Spalding  
 CHECKED BY Palmer  
 TITLE ROAD  
 NO. 101-101

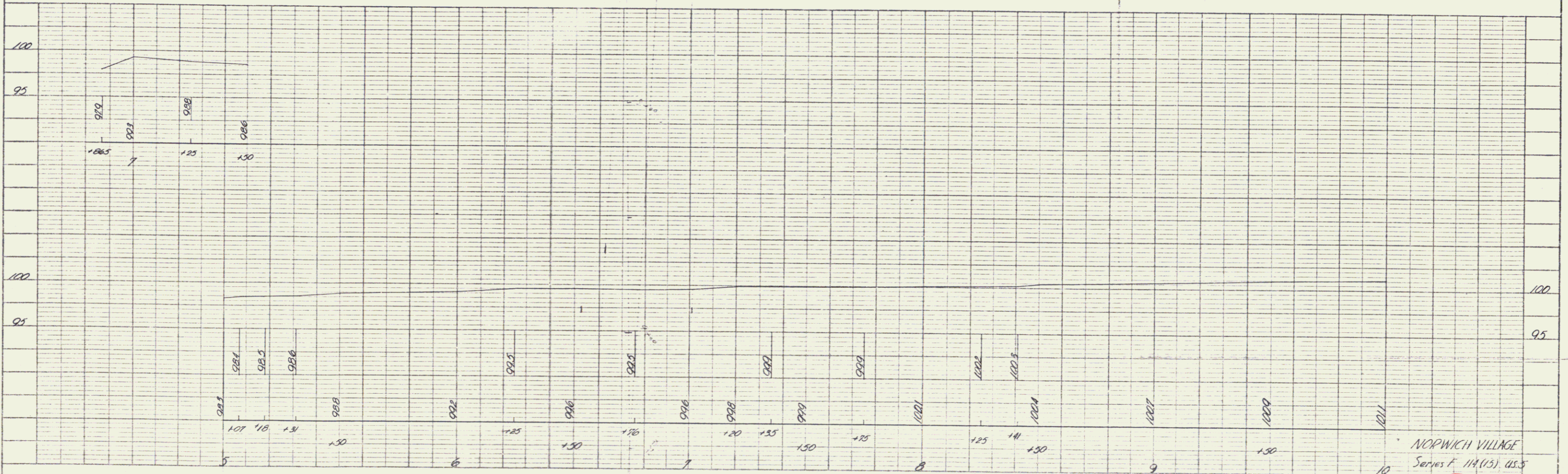
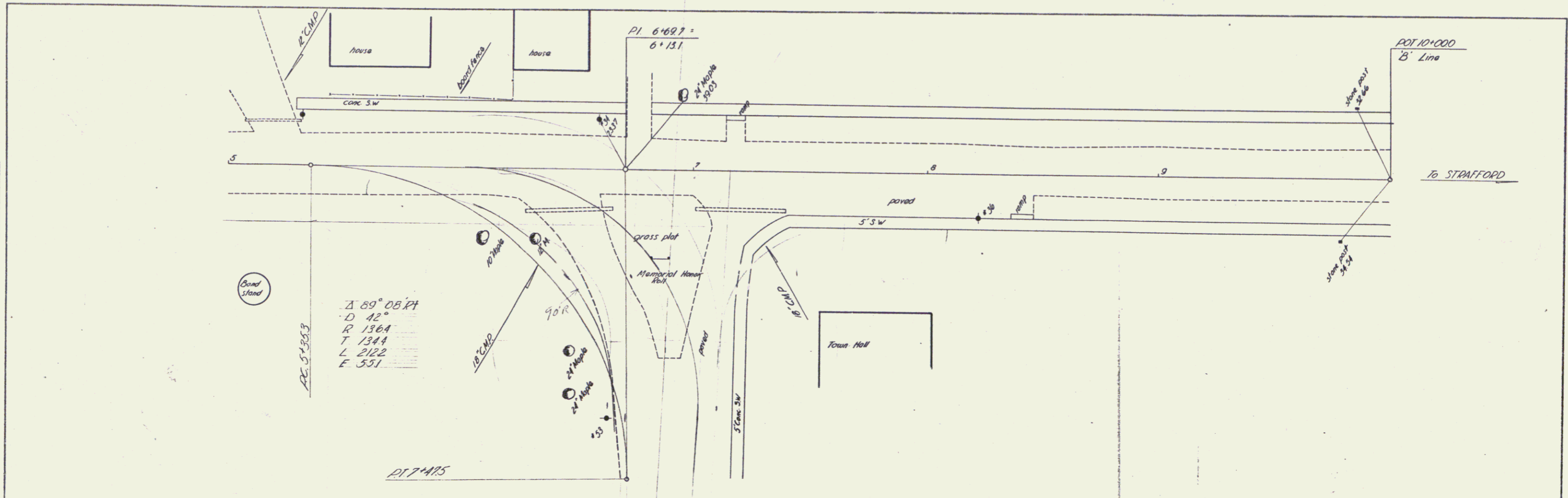


PLATE 1 - PLAN - PROFILE OF P.A.R. & E. STAMM  
 DRAWN BY SPALDING  
 CHECKED BY PALMER

NORWICH VILLAGE  
 Series F 11A(15) 05.5  
 Sheet 21B of

PLAN	DATE	BY
APPROVED	8-27	W. J. [Signature]
ALIGNED CHECKED		
NOTE BOOK		
NO.		

PROFILE	DATE	BY
APPROVED	8-27	W. J. [Signature]
ALIGNED CHECKED		
NOTE BOOK		
NO.		

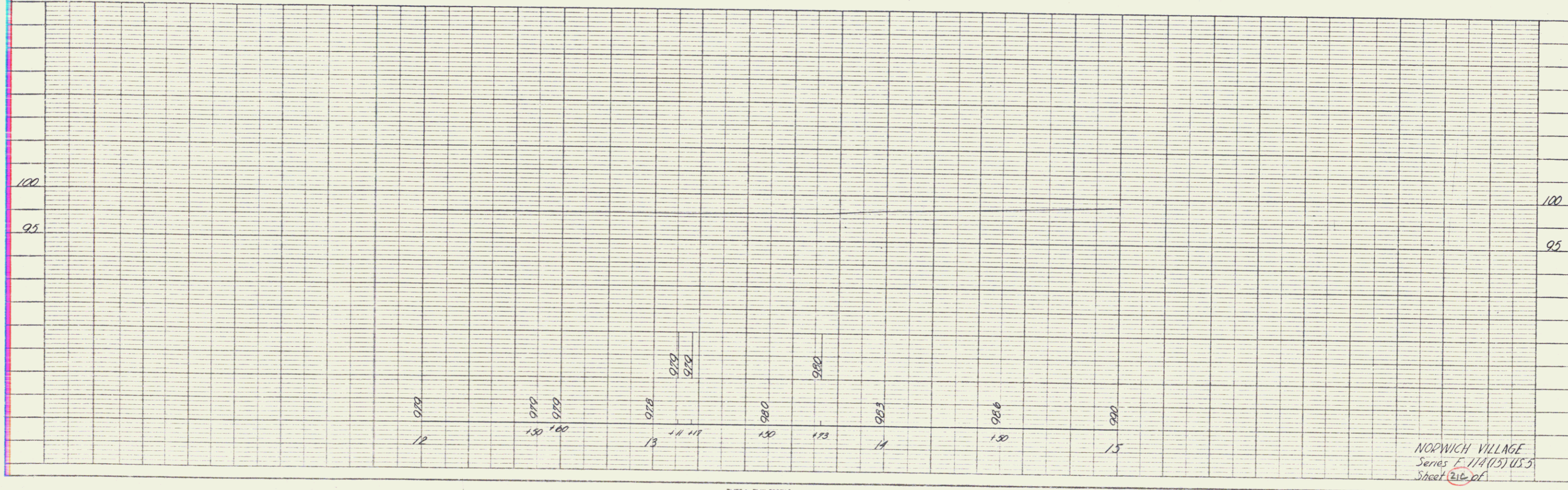
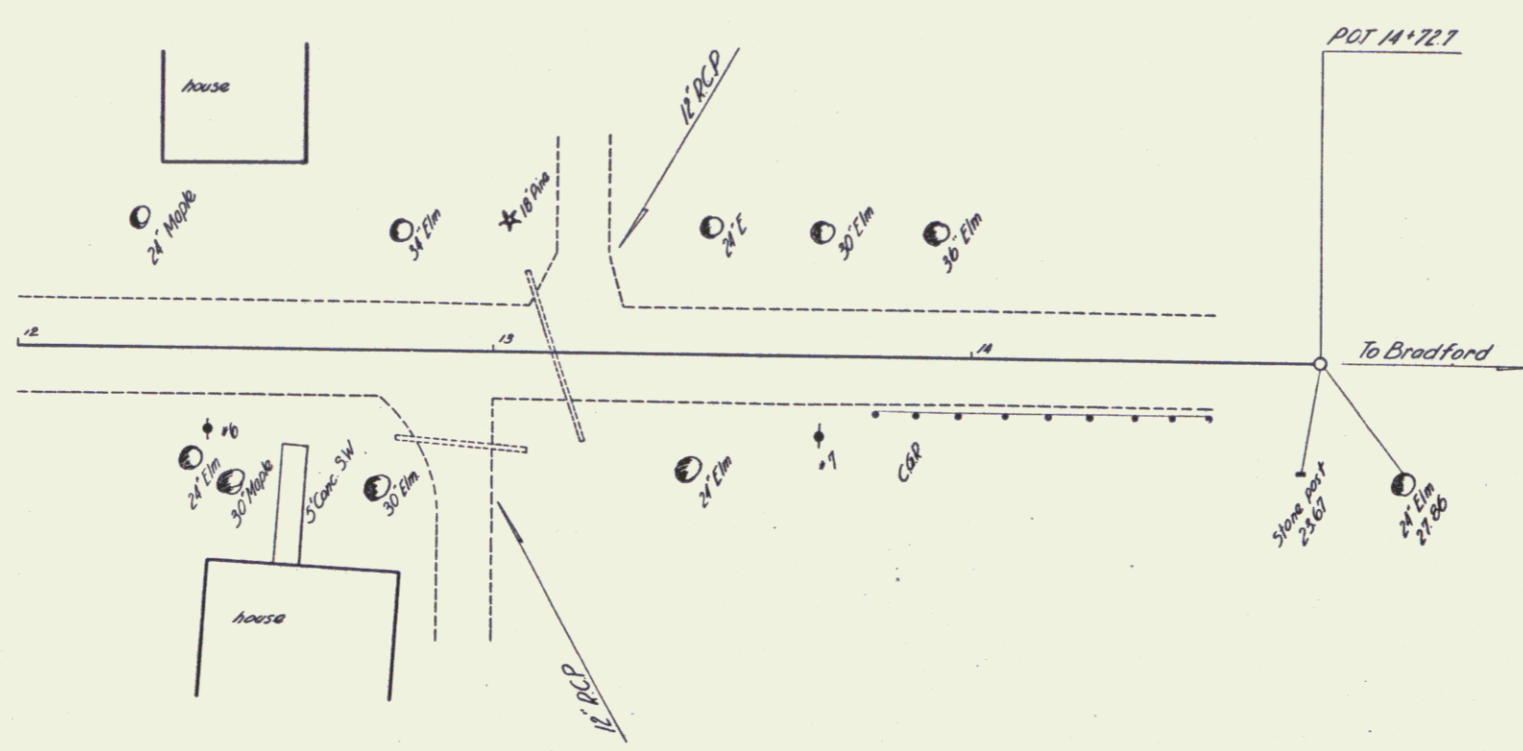
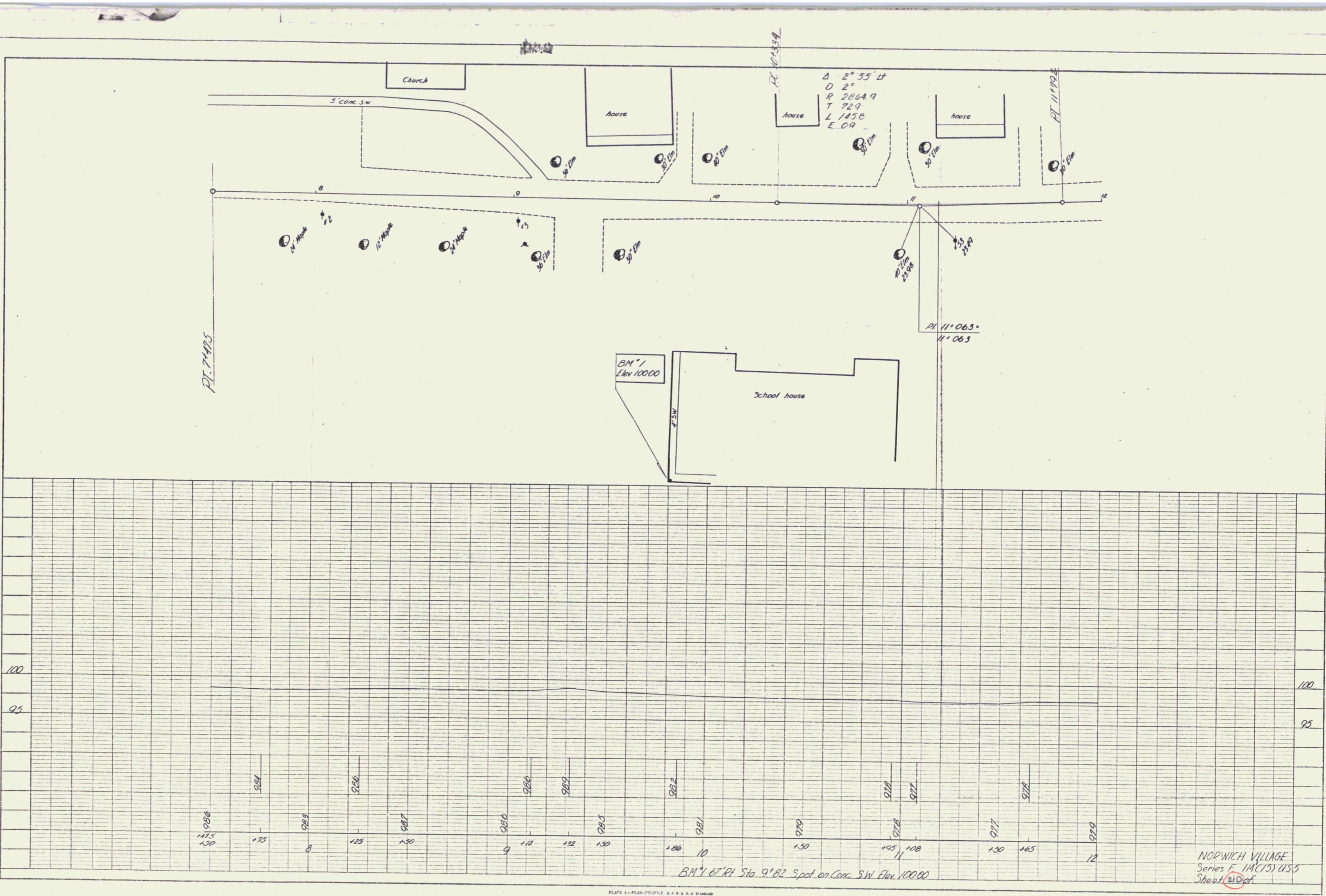


PLATE 1 - PLAN-PROFILE OF A R. & E. STANDARD  
 SCALE: 1" = 40' H. & V.  
 C.S.E. CO. NO. 240-12

NORWICH VILLAGE  
 Series E-1/A(15) US'S  
 Sheet 216 of 217

PLAN  
 DRAWN BY: [Signature]  
 CHECKED BY: [Signature]  
 DATE: 8-31  
 PROJECT: [Signature]

PROFILE  
 DRAWN BY: [Signature]  
 CHECKED BY: [Signature]  
 DATE: 8-31  
 PROJECT: [Signature]



Δ 2° 55' 41"  
 D 2°  
 R 2864.9  
 T 72.9  
 L 145.8  
 E 0.9

B.M. 1  
 Elev 100.00

PI 11° 06.5"  
 11° 06.5

PT. 74485

B.M. 1 OF RT Sta 9+82 Spot on Conc SW Elev 100.00

NORWICH VILLAGE  
 Series F 11A(15) US5  
 Sheet 21 of 27

PLATE 1-PLAN-PROFILE OF R.A.E. STANBRO  
 REPUTED & TRUSTED CO. NEW YORK  
 N.E. Co. No. 248-10  
 1902