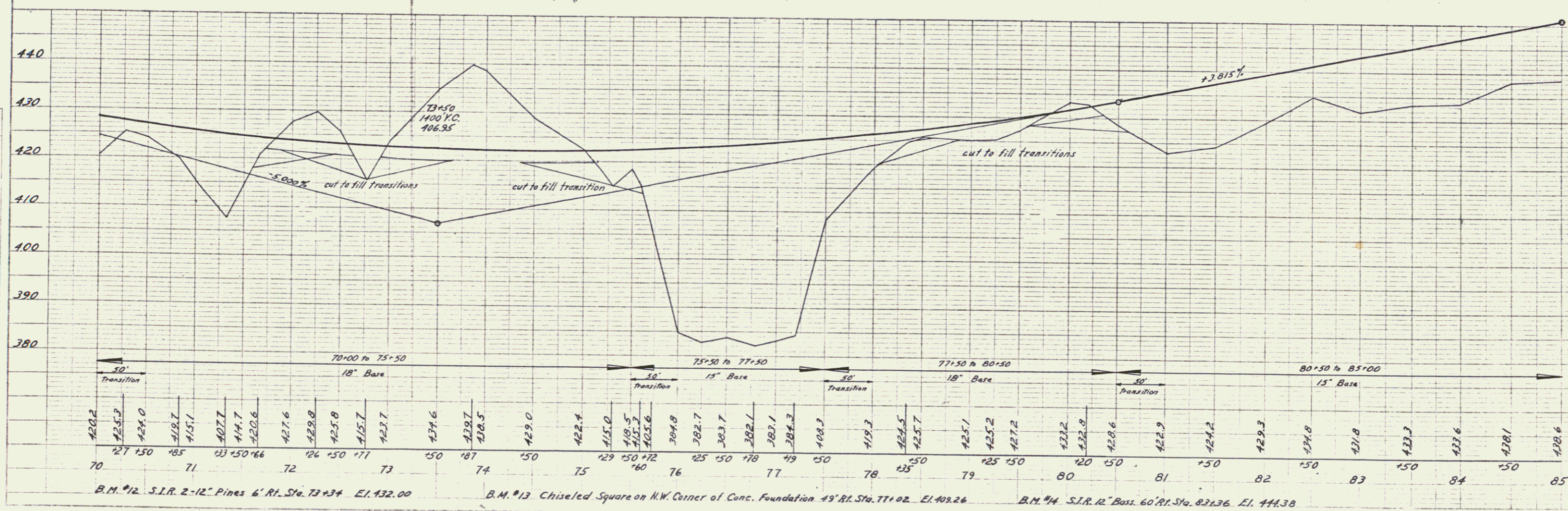
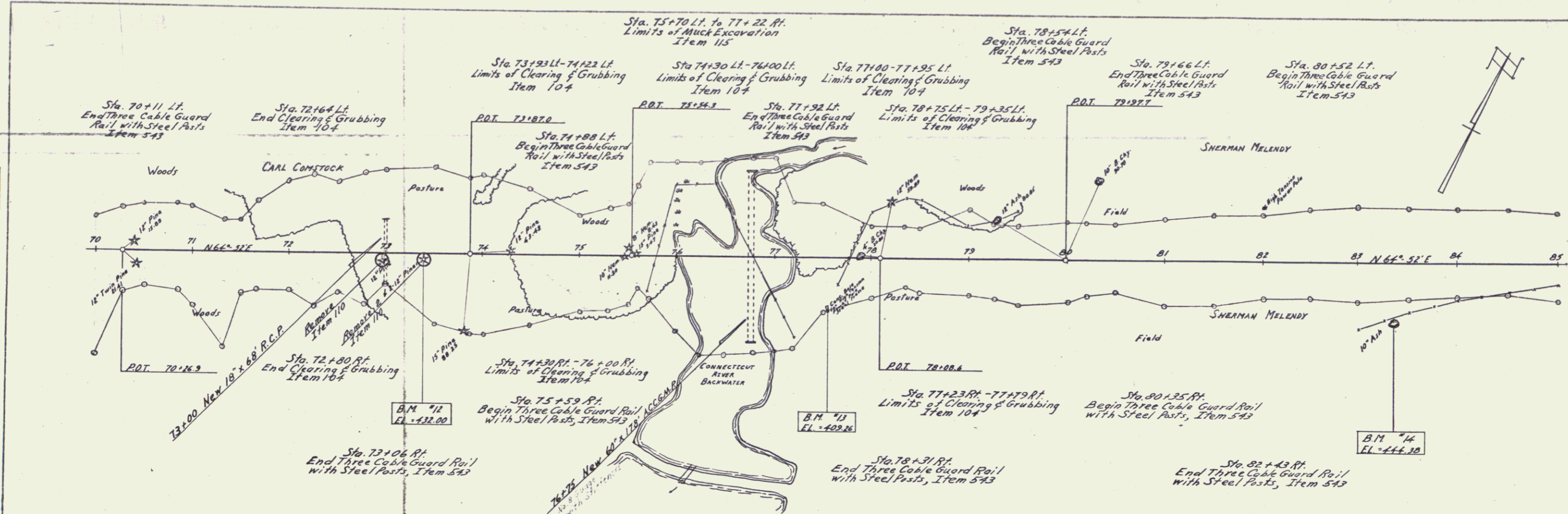


PLAN  
 DRAWN BY  
 W. H. DEWITT  
 DATE  
 9/13/1912

PROFILE  
 DRAWN BY  
 W. H. DEWITT  
 DATE  
 10/25/1912



B.M. #12 S.I.R. 2-12" Pines 6' Rt. Sta. 73+34 Elev. 432.00  
 B.M. #13 Chiseled Square on N.W. Corner of Conc. Foundation 49' Rt. Sta. 77+02 Elev. 409.26  
 B.M. #14 S.I.R. 12" Bass 60' Rt. Sta. 82+36 Elev. 444.38