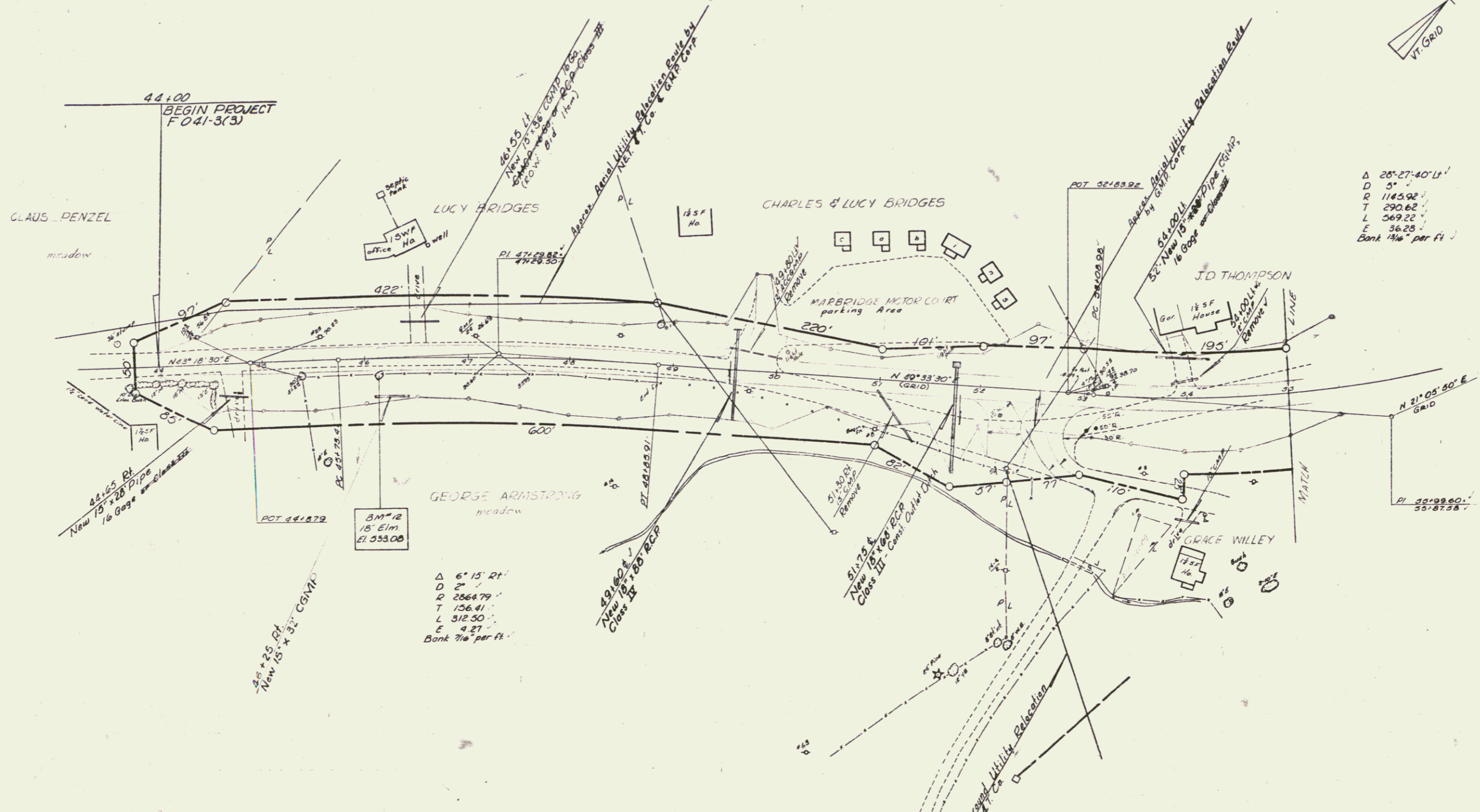
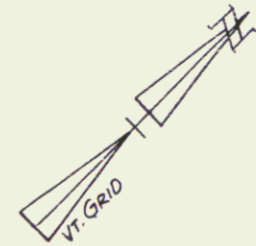


Construct Drive
 44+65 Rt.
 49+86 Lt.
 52+25 Rt.
 54+00 Lt.
 46+55 Lt. (E.O.W. Bid Item)

Three Cable Guard Rail
 w/Steel Posts Item 542
 45+53 - 51+86 Rt.
 52+54 - 55+00 Rt.
 57 - 53+50 Lt.

Excav & Removal of Road
 Surfaces and/or Pavements
 51+15 - 53+00 Rt.

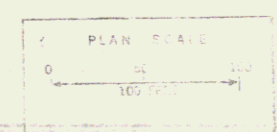


Δ 28°27'40" Lt.
 D 5'
 R 1145.92'
 T 290.62'
 L 369.22'
 E 36.28'
 Bank 1/4" per ft.

Δ 6°15' Rt.
 D 2'
 R 2564.79'
 T 156.41'
 L 312.50'
 E 4.21'
 Bank 7/8" per ft.

NORWICH

SURVEYED BY Palmer DATE 1/64
 DRAWN BY Boyd DATE 1/64
 TRACED BY Boyd DATE 1/64
 PROJ. NO. 041-3(3)
 SHEET 190 OF 200



4