

INDEX OF SHEETS

SHEET NO.	TITLE PAGE
2	TYPICAL CROSS-SECTION OF IMPROVEMENT
3	PLAN AND PROFILE STA. 11+50 TO STA. 16+00
4	16+00 - 31+00
5	31+00 - 45+00
6	45+00 - 60+00
7	60+00 - 75+00
8	75+00 - 90+00
9	90+00 - 105+00
10	105+00 - 118+44.4
11-19	CROSS SECTIONS

FED. ROAD DIST. NO.	STATE	FISCAL YEAR	FISCAL QUARTER	TOTAL SHEETS
3	VT.	19	1	15

STATE OF VERMONT
STATE HIGHWAY DEPARTMENT

PLAN AND PROFILE OF PROPOSED
STATE HIGHWAY
FEDERAL AID PROJECT

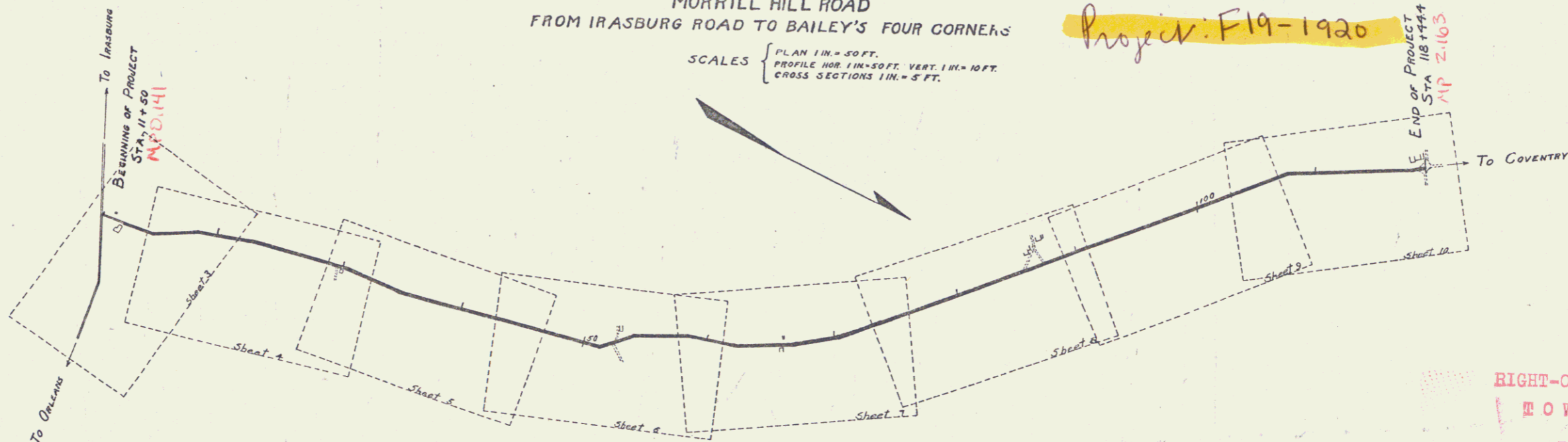
Pin # 99K306

Route: US5

Project: F19-1920

TOWN OF IRASBURG
MORRILL HILL ROAD
FROM IRASBURG ROAD TO BAILEY'S FOUR CORNERS

SCALES { PLAN 1" = 50 FT.
PROFILE HOR. 1" = 50 FT. VERT. 1" = 10 FT.
CROSS SECTIONS 1" = 5 FT.



LAYOUT
SCALE 500 FT. = 1 IN.

CONVENTIONAL SIGNS

COUNTY LINE	---	GROUND ELEVATION	—ELEV—
TOWN LINE	----	GRADE ELEVATION	—GRADE—
FENCE LINE	-----		
STONE WALL	-----		
UNFENCED PROPERTY	-----		
GUARD RAIL	-----		
TRAVELED WAY	-----		
RAILROAD	-----		
RETAINING WALL	-----		
BASE OR SURVEY LINE	-----		
CULVERT	-----		
DROP INLET	-----		
TROLLEY POLE	-----		
POWER POLE	-----		
TELEPHONE POLE	-----		
TREES	-----		
HEDGE	-----		
		CURVE DATA	
		DEFLECTION ANGLE	Δ
		DEGREE OF CURVE	D.
		RADIUS OF CURVE	R.
		TANGENT DISTANCE	T.
		LENGTH OF CURVE	L.
		EXTERNAL DISTANCE	E.
		POINT OF INTERSECTION	P. I.
		POINT OF CURVE	P. C.
		POINT OF TANGENT	P. T.

RIGHT-OF-WAY DIVISION
TOWN FILE
PERPETUAL
Town of US5
(To Be Returned to Division)

APPROVED: _____
STATE ENGINEER

APPROVED: _____
GOVERNOR

SUBMITTED: _____
STATE HIGHWAY COMMISSIONER

RECOMMENDED: _____
DISTRICT ENGINEER

RECOMMENDED FOR APPROVAL: _____
SUPERVISOR OF PUBLIC ROADS

RECOMMENDED FOR APPROVAL: _____
CHIEF ENGINEER-CORP. OF PUBLIC BLAHS

APPROVED: _____
DIRECTOR - BUREAU OF PUBLIC BLAHS

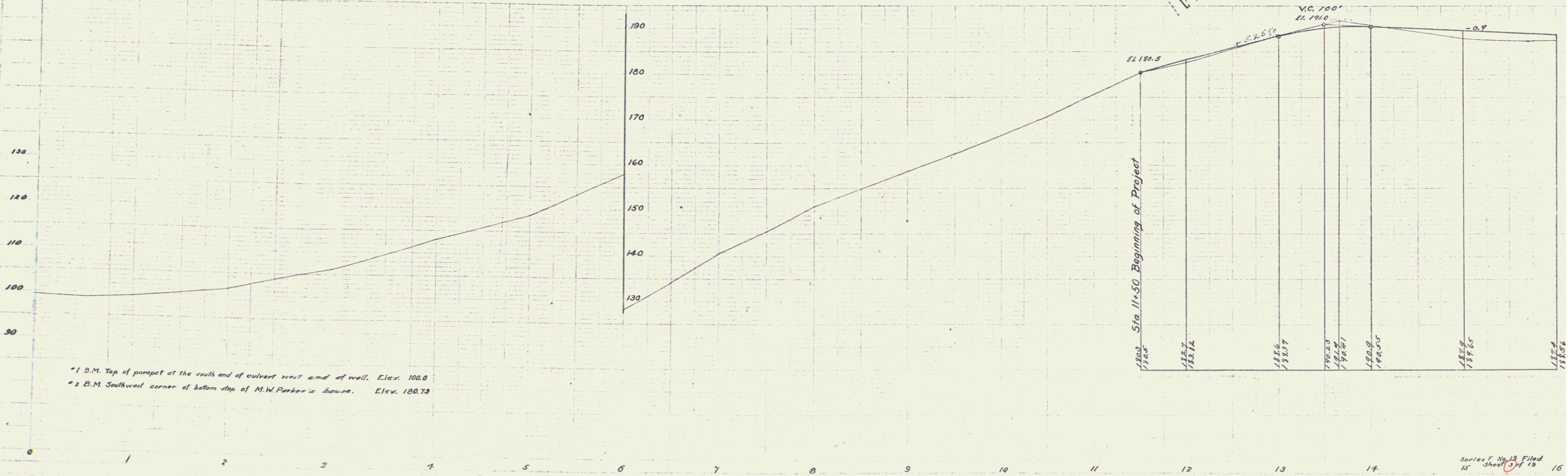
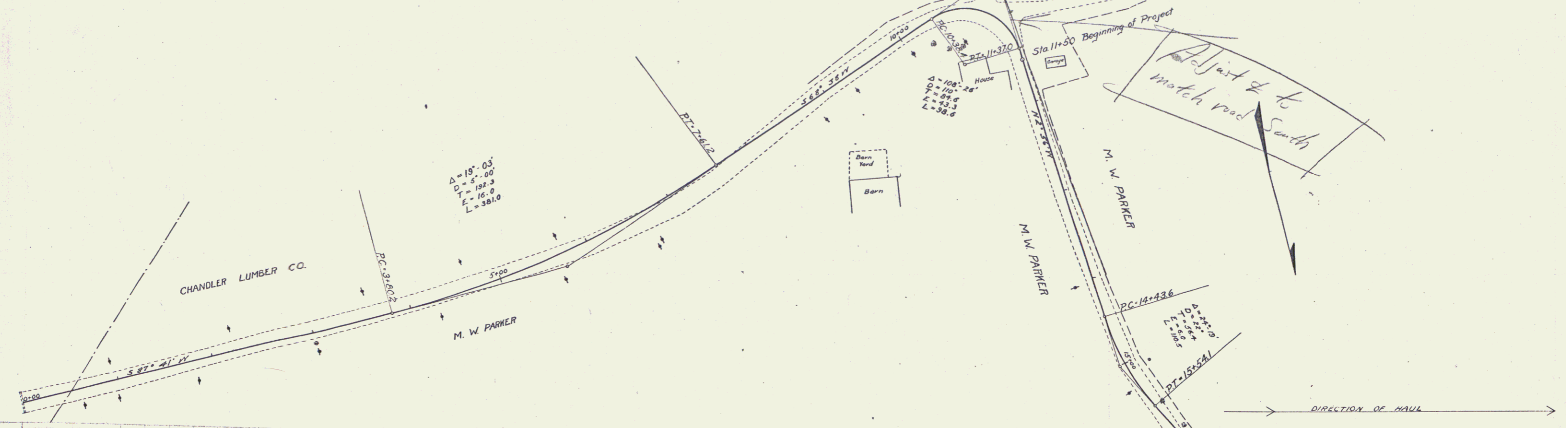
21/01/20

Series F No. 13 Filed
Sheet 13 of 15

DIST. # 9 PLANS

GUARD RAIL REQUIRED ON RIGHT Sta. 14+48 to 16+00 Length 152ft
 STONE BASE REQUIRED Sta. 11+30 to Sta. 14+50 Length 300ft

FED. ROAD DIST. NO.	STATE	FED. AID PROJ. NO.	FISCAL YEAR	SHEET NO.	TOTAL SHEETS
3	VT.	19	1940	3	19



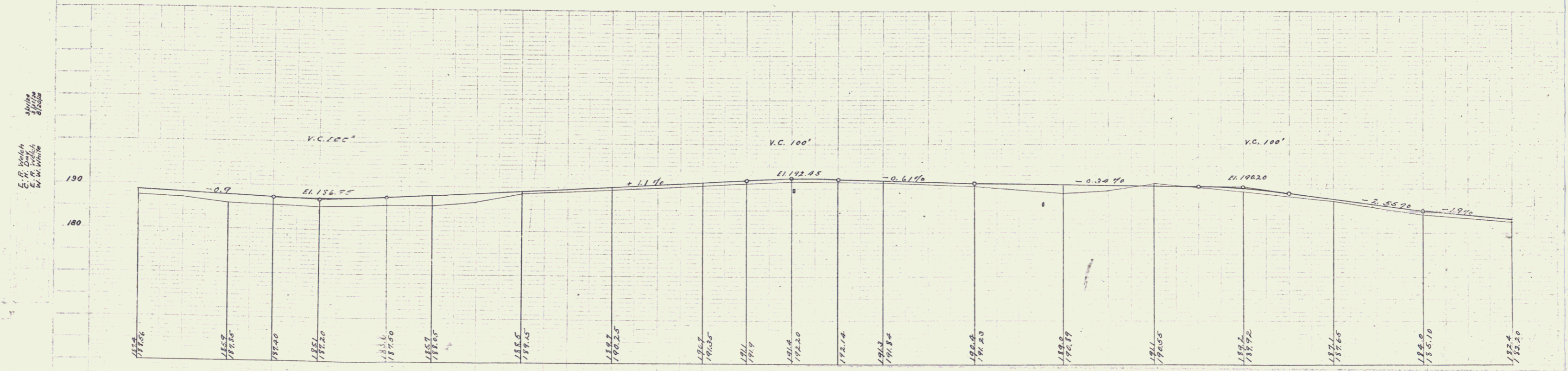
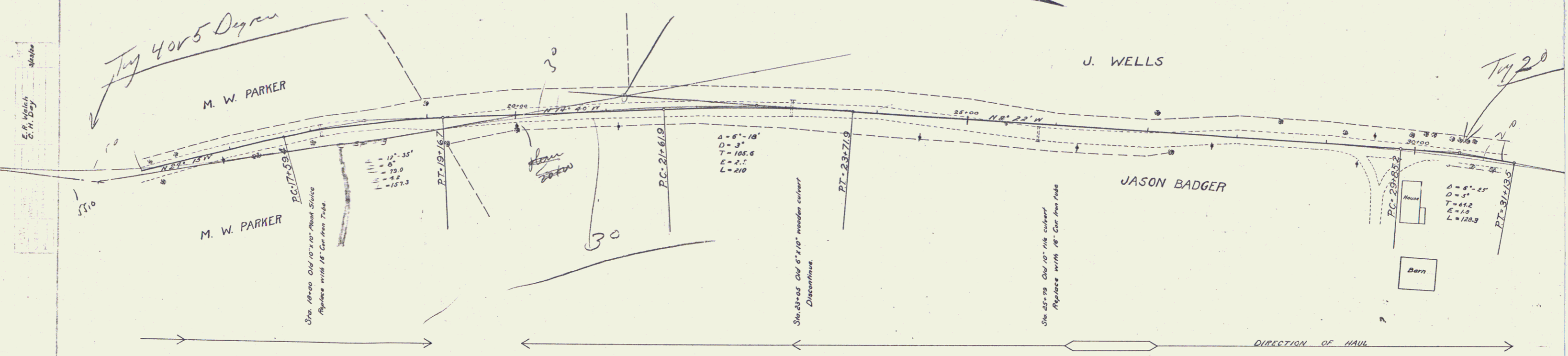
*1 B.M. Top of parapet at the south end of culvert west end of well. Elev. 100.0
 *2 B.M. Southwest corner of bottom step of M.W. Parker's house. Elev. 180.73

GUARD RAIL REQUIRED ON LEFT
 Sta. 17+88 to Sta. 18+12 Length 24 ft
 - 25+67 - 25+91 - 24 -
ON RIGHT
 Sta. 16+00 to Sta. 18+72 Length 272 ft
 - 19+20 - 26+00 - 680 -
TOTAL THIS SHEET 1000 ft.

STANDARD UNDERDRAIN REQUIRED
 Sta. 18+00 to Sta. 31+00 Length 1300 ft

NEW CULVERTS REQUIRED
 Sta. 18+00 16" Cor Iron Pipe 36 ft
 1-2-4 Concrete Head Walls 1.5 cu yds
 Sta. 25+79 16" Cor Iron Pipe 26 ft
 1-2-4 Concrete Headwalls 1.5 cu yds

PER ROAD DIST. MI.	STATE	PER AD. PER MI.	PIECE	SHEET	TOTAL
3	VT.	13	1820	4	18



*3 B.M. Top of rock east of Sta. 21+85. Elev. 183.55
 ** B.M. Top of foundation southwest corner Jason Badger's house. Elev. 184.89

GUARD RAIL REQUIRED ON LEFT

Sta. 32+60 to Sta. 32+84 Length 24 ft.
 - 36+51 - 36+75 - 24 -
 - 40+05 - 40+29 - 24 -
 - 44+46 - 44+70 - 24 -

ON RIGHT

Sta. 32+50 to Sta. 33+46 Length 96 ft.
 - 35+60 - 37+60 - 200 -
 - 39+60 - 41+64 - 224 -
 - 44+44 - 45+00 - 56 -

TOTAL THIS SHEET 672 ft.

NEW CULVERTS REQUIRED

Sta. 32+72 2' x 2' Concrete culvert 28 ft.
 1-2-# Concrete 5.3 cu yds.
 1-3-# Concrete 7.1 cu yds.
 Sta. 36+82 2' x 2' Concrete culvert 28 ft.
 1-2-# Concrete 5.7 cu yds.
 1-3-# Concrete 7.5 -
 Sta. 40+17 15" Cast Iron Pipe 28 ft.
 1-2-# Concrete Handwalls 1.5 cu yds.
 Sta. 44+58 2' x 2' Concrete culvert 28 ft.
 1-2-# Concrete 5.3 cu yds.
 1-3-# Concrete 7.1 cu yds.

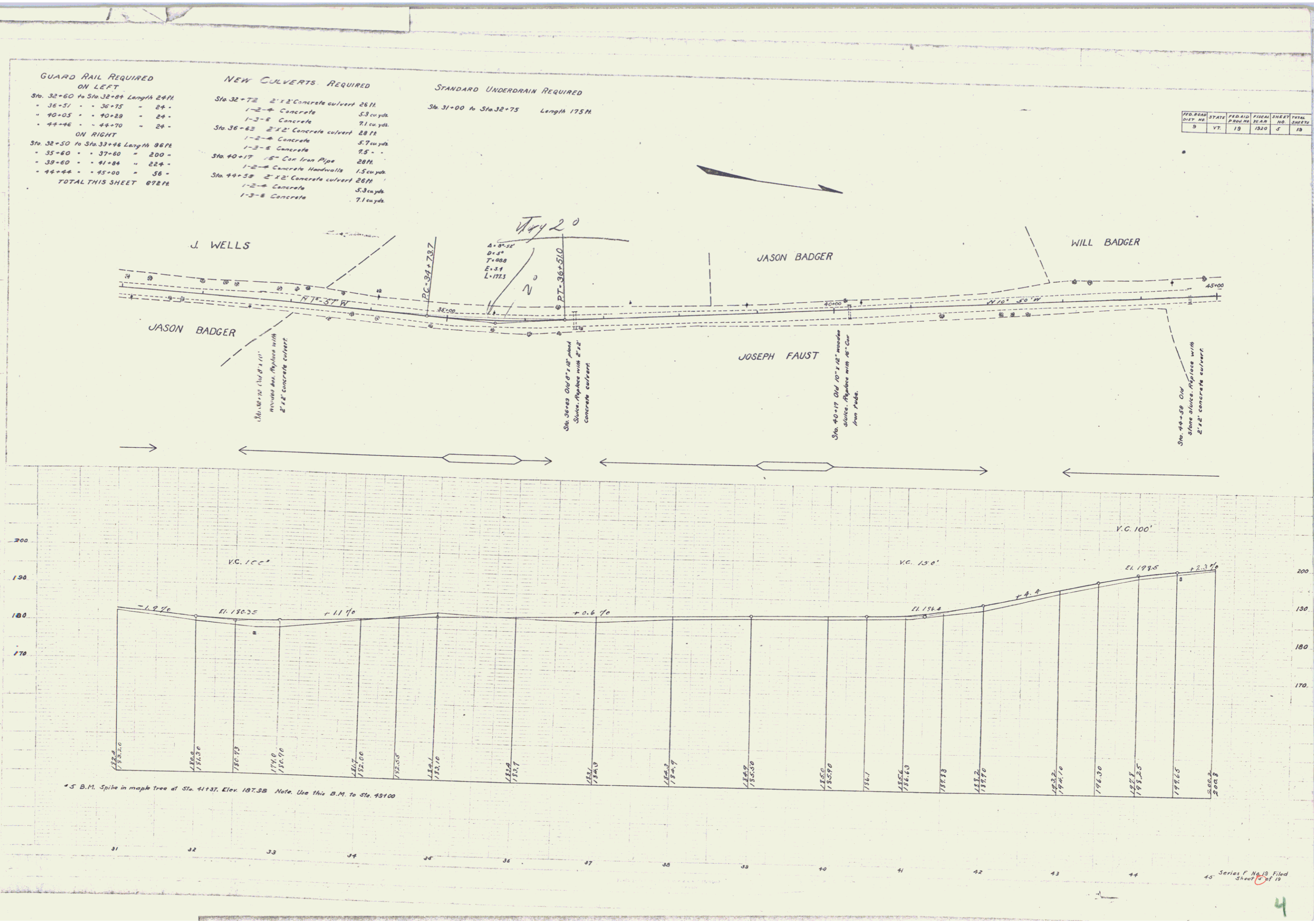
STANDARD UNDERDRAIN REQUIRED

Sta. 31+00 to Sta. 32+75 Length 175 ft.

FED. ROAD DIST. NO.	STATE	FED. AID PROJ. NO.	FISCAL YEAR	SHEET NO.	TOTAL SHEETS
9	VT.	19	1920	5	19

E. P. Welch
S. H. White
J. W. White

E. P. Welch
S. H. White
J. W. White



GUARD RAIL REQUIRED ON LEFT

Sta. 50+00 to Sta. 51+12 Length 2+12
 - 51+56 - - 51+80 - 24 -
 - 53+60 - - 53+93 - 24 -
 - 57+89 - - 58+13 - 24 -

ON RIGHT

Sta. 45+00 to Sta. 48+44 Length 3+44
 - 49+34 - - 52+30 - 256 -
 - 53+68 - - 53+93 - 24 -
 - 55+20 - - 55+84 - 64 -
 - 57+50 - - 58+82 - 232 -

TOTAL THIS SHEET 816 FT

NEW CULVERTS REQUIRED

Sta. 51+00 2' Cor Iron Pipe 32 ft
 12" Concrete Roadways 10 each
 Sta. 53+21 Culvert now in place.
 Proposed Grap least Grate in 2'x3'6" Grates

FED. ROAD DIST. NO.	STATE	FED. AID PROJ. NO.	YEAR
0	VT.	19	1924

E. P. Wickham
 C. H. Day
 J. W. Vinton
 2000
 2000
 2000



Possible location although it looks rather radical. Might like to run and see if it is anything

* 6 B.M. Top of rock west of Sta. 50+00. Elev. 203.39
 * 7 B.M. Bottom of base board at southwest corner of Will Badger's house. Elev. 213.17
 * 8 B.M. Top of east end wall over center line of culvert at Sta. 58+01. Elev. 212.65

GUARD RAIL REQUIRED ON LEFT

Sta. 62-19 to Sta. 62+43 Length 24 ft
 " 66-13 " " 66+37 " 24 "
 " 70-59 " " 70+83 " 24 "
 " 74-49 " " 74+73 " 24 "

ON RIGHT

Sta. 60-60 to Sta. 64+76 Length 416 ft
 " 66-10 to " 68+50 " 240 "
 " 70+59 " " 70+83 " 24 "
 " 74+49 " " 74+73 " 24 "

TOTAL THIS SHEET 800 ft.

NEW CULVERTS REQUIRED

Sta. 62-22 2'x2' Concrete Culvert 29'3"
 1-2-4 Concrete 5.9 cu yds
 1-5-6 " 7.7 "

Sta. 66-22 2'x2' Concrete Culvert 28'6"
 1-2-4 Concrete 5.7 cu yds
 1-3-5 " 7.6 "

Sta. 70-62 3'x3' Reinforced Concrete 28'6"
 1-2-4 Concrete 6.0 cu yds
 1-3-5 " 10.3 "

Spew 130 lbs

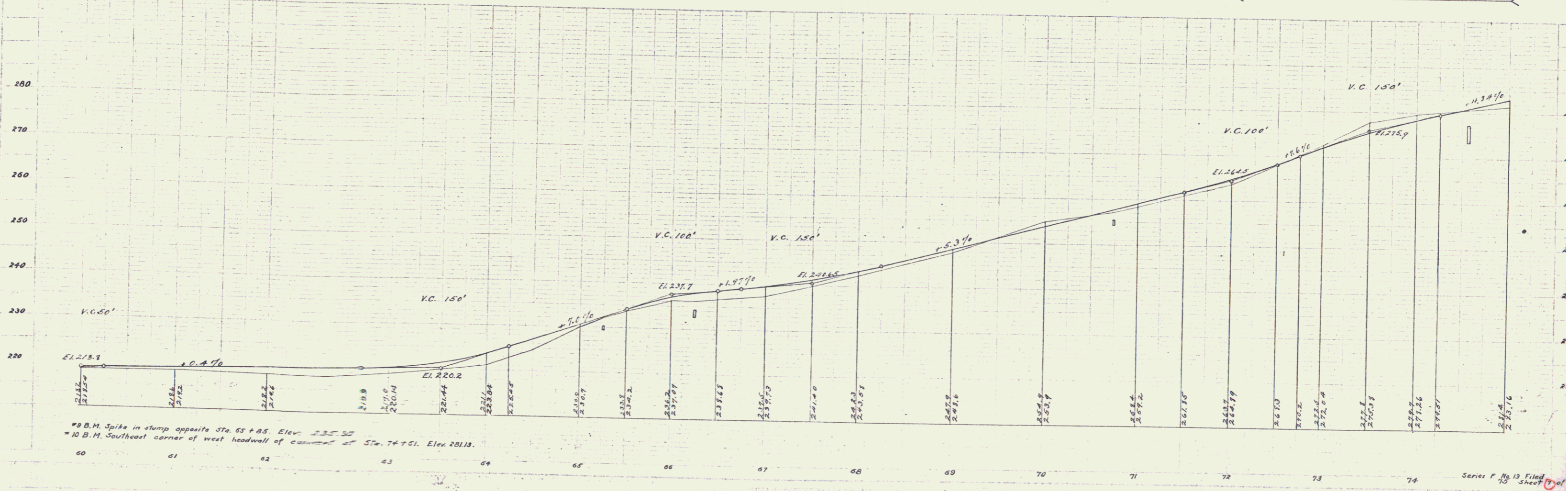
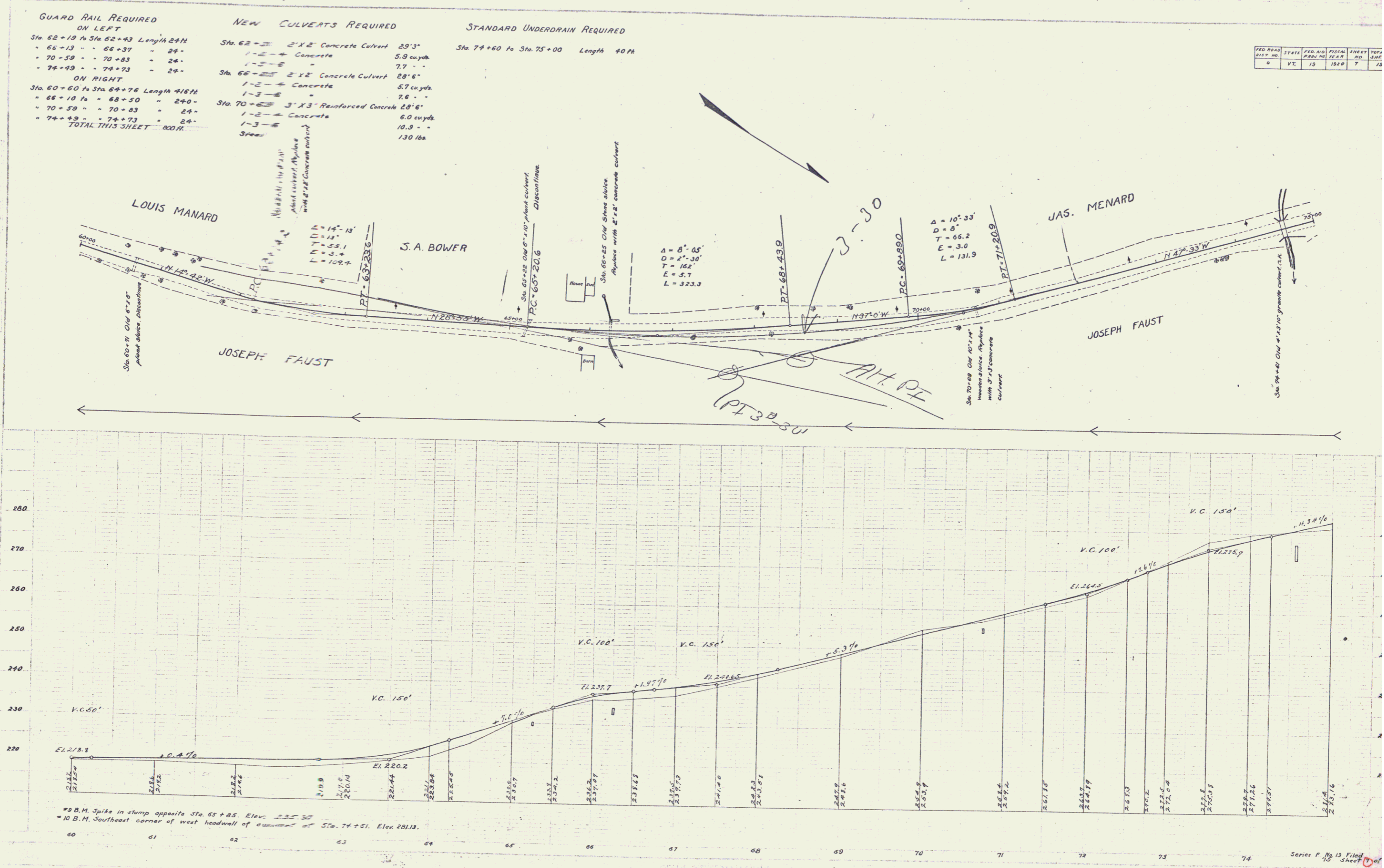
STANDARD UNDERDRAIN REQUIRED

Sta. 74+60 to Sta. 75+00 Length 40 ft

FED. ROAD DIST. NO.	STATE	FED. AID PROJ. NO.	FISCAL YEAR	SHEET NO.	TOTAL SHEETS
6	VT.	13	1926	7	13

E. F. Welch
E. H. Day
Surveyors

E. F. Welch
E. H. Day
Surveyors



6

GUARD RAIL REQUIRED ON LEFT

Sta. 77+18 to Sta. 77+92 Length 24ft
 - 82+31 - - 82+75 - 24 -
 - 85+32 - - 85+58 - 24 -
 - 88+30 - - 88+54 - 24 -

ON RIGHT

Sta. 77+18 to Sta. 77+92 Length 24ft
 - 82+31 - - 82+75 - 24 -
 - 85+32 - - 85+58 - 24 -
 - 88+30 - - 88+54 - 188 -

TOTAL THIS SHEET 336ft

STONE BASE REQUIRED

Sta. 82+63 to Sta. 90+00 Length 737ft

STANDARD UNDERDRAIN REQUIRED

Sta. 75+00 to Sta. 82+63 Length 763ft

NEW CULVERTS REQUIRED

Sta. 88+42 4'x4' Reinforced Concrete 28'9"
 1-2-4 Concrete 73 cu yds
 1-3-6 Concrete 14.5 -
 Steel 193 lbs

Sta. 77+30 2'x2' Concrete 23'6"
 1-2-4 Concrete 4.8 cu yds
 1-3-6 - 6.7 -

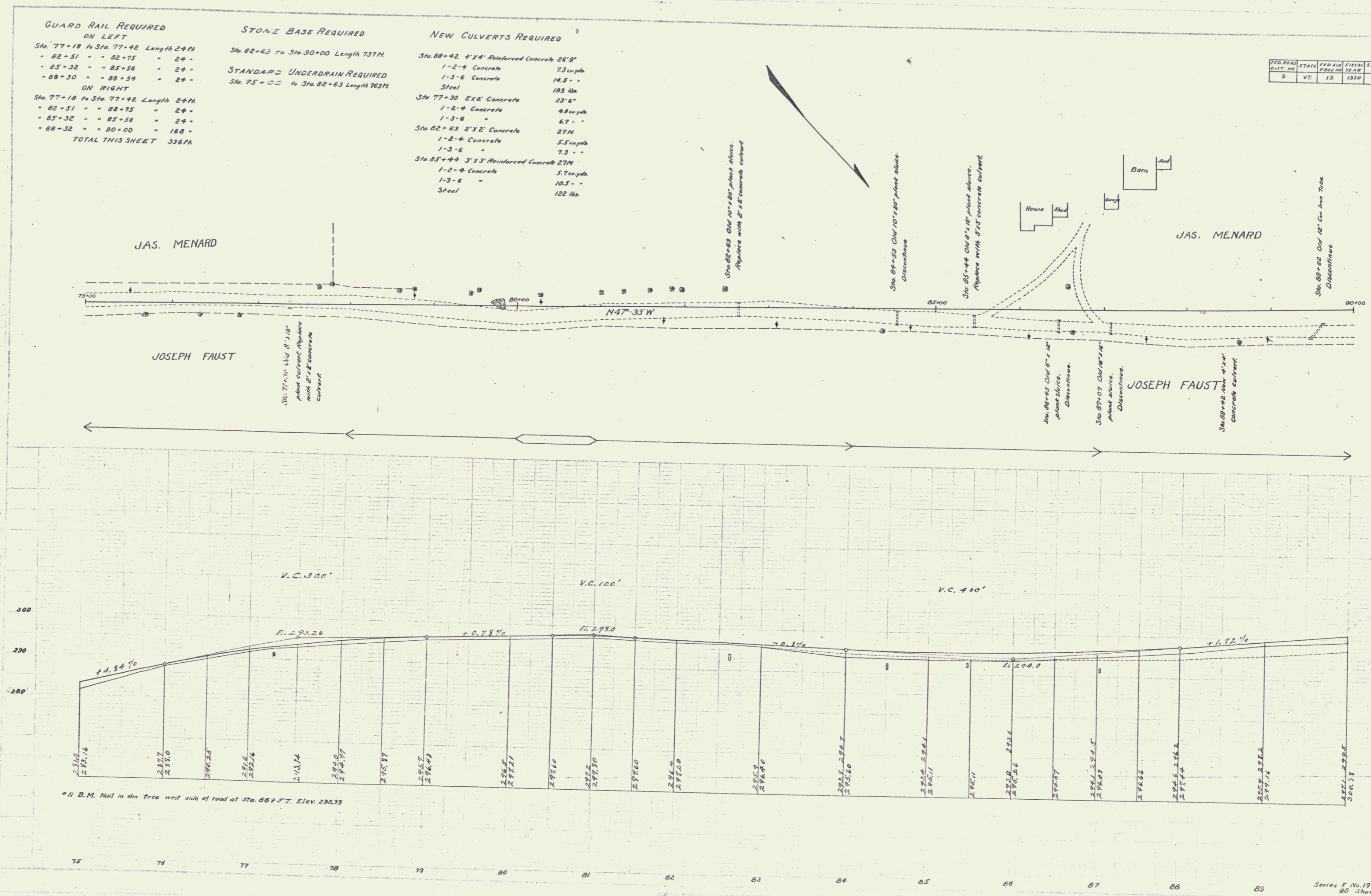
Sta. 82+63 2'x2' Concrete 27ft
 1-2-4 Concrete 5.5 cu yds
 1-3-6 - 7.3 -

Sta. 85+44 3'x3' Reinforced Concrete 27ft
 1-2-4 Concrete 5.7 cu yds
 1-3-6 - 10.5 -
 Steel 122 lbs

FED. ROAD DIST. NO.	STATE	FED. AID PROGRAM	FISCAL YEAR	SHEET NO.	TOTAL SHEETS
5	VT.	19	1940	8	18

E. H. Dyer

E. H. Dyer
E. W. White



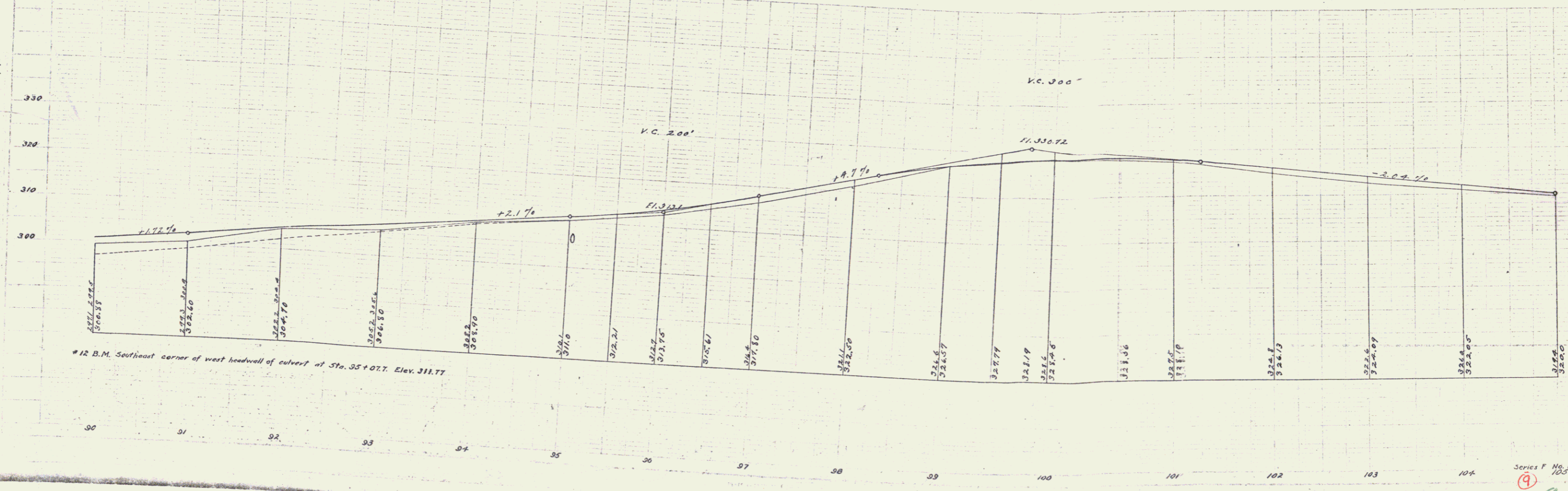
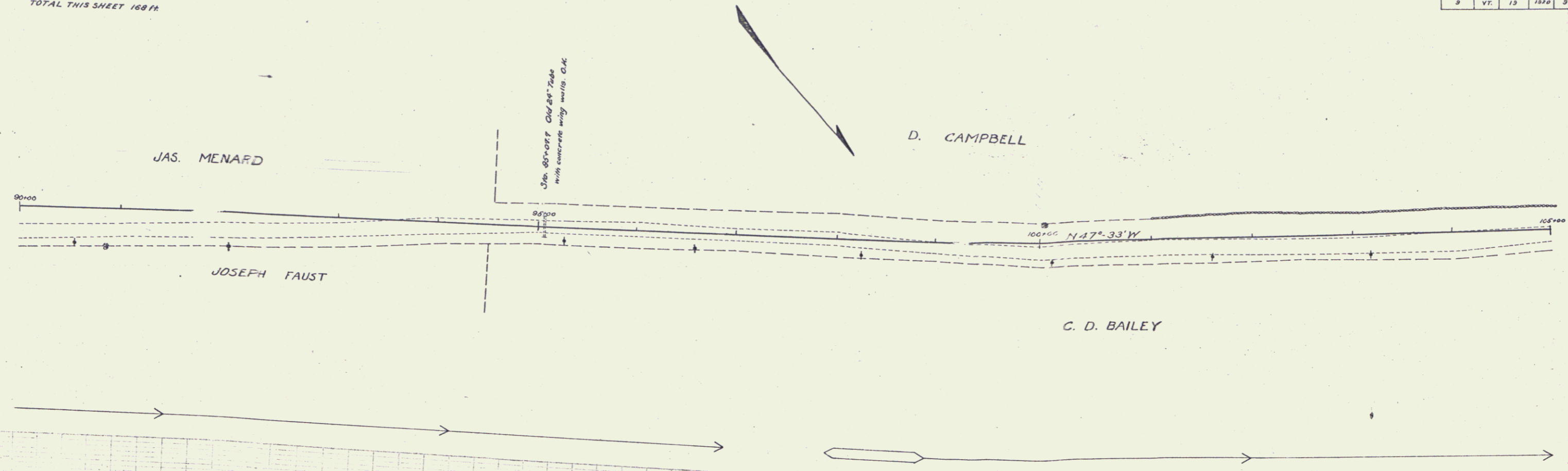
#1 B.M. Nail in elm tree west side of road at Sta. 86+57. Elev. 230.73

Series F No. 18 F. 1st 80 Sheet 8 of 18

7

GUARD RAIL REQUIRED
 ON LEFT
 Sta. 94+96 to Sta. 95+20 Length 24 ft.
 ON RIGHT
 Sta. 90+00 to Sta. 90+98 Length 98 ft.
 - 94+60 - 95+58 - 96 -
 TOTAL THIS SHEET 168 ft.

FED. ROAD DIST. NO.	STATE	FED. PROJ. NO.	FISCAL YEAR	SHEET NO.	TOTAL SHEETS
9	VT.	13	1920	5	19



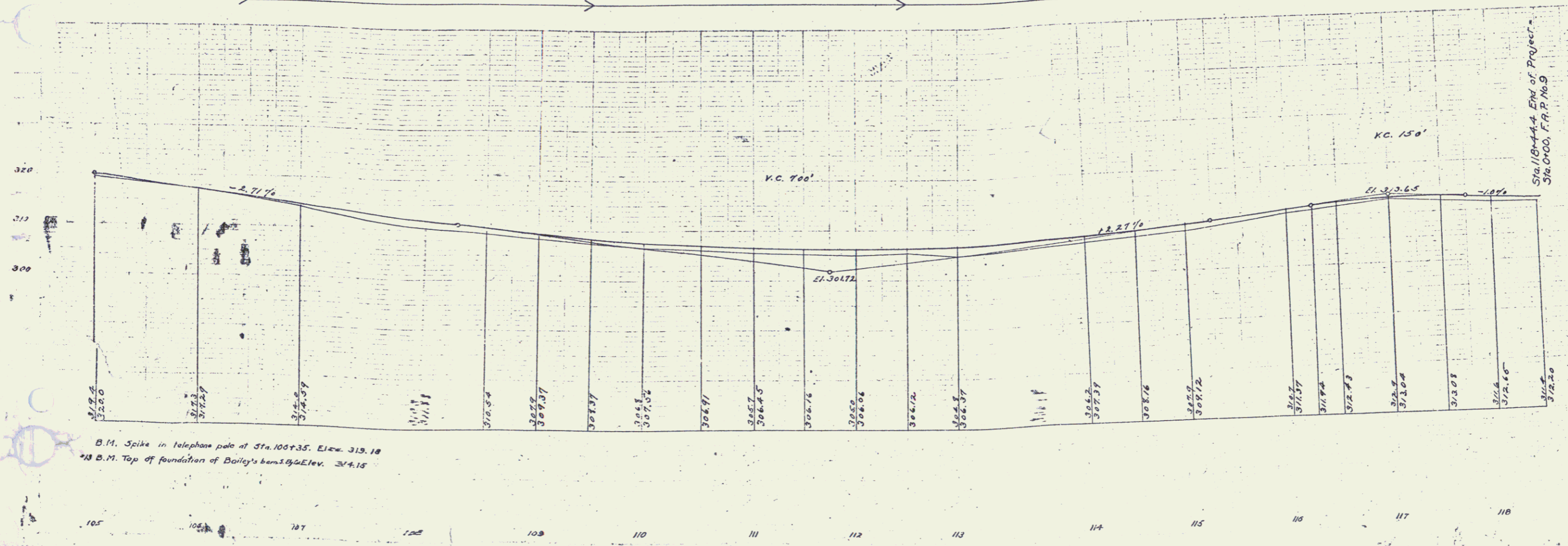
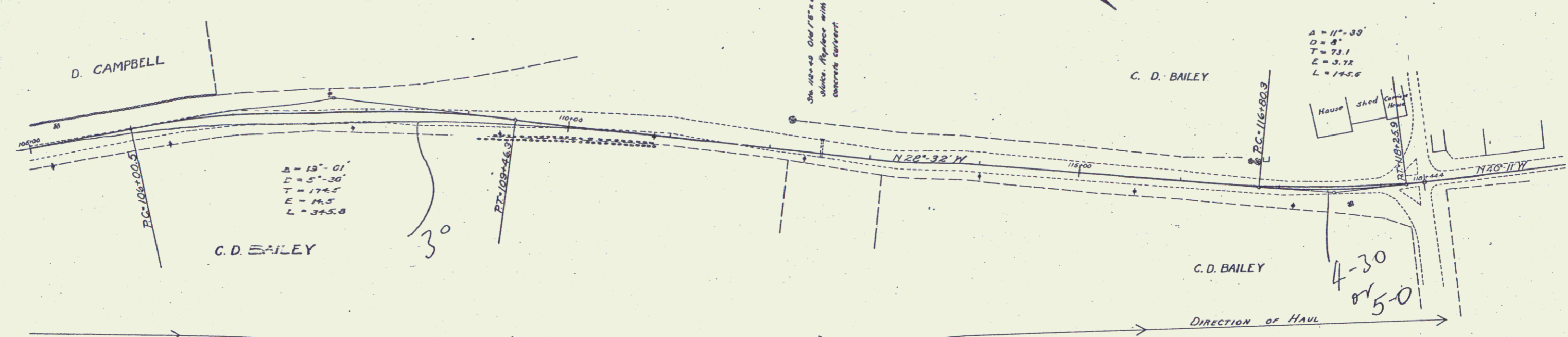
#12 B.M. Southeast corner of west headwall of culvert at Sta. 95+07.7. Elev. 311.77

ROAD RAIL REQUIRED ON LEFT
 112+37 to Sta. 112+61 Length 24 ft
ON RIGHT
 112+37 to Sta. 112+61 Length 24 ft
TOTAL THIS SHEET 48 ft

STONE BASE REQUIRED
 Sta. 107+00 to Sta. 115+00 Length 725 ft

NEW CULVERTS REQUIRED
 Sta. 112+49 3'-x3' Reinforced Concrete 273'
 1'-x4' Concrete Head Walls 57 cu yd
 1'-x3'-6 Concrete 10.8 -
 Steel 124 lbs.
 10' Culverts (if required by Engineer) 32 ft

FED. ROAD DIST. NO.	STATE	SECTION	PROJECT	SHEET NO.	TOTAL SHEETS
2	VT	13	1020	10	10



HIGHWAY
 DISTRICT
 19-9