

GUARD RAIL REQUIRED ON LEFT

Sta. 50+00 to Sta. 51+12 Length 2+12
 - 51+56 - - 51+80 - 24 -
 - 53+60 - - 53+93 - 24 -
 - 57+89 - - 58+13 - 24 -

ON RIGHT

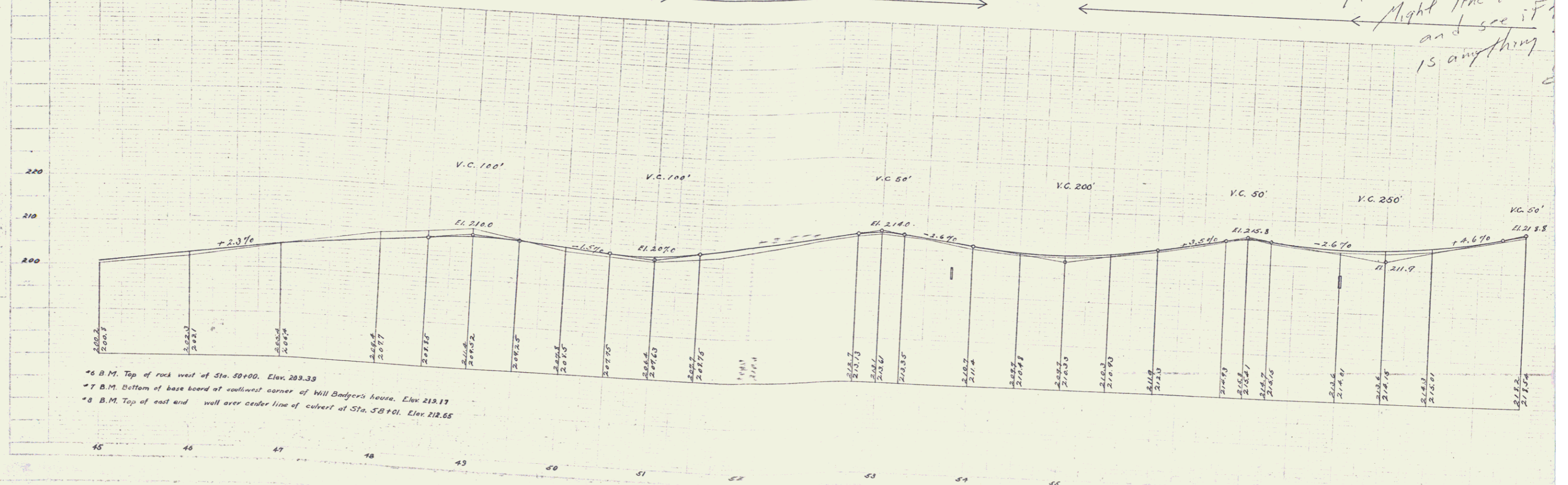
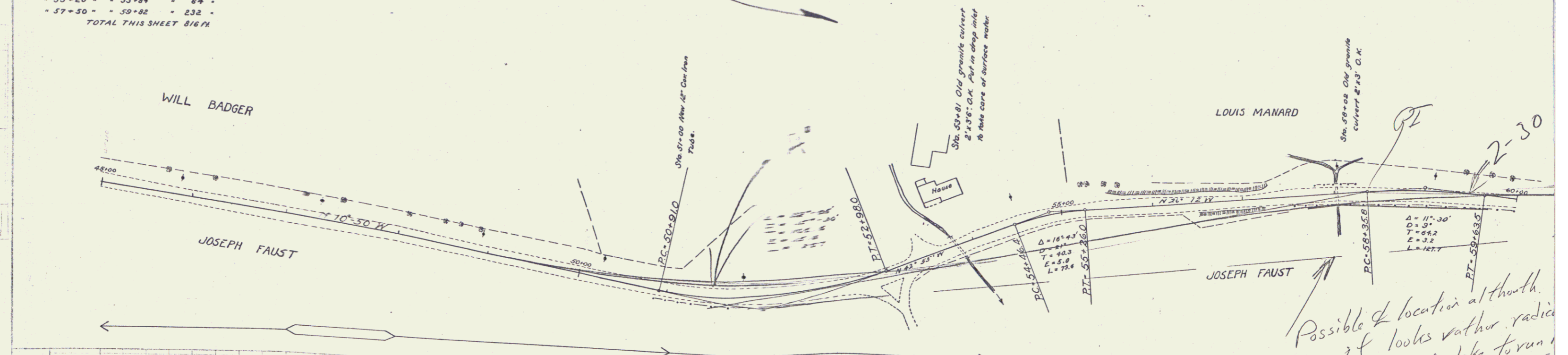
Sta. 45+00 to Sta. 48+44 Length 3+44
 - 49+34 - - 52+30 - 256 -
 - 53+68 - - 53+93 - 24 -
 - 55+20 - - 55+84 - 64 -
 - 57+50 - - 58+82 - 232 -

TOTAL THIS SHEET 816 FT

NEW CULVERTS REQUIRED

Sta. 51+00 2' Cor Iron Pipe 32 ft
 12" Concrete Roadways 10 each
 Sta. 53+21 Culvert now in place.
 Proposed Grap least Gate in 2'x3'6" Concrete

FED. ROAD DIST. NO.	STATE	FED. AID PROJ. NO.	YEAR
0	VT.	19	1924



E.P. Nichols
 C.E. Day
 W.L. Wilson
 1924