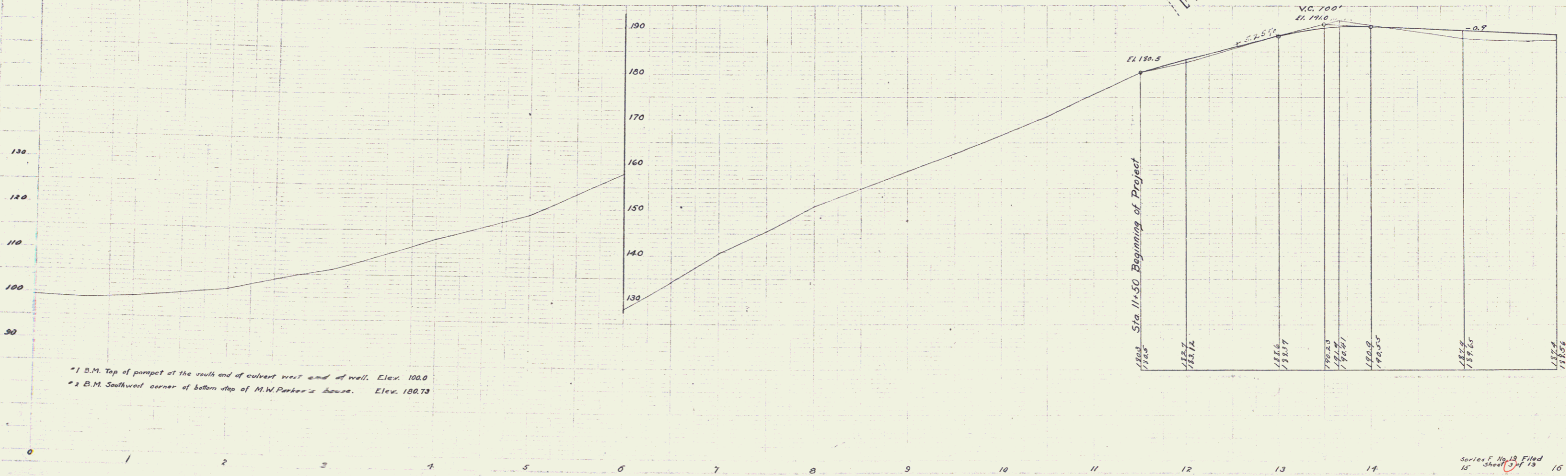
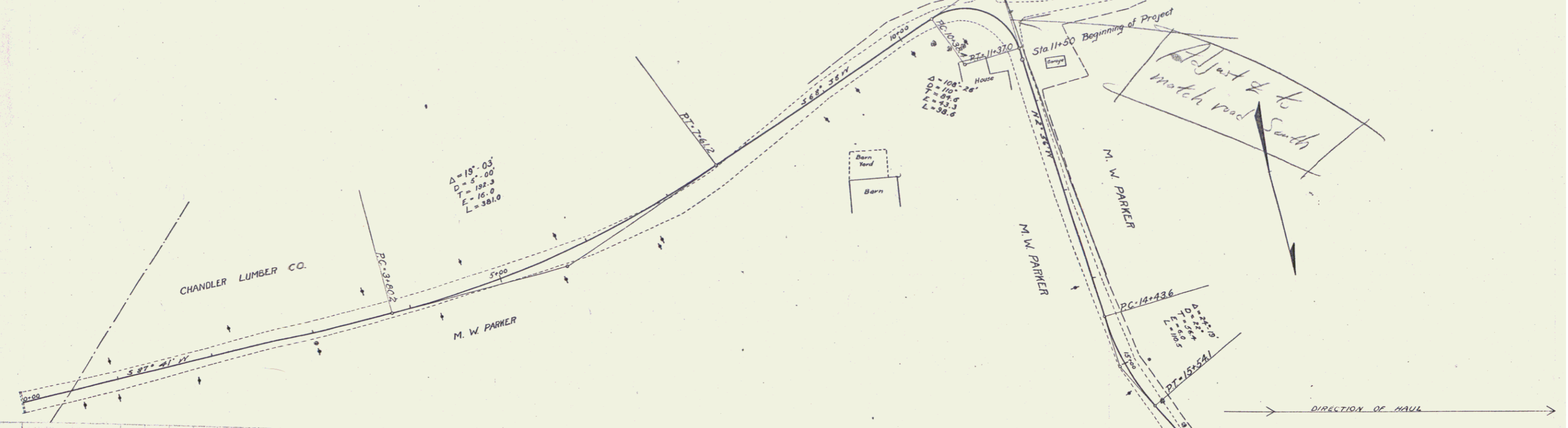


GUARD RAIL REQUIRED ON RIGHT Sta. 14+48 to 16+00 Length 152ft
 STONE BASE REQUIRED Sta. 11+30 to Sta. 14+50 Length 300ft

FED. ROAD DIST. NO.	STATE	FED. AID PROJ. NO.	FISCAL YEAR	SHEET NO.	TOTAL SHEETS
3	VT.	19	1940	3	19



*1 B.M. Top of parapet at the south end of culvert west end of well. Elev. 100.0
 *2 B.M. Southwest corner of bottom step of M.W. Parker's house. Elev. 180.73