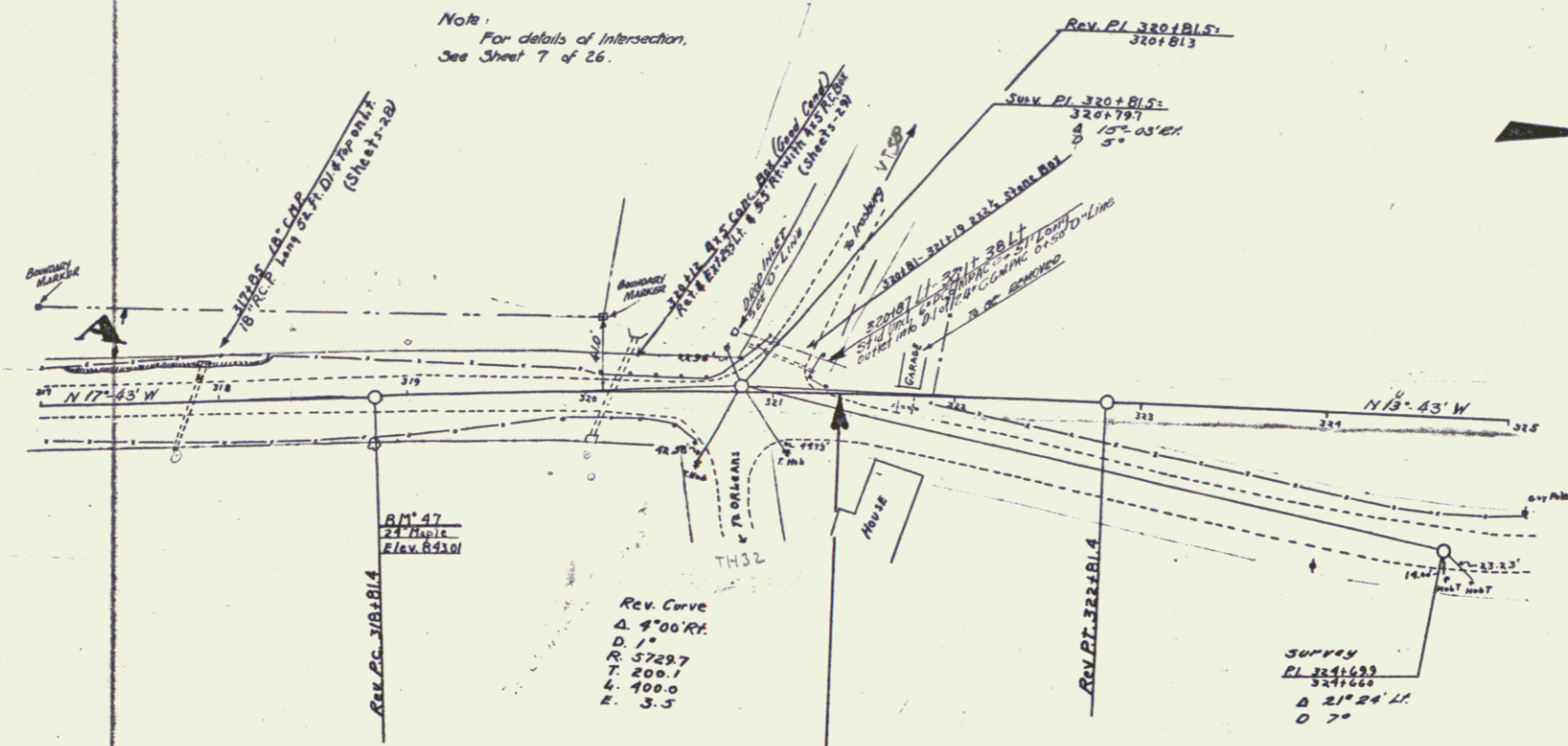


FED. ROAD DIST. NO.	STATE	FED. AID PROJ. NO.	FISCAL YEAR	SHEET NO.	TOTAL SHEETS
9	Vt	55-C	1937	6	26

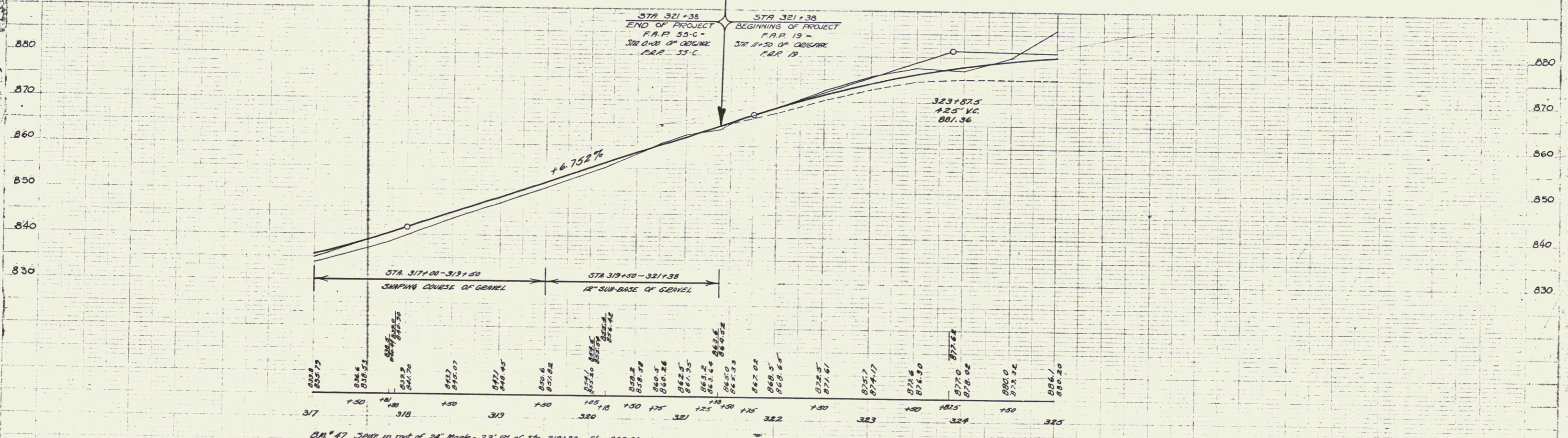
Note: For details of Intersection, See Sheet 7 of 26.

Note: The Contractor is to scarify the old road between Sta. 323+00 to 327+00, remove the bituminous material from this area, and use it as embankments. This work is to be paid for as Common Excavation and Embank, Item 10-11.



Rev. Curve  
 Δ 9°00'00"  
 D 17'  
 R 37227'  
 T 205.1'  
 L 109.0'  
 E 3-5

DRAWN	KIND OF INSTRUMENT	DATE OF INSTRUMENT	GRANTOR	GRANTEE	RECORDED	REMARKS
A-B-C	Q.C.D.	8-3-36	MARY M. CLARK	J. J. O'NEILL	19	219 55-36



BM # 47 Spike in root of 24' Maple - 23' E of Sta. 318+00 - Elev. 843.01

SERIES F.A.P. NO. 55-C  
 Sheet 6 of 26