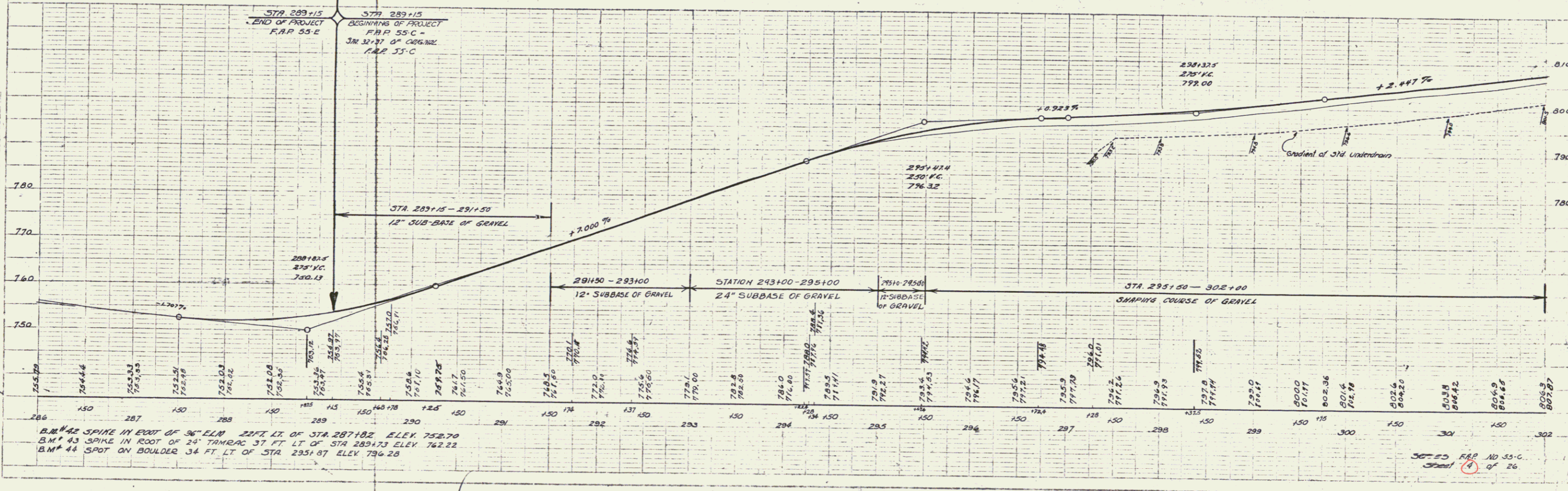


DATE OF INSTRUMENT	GRANTOR	GRANTEE	RECORDED	BOOK	PAGE	DATE
AS-C	B.C.A.	GEO. KING	8-1-36	37	43	8-5-36

Note: The existing Guard Rail on this project is to remain the property of the Sbb.



B.M. 42 SPIKE IN FOOT OF 36" ELM 22 FT. LT. OF STA 287+82 ELEV. 752.70
 B.M. 43 SPIKE IN FOOT OF 24" TAMARAC 37 FT. LT. OF STA 289+73 ELEV. 762.22
 B.M. 44 SPOT ON BOULDER 34 FT. LT. OF STA 295+87 ELEV. 794.28

PLAN
 SCALE 1" = 40'
 DATE 8-1-36

R 559
 30
 94.1