

INDEX OF SHEETS

SHEET NO. 1	TITLE PAGE
2	TYPICAL CROSS-SECTION OF IMPROVEMENT
3	PLAN AND PROFILE STA. 0+0-15+00
4	15+00-30+00
5	30+00-32+41.5
6, 7, 8, 9, 10, 11	BRIDGE STA. 9+28.49-10+54.13
12 TO 22	CROSS SECTIONS

SHEET No. 3A	PLAN AND PROFILE STA. 0+00-10+00
4A	10+00-22+00
5A	22+00-28+75
12A-20A	CROSS SECTIONS

FED. ROAD DIST. NO.	STATE	FED. AID FUNDING YEAR	PROJECT NO.	SHEET NO.	TOTAL SHEETS
9	Vt.	55 D	1926	7	22

STATE OF VERMONT
STATE HIGHWAY DEPARTMENT

PLAN AND PROFILE OF PROPOSED
STATE HIGHWAY
FEDERAL AID PROJECT

TOWN OF BARTON

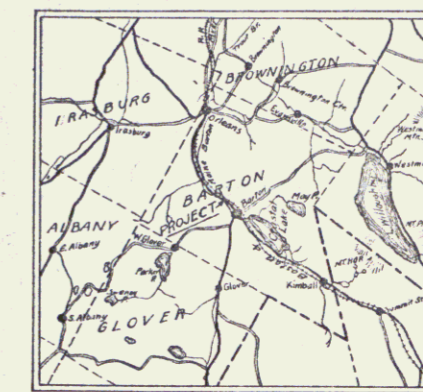
NEWPORT-BARTON ROAD

BEGINNING AT FARM BUILDINGS OF JERRY BUCKLEY
AND EXTENDING SOUTHERLY 0.61 MILES TO FAP 55 B

BARTON, VT.

Route: US 5
Project: F55D

Pin # 99R299



Plan 1 in = 50 ft.
Profile 1 in = 50 ft.
Vertical 1 in = 10 ft.
Cross Sections 1 in = 5 ft.



CONVENTIONAL SIGNS

- COUNTY LINE
- TOWN LINE
- FENCE LINE
- STONE WALL
- UNFENCED PROPERTY
- GUARD RAIL
- TRAVELED WAY
- RAILROAD
- RETAINING WALL
- CENTERLINE
- SURVEY LINE
- CULVERT
- DROP INLET
- TROLLEY POLE
- POWER POLE
- TELEPHONE POLE
- TREES
- HEDGE

GROUND ELEVATION	DATUM	LINE
GRADE ELEVATION	DATUM	LINE

CURVE DATA	
DEFLECTION ANGLE	Δ
DEGREE OF CURVE	D
RADIUS OF CURVE	R
TANGENT DISTANCE	T
LENGTH OF CURVE	L
EXTERNAL DISTANCE	E
POINT OF INTERSECTION	P. I.
POINT OF CURVE	P. C.
POINT OF TANGENT	P. T.

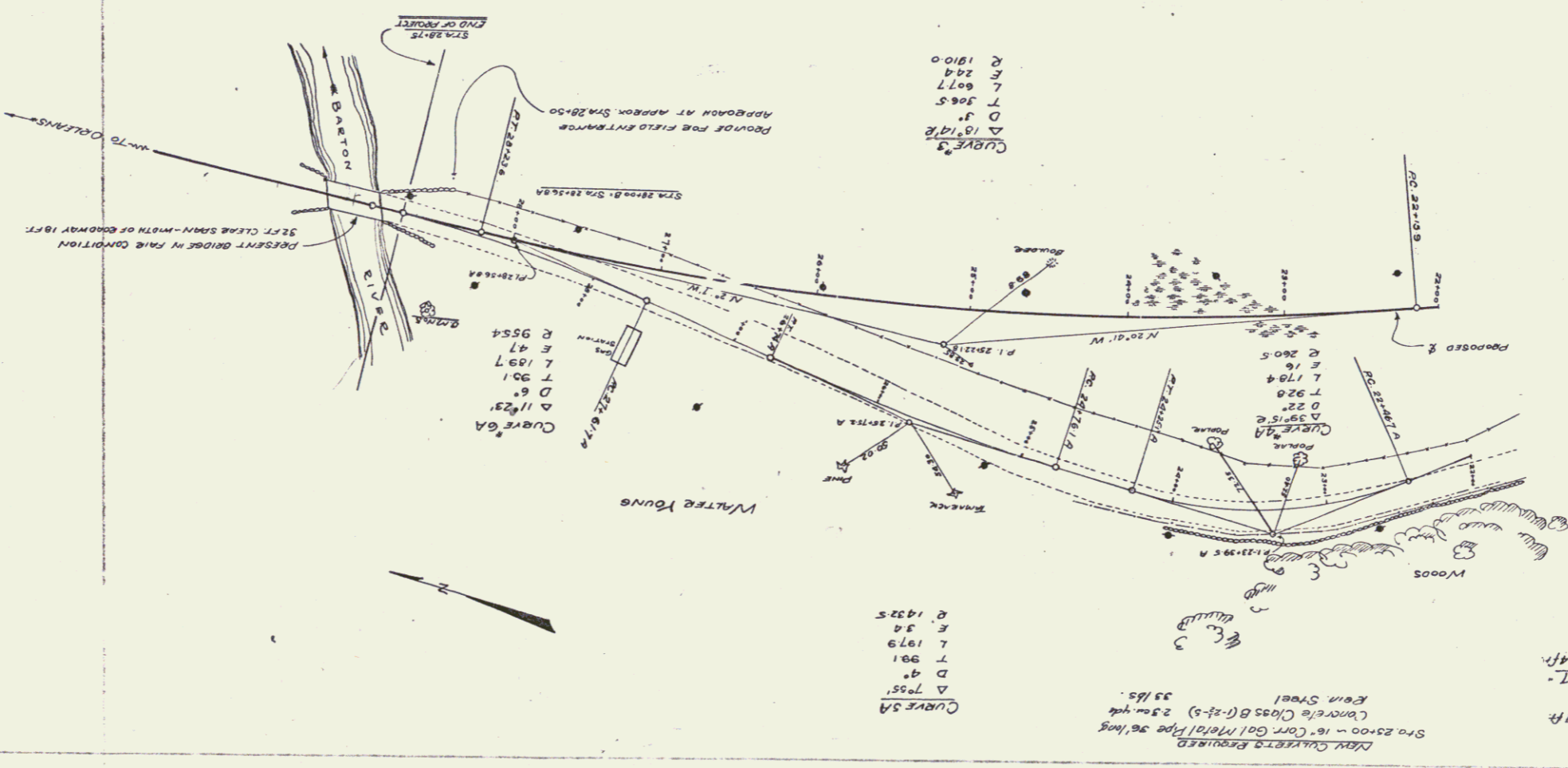
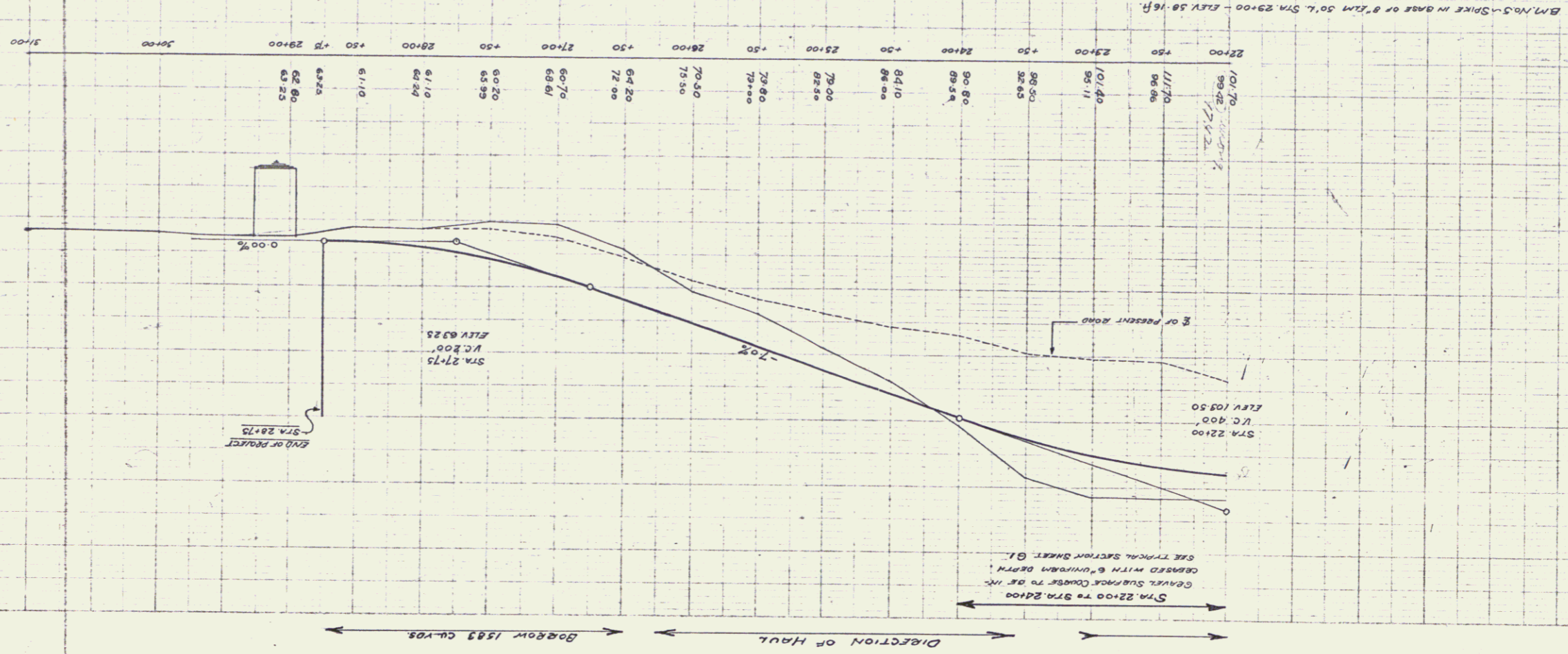
LAY OUT
1" = 500'

Approved: *H. E. Daignault*
Chief Engineer
DATE: March 20, 1926
SUBMITTED BY: *J. B. Burt*
Commissioner of Highways

RIGHT-OF-WAY DIVISION
TOWN FILE
PERPETUAL
Town of US 5
(To Be Returned To R.O.W. Division)

RECOMMENDED
DISTRICT ENGINEER
BUREAU OF PUBLIC ROADS
RECOMMENDED FOR APPROVAL
CHIEF ENGINEER
BUREAU OF PUBLIC ROADS
APPROVED
DIRECTOR - BUREAU OF PUBLIC ROADS

SERIES F No. 530 FILED
SHEET 7 OF 22

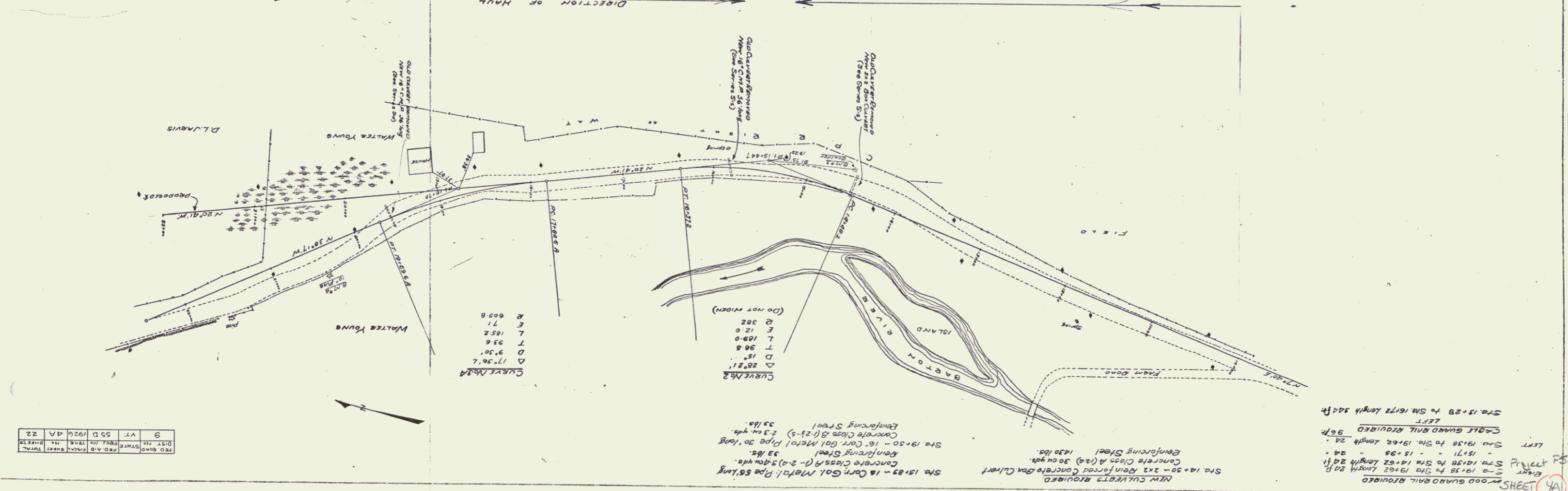
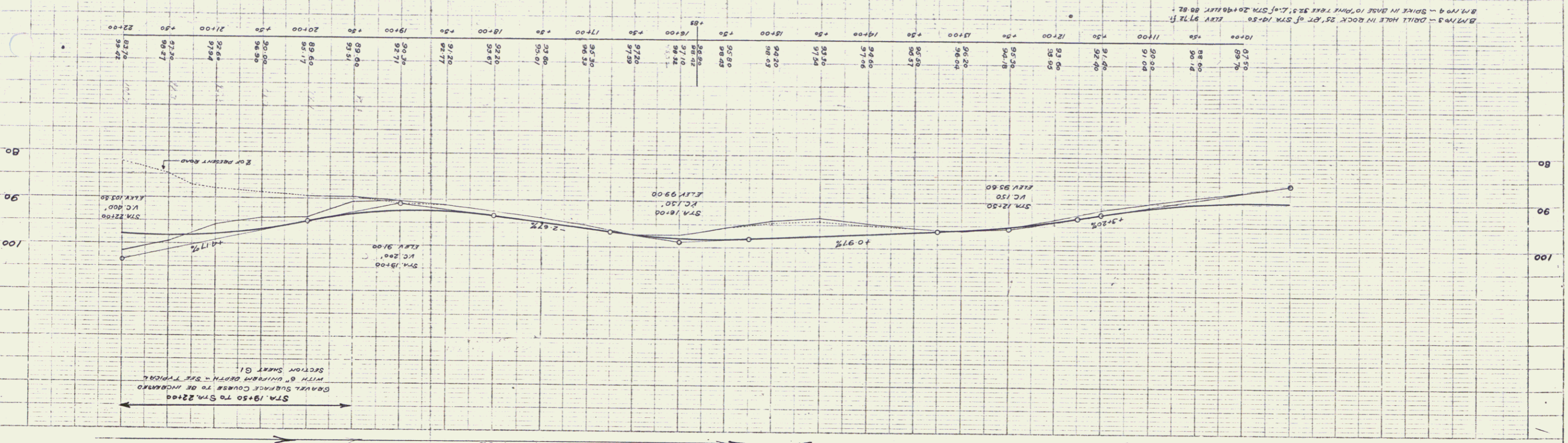


REV	DATE	BY	CHKD
1	10/20/55	J.S.	J.S.
2	11/10/55	J.S.	J.S.
3	12/15/55	J.S.	J.S.

Project F55D
 SHEET 5A
 CORRECTIONS REQUIRED
 STA 24+80 TO STA 28+75 LENGTH 397 FT
 STA 24+80 TO STA 28+75 LENGTH 397 FT
 TOTAL FOR SHEET = 174 FT

100
 95
 90

Series F No 55D Filed
SHEET (A) OF 22

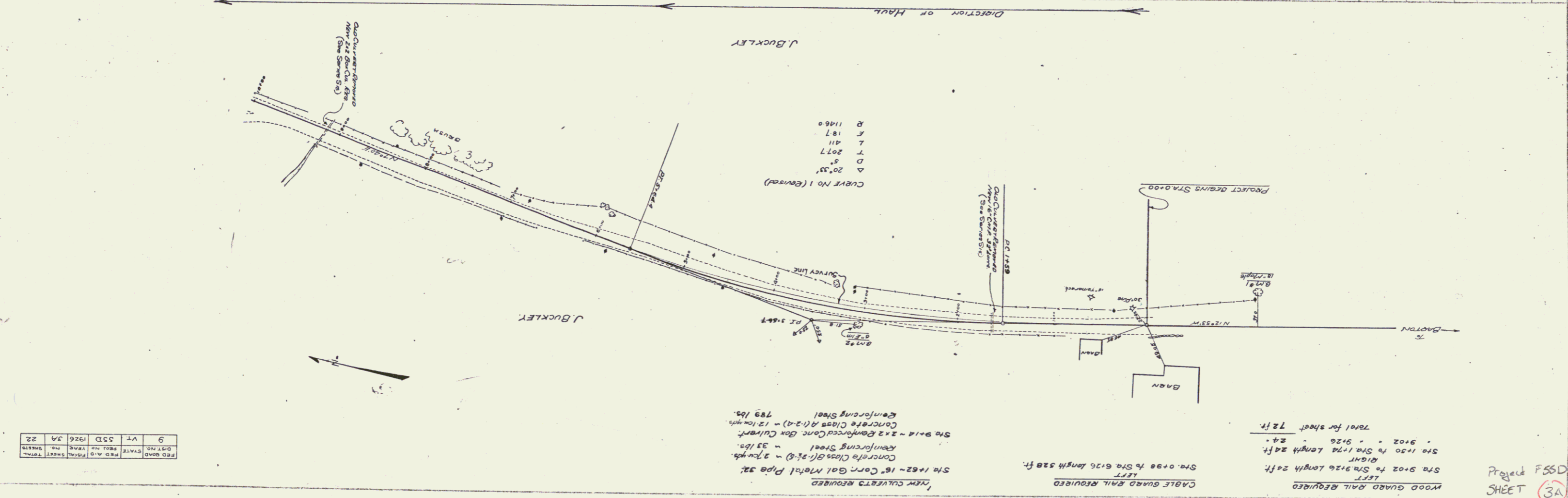
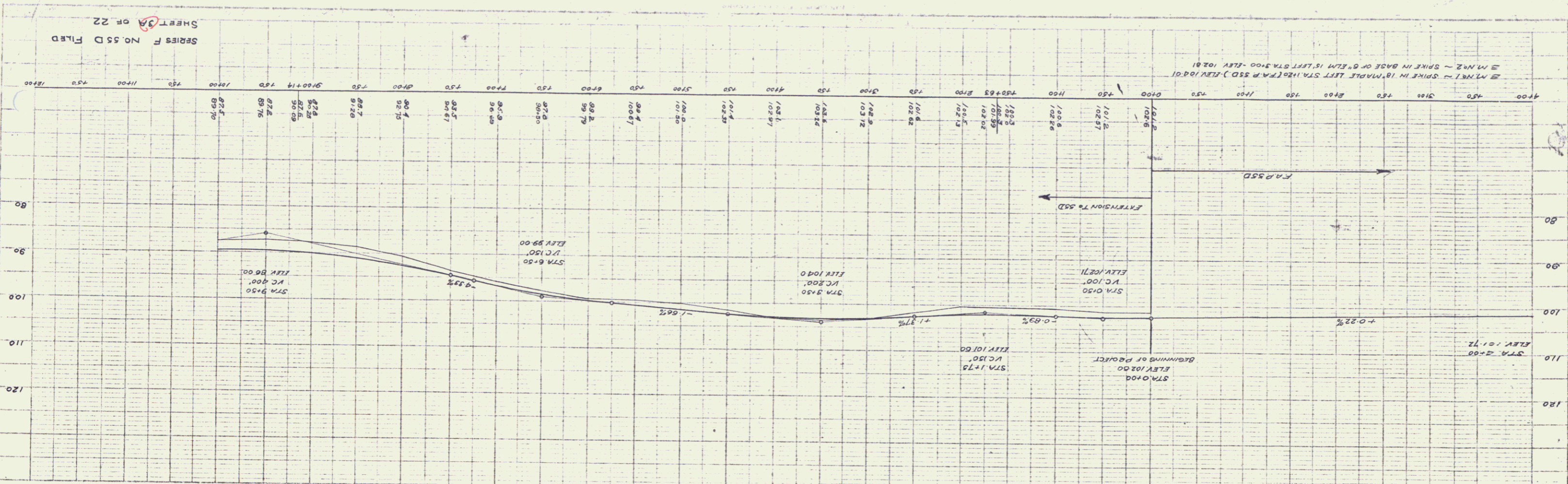


PRO. QUAD	NO. 10	DATE	NO. 10
DIST. NO.	10	SCALE	1/2\"/>
DATE	10/25/20	BY	MA
NO.	22		

PLAN
SCALE
1\"/>

PROJECT
NO. 10
DATE 10/25/20
BY MA

1



REV	DATE	BY	CHKD
9	VT	53D	1926 JA
22	VT	53D	1926 JA

Project F55D
SHEET 3A

Series F No. 55D Filed
SHEET 3A OF 22

CABLE GUARD RAIL REQUIRED
ON LEFT

Sta. 7+54	=	Sta. 9+30	Length	176 ft.
" 10+65	=	" 13+21	"	256 "

ON RIGHT

Sta. 1+00	=	Sta. 3+16	Length	216 ft.
" 7+55	=	" 9+23	"	168 "
" 10+47	=	" 12+15	"	168 "

TOTAL THIS SHEET 904 ft.

WOOD GUARD RAIL REQUIRED
ON LEFT

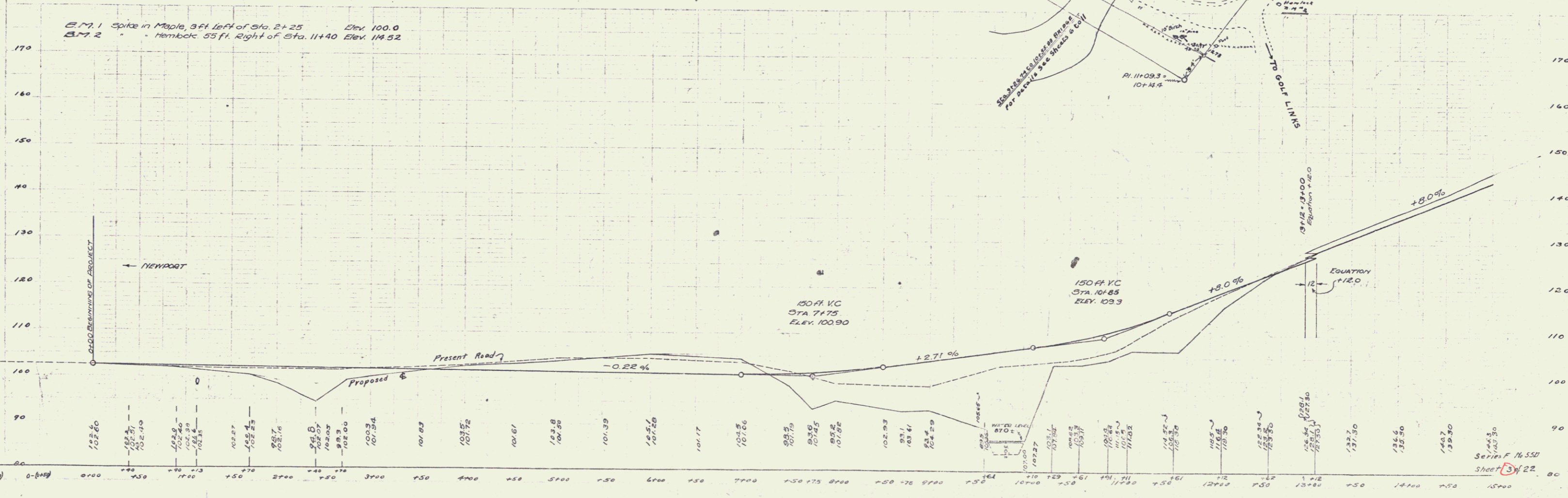
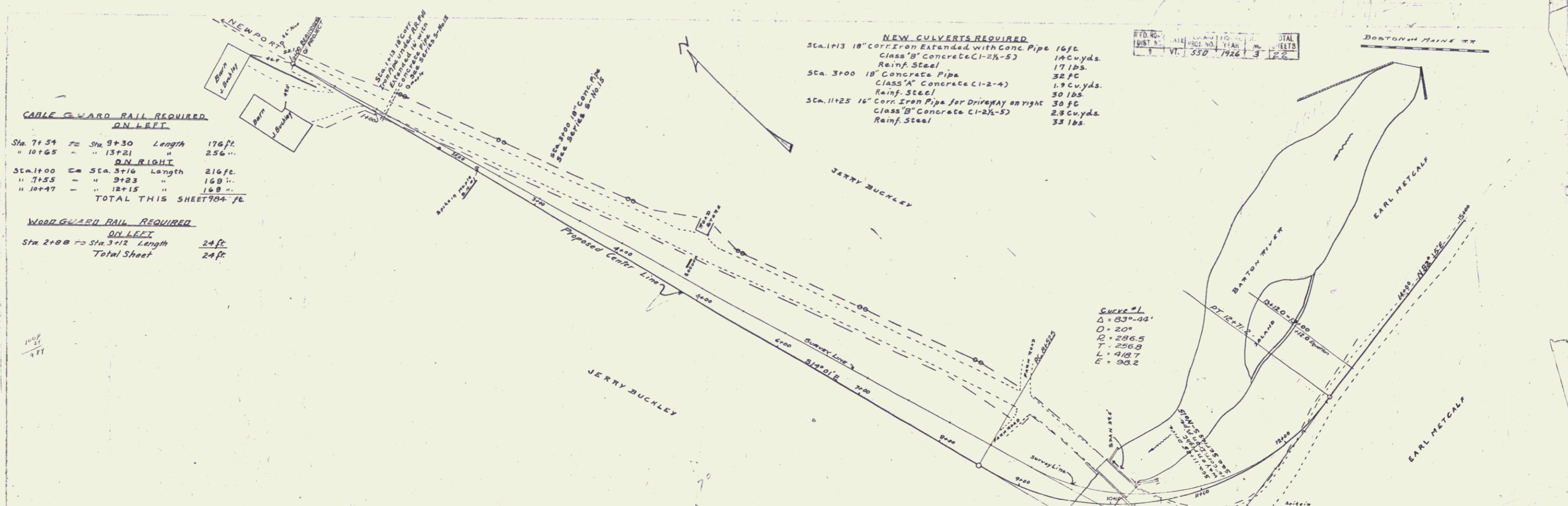
Sta. 2+00	=	Sta. 3+12	Length	24 ft.
-----------	---	-----------	--------	--------

Total Sheet 24 ft.

NEW CULVERTS REQUIRED

Sta. 1+13	18" CORR. IRON EXTENDED WITH CONC. PIPE	16 ft.
	CLASS "B" CONCRETE (C1-2X-5)	14 CUYDS.
	REINF. STEEL	17 lbs.
Sta. 3+00	18" CONCRETE PIPE	32 ft.
	CLASS "A" CONCRETE (C1-2-4)	1.9 CUYDS.
	REINF. STEEL	30 lbs.
Sta. 11+25	16" CORR. IRON PIPE FOR DRIVEWAY ON RIGHT	30 ft.
	CLASS "B" CONCRETE (C1-2X-5)	2.3 CUYDS.
	REINF. STEEL	33 lbs.

DATE	NOV 1922
DIST. NO.	550-1926
SHEET NO.	22
TOTAL SHEETS	22



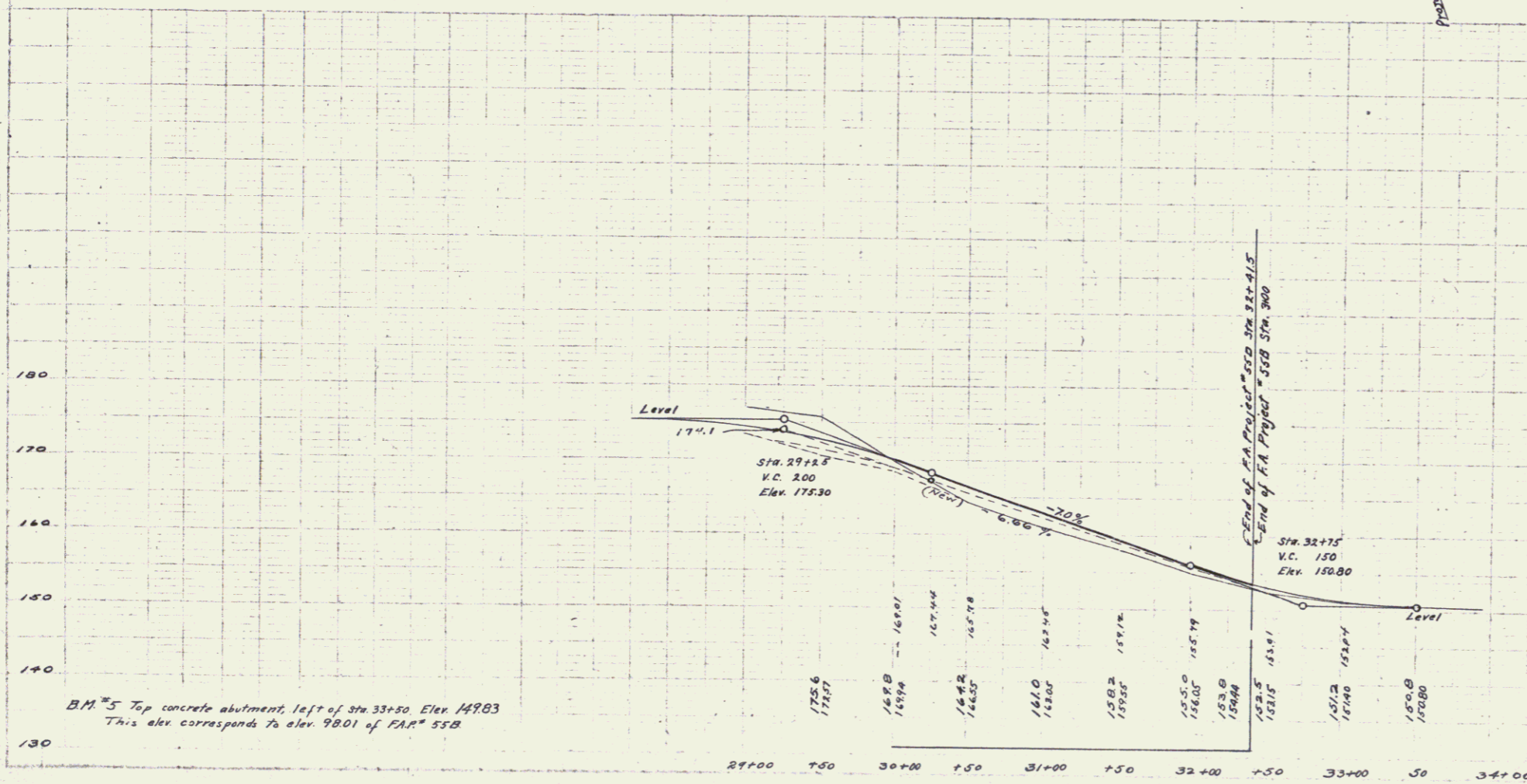
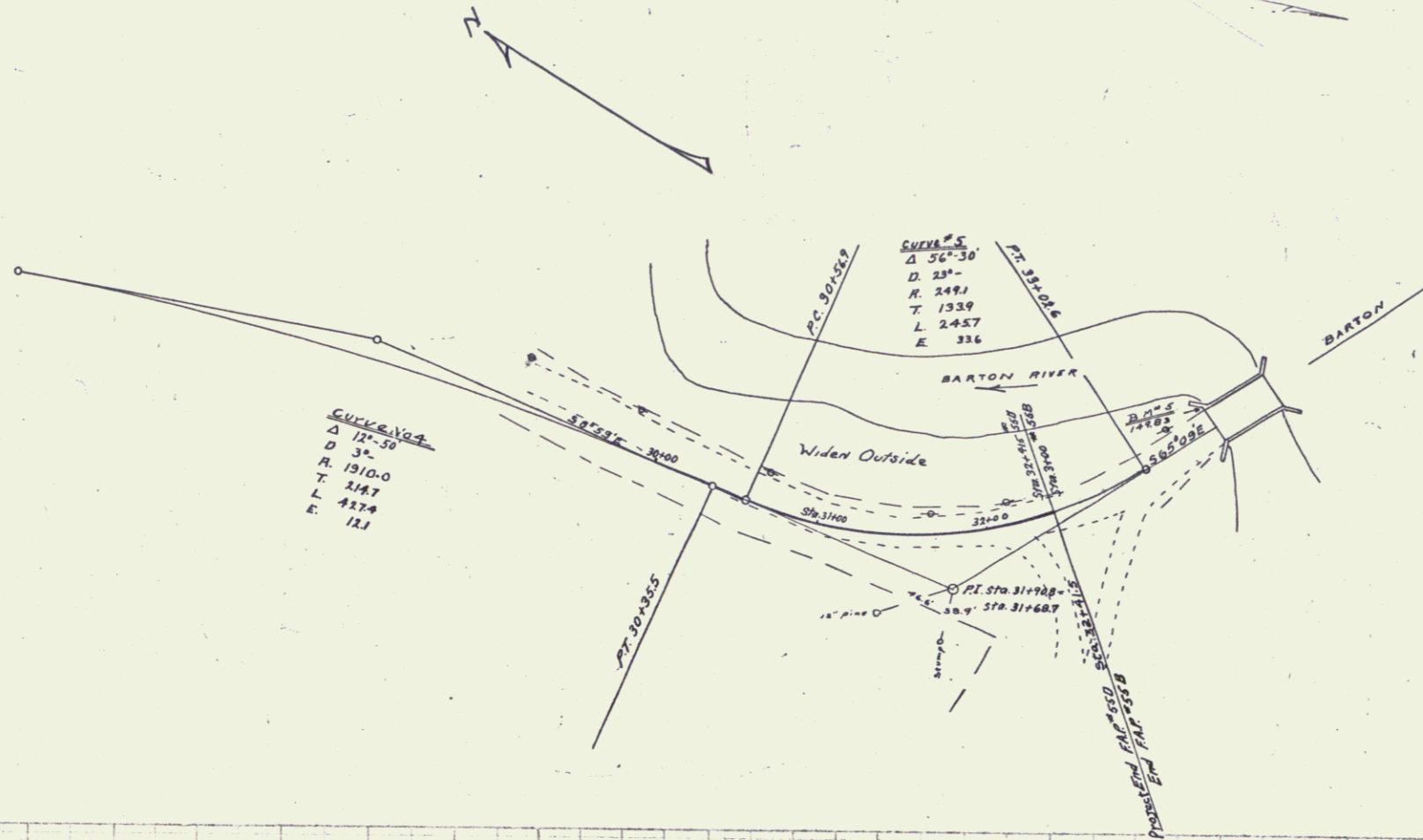
PLANNING
 CIVIL ENGINEER
 277 W. 10th St.
 ST. LOUIS, MO.

PLANNING
 CIVIL ENGINEER
 277 W. 10th St.
 ST. LOUIS, MO.

SERIES F. N. 550
 SHEET 22

CABLE GUARD RAIL REQUIRED
 ON LEFT
 SEA 30+00 to SEA 32+40 Length 240ft

9 YR 550 1926 5 22



7