

**CABLE GUARD RAIL REQUIRED**  
**ON LEFT**

Sta. 7+54	=	Sta. 9+30	Length	176 ft.
" 10+65	=	" 13+21	"	256 "

**ON RIGHT**

Sta. 1+00	=	Sta. 3+16	Length	216 ft.
" 7+55	=	" 9+23	"	168 "
" 10+47	=	" 12+15	"	168 "

TOTAL THIS SHEET 904 ft.

**WOOD GUARD RAIL REQUIRED**  
**ON LEFT**

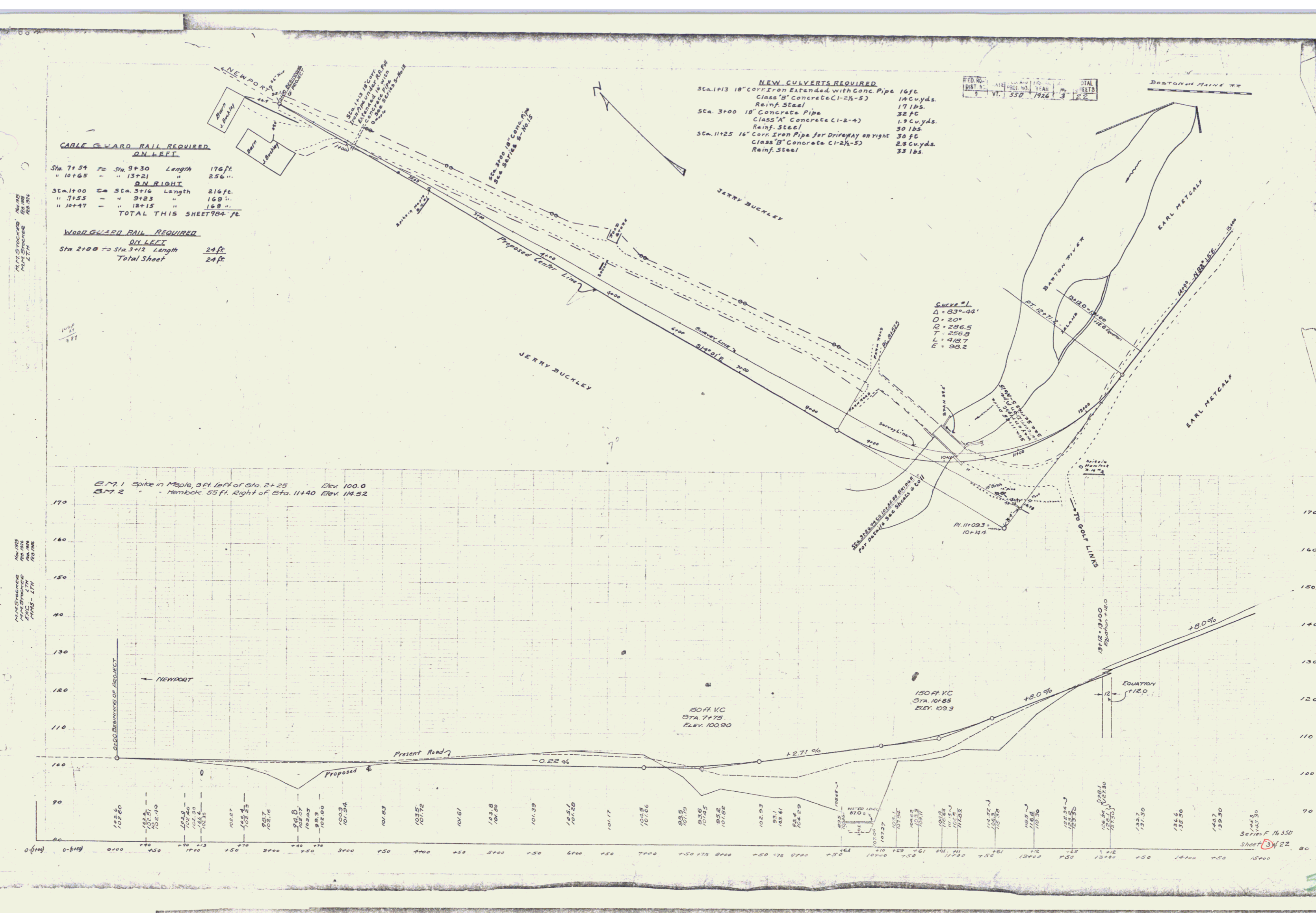
Sta. 2+00	=	Sta. 3+12	Length	24 ft.
-----------	---	-----------	--------	--------

Total Sheet 24 ft.

**NEW CULVERTS REQUIRED**

Sta. 1+13	18" CORR. IRON EXTENDED WITH CONC. PIPE	16 ft.
	CLASS "B" CONCRETE (C1-2X-5)	14 CUYDS.
	REINF. STEEL	17 lbs.
Sta. 3+00	18" CONCRETE PIPE	32 ft.
	CLASS "A" CONCRETE (C1-2-4)	1.9 CUYDS.
	REINF. STEEL	30 lbs.
Sta. 11+25	16" CORR. IRON PIPE FOR DRIVEWAY ON RIGHT	30 ft.
	CLASS "B" CONCRETE (C1-2X-5)	2.8 CUYDS.
	REINF. STEEL	33 lbs.

DATE	NOV 1922
DIST. NO.	550-1926
SHEET NO.	22



PLANNING  
 CIVIL ENGINEER  
 277 W. 10th St.  
 PORTLAND, ME.

PLANNING  
 CIVIL ENGINEER  
 177 W. 10th St.  
 PORTLAND, ME.

SERIES F. N. 550  
 SHEET 22