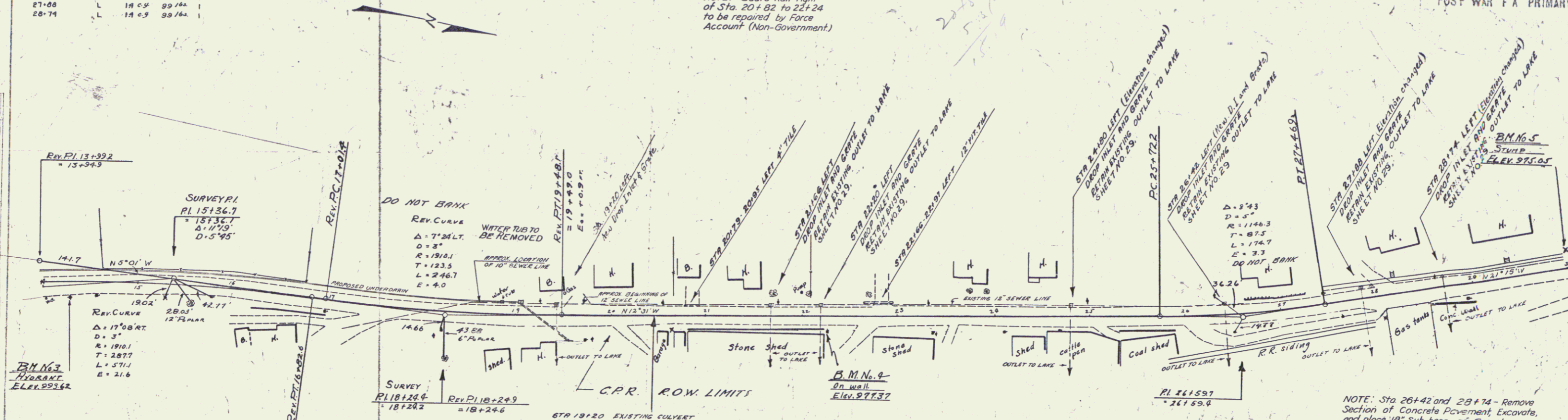


NEW DROP INLETS WITH GRATES REQUIRED

STATION	L-R	CONC.	STEEL GRATES
21+66	L	14 C 5	39 1/4 x 1
22+20	L	14 C 5	39 1/4 x 1
24+00	L	14 C 5	39 1/4 x 1
26+42	L	14 C 5	39 1/4 x 1
27+08	L	14 C 5	39 1/4 x 1
28+74	L	14 C 5	39 1/4 x 1

POST WAR F A PRIMARY
55(12) 4 27

NOTE: Guard Rail right of Sta 20+82 to 22+24 to be repaired by Force Account (Non-Government)



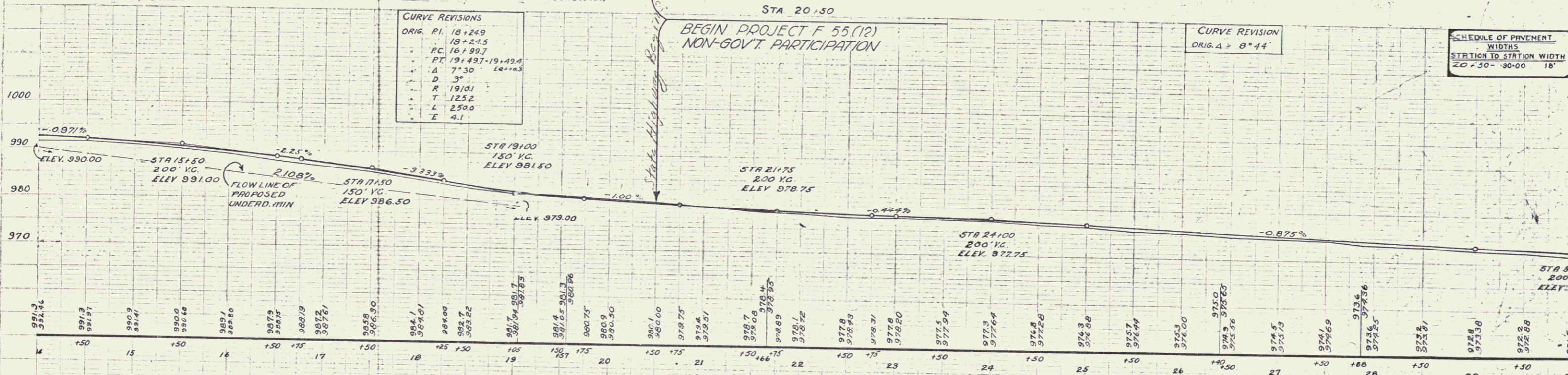
CURVE REVISIONS

ORIG. P.I.	REV. P.I.
18+24.5	18+24.5
16+99.7	16+99.7
19+49.7-19+49.4	19+49.7-19+49.4
7+30	44+14.3
D	3'
R	1910.1
T	123.5
L	250.0
E	4.1

CURVE REVISION
ORIG. Δ = 8°44'

SCHEDULE OF PAVEMENT

WIDTH	STATION TO STATION WIDTH
20' ± 50' - 30' ± 00'	18'



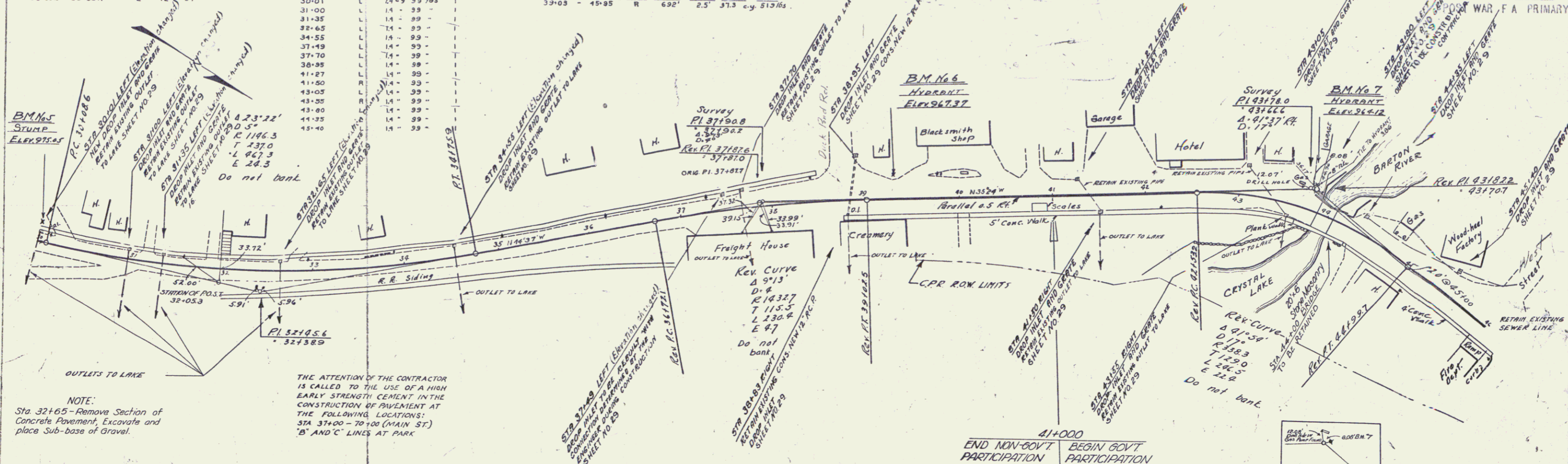
BM No. 3 HYDRANT NGT. 13.0' RT. STA. 14+27 ELEV. 993.62
 BM No. 4 CORNER CONC. RETAIN. WALL 13.5' RT. STA. 22+24 ELEV. 977.37
 BM No. 5 SPIKE IN ROOT #1 STUMP 20.0' RT. STA. 30+00 ELEV. 975.05

NEW REIN CONC. PIPE CULVERTS REQUIRED
STATION TO STATION R 12' 64"
38+95L - 38+83R

NEW DRAIN PIPES WITH GRATES REQUIRED
STATION L CONCR STEEL GRATES
30+01 L 14' 99" T

NEW CONCRETE GUTTER REQUIRED
STATION TO STATION L 2.5' 37.3' c.y. 513.765
39+03 - 45+95

13 AND FISCAL SHEET NO. 5
53101 5 27



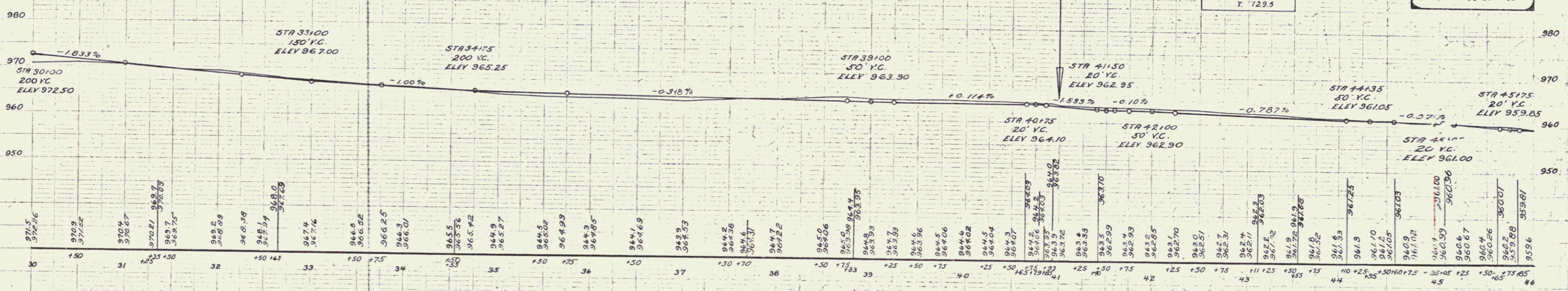
NOTE:
Sta. 32+65 - Remove Section of Concrete Pavement, Excavate and place Sub-base of Gravel.

THE ATTENTION OF THE CONTRACTOR IS CALLED TO THE USE OF A HIGH EARLY STRENGTH CEMENT IN THE CONSTRUCTION OF PAVEMENT AT THE FOLLOWING LOCATIONS:
STA 37+00 - 70+00 (MAIN ST)
'B' AND 'C' LINES AT PARK

CURVE REVISIONS
ORIG PI 37+816
PC 37+871
PT 38+722
39+026

CURVE REVISIONS
ORIG PI 43+826
PC 43+701
PT 44+99.6
T 129.5

SCHEDULE OF PAVEMENTS
WIDTHS
STATION TO STATION WIDTH
30+00 34+00 18'
34+00 39+06 VARIABLE
39+06 46+00 30'



BM. No. 5 Same in R/W of STUMP 200' LT. STA. 30+00. ELEV. 975.05
BM. No. 6. HYDRANT NUT. 25.0' LT. STA. 39+31. ELEV. 967.37
BM. No. 7. HYDRANT NUT. 28.0' LT. STA. 43+78. ELEV. 964.12

BARTON - IRASBURG
SERIES P NO 55(12)
SHEET 5 OF 27

3

NEW DROP INLETS REQUIRED

STATION	L or R	CONC R	STEEL GRATES
46+05	R	1.1	33
52+70	L	1.1	33
57+20	L	1.4	33

NEW CATCH BASINS REQUIRED

STATION	LEFT	RIGHT
49+70		
52+05		
51+00		
53+05		
54+41		
56+62		
57+10		
59+10		
59+33		
56+43		

NEW REIN. CONC PIPE CULVERTS REQUIRED

STATION TO STATION	L or R	SIZE	LENGTH
46+05	R	12" 8'	
49+70R	R	15" 36"	
51+80R	R	12" 40"	
54+41R	R	12" 32"	
56+43R	R	12" 32"	
52+04L	L	12" 104'	
53+89	L	12" 272'	
56+62	L	12" 248"	
59+10	L	12" 90"	

NEW CONC CURB AND GUTTER REQUIRED

STATIONS	L or R	HEIGHT	LENG CONC R	STEEL
46+00-47+30	R	6"	200	2.8 Cyl 82 lbs
53+30-46+00	R	6"	10' 0.6	8
70+00-40+00	L	6"	200	1.3 - 150 -
48+201-48+451	R	6"	67	4.3 50"

NEW CONCRETE GUTTER REQUIRED

STATIONS	L or R	LENGTH	WIDTH	CONC R	STEEL
54+70-57+10	R	240'	20"	10.4 Cyl 180 lbs	
57+40-59+40	R	200'	20"	8.6	150 -
59+70-53+30	R	20'	20"	0.9	15 -
47+50-47+90	R	20'	20"	7.0	53
49+50-54+70	R	320'	3.5'	202	44 yds

ONE COURSE CEMENT CONCRETE SIDEWALK REQUIRED

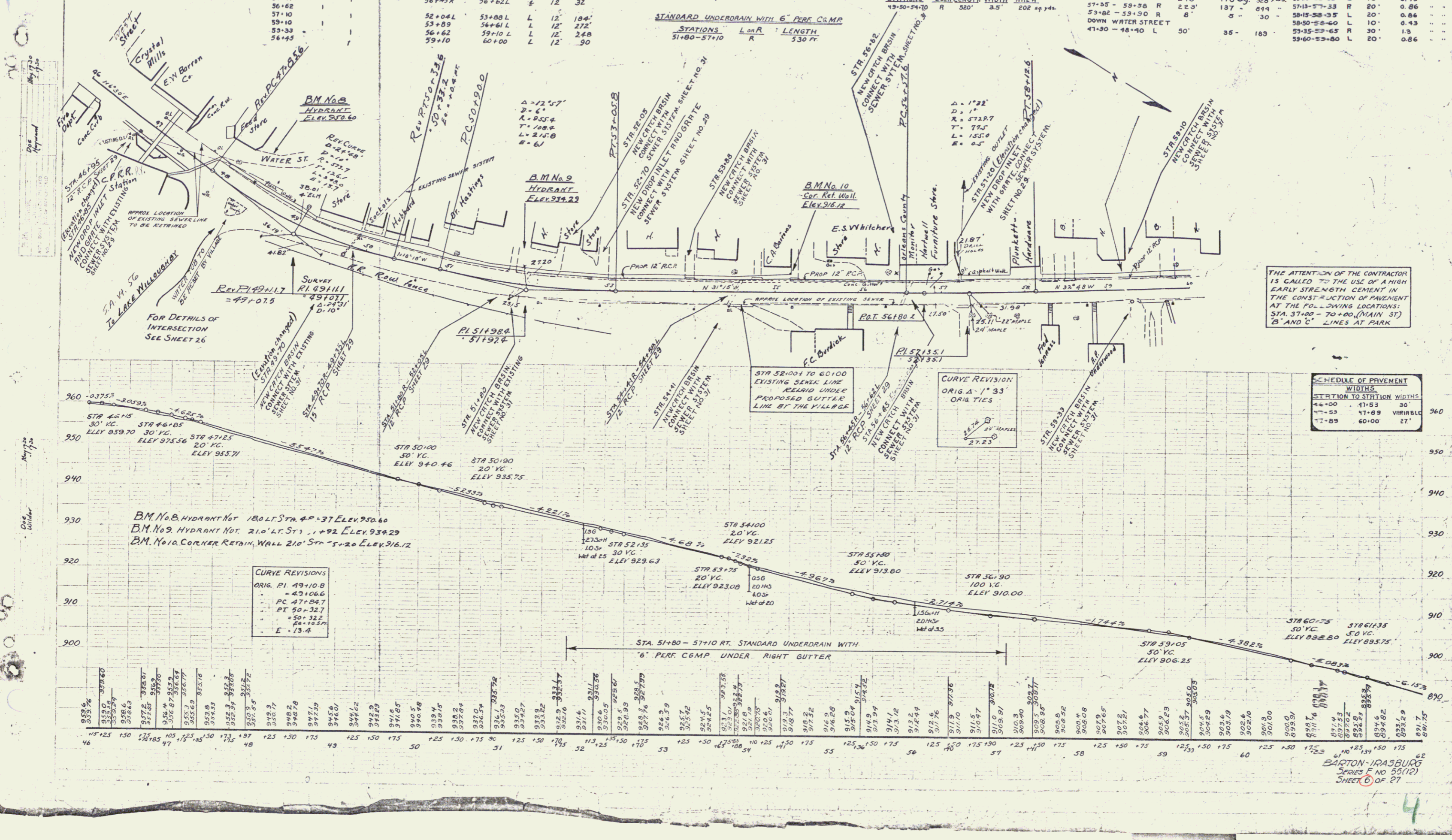
STATIONS	L or R	LENGTH	WIDTH	CONC
48+00-40+00	L	1200	5'	467 sq Yds

NEW CONCRETE RETAINING WALL REQUIRED

STATION TO STATION	L or R	LENGTH	CONC R	STEEL
54+70 - 57+15	R	245'	178.64	328 / 60
57+55 - 59+58	R	2.23'	137	814 -
59+82 - 59+90	R	8'	5	30 -
47+80 - 48+90	L	50'	35	183 -

NEW CONCRETE RETAINING WALL REQUIRED

STATION TO STATION	L or R	LENGTH	CONC R	STEEL
54+70 - 57+15	R	245'	178.64	328 / 60
57+55 - 59+58	R	2.23'	137	814 -
59+82 - 59+90	R	8'	5	30 -
47+80 - 48+90	L	50'	35	183 -
59+60 - 53+80	L	20'	0.86	

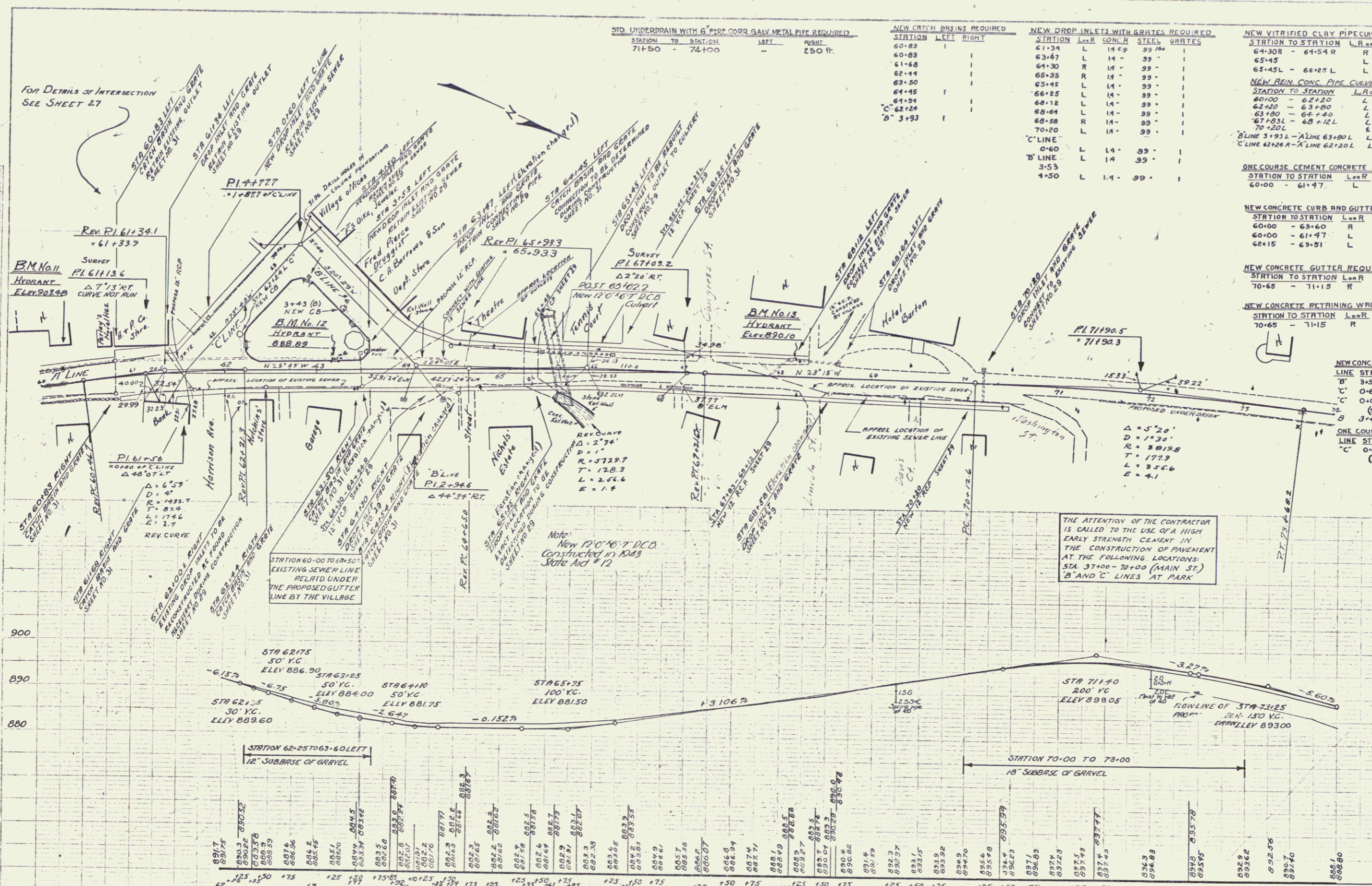


CURVE REVISIONS
 ORIG. P.I. 49+10.8
 = 49+10.66
 PC 47+04.7
 PT 50+32.7
 = 50+32.2
 P2+10.25
 E = 13.4

THE ATTENTION OF THE CONTRACTOR IS CALLED TO THE USE OF A HIGH EARLY STRENGTH CEMENT IN THE CONSTRUCTION OF PAVEMENT AT THE FOLLOWING LOCATIONS:
 STA. 37+00 - 70+00 (MAIN ST)
 'B' AND 'C' LINES AT PARK

SCHEDULE OF PAVEMENT WIDTHS

STATION TO STATION	WIDTHS
46+00 - 47+30	30
47+30 - 51+80	VARIABLE
51+80 - 60+00	27



STD. UNDERDRAIN WITH 6" CORR. GALV. METAL PIPE REQUIRED

STATION	TO STATION	LEFT	RIGHT	DEPTH
71+50	74+00			250 FT.

NEW GRATE BASINS REQUIRED

STATION	LEFT	RIGHT
60+83		
61+34		
63+47		
64+30		
65+35		
66+85		
68+12		
70+20		

NEW DROP INLETS WITH GRATES REQUIRED

STATION	LEFT	RIGHT	CONC. R.	STEEL	GRATES
61+34	L		14"	39"	
63+47	L		14"	39"	
64+30	R		14"	39"	
65+35	R		14"	39"	
66+85	L		14"	39"	
68+12	L		14"	39"	
70+20	L		14"	39"	
0+60					
B' LINE	L		14"	39"	
C' LINE	L		14"	39"	

NEW VITRIFIED CLAY PIPE COVERTS REQUIRED

STATION TO STATION	CONC. R.	SIZE	LENGTH
64+30R - 64+54R	R	12"	24'
65+45	L	12"	8'
65+45L - 66+25L	L	12"	80'

POST WAR P.A. PRIMARY

STATION TO STATION	CONC. R.	SIZE	LENGTH
64+30R - 64+54R	R	12"	24'
65+45	L	12"	8'
65+45L - 66+25L	L	12"	80'

NEW REIN. CONC. PIPE COVERTS REQUIRED

STATION TO STATION	CONC. R.	SIZE	LENGTH
60+00 - 62+20	L	12"	220'
62+20 - 63+80	L	12"	160'
63+80 - 64+40	L	12"	160'
67+20L - 68+12L	L	12"	36'
70+20L	L	12"	36'
B' LINE 5+193L - A' LINE 63+80L	L	12"	72'
C' LINE 42+24R - A' LINE 62+20L	L	12"	24'

ONE COURSE CEMENT CONCRETE SIDEWALK REQUIRED

STATION TO STATION	CONC. R.	WIDTH	LENGTH	CONC.	STEEL
60+00 - 61+47	L	3'	147'	816	14 yds.

NEW CONCRETE CURB AND GUTTER REQUIRED

STATION TO STATION	CONC. R.	HEIGHT	LENGTH	CONC. R.	STEEL
60+00 - 63+60	R	6"	360'	8 1/2	270 lbs.
60+00 - 61+47	L	6"	147'	9.3	110 "
62+15 - 63+51	L	10"	142'	11.3	107 "

NEW CONCRETE GUTTER REQUIRED

STATION TO STATION	CONC. R.	WIDTH	LENGTH	CONC. R.	STEEL
70+65 - 71+15	R	2.0'	40'	17	17 c.yds. 30 lbs.

NEW CONCRETE RETAINING WALL REQUIRED

STATION TO STATION	CONC. R.	LENGTH	CONC. R.	STEEL
70+65 - 71+15	R	50'	32.7	18.5 "

NEW CONCRETE CURB AND GUTTER REQUIRED

LINE	STR - STR	CONC. R.	HEIGHT	LENGTH	CONC. R.	STEEL
B'	3+50 - 4+50	L	10.5'	10'	8.4	7.3 lbs.
C'	0+60 - 1+60	R	10.5'	10'	8.3	7.3 lbs.
C'	0+08 - 5+00	L	13.75'	6'	10.0	11.6 lbs.
B'	3+47 - 5+00	R	15.3'	6'	9.8	11.5 "

ONE COURSE CEMENT CONCRETE SIDEWALK

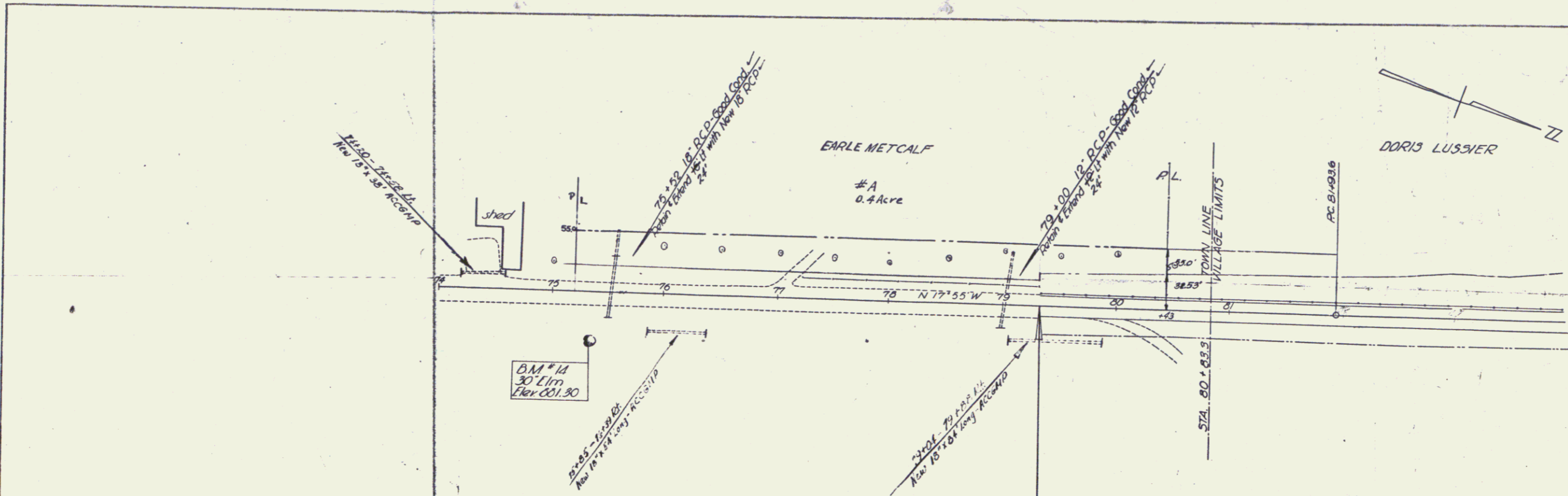
LINE	STR - STR	CONC. R.	WIDTH	LENGTH	CONC.	STEEL
C'	0+08 - 5+00	L	5'	157'	87.2	14 yds.

SCHEDULE OF PAVEMENT WIDTHS

STATION TO STATION	WIDTHS
60+00 - 60+89	VARIABLE
60+89 - 68+25	34'
68+25 - 70+50	27'
70+50 - 74+00	18'

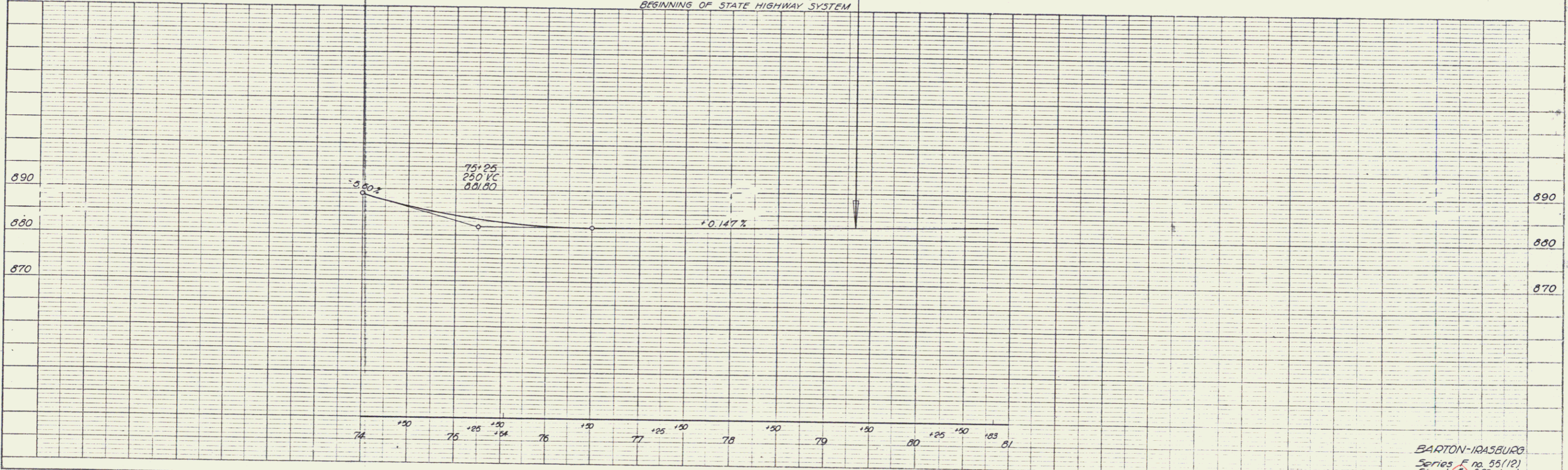
THE ATTENTION OF THE CONTRACTOR IS CALLED TO THE USE OF A HIGH EARLY STRENGTH CEMENT IN THE CONSTRUCTION OF PAVEMENT AT THE FOLLOWING LOCATIONS: STA. 37+00 - 70+00 (MAIN ST.) B' AND C' LINES AT PARK

BM. No. 11 Hydrant Nut 16.0' LT. STA. 60+26 ELEV. 903.48
 BM. No. 12 Hydrant Nut 19.5' LT. STA. 63+17 ELEV. 888.89
 BM. No. 13 Hydrant Nut 18.5' LT. STA. 68+17 ELEV. 890.10



Parcel	Instr.	Date	Grantor	Grantee	Recorded Book	Page	Date	Remarks
#A	W.D.O.E.	1-3-53	Earle S. & Mary Metcalf	St. of Va.	Barton	48	24	1-16-53

STA 79 + 33.3
END OF VILLAGE CONSTRUCTION
BEGINNING OF STATE HIGHWAY SYSTEM

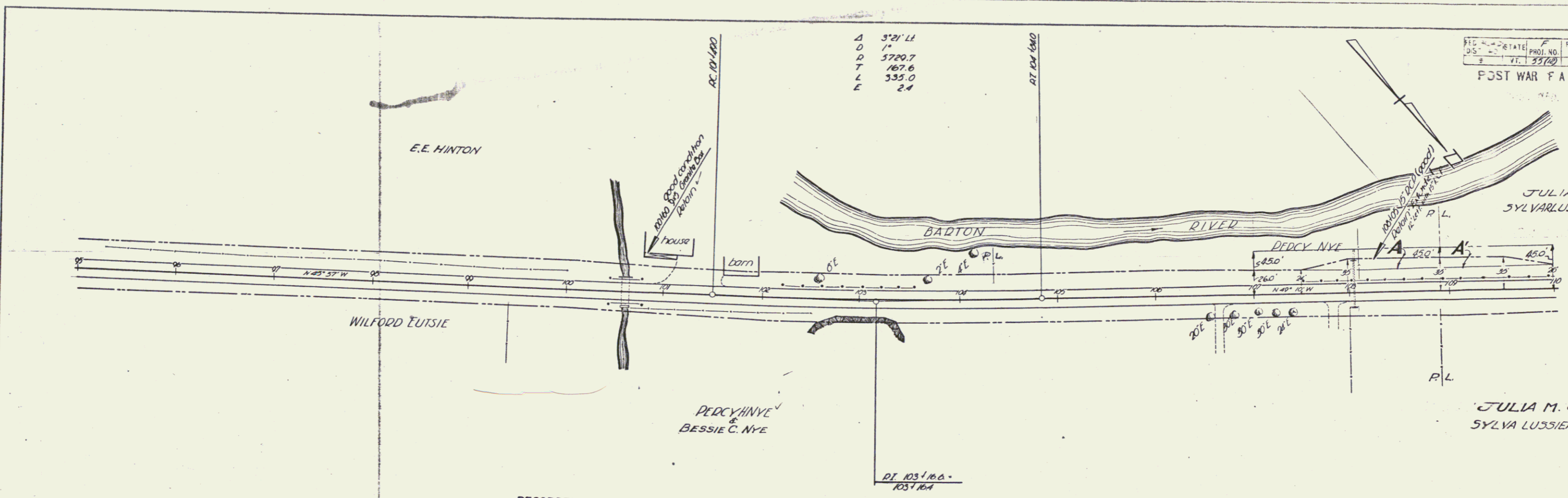


PLAN
CHECKED BY: [Signature]
DATE: [Date]
NOTE BOOK NO. [Number]
PAGE NO. [Number]

PROFILE
CHECKED BY: [Signature]
DATE: [Date]
NOTE BOOK NO. [Number]
PAGE NO. [Number]

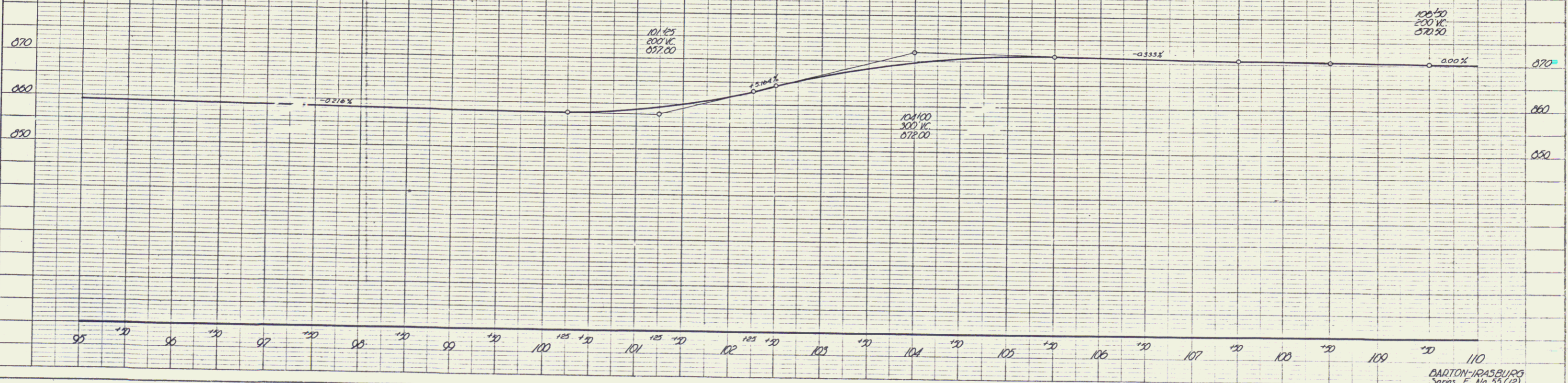
FIG. NO. STATE FISCAL SHEET TOTAL
 35-100 VT. 33702 TEAM 1 NO. SHEETS
 120 27
 POST WAR F.A. PRIMARY

Δ 3'21" LI
 Δ 0 1'
 Δ 7 5720.7
 Δ 1 167.6
 Δ 2 335.0
 Δ 3 24



PARCEL INSTRUMENT DATE GRANTOR GRANTEE RECORDED BARTON BOOK PAGE DATE REMARKS

PARCEL	INSTRUMENT	DATE	GRANTOR	GRANTEE	RECORDED BARTON BOOK PAGE DATE	REMARKS
1A	W.D.O.E.	9-2-48	PERCY NYE & BESSIE C. NYE	ST. OF VT.	47 225 9-11-48	
1A	W.D.O.E.	7-27-48	JULIA M. & SYLVIA LUSSIER	ST. OF VT.		



PLAN
 SURVEYED BY
 DATE
 CHECKED BY
 DATE
 REVISIONS

PROFILE
 SURVEYED BY
 DATE
 CHECKED BY
 DATE
 REVISIONS

FED. DIST.	STATE	PROJ. NO.	FISCAL YEAR	SHEET NO.	TOTAL SHEETS
9	VT	35707	77	5	5

POST WAR FA PRIMARY

PLAN	DATE	BY	CHECKED
DESIGNED			
ACCOMPANIED			
NOTED			
NO.			

PROFILE	DATE	BY	CHECKED
DESIGNED			
ACCOMPANIED			
NOTED			
NO.			

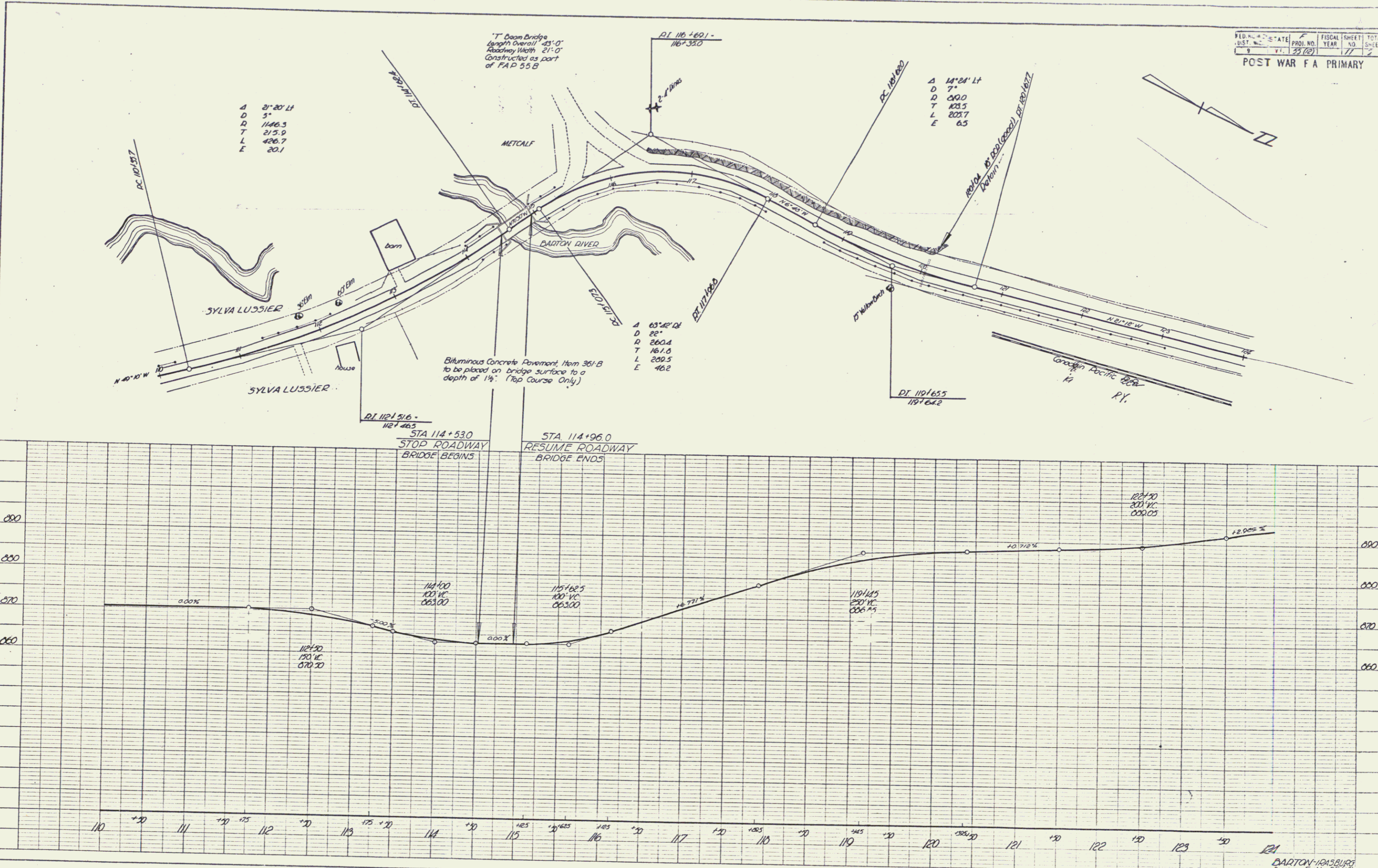


PLATE 1 - PLAN-PROFILE OF P & R STANDARD
 HERTZ & ISAAC CO., NEW YORK
 H & I Co. No. 348-C

BARTON-HASBROOK
 Series F No. 53 (12)
 Sheet 5 of 27 Sheets

PLAN	DATE
STARTED	BY
DESIGNED	BY
CHECKED	BY
APPROVED	BY
NO.	

PROFILE	DATE
STARTED	BY
DESIGNED	BY
CHECKED	BY
APPROVED	BY
NO.	

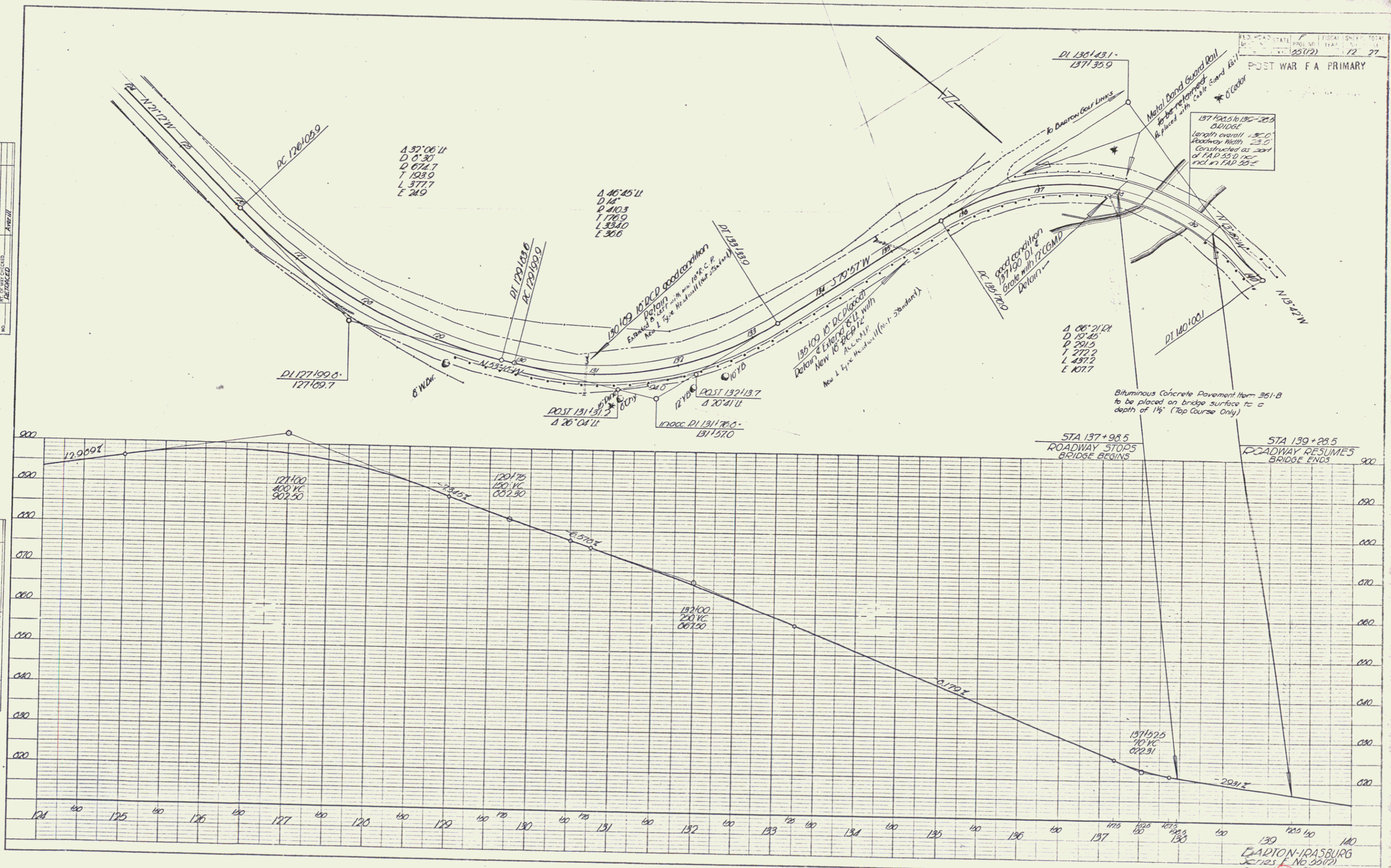
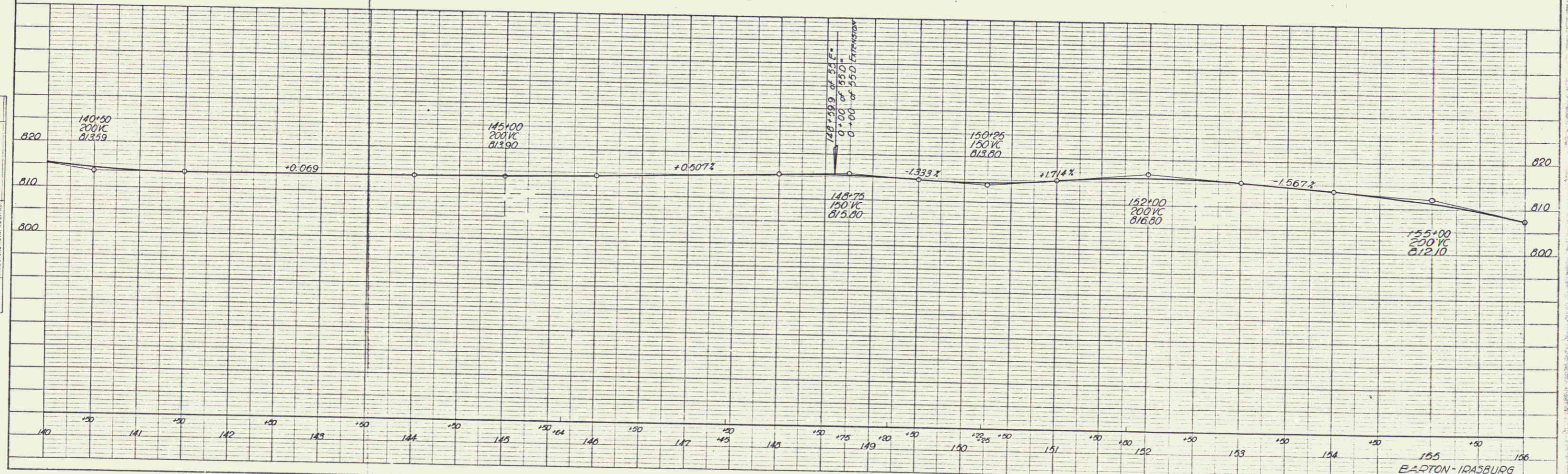
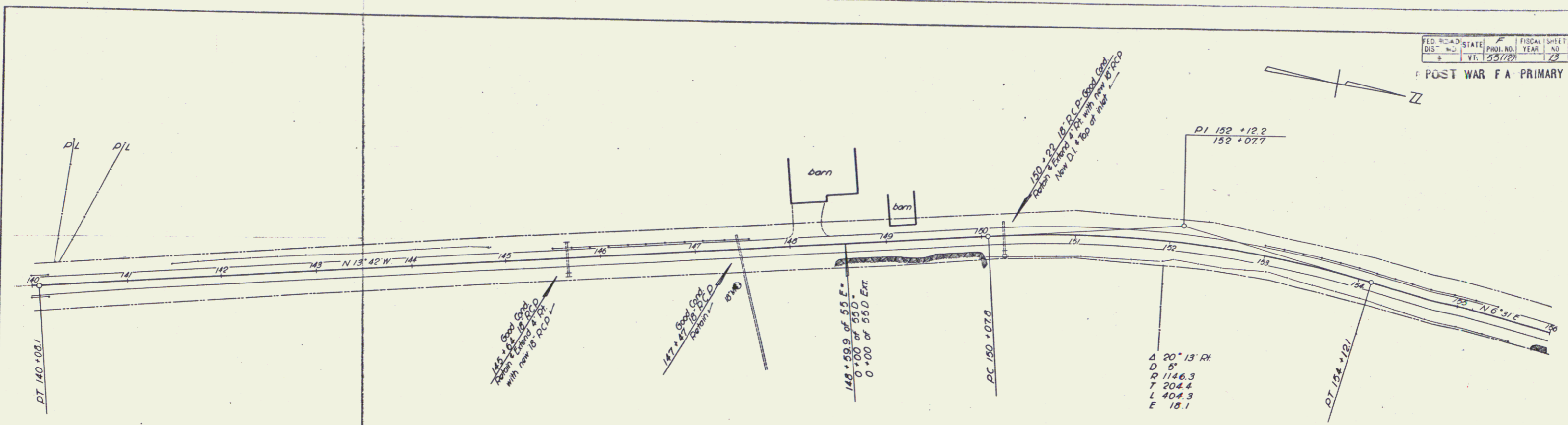


PLATE 1 - PLAN - PROFILE OF P. & E. STATIONS
 NEUFFEL & EISEN CO., NEW YORK
 K & E CO. NO. 348-C

EADON-SPASBURG
 Series E No. 22(2)
 Sheet 12 of 27 Sheets

FED. ROAD DIST. NO.	STATE	FISCAL YEAR	SHEET NO.	TOTAL SHEETS
			27	27

POST WAR F.A. PRIMARY



PLAN

DATE	BY
1/2/48	
DESIGNED BY	
CHECKED BY	
IN CHARGE	
NOTE BOOK NO.	
PROJECT NO.	

PROFILE

DATE	BY
DESIGNED BY	
CHECKED BY	
IN CHARGE	
NOTE BOOK NO.	
PROJECT NO.	

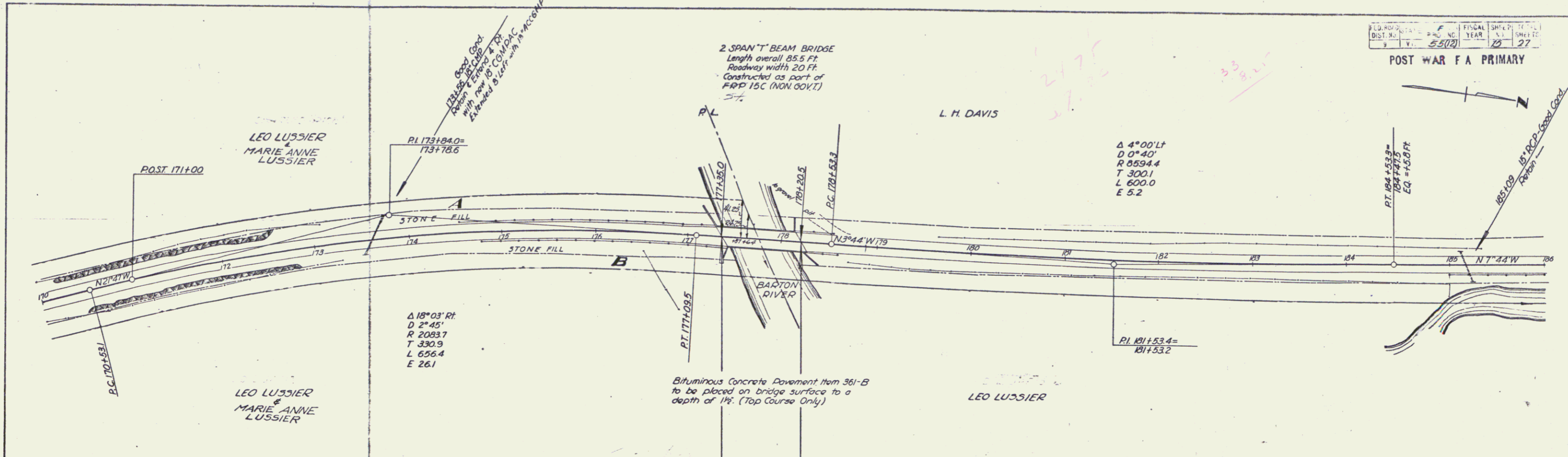
PLATE 1 - PLAN-PROFILE © P. H. & K. E. STANBARD
NEWYORK & ELIZABETH CO., NEW YORK

M & E ON NO. 248-110

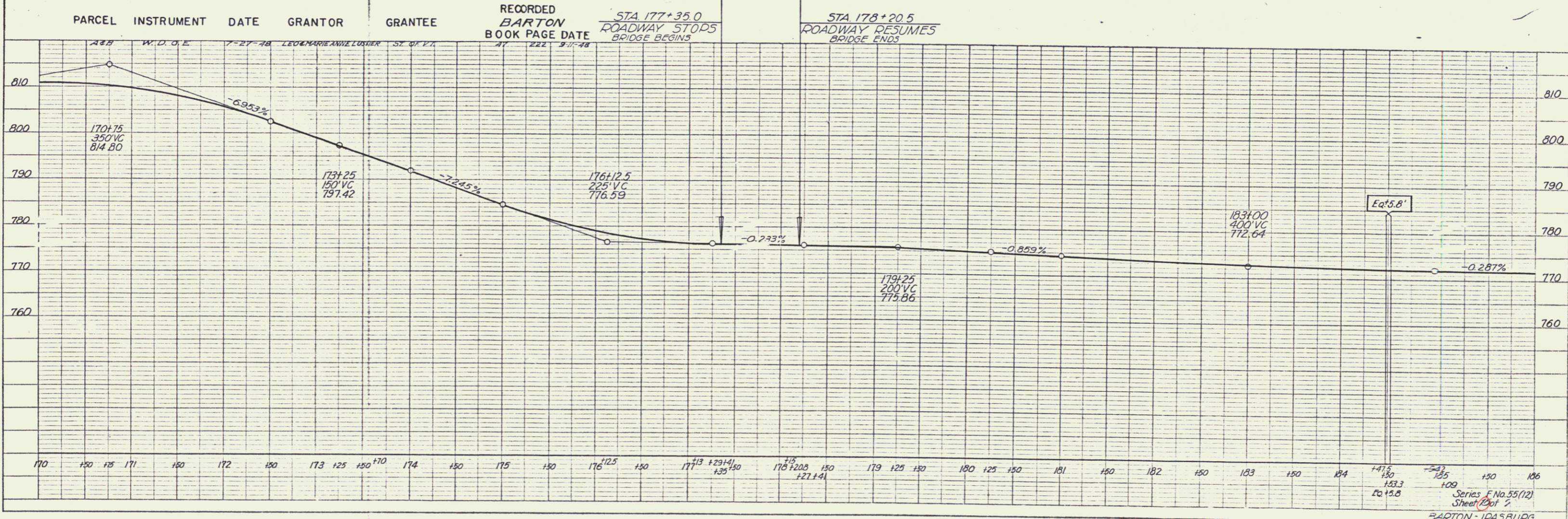
BARTON-KRASBURG
Series E, No. 55 (12)
Sheet 18 of 27 sheets

POST WAR F A PRIMARY

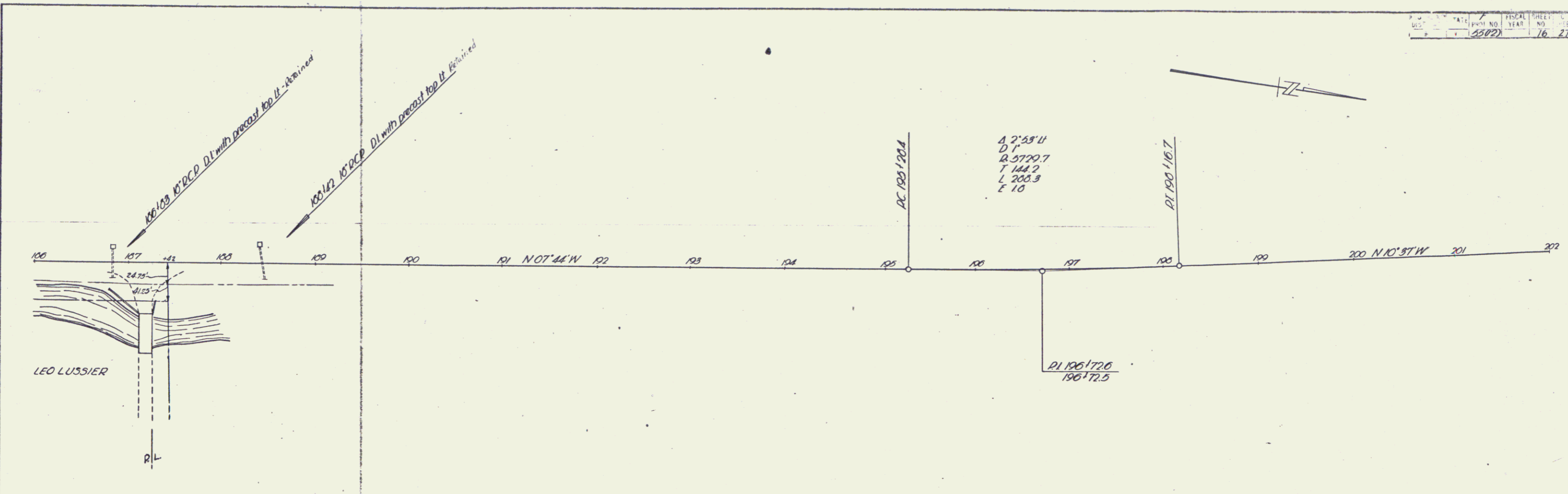
PLAN
 DIVISION
 ALBANY COUNTY
 NOTE BOOK
 NO.



PROFILE
 DIVISION
 ALBANY COUNTY
 NOTE BOOK
 NO.



PLAN
 DRAWN BY: [blank]
 CHECKED BY: [blank]
 DATE: 7/20/27



PROFILE
 DRAWN BY: [blank]
 CHECKED BY: [blank]
 DATE: 7/20/27

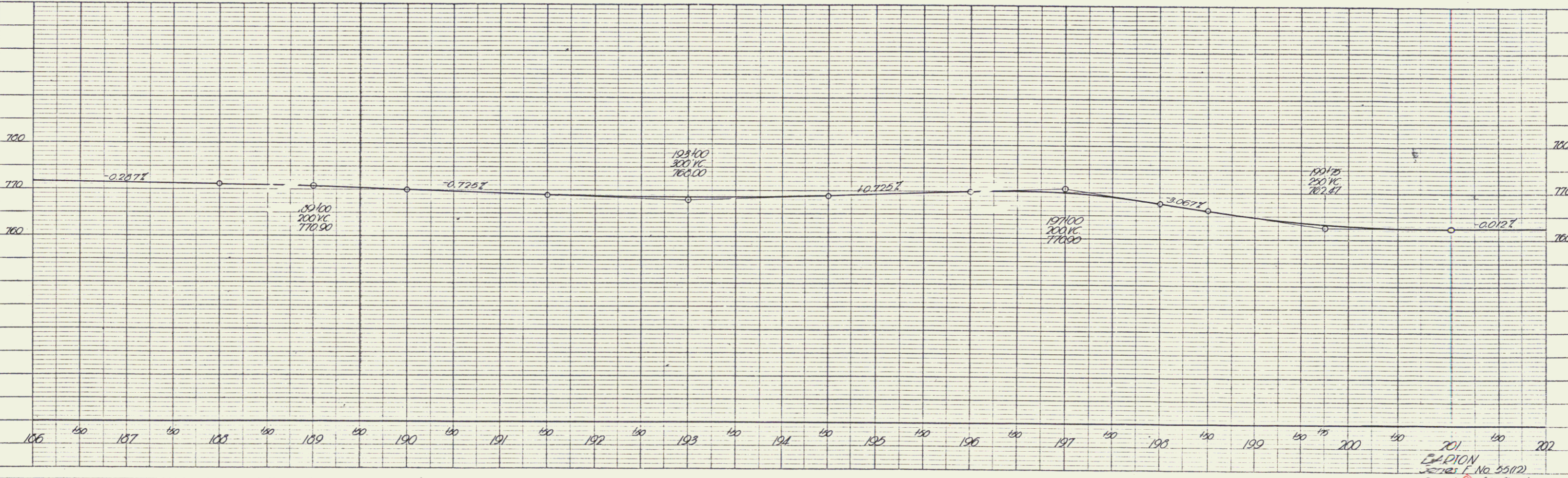


PLATE 1 - PLAN PROFILE OF R.R. & E. STADIUM
 H. & E. CO. NO. 248-1C

SECTION
 Series F No. 55(12)
 Sheet 16 of 27 Sheets

PLAN	DATE	BY
DESIGNED		
PLOTTED		
CHECKED		
NO. OF WY CHECKED		
NO.		

PROFILE	DATE	BY
DESIGNED		
PLOTTED		
CHECKED		
NO. OF WY CHECKED		
NO.		

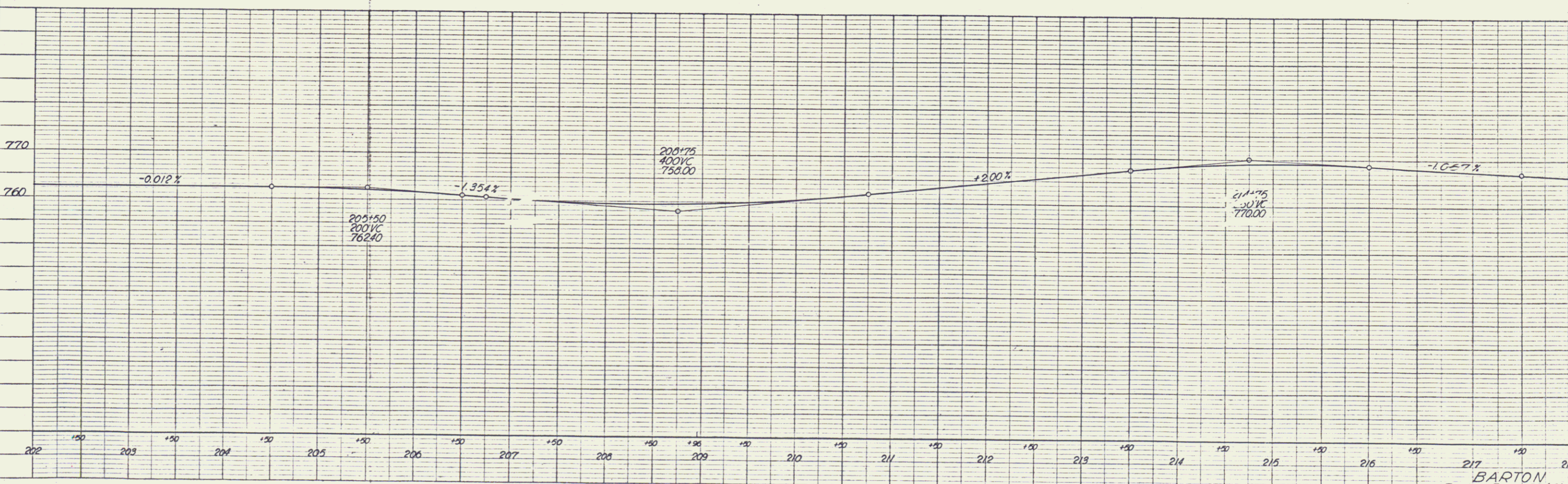
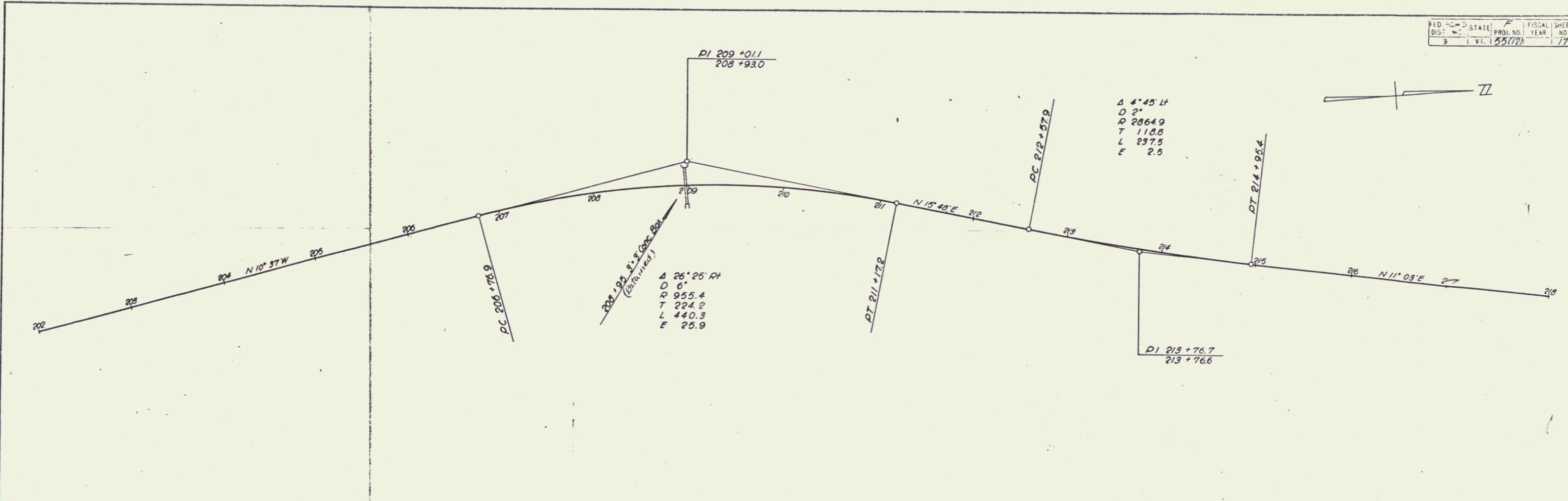


PLATE 1 - PLAN-PROFILE OF R.R. & C. STANDARDS
 KEUFFEL & ESSER CO., NEW YORK.

K & E Co. No. 388-C
 MADE IN U.S.A.

BARTON
 Series F no. 55(12)
 Sheet (17) of 27 sheets

15

PLAN
 DRAWN BY
 CHECKED BY
 DATE

PROFILE
 DRAWN BY
 CHECKED BY
 DATE

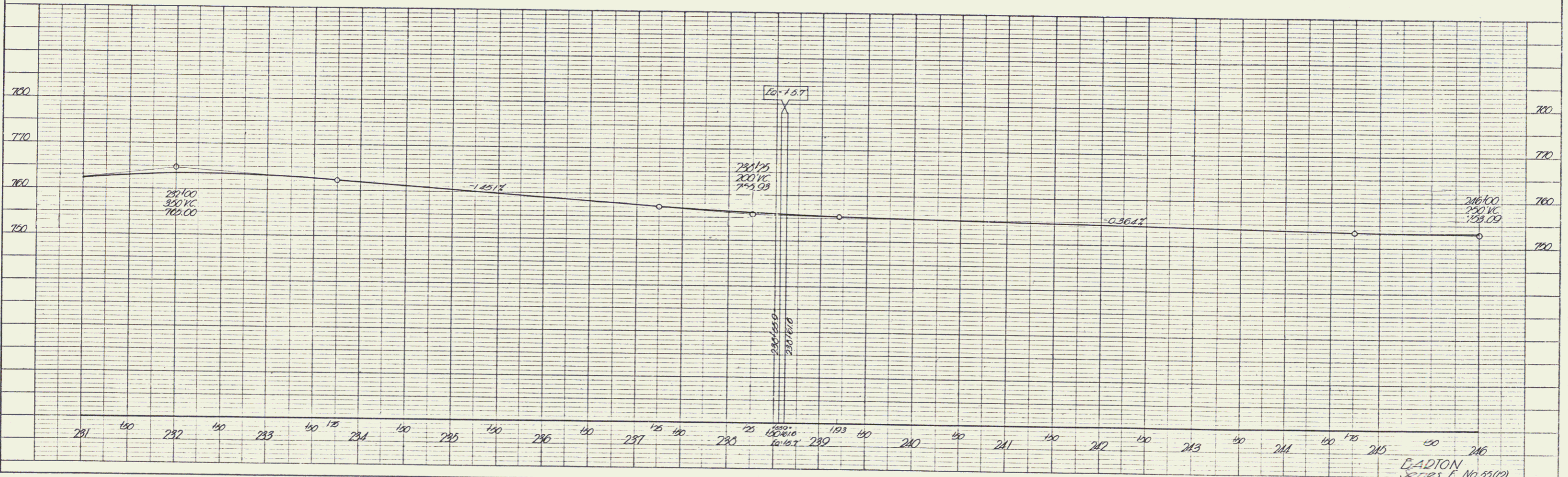
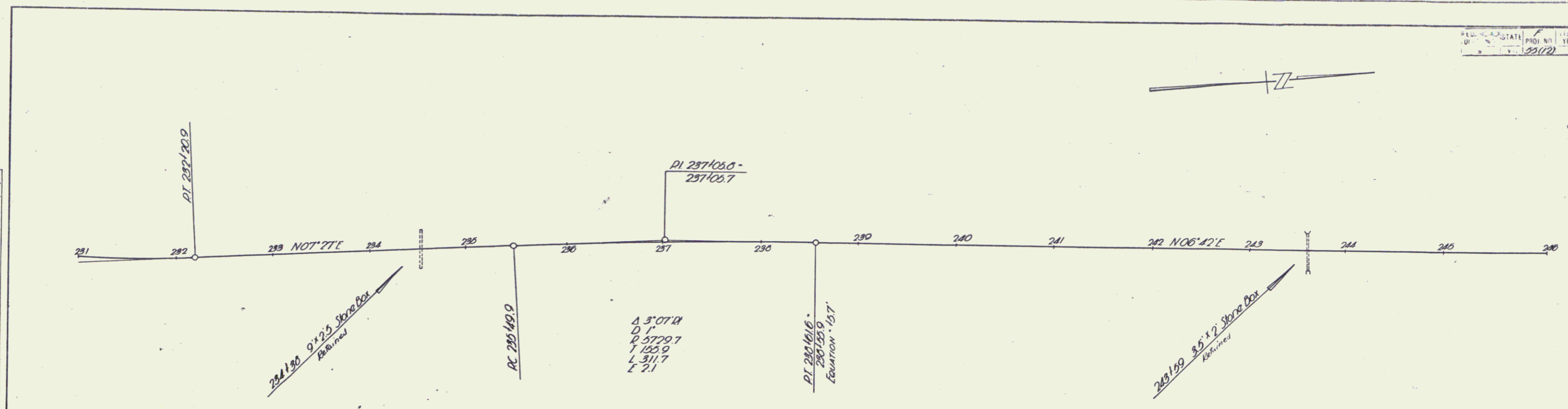


PLATE 1-PLAN-PROFILE O.P.A.E. STANDARD
 K & E CO. NO. 248-B-C

EADTON
 Series F, No 55172
 Sheet 17 of 27 Sheets

PLANNING	STATE	F	FISCAL YEAR	20	SHEET NO.	27	TOTAL SHEETS	12
VI.	35(12)							

PLAN	REVISED	DATE
NOTE BOOK	ALIGNED	
NO.	OF WAY CHECKED	
		CHG.

PROFILE	REVISED	DATE
NOTE BOOK	GRADES CHECKED	
NO.	STRUCTURE NOTED BY CIVIL	

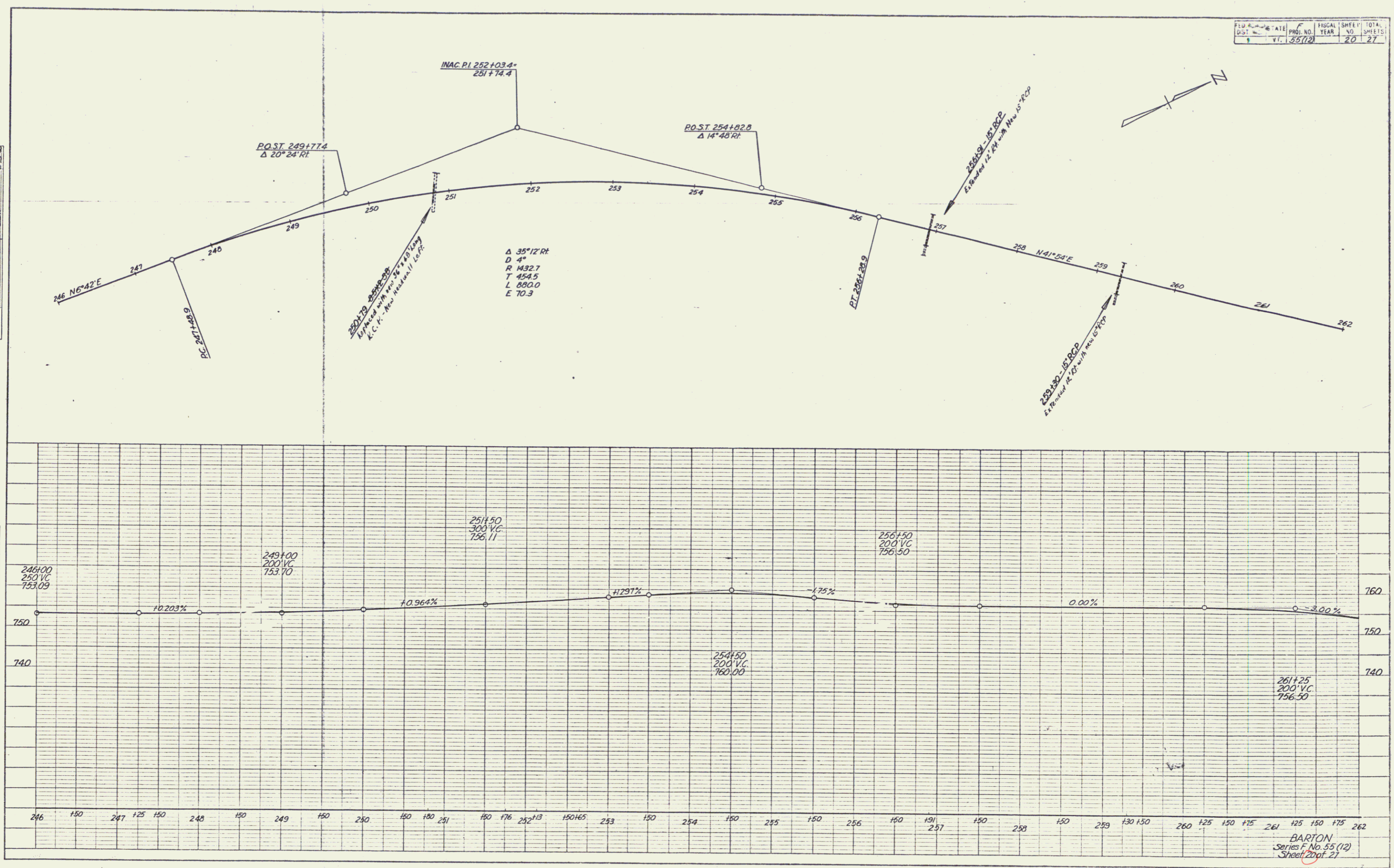
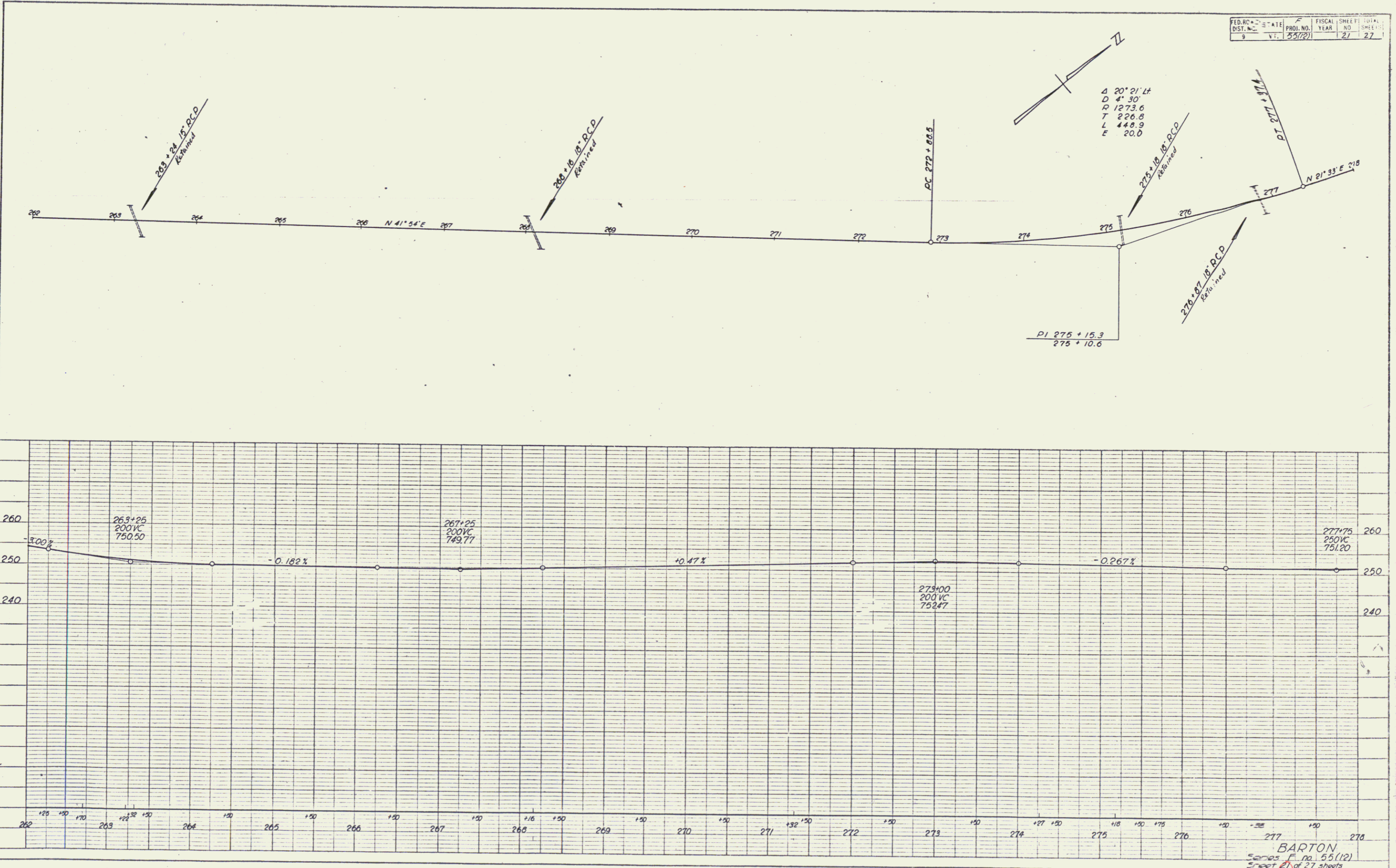


PLATE 1 - PLAN PROFILE S.P. & S.E. STANDARD
 KELP & ESSER CO., NEW YORK
 N. E. & CO. INC. 348-11 C
 NEW YORK, N. Y.

BARTON
 Series F No. 55 (12)
 Sheet 20 of 27

PLAN
 DATE: 3/18
 DRAWN BY: [Signature]
 CHECKED BY: [Signature]
 NO. 1200

PROFILE
 DATE: [Blank]
 DRAWN BY: [Blank]
 CHECKED BY: [Blank]
 NO. [Blank]



Δ 20° 21' Lt
 D 4' 30"
 R 1273.6
 T 226.8
 L 448.9
 E 20.0

FED. ROAD DIST. NO.	STATE	PROJECT YEAR	FISCAL YEAR	SHEET NO.	TOTAL SHEETS
9	VT.	53(6)		22	27

PLAN	DATE
REVISED	
NOTED	
NOTICE	
NO.	

PROFILE	DATE
REVISED	
NOTED	
NOTICE	
NO.	

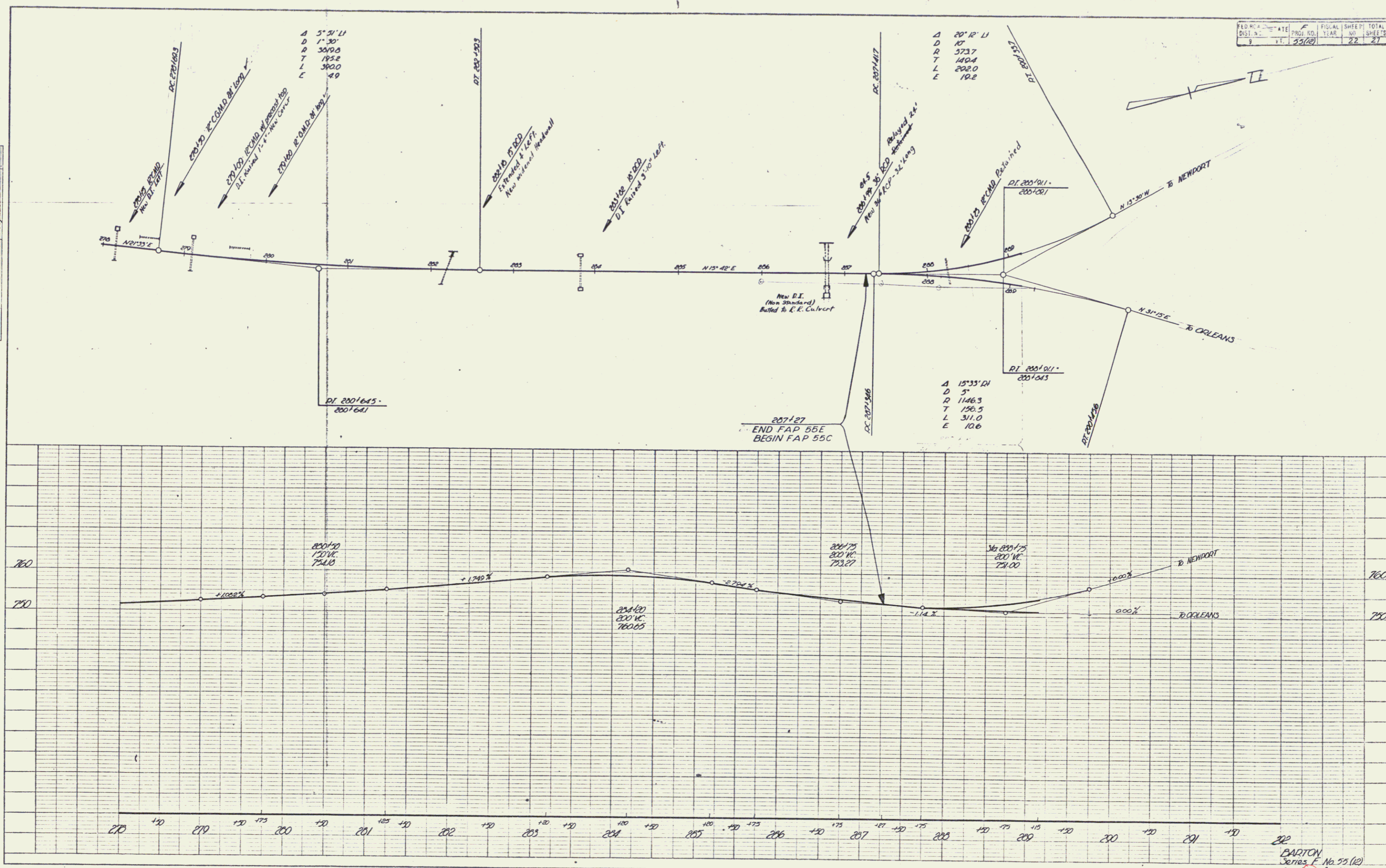


PLATE 1 - PLAN-PROFILE OF P. & A. L. STATION
 REUFEL & EISEN CO. NEW YORK
 N. E. CO. NO. 34810
 GENERAL CONTRACTORS

BARTON
 Series E No. 75 (12)
 Sheet 22 of 27 Sheets

20