

NEW DROP INLETS REQUIRED

| STATION | L or R | CONC R | STEEL GRATES |
|---------|--------|--------|--------------|
| 46+05 | R | 1.1 | 33 |
| 52+70 | L | 1.1 | 33 |
| 57+20 | L | 1.4 | 33 |

NEW CATCH BASINS REQUIRED

| STATION | LEFT | RIGHT |
|---------|------|-------|
| 49+70 | | |
| 52+05 | | |
| 51+00 | | |
| 53+05 | | |
| 54+41 | | |
| 56+62 | | |
| 57+10 | | |
| 59+10 | | |
| 59+33 | | |
| 56+43 | | |

NEW REIN. CONC PIPE CULVERTS REQUIRED

| STATION TO STATION | SIZE | LENGTH |
|--------------------|------|--------|
| 46+05 | 12" | 8' |
| 49+70R | 15" | 36' |
| 51+80R | 12" | 40' |
| 54+41R | 12" | 32' |
| 56+43R | 12" | 32' |
| 52+04L | 12" | 104' |
| 53+89 | 12" | 272' |
| 56+62 | 12" | 248' |
| 59+10 | 12" | 90' |

NEW CONC CURB AND GUTTER REQUIRED

| STATIONS | L or R | HEIGHT | LENG CONC R STEEL |
|-------------|--------|--------|----------------------|
| 46+00-47+30 | R | 6" | 200 2.8 10.4 180 lbs |
| 53+30-46+00 | R | 6" | 10' 0.6 - 8 - |
| 70+00-40+00 | L | 6" | 200 1.3 - 150 - |
| 48+20-48+40 | R | 6" | 67' 4.3 30 - |

NEW CONCRETE GUTTER REQUIRED

| STATIONS | L or R | LENGTH | WIDTH | CONC R STEEL |
|-------------|--------|--------|-------|-----------------|
| 54+70-57+10 | R | 240' | 20" | 10.4 Cy 180 lbs |
| 57+40-59+40 | R | 200' | 20" | 8.6 - 150 - |
| 59+70-53+30 | R | 20' | 20" | 0.9 - 15 - |
| 47+50-47+90 | R | 20' | 20" | 2.0 53 |
| 49+50-54+70 | R | 320' | 3.5" | 202 44 yds |

ONE COURSE CEMENT CONCRETE SIDEWALK REQUIRED

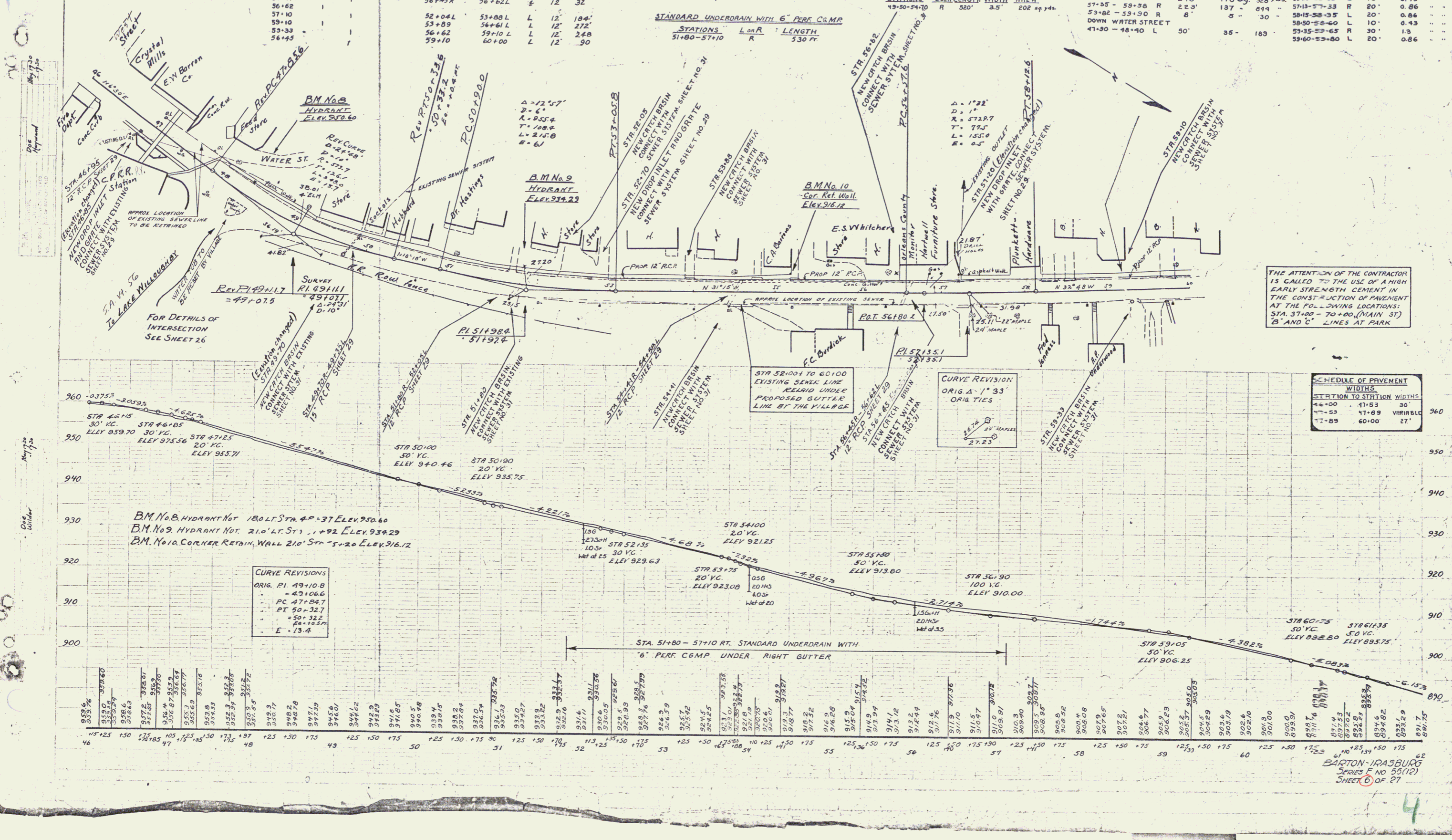
| STATIONS | L or R | LENGTH | WIDTH | CONC |
|-------------|--------|--------|-------|------------|
| 48+00-40+00 | L | 12 00 | 5' | 467 24 Yds |

NEW CONCRETE RETAINING WALL REQUIRED

| STATION TO STATION | LENGTH | CONC R STEEL |
|--------------------|---------|-----------------|
| 54+70 - 57+15 | R 245' | 178 6.4 328 162 |
| 57+55 - 59+58 | R 2.23' | 137 - 814 - |
| 59+82 - 59+90 | R 8' | 5 - 30 - |
| 47+80 - 48+40 | L 50' | 35 - 183 - |

NEW CONCRETE RETAINING WALL REQUIRED

| STATION TO STATION | LENGTH | CONC R STEEL |
|--------------------|---------|-----------------|
| 54+70 - 57+15 | R 245' | 178 6.4 328 162 |
| 57+55 - 59+58 | R 2.23' | 137 - 814 - |
| 59+82 - 59+90 | R 8' | 5 - 30 - |
| 47+80 - 48+40 | L 50' | 35 - 183 - |



CURVE REVISIONS
 ORIG. PI 49+10.8
 = 49+10.66
 PC 47+04.7
 PT 50+32.7
 = 50+32.2
 EA 10.3m
 E = 13.4

SCHEDULE OF PAVEMENT WIDTHS

| STATION TO STATION | WIDTHS |
|--------------------|----------|
| 44+00 - 47+53 | 30 |
| 47+53 - 47+89 | VARIABLE |
| 47+89 - 60+00 | 27 |