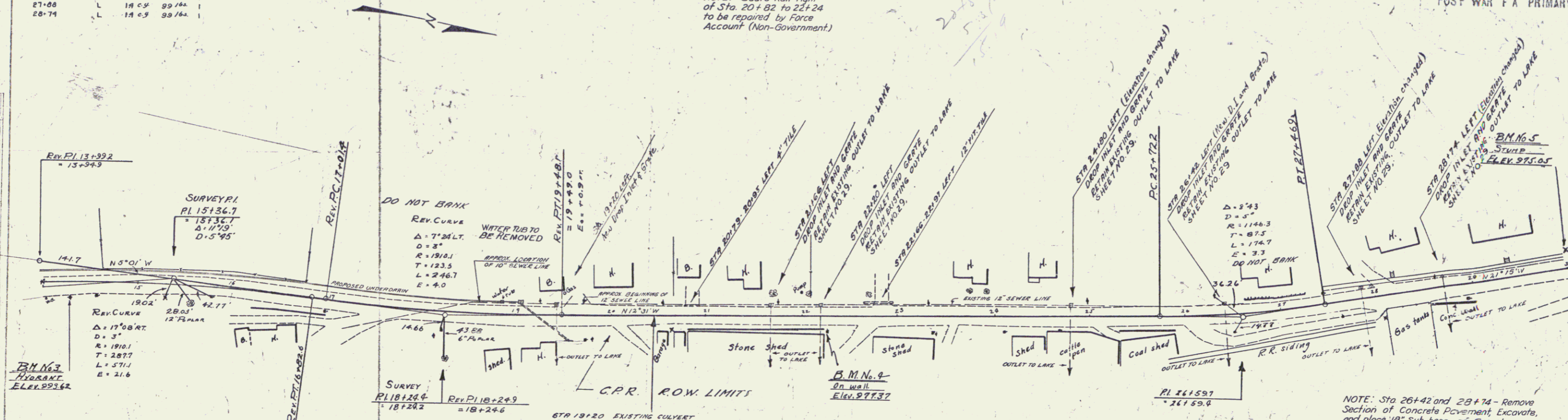


NEW DROP INLETS WITH GRATES REQUIRED

STATION	L-R	CONC.	STEEL GRATES
21+66	L	14 C 5	39 1/4 x 1
22+20	L	14 C 5	39 1/4 x 1
24+00	L	14 C 5	39 1/4 x 1
26+42	L	14 C 5	39 1/4 x 1
27+08	L	14 C 5	39 1/4 x 1
28+74	L	14 C 5	39 1/4 x 1

POST WAR F A PRIMARY
55(12) 4 27

NOTE: Guard Rail right of Sta 20+82 to 22+24 to be repaired by Force Account (Non-Government)

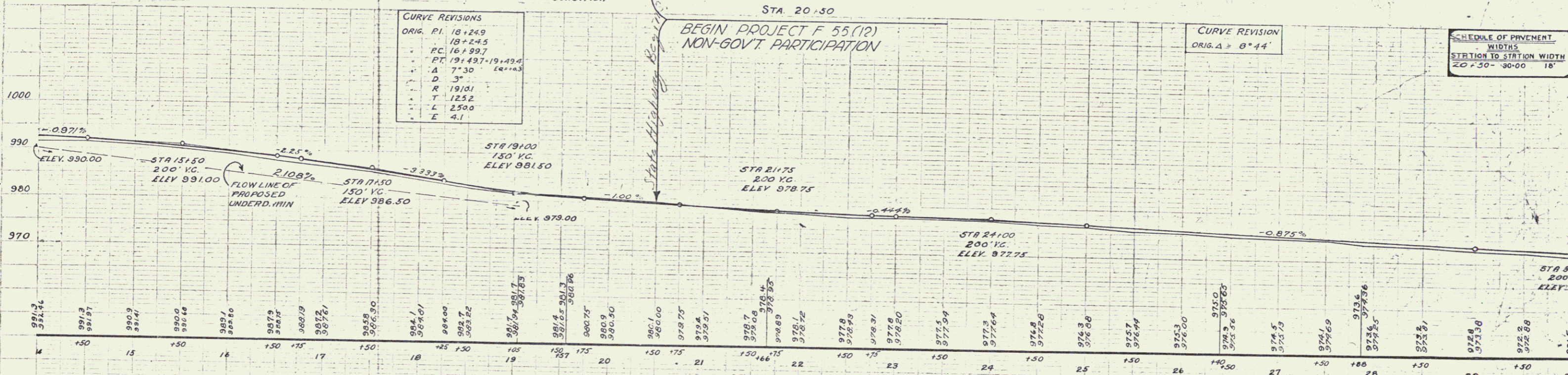


CURVE REVISIONS

ORIG. P.I.	REV. P.I.
18+24.9	18+24.5
16+99.7	16+99.7
19+49.7-19+49.4	19+49.7-19+49.4
Δ	7°30' (40°+14)
D	3'
R	191.01
T	125.2
L	250.0
E	4.1

CURVE REVISION
ORIG. Δ = 8°44'

SCHEDULE OF PAVEMENT
WIDTHS
STATION TO STATION WIDTH
20+50-30+00 18'



BM No. 3 HYDRANT NGT, 13.0' RT. STA. 14+27 ELEV. 993.62
 BM No. 4 CORNER CONC. RETAIN. WALL, 13.5' RT. STA. 22+24 ELEV. 977.37
 BM No. 5 SPIKE IN ROOT #1 STUMP, 20.0' RT. STA. 30+00 ELEV. 975.05