

**WOOD GUARD RAIL REQUIRED**

STATION	LT	RT
263+21	26'	28'
268+08	24'	26'
273+18	24'	—
276+87	24'	—

**CASTLE GUARD RAIL REQUIRED**

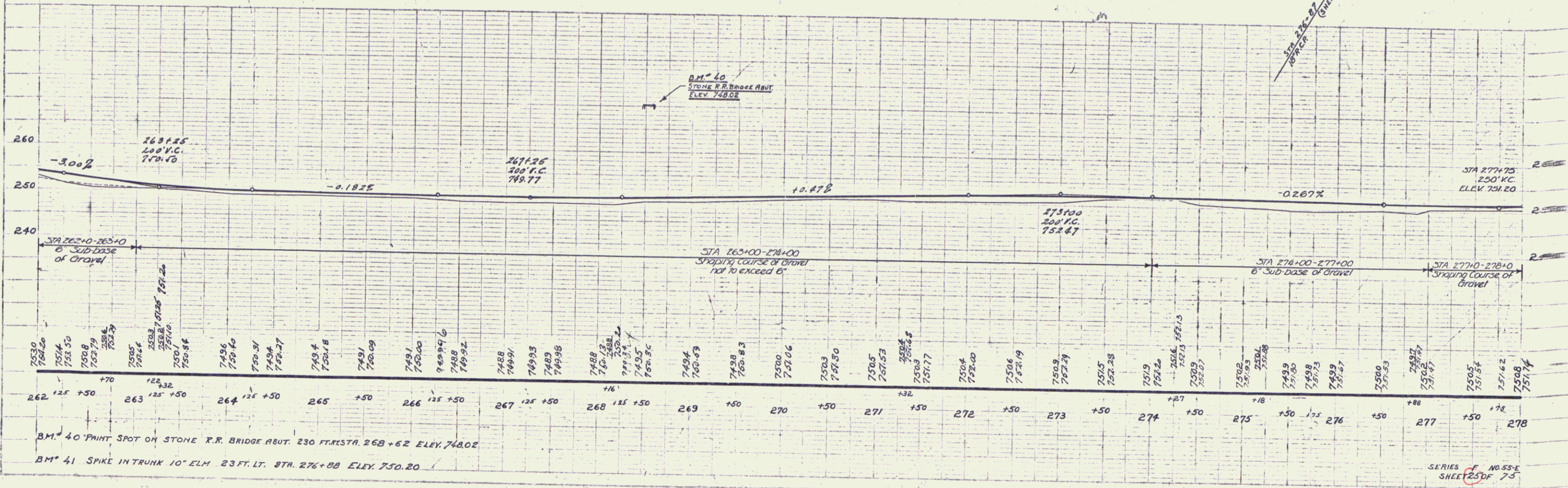
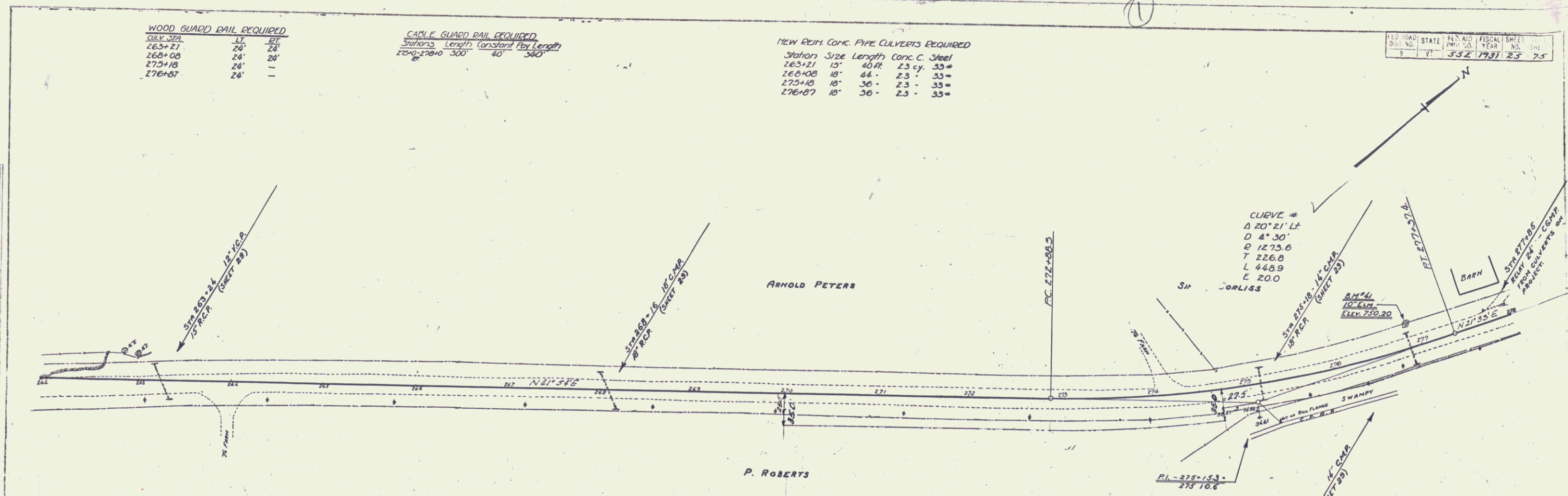
Stations	Length	Constant	Post Length
270-276+10	300'	40'	360'

**NEW REIN. CONC. PIPE CULVERTS REQUIRED**

Station	Size	Length	Conc. C.	Steel
263+21	18"	40 ft.	2.3 cu.	33#
268+08	18"	44'	2.3	33#
275+18	18"	36'	2.3	33#
276+87	18"	36'	2.3	33#

FED. ROAD DIST. NO. STATE PROJ. NO. FISCAL YEAR SHEET NO. SHEET TOTAL

3 1 7 352 1981 25 75



BM\* 40 PAINT SPOT ON STONE R.R. BRIDGE ABUT. 230 FT. STA. 268+62 ELEV. 748.02

BM\* 41 SPIKE IN TRUNK 10\"/>

SERIES F NO. 55-E SHEET 23 OF 75