

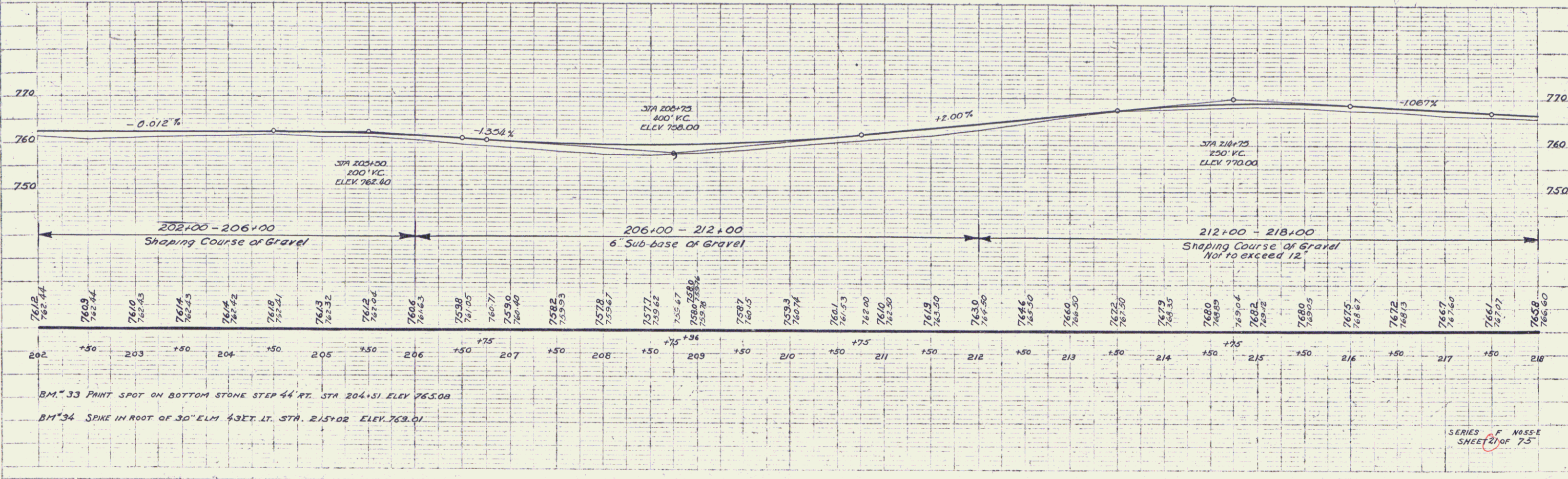
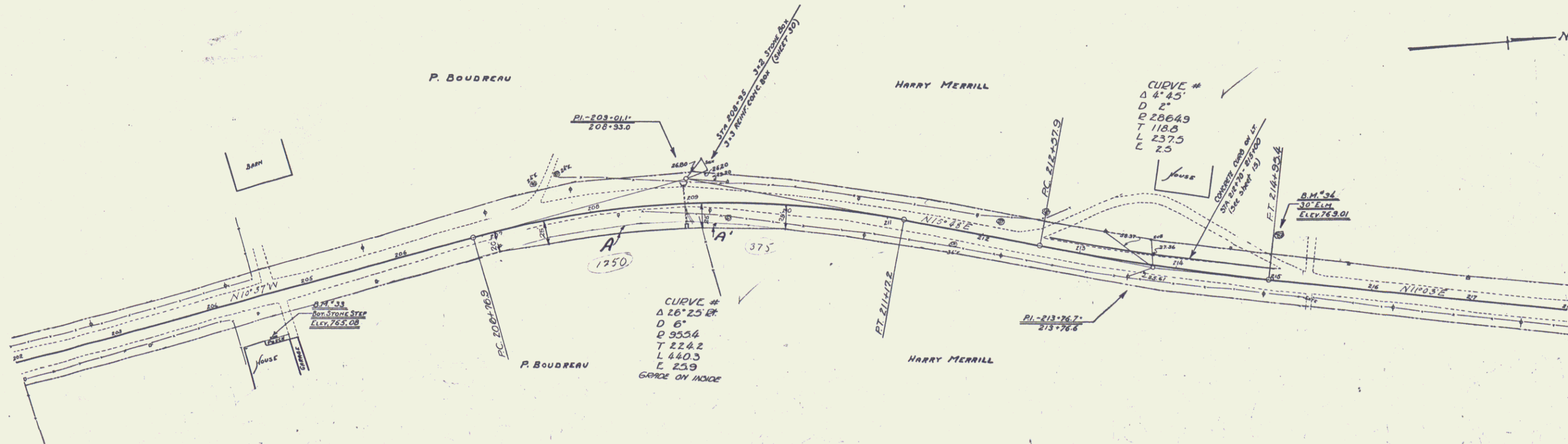
WOOD GUARD RAIL REQUIRED		
CULY STA.	LT.	RT.
208+95	24'	24'

Parcel	Kind of Instrument	Date of Instrument	Grantor	Grantee	Recorded Book	Recorded Date	Remarks
A	G.C.D.	8-25-31	E.R. Boudreau	Stof Yt.	AD 755	8-31-31	
A	"	8-25-31	H.E. & L. Merrill	"	AD 755	8-31-31	

NEW BEST CONC. BOX CULVERTS REQUIRED		
Station	Size	Conc. A Steel
208+95	3x3	18.2 cy 1262#

CONCRETE CURB REQUIRED			
STA. TO STA.	LENG.	CONC. A. STEEL	
212+70 - 215+00	LT. 230'	2.6 cu	231 lbs.

FED. ROAD DIST. NO.	STATE	FED. AID FISCAL YEAR	SHEET NO.	TOTAL SHEETS
4	VT.	65-E 1931	21	75



BM #33 PAINT SPOT ON BOTTOM STONE STEP 44 FT. STA. 204+51 ELEV. 765.08
 BM #34 SPIKE IN ROOT OF 30' ELM 43 FT. LT. STA. 215+02 ELEV. 763.01

SERIES 65-E
 SHEET 21 OF 75

117