

WOOD GUARD RAIL REQUIRED

Culv. Station	Lt.	Rt.
186+83	-	26'
188+42	24'	26'

WOOD GUIDE POSTS REQUIRED

Culv. Station	Lt.	Rt.
186+83	1	-

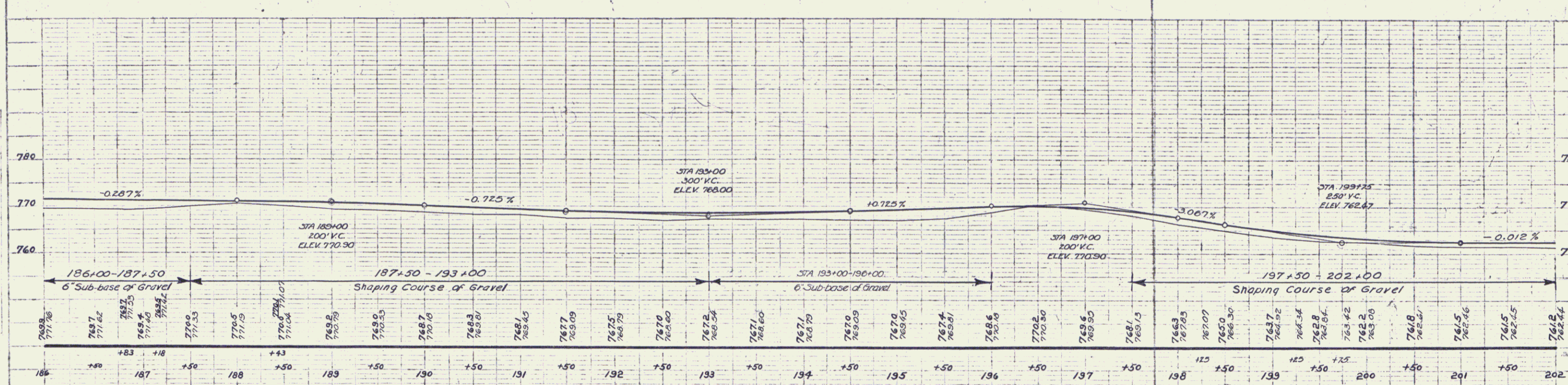
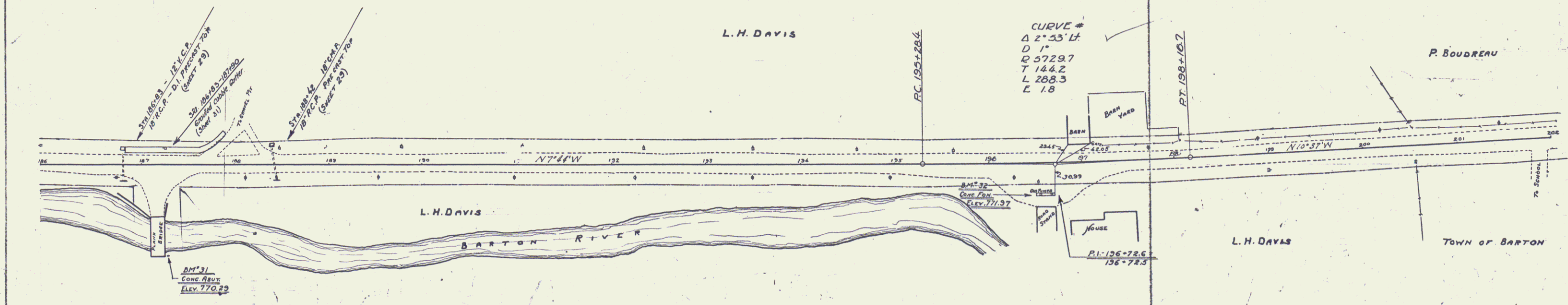
New Rein. Conc. Pipe Culverts Required

Station	Size	Length	Conc.	A	Conc. C	Steel
186+83	18"	32' R	2.0 cy	15 cy	17#	17#
188+42	18"	36"	1.5	15	17#	17#

Grouted Cobble Gutter Required

Sta.	Length	Width	Area
186+83 - 187+90	107'	3' 0"	72 sq. yds.

FED. ROAD DIST. NO.	STATE	PROJECT NO.	FISCAL YEAR	SHEET NO.	TOTAL SHEETS
9	55-E	1937	20	75	



BM # 31 PAINT SPOT ON CONC. ABUT. OF WOOD BRIDGE 99 FT. RT. STA 187+25 ELEV. 770.29  
 BM # 32 PAINT SPOT ON CONC. GAS PUMP FOUNDATION 32 FT. RT. STA 196+51 ELEV. 771.37

SERIES F NO-55E  
 SHEET 20 OF 75