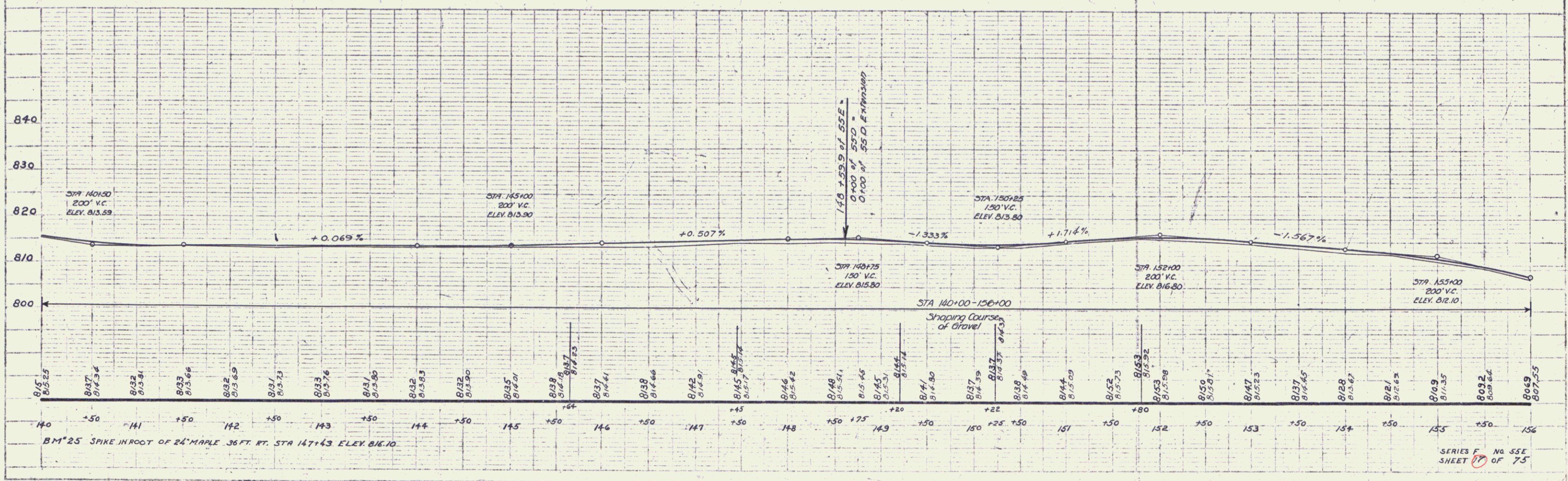
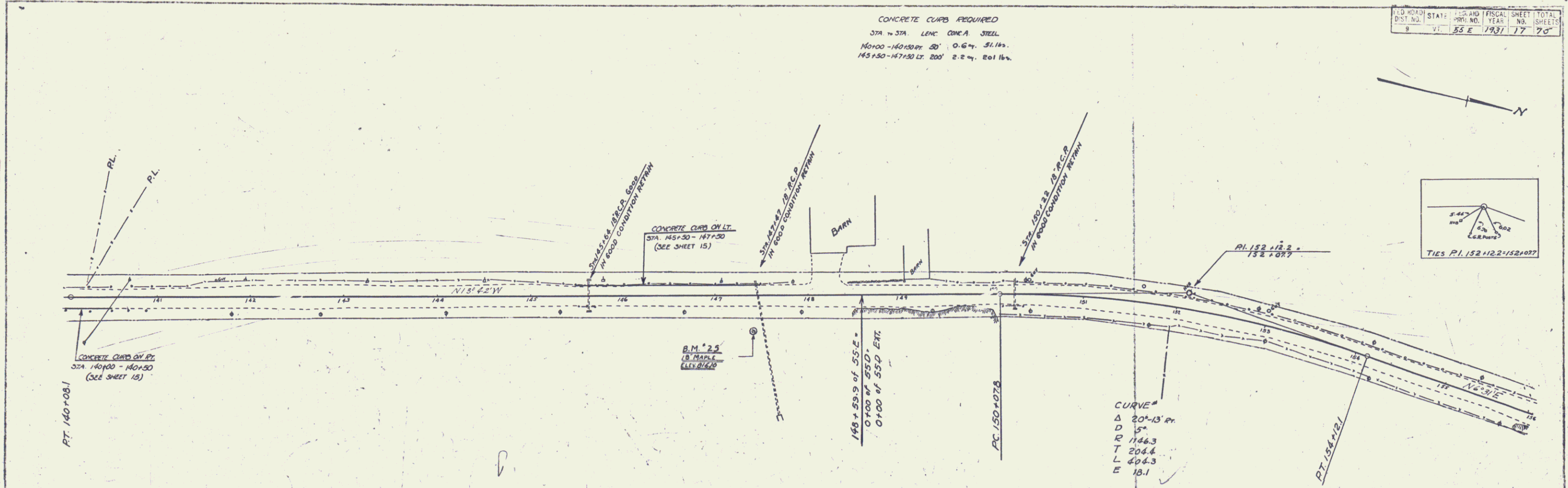


|           |       |             |           |              |
|-----------|-------|-------------|-----------|--------------|
| PROJ. NO. | STATE | FISCAL YEAR | SHEET NO. | TOTAL SHEETS |
| 55 E      | VI    | 1937        | 17        | 75           |

CONCRETE CURBS REQUIRED  
 STA 140+00 TO STA 147+00  
 140+00-141+00 20' 0.6% 31.14'  
 145+50-147+00 20' 2.2% 20.14'



|    |    |
|----|----|
| PL | PL |
|----|----|

|         |        |
|---------|--------|
| B.M. 25 | 813.15 |
| B.M. 36 | 813.36 |
| B.M. 31 | 813.31 |
| B.M. 36 | 813.66 |
| B.M. 29 | 813.69 |
| B.M. 23 | 813.73 |
| B.M. 26 | 813.76 |
| B.M. 25 | 813.80 |
| B.M. 23 | 813.83 |
| B.M. 22 | 813.80 |
| B.M. 25 | 813.81 |
| B.M. 28 | 813.86 |
| B.M. 27 | 813.87 |
| B.M. 41 | 814.41 |
| B.M. 38 | 814.46 |
| B.M. 42 | 814.51 |
| B.M. 45 | 814.51 |
| B.M. 44 | 814.80 |
| B.M. 37 | 814.59 |
| B.M. 37 | 814.57 |
| B.M. 38 | 814.49 |
| B.M. 44 | 815.09 |
| B.M. 52 | 815.73 |
| B.M. 53 | 815.92 |
| B.M. 50 | 815.91 |
| B.M. 47 | 815.23 |
| B.M. 37 | 814.45 |
| B.M. 28 | 815.67 |
| B.M. 21 | 815.62 |
| B.M. 09 | 811.35 |
| B.M. 02 | 808.64 |
| B.M. 09 | 807.35 |

SERIES F No. 55E  
 SHEET 17 OF 75