

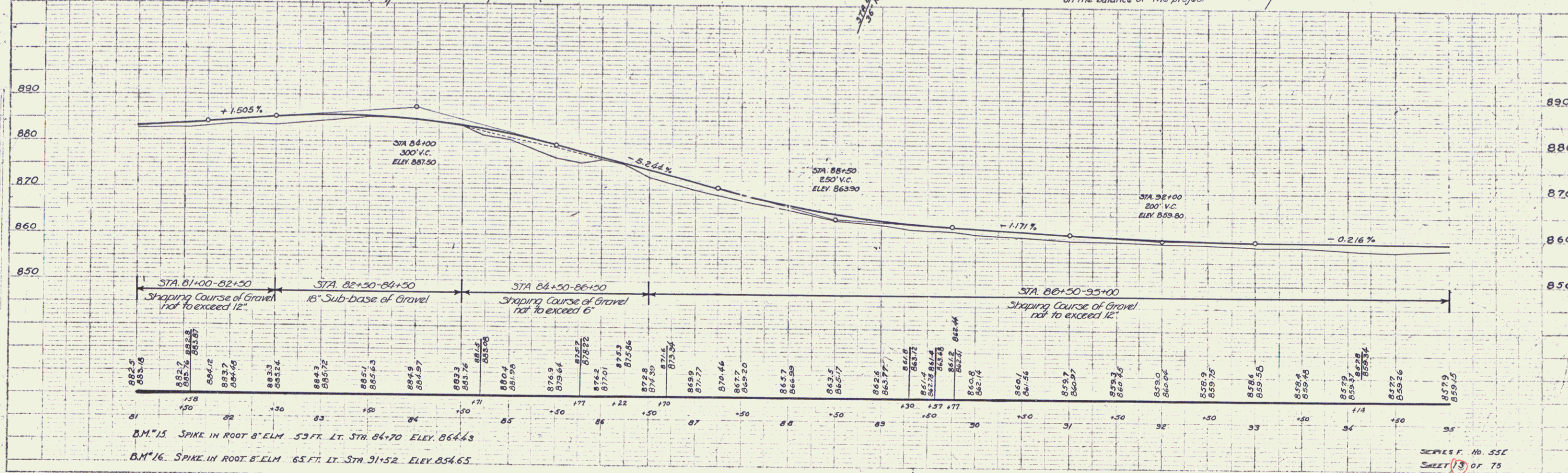
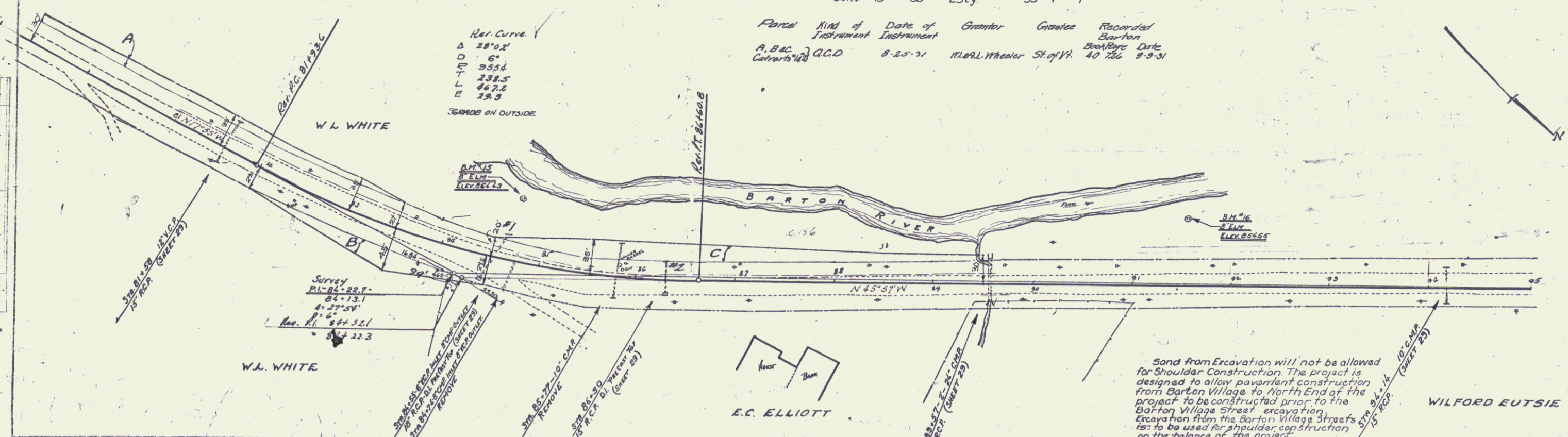
WOOD GUARD POSTS REQUIRED			WOOD GUARD RAIL REQUIRED		
STA.	LT.	FT.	CULV. STA.	LT.	FT.
84+85	-	1	81+58	-	24'
			84+30	-	24'
			85+57	-	24'
			94+14	24'	24'

CABLE GUARD RAIL REQUIRED				
STATION	LENG.	CONSTANT	PAY LENG.	
81+00-89+80 LT.	800'	80'	960'	

NEW REIN CONC PIPE CULVERTS REQUIRED						
Sta	Size	Length	Conc.	Conc. A	Steel	DI
81+58	15"	48'	2.3 cy	-	33#	-
84+30	18"	52'	1.5	1.5 cy	174#	1
86+30	15"	32'	1.5	1.5 cy	174#	1
89+57	36"	44'	-	40	35#	1
94+14	15"	36'	2.3 cy	-	33#	1

FED. DIST. NO.	STATE	FED. AID PROJ. NO.	FISCAL YEAR	SHEET NO.	TOTAL SHEETS
9	4	55-C	1951	73	75

Parcel Kind of Date of Grantor Grantee Recorded
 Instrument Instrument
 A, B, C, D, E, F, G, H, I, J, K, L, M, N, O, P, Q, R, S, T, U, V, W, X, Y, Z
 Q.C.D. 8-25-51 M.L.W. Wheeler St of W. 40 786 8-9-51



B.M. 15. SPIKE IN ROOT 8" ELM. 53 FT. LT. STA. 84+70 ELEV. 864.43
 B.M. 16. SPIKE IN ROOT 8" ELM. 65 FT. LT. STA. 91+52 ELEV. 854.65

7