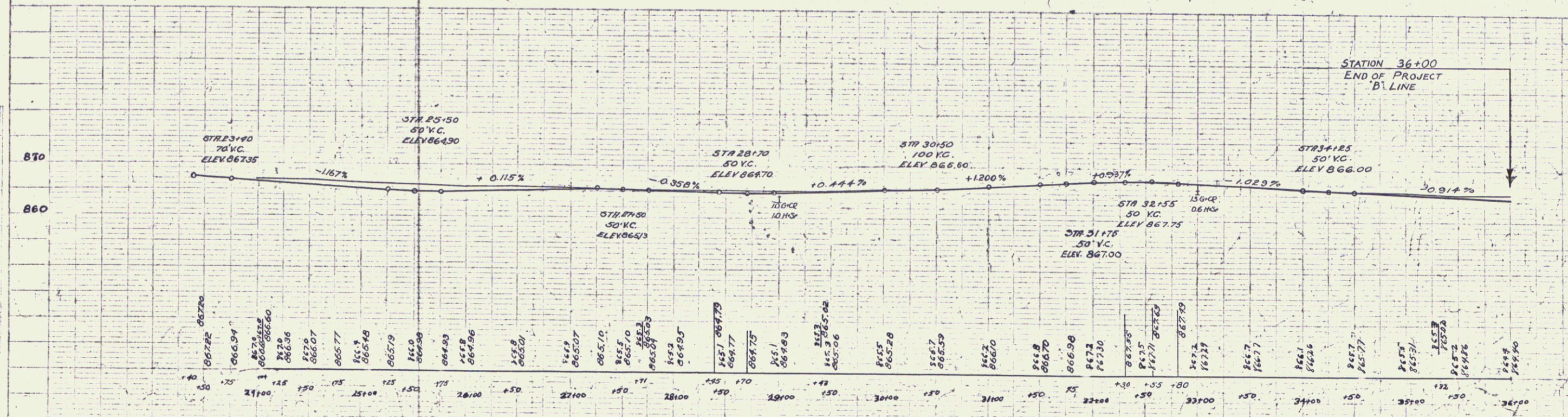
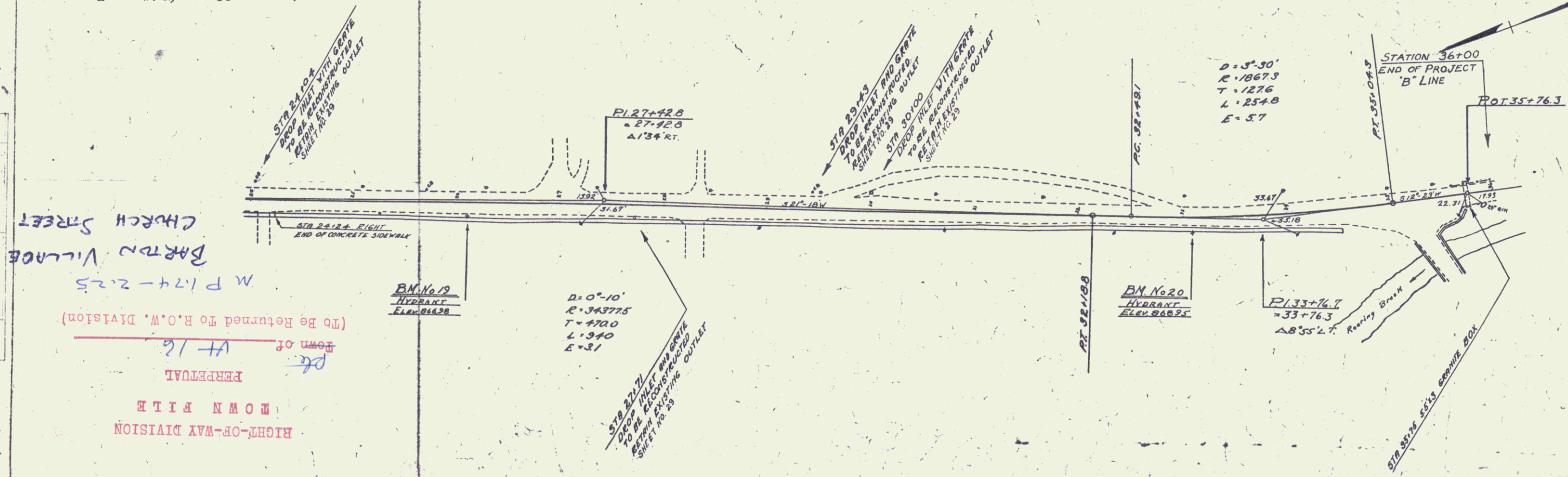


NEW DROP INLET WITH GUTTER REQUIRED

| STATION | Len | CONC   | REIN. STEEL | GRATES |
|---------|-----|--------|-------------|--------|
| 24+04   | L   | 1.4 cy | 93 lb       | 1      |
| 27+19   | R   | 1.4 cy | 93 lb       | 1      |
| 29+43   | L   | 1.4 cy | 93 lb       | 1      |
| 30+00   | L   | 1.4 cy | 93 lb       | 1      |

SPECIAL CONCRETE GUTTER REQUIRED  
 STA. TO STA. LEN. CONC. STEEL  
 24+00-31+50 R 750 32 cy 563'

FED. ROAD DIST. STATE 55 E 1931 12 75



BM No 19 HYDRANT NUT 130' RT. STA. 26+10. ELEV. 866.38  
 BM No 20 HYDRANT NUT 170' RT. STA. 33+09. ELEV. 868.95

CHURCH STREET  
 SERIES F, No 55E  
 BARTON VILLAGE  
 SHEET 100-75

6