

ONE COURSE CEMENT CONCRETE SIDEWALK REQUIRED				
STATION TO STATION	L & R	WIDTH	LENGTH	AREA
12100 - 12150	L	5'-0"	50'	278 sq yds
12100 - 12150	R	5'-0"	50'	278 "

(SEE SHEET 32)

NEW CONCRETE CURB AND GUTTER REQUIRED				
STATION - STATION	L & R	SURROUND	LENGTH	CONC. R. REIN. STEEL
17100 - 23175	L	6"	675'	43.0 cu yds 506 lbs

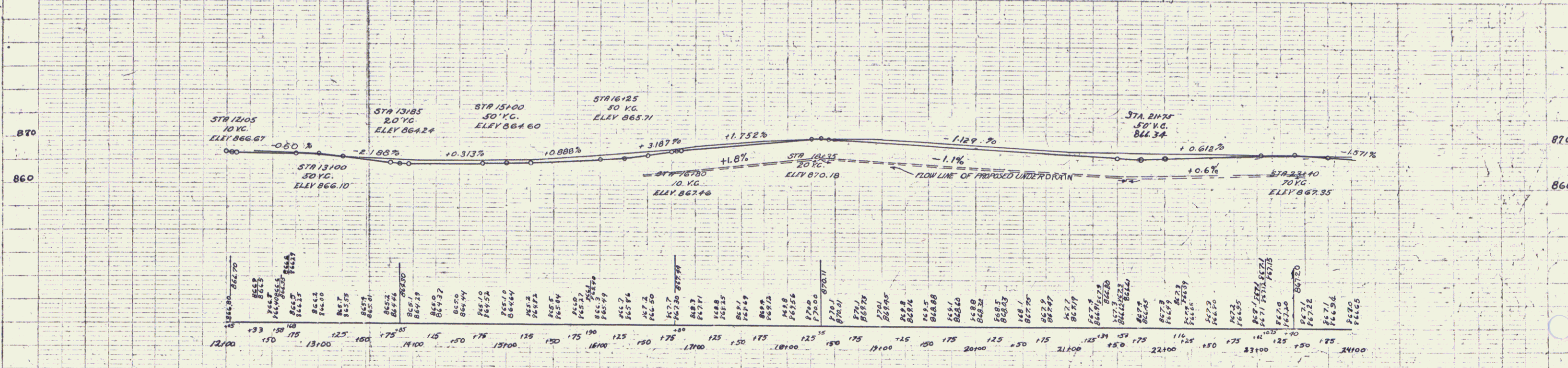
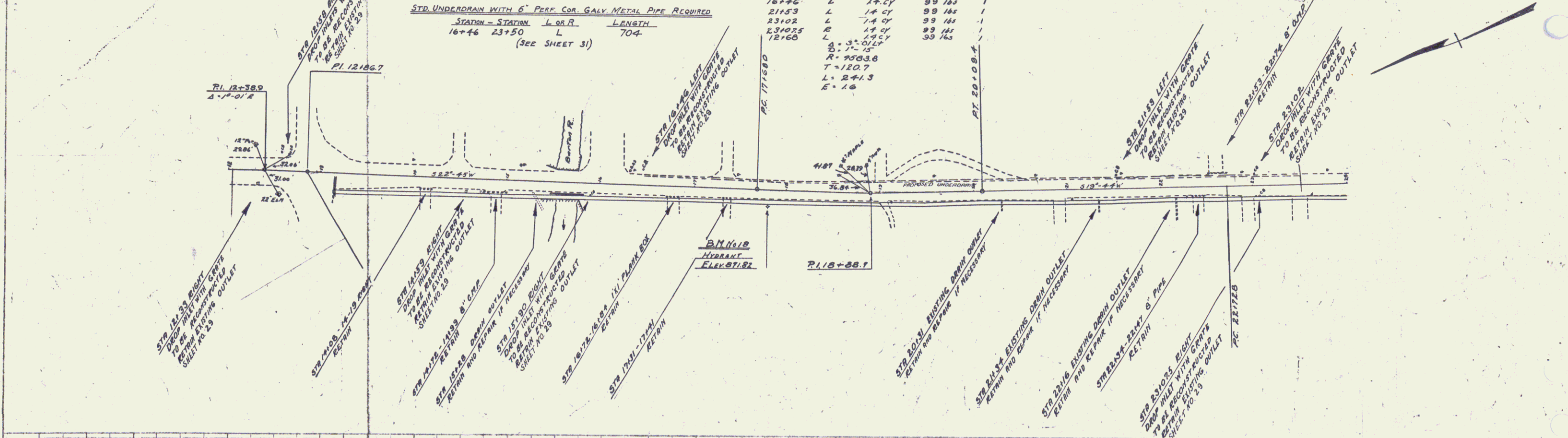
(SEE SHEET 32)

NEW DROP INLETS WITH GRATES REQUIRED				
STATION	L & R	CONC. R.	REIN. STEEL	GRATE
12133	R	14 CY	99 lbs	
12158	L	14 CY	99 lbs	
14153	R	14 CY	99 lbs	
15190	R	14 CY	99 lbs	
18146	L	14 CY	99 lbs	
21153	L	14 CY	99 lbs	
23102	R	14 CY	99 lbs	
231025	L	14 CY	99 lbs	
23165	L	14 CY	99 lbs	

A - 3" O.D.L.
 B - 12" x 12"
 R - 9503.8
 T - 120.7
 L - 241.3
 E - 1.0

SPECIAL CONC. GUTTER REQUIRED				
STA. TO STA.	LOWR LAMP	CONC. A	STEEL	
15190-24100	R	26"	26"	607'

SHEET NO. 55E 1931 11
 DATE 11/11/75



BM No 18 HYDRANT NUT 160' RT. STA. 17+01 ELEV. 871.82

CHURCH STREET
 SERIES F No 55E
 BARTON VILLAGE
 SHEET 11 OF 75