

NEW CONCRETE CURB AND GUTTER REQUIRED

STATION TO STATION	L	H	CONC.	REIN. STEEL
5100 - 6450	R	6"	150'	9.6 cy 113 lbs
5100 - 7125	L	6"	225'	143 -- 169 "

(SEE SHEET 32)

ONE COURSE CEMENT CONCRETE SIDEWALK REQUIRED

STATION TO STATION	L	W	LENG.	AREA
6100 - 12100	R	5'	600'	333.3 sq yd
7125 - 12100	L	5'	472'	236.2 "
5100 - 6110	L	5'	107'	53.5 "

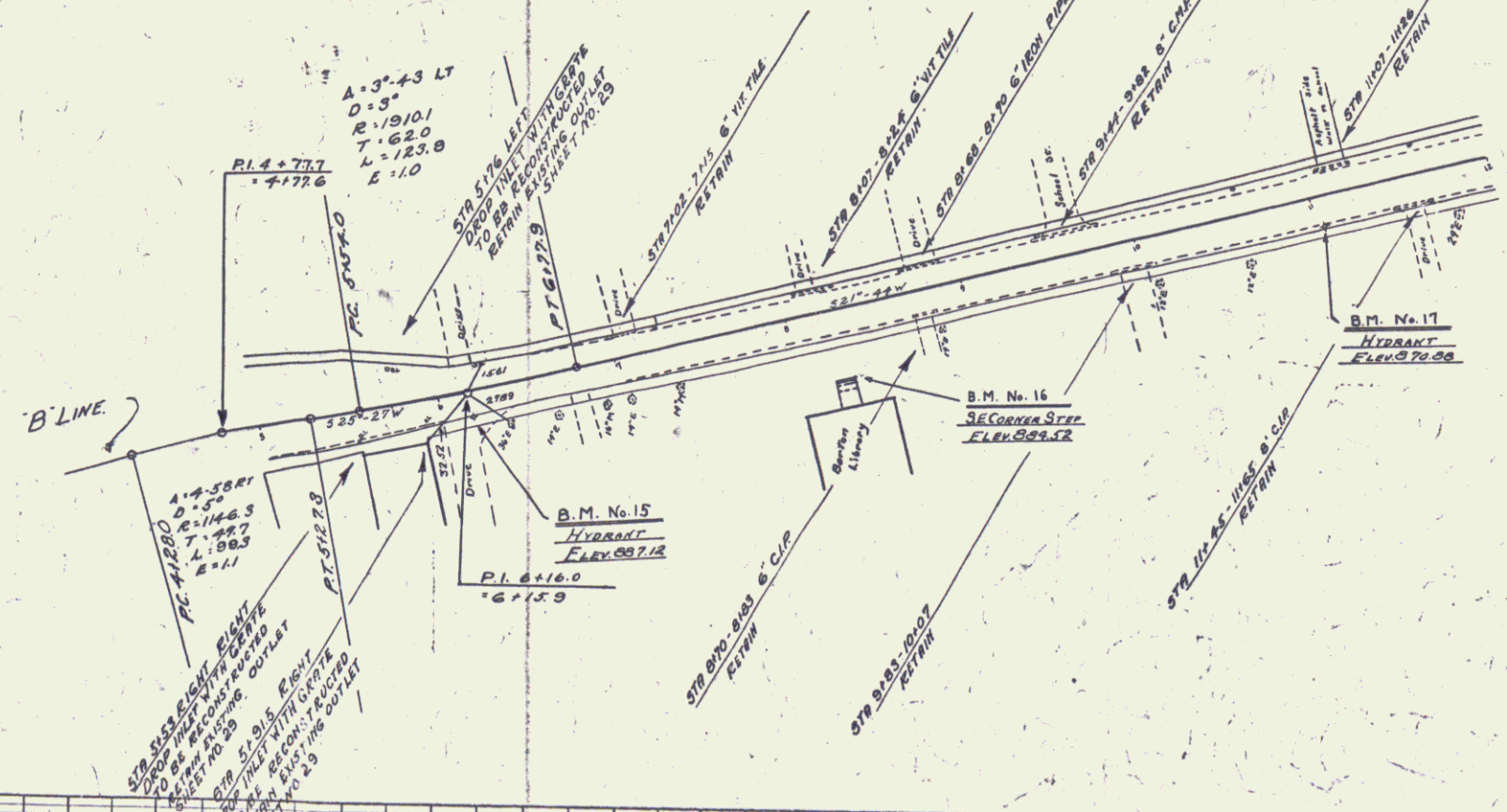
(SEE SHEET 32)

NEW DEEP INLETS WITH GRATE REQUIRED

STATION	L	CONC.	REIN. STEEL	GRATES
5153	R	1.4 cy	33	1
5176	L	1.4 cy	33	1
51915	R	1.4 cy	33	1

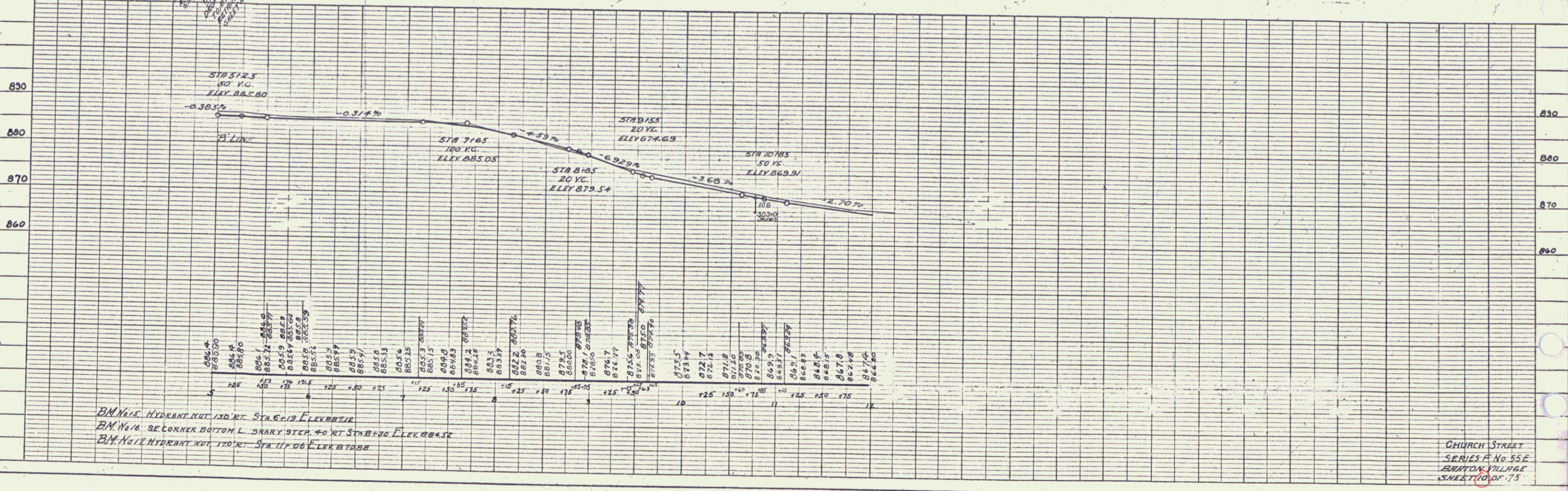
ED. ROAD STATE ROAD DIST. NO. 55 E 1931 10 75

PLAN
 DATE: 1/1/31
 DRAWN BY: D.M.
 CHECKED BY: [Signature]
 NOTE: BOOK IN CONTRACT



Town Route
 Project Site Pin
 Barton
 Vt 16
 FSS E
 01/01/1931

PROFILE
 DATE: 1/1/31
 DRAWN BY: [Signature]
 CHECKED BY: [Signature]
 NOTE: BOOK IN CONTRACT



BM No. 15 HYDRANT BUT 100' RT STA 6100 ELEV 885.12
 BM No. 16 3E CORNER BOTTOM L. DRARY ST. 40' RT STA 6100 ELEV 885.12
 BM No. 17 HYDRANT BUT 100' RT STA 11700 ELEV 870.00

CHURCH STREET
 SERIES F No. 55 E
 BRATTON VILLAGE
 SHEET 10 OF 13