

WOOD GUARD RAIL REQUIRED

COV. STA.	RIGHT	LEFT
5-31		24'
6-97		24'
13-43		24'

NEW REIN. CONC. PIPE CULVERTS REQUIRED

STATION	PIPE SIZE	LENG.	SCALE	CONCR.	REIN. STEEL
5-31	12"	40'	1.5 cy	0.9 cy	174 lbs.
13-43	15"	44'	1.5 cy	1.2 cy	174 lbs.

NEW CONCRETE BOX CULVERT REQUIRED

STATION	SIZE	LENG.	CONCR.	REIN. STEEL
8-45	3x3	41'	18.6 cy	12-41 lbs.

NEW STANDARD UNDERDRAIN WITH 4" PER CORR. GALV. METAL PIPE

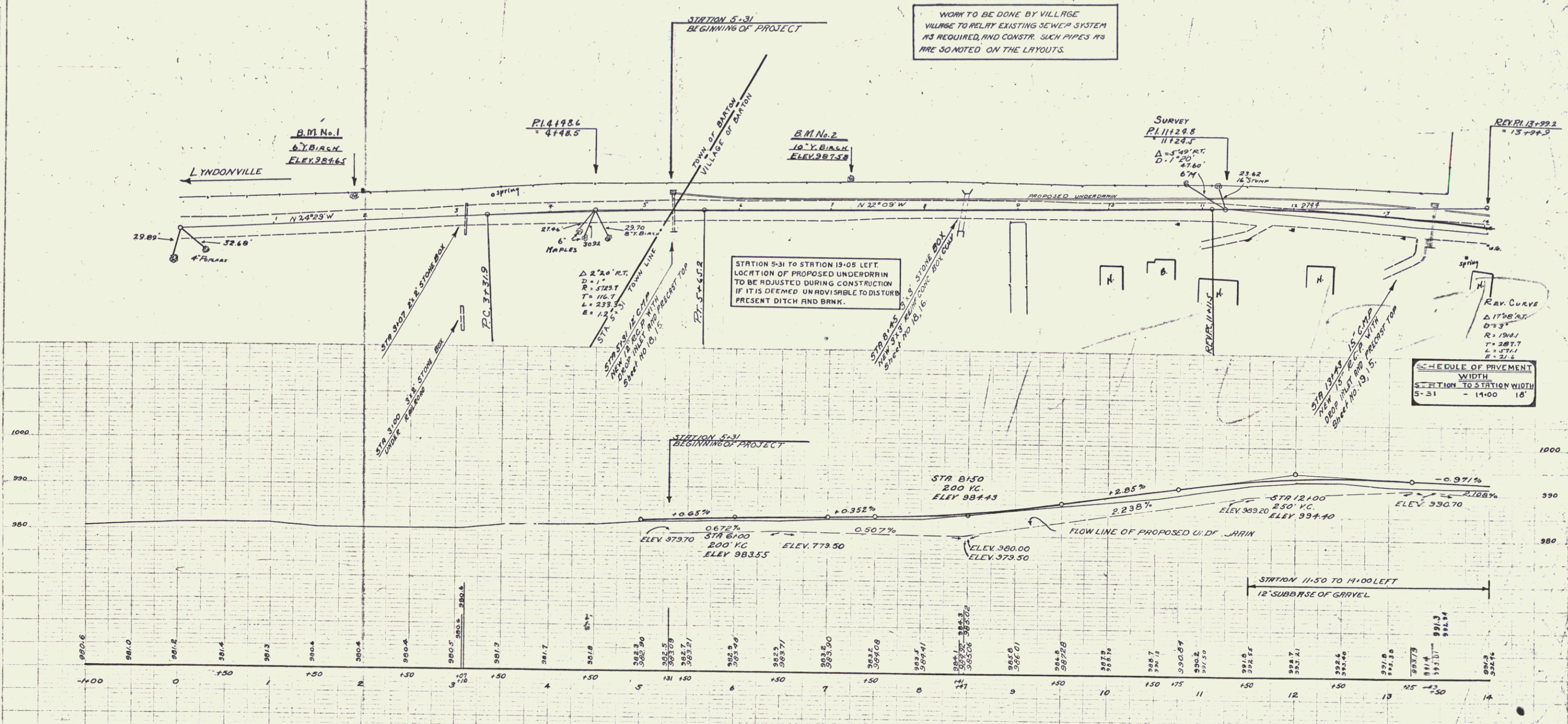
STATION	TO STATION	LEFT	RIGHT
5-31	14-00		869'

55 E 1931 4 75

CABLE GUARD RAIL REQUIRED

STATION	TO STATION	LEFT	RIGHT
5-02	11-50		678
11-75	13-27		132
13-40	14-00		60

NEW CATCH BASINS AND DROP INLETS ARE TO BE RELOCATED IF FOUND NECESSARY DURING CONSTRUCTION IN ORDER TO MAKE THEM FIT THE NEW GUTTERS.



WORK TO BE DONE BY VILLAGE
VILLAGE TO RELAY EXISTING SEWER SYSTEM
AS REQUIRED, AND CONSTR. SUCH PIPES AS
ARE SO NOTED ON THE LAYOUTS.

STATION 5-31 TO STATION 13-05 LEFT.
LOCATION OF PROPOSED UNDERDRAIN
TO BE ADJUSTED DURING CONSTRUCTION
IF IT IS DEEMED UNDESIRABLE TO DISTURB
PRESENT DITCH AND BANK.

SCHEDULE OF PAVEMENT

STATION	TO STATION	WIDTH
5-31	14-00	18'

B.M. No. 1 SPIKE IN ROOT 6" YELLOW BIRCH 23.0' LT. STA. 1+90 ELEV. 984.65
B.M. No. 2 SPIKE IN ROOT 10" YELLOW BIRCH 32.0' LT. STA. 7+23 ELEV. 987.58

SERIES F No. 55
BARTON VILLAGE
SHEET 4 OF 75

2