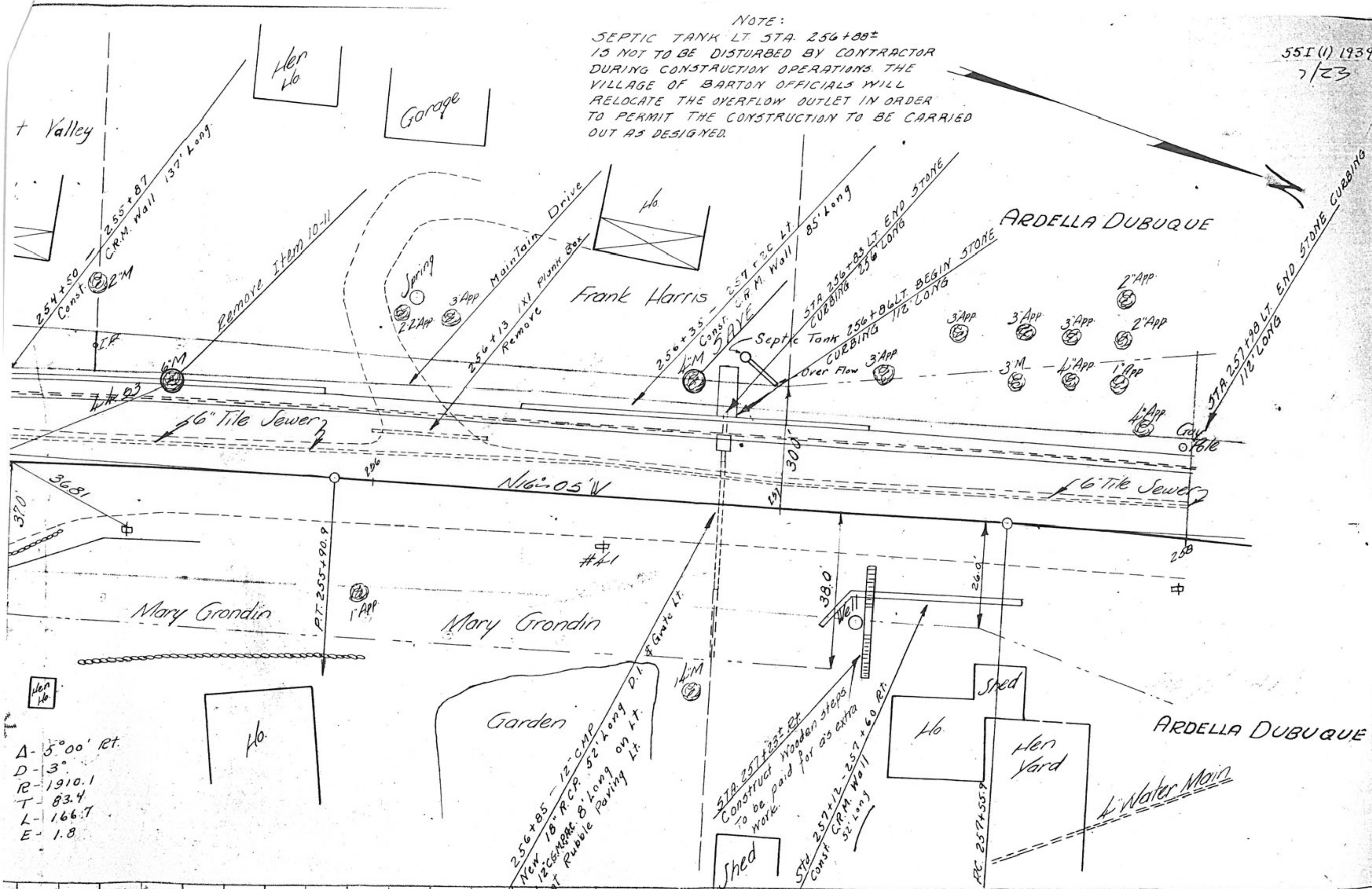


NOTE:
SEPTIC TANK LT STA. 256+88±
IS NOT TO BE DISTURBED BY CONTRACTOR
DURING CONSTRUCTION OPERATIONS. THE
VILLAGE OF BARTON OFFICIALS WILL
RELOCATE THE OVERFLOW OUTLET IN ORDER
TO PERMIT THE CONSTRUCTION TO BE CARRIED
OUT AS DESIGNED.



A- 5° 00' Rt.
D- 3°
R- 1910.1
T- 83.4
L- 166.7
E- 1.8

256+85 - 12" CMP
New 18" R.C.P. 52' Long on Lt.
12" CG-MERC. 8' Long on Lt.
at Rubble Paving Lt.

STA 257+23± Rt.
Construct Wooden Steps
to be paid for as extra
work.

STA 257+12 - 257+60 Rt.
Const G.R.M. Wall
32' Long

PC 257+55.9

Mary Grondin
RT. 255+90.9

Mary Grondin

ARDELLA DUBUQUE

Water Main