

PLAN  
 E. P. WELLS  
 10/21/21  
 10/21/21

PLAN  
 E. P. WELLS  
 10/21/21  
 10/21/21

**GUARD RAIL REQUIRED ON LEFT**

Sta 160-00 to 160-32	Length 24 ft.
- 161-29 - 161-53	- 24 -
- 163-64 - 163-88	- 24 -
- 166-31 - 166-75	- 24 -
- 170-88 - 171-12	- 24 -
- 175-32 - 175-56	- 24 -

**GUARD RAIL REQUIRED ON RIGHT**

Sta 160-00 to 160-32	Length 24 ft.
- 161-29 - 161-53	- 24 -
- 163-64 - 163-88	- 24 -
- 166-43 - 166-69	- 24 -
- 170-88 - 171-12	- 24 -
- 175-06 - 176-00	- 34 -

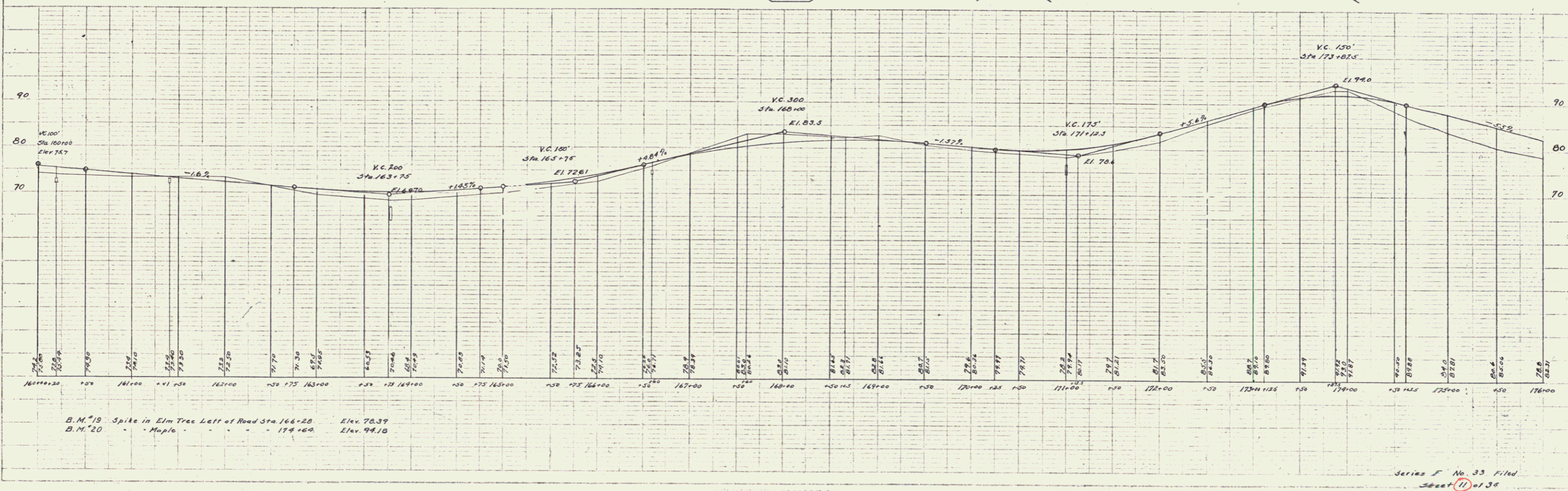
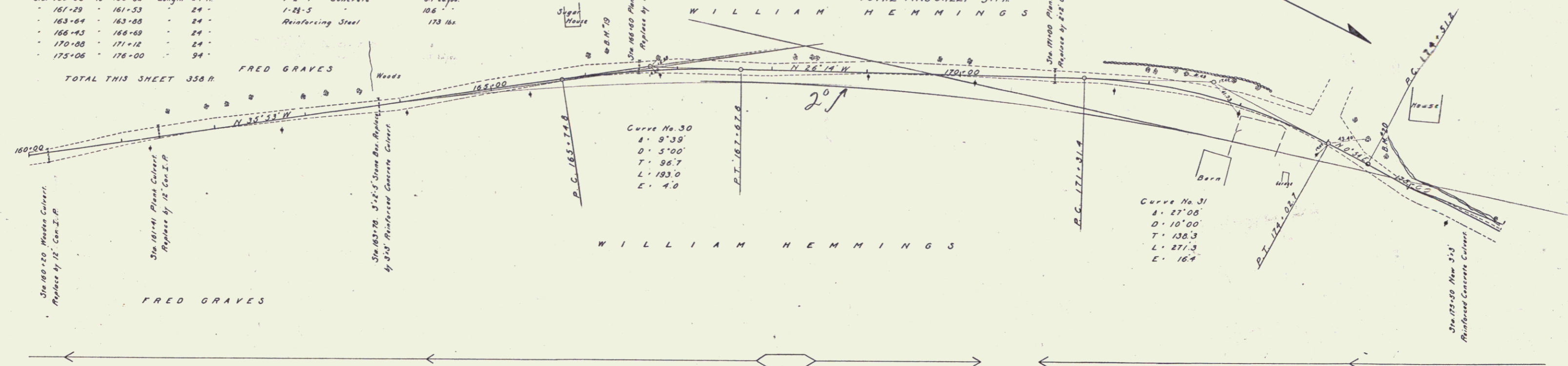
**NEW CULVERTS REQUIRED**

Sta 160-20	12" Con. I. P.	28 ft.
- 1-2 1/2	Concrete	10 cu yds.
Sta 161-41	12" Con. I. P.	28 ft.
- 1-2 1/2	Concrete	10 cu yds.
Sta 163-78	3'x3' Reinforced Concrete Culvert	57 cu yds.
- 1-2-4	Concrete	106 ft.
-	Reinforcing Steel	173 lbs.
Sta 166-60	12" Con. I. P.	32 ft.
- 1-2 1/2	Concrete	10 cu yds.
Sta 171-00	2'x2' Concrete Culvert	5.5 cu yds.
- 1-2-4	Concrete	24 ft.
- 1-2 1/2	Concrete	24 ft.

**STANDARD UNDERDRAIN REQUIRED**

Sta 160-00 to 160-20	Length 20 ft.	
Sta 175-50	3'x3' Reinforced Concrete Culvert	66 cu yds.
- 1-2-4	Concrete	110 ft.
- 1-2 1/2	Concrete	202 lbs.
-	Reinforcing Steel	202 lbs.
-	SUB. BASE REQUIRED	
Sta. 160+00 to Sta. 161+41	length 141 ft.	
- 164+00 to - 166+00	200 -	
- 168+00 to - 169+00	200 -	
TOTAL THIS SHEET 341 ft.		

NO. SHEETS	NO. SHEETS	NO. SHEETS	NO. SHEETS
9	4	33	11
35			



Series F No. 33 filed 3/22/21