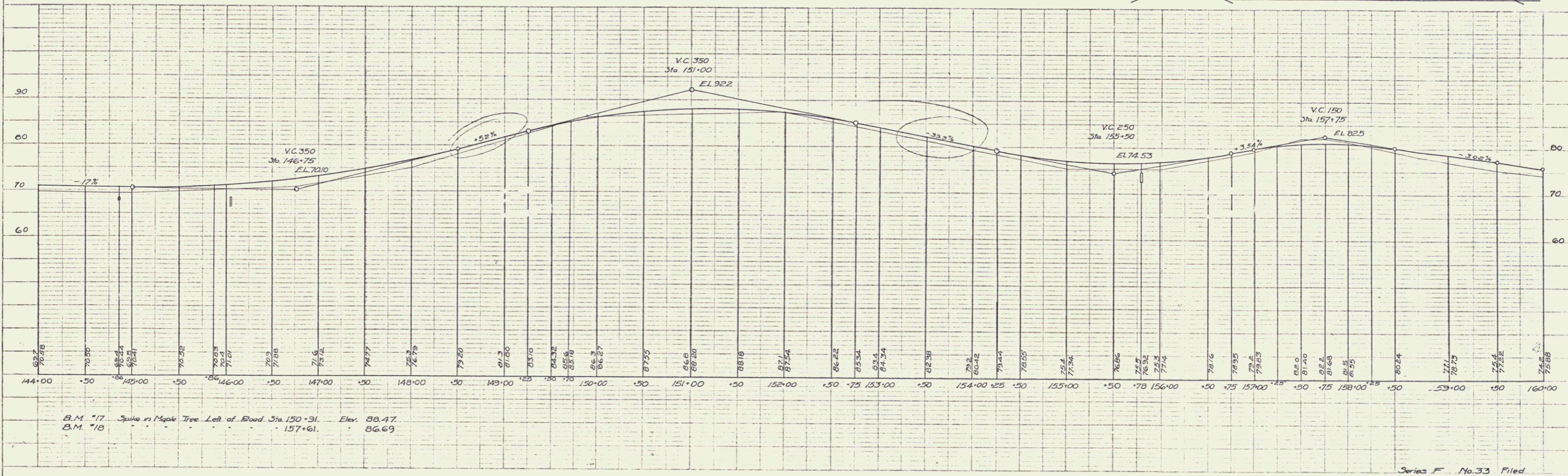
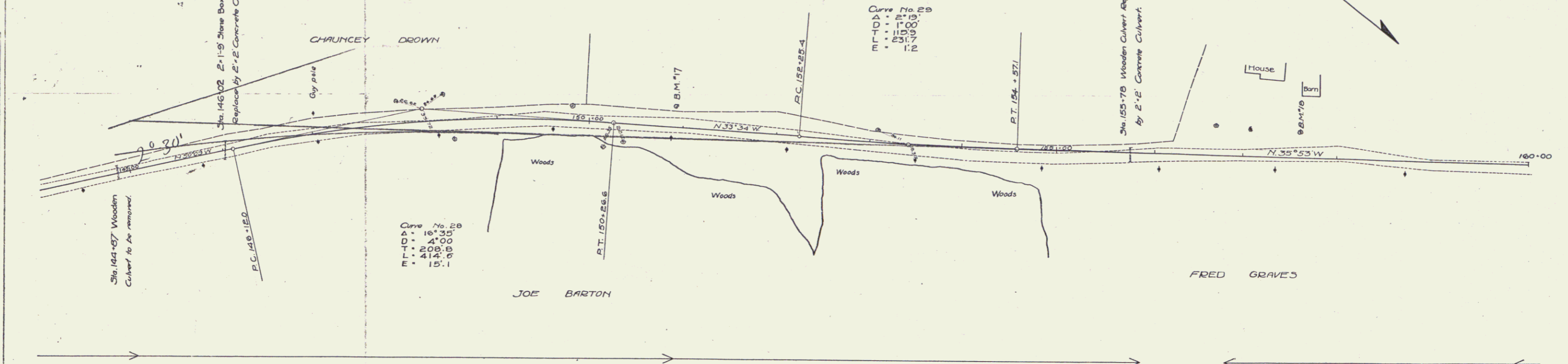


PLAN  
 DATE 1/22/22  
 DRAWN BY E. M. HAY  
 CHECKED BY E. M. HAY  
 TITLE ROAD IMPROVEMENT PROJECT

PLAN  
 DATE 1/22/22  
 DRAWN BY E. M. HAY  
 CHECKED BY E. M. HAY  
 TITLE ROAD IMPROVEMENT PROJECT

GUARD RAIL REQUIRED ON LEFT		NEW CULVERTS REQUIRED		SUB BASE REQUIRED	
Sta. 145+94 to 146+10	Length 24 ft	Sta. 146+02	2'-2" Concrete Culvert	Sta. 144+00 to 153+00	Length 900 ft
155+66 to 155+90	24'	1-2-4	Concrete	158+00 to 160+00	200'
		1-2-5	7.3	TOTAL THIS SHEET 1100 ft	
ON RIGHT				STANDARD UNDERDRAIN REQUIRED	
Sta. 145+67 to 146+11	Length 24 ft	Sta. 155+78	2'-2" Concrete Culvert	Sta. 157+75 to 160+00	Length 225 ft
155+66 to 155+90	24'	1-2-4	Concrete		
		1-2-5	7.3		
TOTAL THIS SHEET 96 ft					

FED. ROAD DIST. NO.	STA. NO.	FED. AID PROJ. NO.	FISCAL YEAR	TOTAL SHEETS
9	1-2	33	1921	10



Series F No. 33 Filed  
 Sheet 10 of 35