

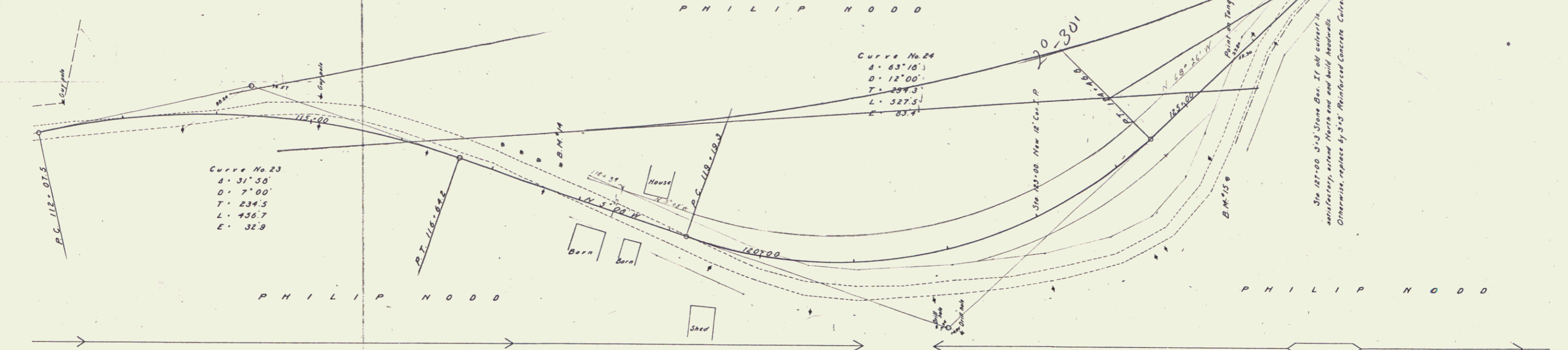
GUARD RAIL REQUIRED
ON LEFT
 Sta 122+94 to 123+10 Length 24 ft
 126+72 127+12 40
ON RIGHT
 Sta 115+10 to 116+46 Length 136 ft
 122+03 123+07 24
 126+36 127+12 36
TOTAL THIS SHEET 280 ft

NEW CULVERTS REQUIRED
 Sta 123+00 12' Cor. I.P. 34 ft
 1-2 1/2 - 5 Concrete 10 cu yds.
 Sta 127+00 3-3 Reinforced Concrete Culvert
 1-2 - 4 Concrete 70 cu yds.
 1-2 1/2 - 5 Reinforcing Steel 214 lbs.

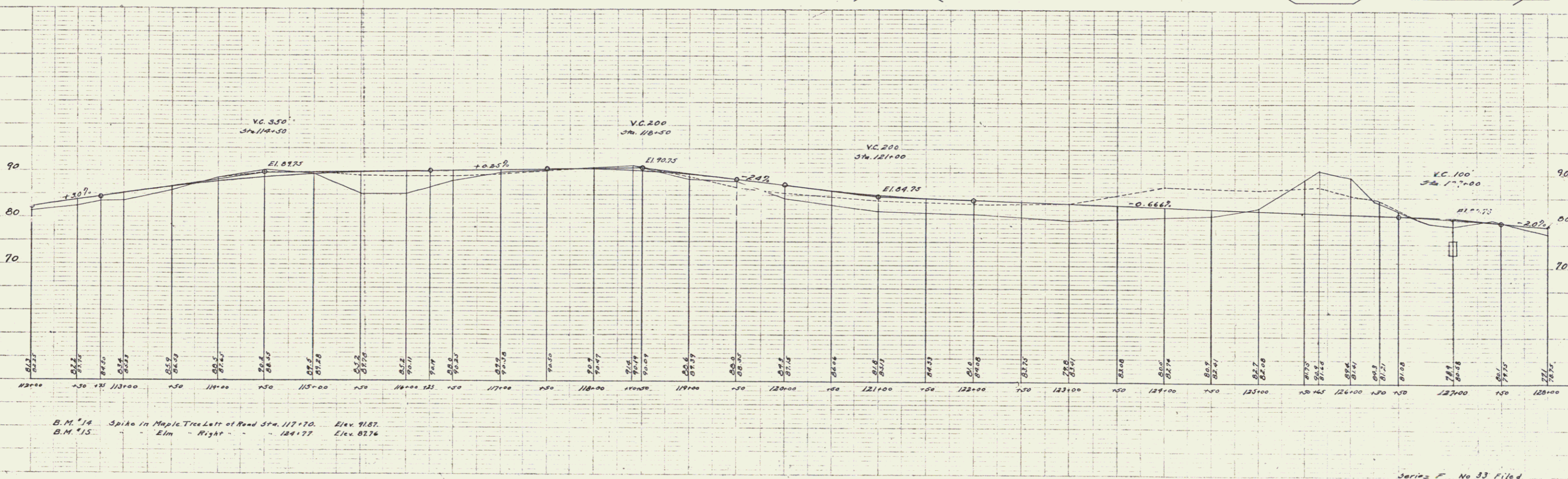
SUB. BASE REQUIRED
 Sta 112+00 to 115+00 Length 300 ft
 116+30 120+00 350
 127+00 128+00 100
TOTAL THIS SHEET 750 ft

FED. ROAD DIST. NO.	STATE	SECTION	YEAR	MARKET	TOTAL LENGTH
9	Vt	33	1921	B	38

PLAN
 DATE 1/14/12
 BY E. P. WELCH
 CHECKED E. P. WELCH
 TITLE ROADWAY IMPROVEMENTS
 PROJECT NO. 33-1921-B
 SHEET NO. 8



ELEVATION
 DATE 1/14/12
 BY E. P. WELCH
 CHECKED E. P. WELCH
 TITLE ROADWAY IMPROVEMENTS
 PROJECT NO. 33-1921-B
 SHEET NO. 8



B.M. 14 Spike in Maple Tree Left of Road Sta. 117+70. Elev. 91.87.
 B.M. 15 Elm " Right " " 124+77 Elev. 87.76

Series No 33 Filed
 3007 (8) 138