

GUARD RAIL REQUIRED

ON LEFT

Sta. 96+00 to 96+74	Length 74 ft.	
96+06	97+10	24'
100+08	101+12	24'
104+67	104+91	24'
107+15	107+39	24'
110+98	111+22	24'

ON RIGHT

Sta. 96+59 to 96+83	Length 24 ft.	
96+95	97+17	24'
100+88	101+12	24'
104+67	104+91	24'
107+15	108+11	96'
110+02	111+22	120'

TOTAL THIS SHEET 306 ft.

NEW CULVERTS REQUIRED

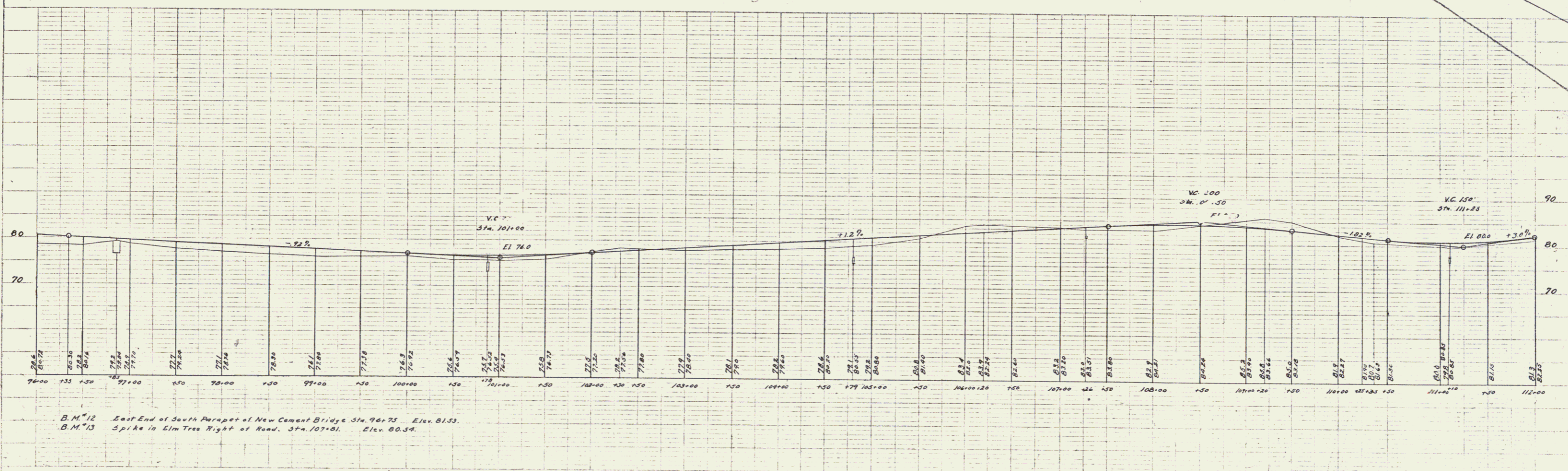
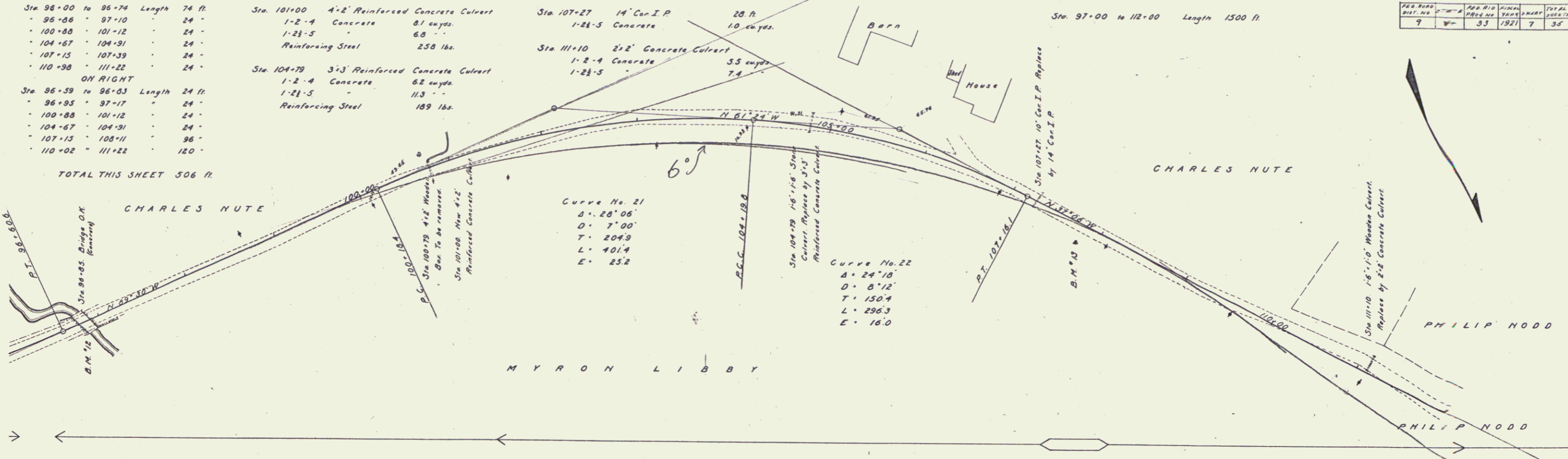
Sta. 101+00	4'-2" Reinforced Concrete Culvert
1-2-4	Concrete 81 cu yds.
1-2 1/2-5	Reinforcing Steel 258 lbs.
Sta. 104+79	3'-3" Reinforced Concrete Culvert
1-2-4	Concrete 62 cu yds.
1-2 1/2-5	Reinforcing Steel 189 lbs.

Sta. 107+27	14" Con.I.P.	28 ft.
1-2 1/2-5	Concrete	10 cu yds.
Sta. 111+10	2'-2" Concrete Culvert	35 cu yds.
1-2-4	Concrete	7.4
1-2 1/2-5	Reinforcing Steel	113

SUB BASE REQUIRED

Sta. 97+00 to 112+00 Length 1500 ft.

PER ROAD DIST. NO.	PER ROAD DIST. NO.	PER ROAD DIST. NO.	TOTAL SHEETS
7	33	1921	7 36



B.M. 72 East End of South Parapet of New Cement Bridge Sta. 96+75 Elev. 81.53.
 B.M. 73 Spike in Elm Tree Right of Road. Sta. 107+81. Elev. 80.54.

Series F No. 33 F.114
 Sheet 7 of 35