

GUARD RAIL REQUIRED

ON LEFT

Sta	To	Length	ft.
80+00	81+25	126	
82+35	83+19	24	
85+33	85+57	24	
85+70	85+94	24	
91+78	93+30	152	
95+30	96+00	70	

ON RIGHT

Sta	To	Length	ft.
82+09	83+13	24	
83+33	85+57	24	
85+70	85+94	24	
91+84	92+08	24	

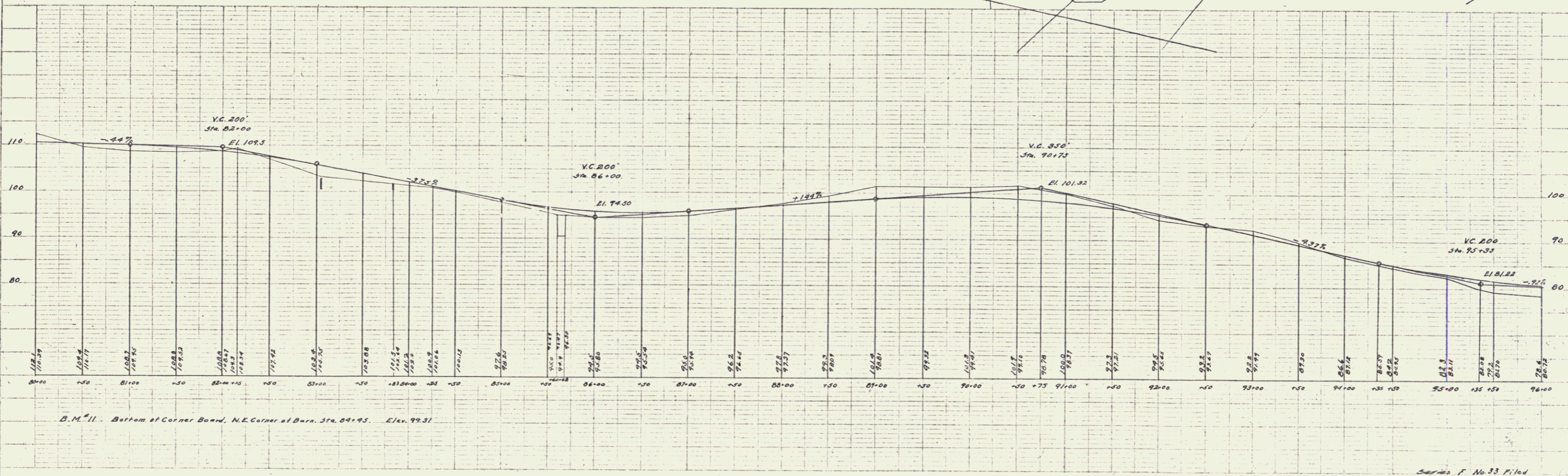
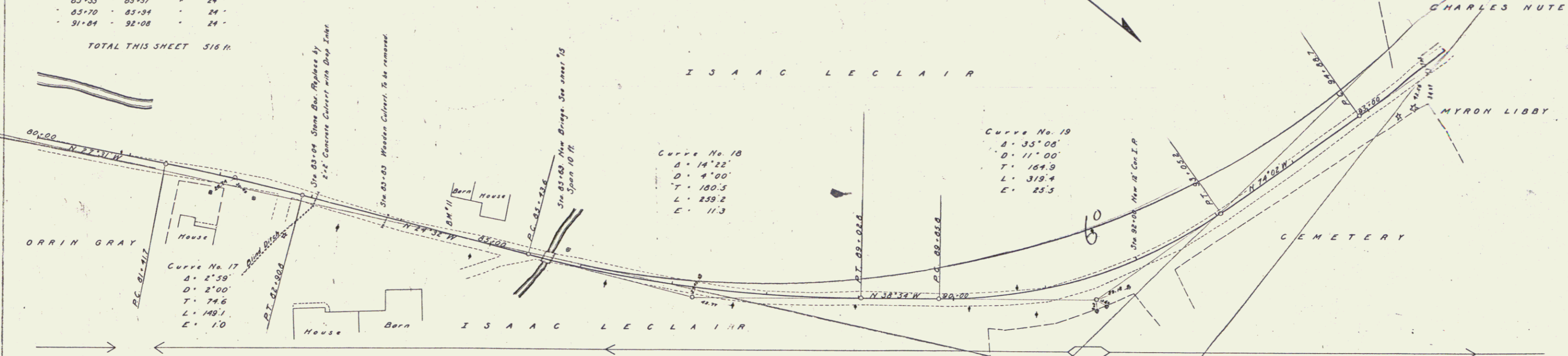
TOTAL THIS SHEET 516 ft.

NEW CULVERTS REQUIRED

Sta	Description	Length	ft.
83+04	2'-2" Concrete Culvert with Drop Inlet	39	
83+04	1'-2" Concrete	73	
92+00	12" Cor I.P.	36	
92+00	1'-2" Concrete	10	

PRO. DIST. NO.	PRELIM. YEAR	FINAL YEAR	TOTAL SHEETS
9	33	1921	6

Curve No. 20
 Δ = 15° 28'
 D = 9' 00"
 T = 86.3
 L = 171.9
 E = 5.8



B.M. 11 - Bottom of Corner Board, N.E. Corner of Barn, Sta. 84+95. Elev. 99.31

Series F No. 33 Filed Sept 21 1914